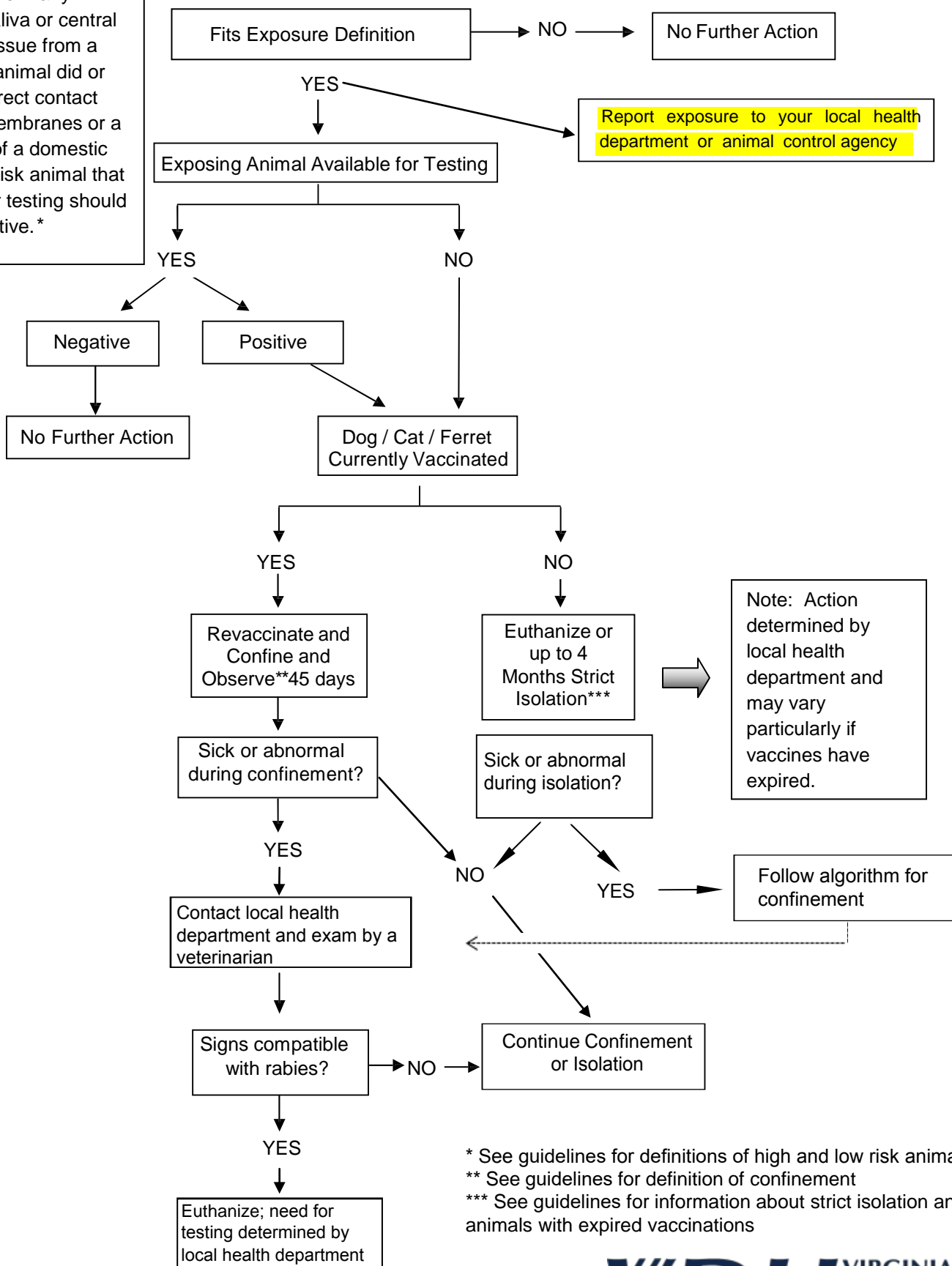


Virginia Guidelines for Rabies Prevention and Control

<https://www.vdh.virginia.gov/animal-contact-human-health/rabies-control/virginia-guidelines-for-rabies-prevention-and-control/>

DOG/CAT/FERRET RABIES EXPOSURE DECISION TREE

Exposure Definition: any situation where saliva or central nervous system tissue from a rabid or high risk animal did or could have had direct contact with the mucus membranes or a break in the skin of a domestic animal. Any high risk animal that is not available for testing should be presumed positive. *



* See guidelines for definitions of high and low risk animals
 ** See guidelines for definition of confinement
 *** See guidelines for information about strict isolation and animals with expired vaccinations