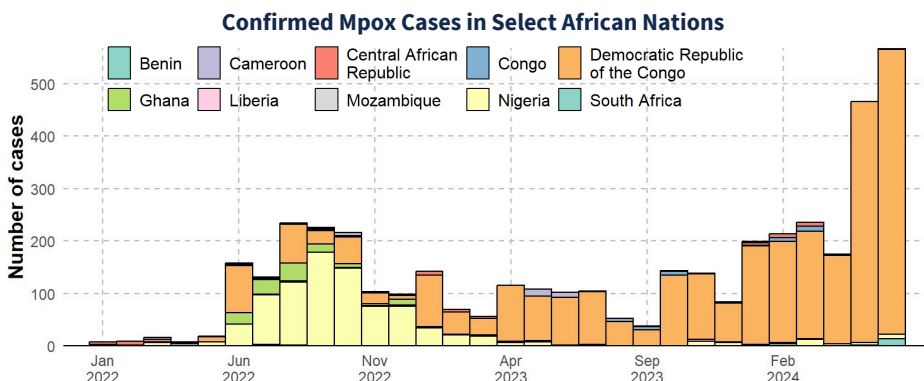


August 16, 2024

Key Takeaways

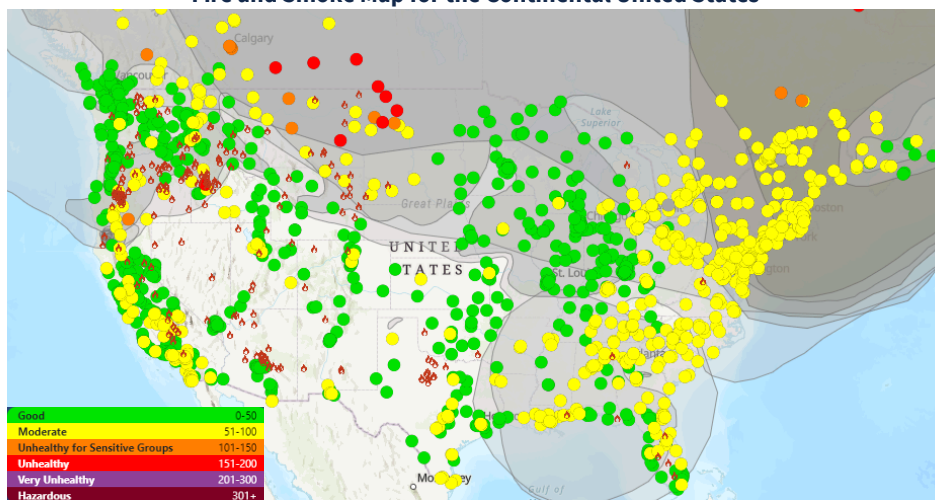
- The WHO declared a Public Health Emergency of International Concern due to the mpox outbreak in central Africa. The outbreak involves both a clade Ia strain, as well as a novel clade Ib strain.
- Sweden has reported the first case of clade Ib mpox outside of Africa.
- The CDC rates the future pandemic potential of HPAI A(H5N1) as a ‘moderate’ risk. It notes that the current threat level remains ‘low’.
- The FDA and USDA tested 167 commercial dairy products and found no evidence of viable HPAI A(H5N1) virus in any of them.
- COVID-19 activity continues to increase. Wastewater data suggest that viral activity is now ‘very high’ in Virginia.
- The CDC issued an alert regarding an increase in reported human parvovirus B19 cases, following a similar increase in parts of Europe.

Key Figures



An outbreak in DR Congo is responsible for most of the new confirmed mpox cases in Africa reported since early 2023. Note that suspected cases are not shown here. Image source: [WHO](#).

Fire and Smoke Map for the Continental United States



Mpox

14,250 / 456

The number of mpox cases / deaths reported in the 15 African Union Member States from Jan 1 to Jul 28, 2024.

COVID-19

95%

The likelihood that COVID-19 activity is growing in Virginia, according to CDC models as of Aug 13.

Very High

The current COVID-19 wastewater viral activity level in Virginia as of Aug 13.

HPAI A(H5N1)

191

HPAI A(H5N1) detections in dairy cattle herds in the United States as of Aug 16.

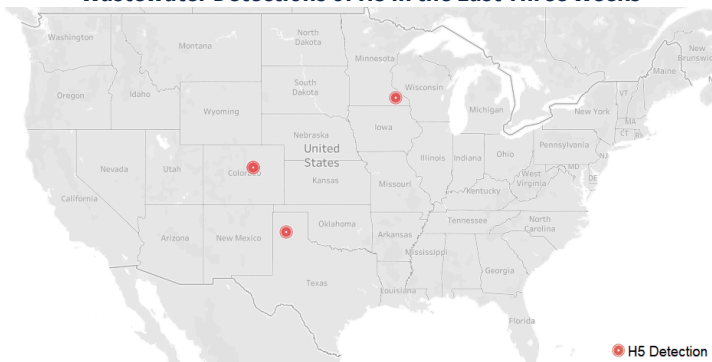
Spotlight:
Multi-Hazard Events

Ongoing Monitored Situations

Avian Influenza A(H5N1)

- **CDC rates pandemic potential of HPAI A(H5N1).** Using the new Influenza Risk Assessment [Tool](#), the agency found a ‘[moderate](#)’ risk of HPAI A(H5N1) causing a *future* pandemic. This is similar to earlier assessments of other avian influenza viruses. The *current* risk posed by HPAI A(H5N1) to the general public remains ‘low’.

Wastewater Detections of H5 in the Last Three Weeks



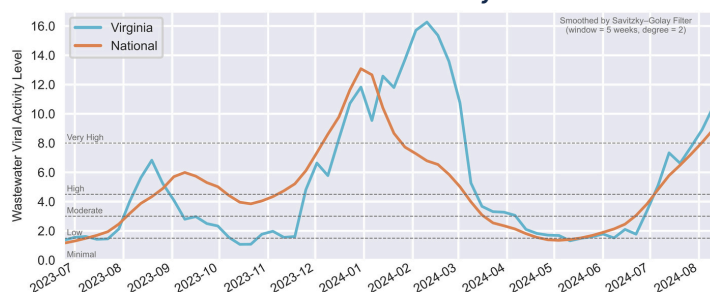
Between July 29 and August 15, H5 subtype viruses were detected at four national wastewater sampling sites, including two in Parker, Colorado. Data Source: [WastewaterSCAN](#).

- **FDA finds no evidence of infectious HPAI A(H5N1) in retail dairy products.** The agency [examined](#) 167 products from 27 states, including milk, cheese, and ice cream. No viable HPAI A(H5N1) virus was detected, suggesting that pasteurization inactivates the virus.

Seasonal Respiratory Illness

- **COVID-19 activity is highly elevated in Virginia.** Emergency Department [diagnoses](#) of COVID-19 in the Commonwealth are up 9.4% this week, continuing a ten-week growth trend. CDC wastewater surveillance suggests viral activity is now ‘very high’ in [Virginia](#) and [nationally](#). [Models](#) suggest further short-term growth.

COVID-19 Wastewater Viral Activity Over Time



Wastewater levels in Virginia have grown since June. Data source: [CDC](#).

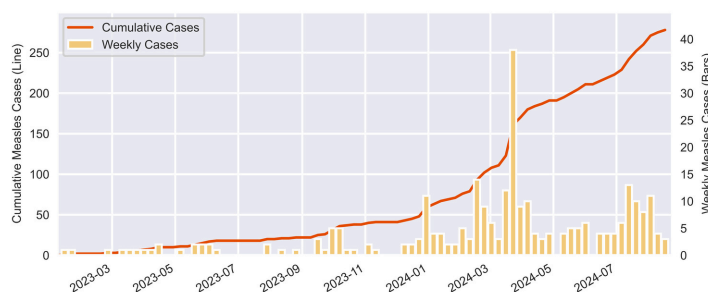
Mpox

- **Clade 1b mpox detected in Sweden.** The infection marks the first time the more virulent, novel form of the virus has been [detected](#) outside of Africa. The case is thought to be travel-related, as the patient recently [visited](#) an area in Africa affected by mpox.
- **WHO declares mpox a public health emergency of international concern.** Officials cite the rapid rise of cases in DRC and the [spread](#) to neighboring nations in the declaration. The Africa CDC has also [declared](#) the outbreak a public health [emergency](#) of continental security. They note that the virus [spreads](#) by close contact and is disproportionately affecting children.
- **DRC mpox outbreak continues as tensions mount in the region.** The WHO [notes](#) 14,250 mpox cases and 456 deaths in Africa from January 1 to July 28, 2024. The majority of both occurred in DR Congo. Some fear that renewed [tensions](#) in the region may result in mass displacements that exacerbate the outbreak.
- **CDC study of mpox in pets finds no live virus.** The [study](#) examined the homes of mpox patients and found evidence of mpox DNA in 12% of pet swabs and 25% of environmental swabs. However, it found no evidence of viable mpox virus in any of these swabs, suggesting that companion animals are not easily [infected](#).

Measles

- **Sporadic measles outbreaks continue nationally.** Minnesota is [investigating](#) a recent outbreak as the national case total for 2024 rises to [219](#). This figure includes 55 cases since the start of July. [Louisiana](#) also reports a new case this week, associated with an international traveler visiting New Orleans.

National Measles Cases Since the Start of 2023

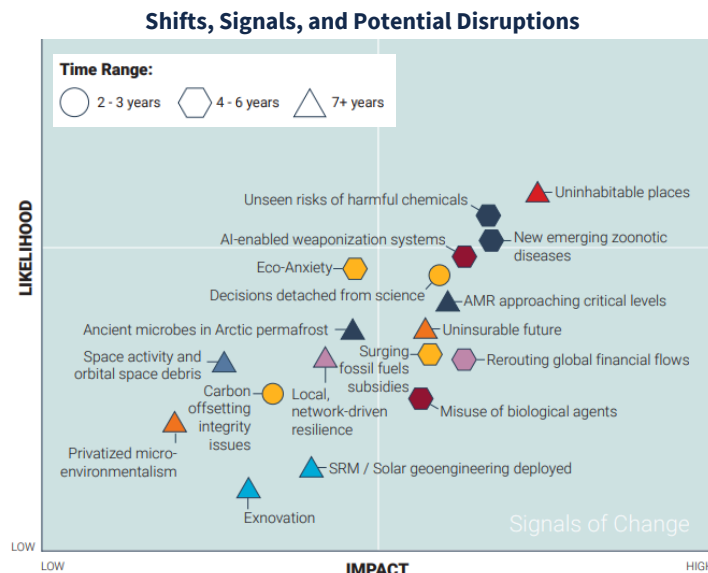


National measles cases grew consistently in July. Data source: [CDC](#).

Spotlight

- **The UN Environmental Program released a global foresight report on planetary health and human wellbeing.** The report listed 18 ‘signals of change’ driving global risk and resilience. It also noted the growing risk from ‘polycrisis’ where multiple major crises compound and cascade simultaneously.
- **Multi-hazard events account for 78% of damages, 83% of people affected, and 69% of deaths** from global disasters according to a new preprint study. Multi-hazard events have 50% or more spatial overlap and occur within a 90-day period. 61% of tracked events from 2000 - 2018 were part of multi-hazard events, almost twice as many as single hazard events.
- **The Cascade Institute examined Positive Pathways through Polycrisis in a new report.** It emphasized strengthening systems to improve resilience before a crisis, enhancing emergency response to mitigate impact, and taking advantage of opportunities to transform systems after a crisis occurs.

Multi-Hazard Events



The UNEP rated 18 ‘shifts, signals, and potential disruptions’ affecting global health and well-being on likelihood and impact. Three were considered to have high impact and high likelihood: 1) uninhabitable places, 2) unseen risks of harmful chemicals, and, 3) new emerging zoonotic diseases, the last two with a time horizon of 4-6 years. Image Source: [UNEP](#).

Other News

- **A fatal crash between a Norfolk Southern train and a passenger van in Augusta County left three dead and one severely injured on Monday night.** Virginia State Police continue to investigate the incident.
- **Virginia State University went on temporary lockdown following a shooting.** Four people were injured, and two suspects were arrested. None of the individuals involved were associated with VSU.
- **Tropical Storm Debby brought beneficial rain to most of Virginia and alleviated drought conditions in many parts of the state.** Tornadoes touched down in Loudoun and Caroline Counties, while heightened water levels in the Appomattox River resulted in minor flooding.
- **Malware attacks disguised as public Freedom of Information Act (FOIA) requests prompt warnings.** Several county attorneys in Virginia have reportedly been targeted, though no breaches have been reported as yet.
- **The CDC has issued a HAN Health Advisory due to increased human parvovirus B19 activity across the country,** with data showing a rise in infections, particularly among children aged 5-9. While most cases are mild, the virus can lead to severe complications among the immunocompromised.
- **Canada is facing a potential nationwide railway stoppage on August 22 due to deadlocked labor negotiations** between two major railway companies and labor unions. Supply chain disruptions are likely to be felt in the US but the impact is unclear.
- **Connecticut is experiencing a significant outbreak of whooping cough (pertussis), with 111 confirmed cases in 2024 compared to just 11 in 2023,** raising concerns as students prepare to return to school. Health officials attribute the surge to potential under-vaccination during the pandemic.