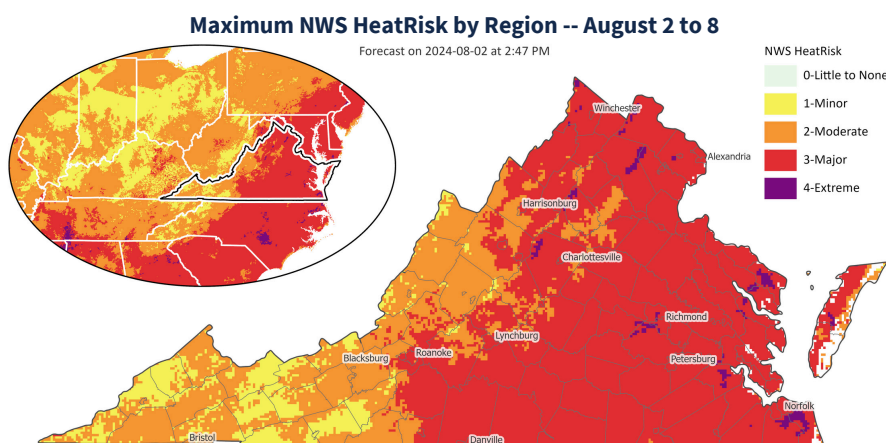


August 2, 2024

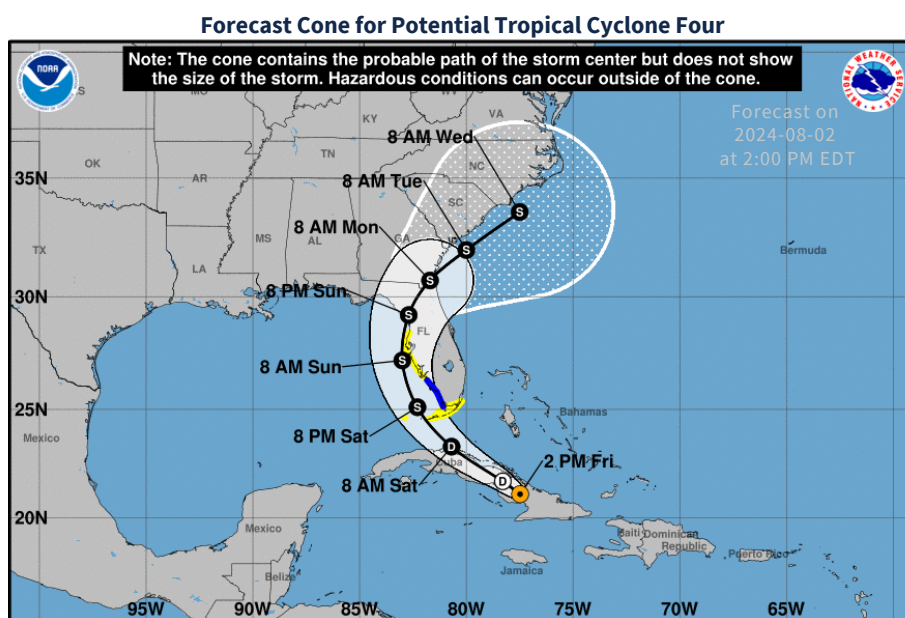
Key Takeaways

- HPAI A(H5N1) was detected in deer mice and house cats in Colorado.
- The CDC will fund seasonal flu vaccines and training for farm workers. The goal is to reduce the risk of HPAI A(H5N1) genetic reassortment.
- COVID-19 activity is elevated nationally and in Virginia.
- A study found COVID-19 infections in multiple species of Virginian wildlife.
- Oropouche virus is causing an unusual number of cases and spreading to new areas in South America and the Caribbean.
- Extreme heat is expected across Virginia today and into the weekend.
- Potential Tropical Storm Four could bring heavy rainfall to the Southeast.

Key Figures



Parts of Virginia will face 'major' or 'extreme' heat risk this weekend. Source: [NWS](#).



Tropical storm warnings have been issued for parts of Florida. Data Source: [NWS](#).

COVID-19

> 99.9%

The likelihood that COVID-19 is growing in Virginia, according to CDC models as of July 30.

High

The current COVID-19 wastewater viral activity level in Virginia as of Aug 1.

Measles

188

The number of new measles cases in the US detected since the start of 2024, as of July 26.

HPAI A(H5N1)

177

HPAI A(H5N1) detections in dairy cattle herds in the United States as of Aug 2.

Extreme Heat

112° F

The maximum heat index expected in Franklin City, VA this Friday afternoon.

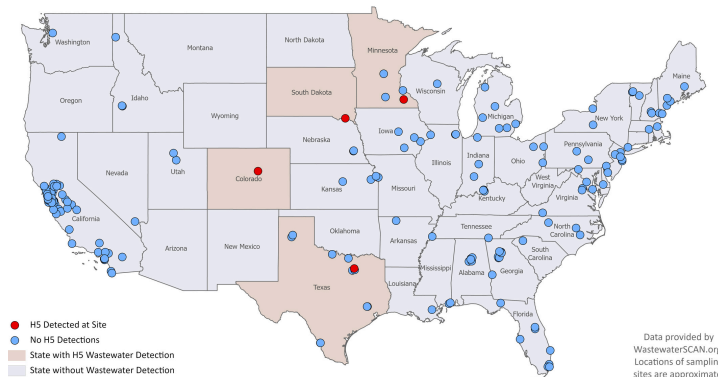
Spotlight:
Oropouche Virus

Ongoing Monitored Situations

Avian Influenza A(H5N1)

- **Multispecies outbreak of HPAI A(H5N1) continues.** This week the virus was detected in deer mice and cats in Colorado, as well as cattle herds in Colorado, Michigan, and Texas. Surveillance also detected the virus in the wastewater systems of four states.

Wastewater Detections of H5 in the Last Two Weeks



Between July 17 and July 31, H5 subtype viruses were detected at five of 194 national wastewater sampling sites. Data Source: [WastewaterSCAN](#).

- **CDC to offer seasonal flu shots and training to farm workers.** The aims of the program are to protect workers from seasonal flu viruses, reduce strain on rural health care systems, and reduce the likelihood of coinfection with a seasonal and novel flu virus. Coinfections could give rise to a novel pandemic flu strain via viral reassortment.
- **UK increases epidemic risk score for HPAI A(H5N1).** In a recent review considering the ongoing outbreak among American dairy cattle, the UK Health Security Agency increased the risk score from a three to a four on a six-point scale.
- **HPAI A(H5N1) threatens to disrupt state fairs.** Officials note that state agricultural fairs create risk for zoonotic spillover events due to multiple species from different farms housed together.

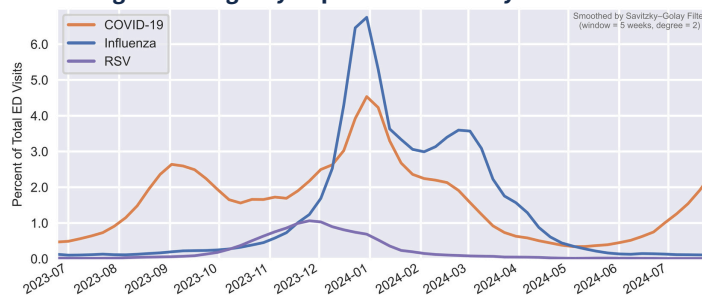
Mpox

- **Mpox surge continues in Africa.** Case rates have increased by 160% this year as the African CDC reports 14,250 cases and 456 deaths. The outbreak is spread across 10 nations, but most cases live in DR Congo. Officials note that 70% of the cases and 85% of deaths are among children under 15 years of age.

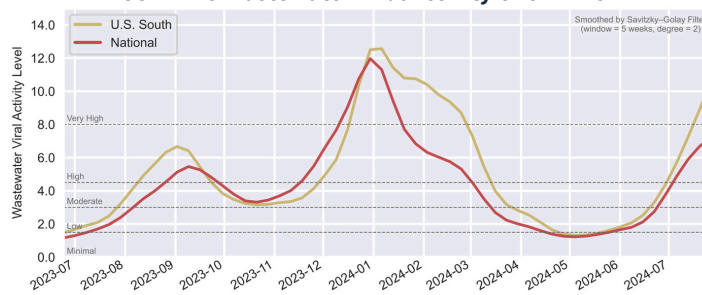
Seasonal Respiratory Illness

- **COVID-19 activity is elevated and still growing.** Emergency department (ED) diagnoses of COVID-19 have reached six-month highs in both Virginia and nationally. Epidemic models forecast further growth in the Commonwealth and across the United States.
- **Wastewater surveillance shows COVID-19 growth.** WastewaterSCAN data show ‘high’ concentrations of SARS-CoV-2 with an ‘upward’ trend in the American South. CDC wastewater surveillance also finds ‘high’ viral loads in Virginia rivaling levels seen in March.
- **Nature study finds COVID-19 in Virginian wildlife.** The study found evidence of the SARS-CoV-2 virus in six of 23 local species. Animals living near hiking trails were more likely to have been exposed to the virus, suggesting that hikers may be spreading the virus.

Virginia Emergency Department Visits by Viral Illness



COVID-19 Wastewater Viral Activity Over Time



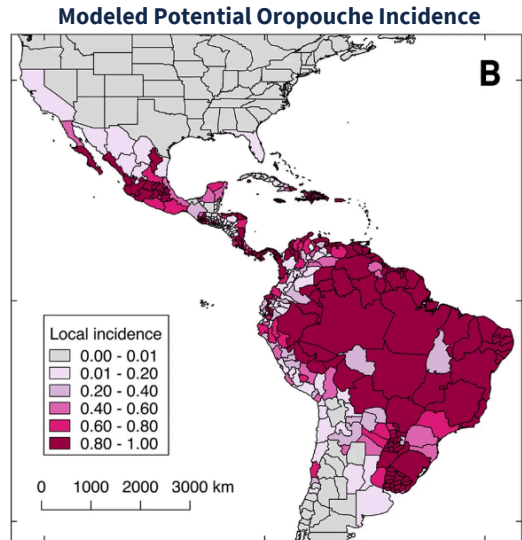
ED diagnoses continue to show sustained COVID-19 growth in Virginia (top). Wastewater surveillance also shows a large increase of COVID-19 nationally (bottom). Note, wastewater data for Virginia is unavailable this week. Data sources: Top: CDC [NSSP](#) | Bottom: CDC [NWSS](#).

Measles

- **Measles cases are highly elevated in 2024.** The 188 case total reported this year is three times higher than the total number of cases reported last year. This week saw new cases in Minnesota and Los Angeles.

Spotlight

Oropouche Virus



A 2023 model, developed prior to the current outbreak, suggests that Oropouche could reach California and Florida. Oropouche's primary vector, the midge *Culicoides paraensis*, has a range stretching from Argentina to the northern United States, and can be found in Virginia. Image source: [BMC](#).

- **Brazil has recorded 7,044 Oropouche infections** through July 7, compared to just 832 in all of 2023. 7,688 confirmed cases have been reported to PAHO from five countries through July 16. Oropouche is endemic to the Amazon region, but more than 20% of Brazil's cases have occurred outside of the endemic zone, including in large urban centers.
- **Brazil recorded the first ever known Oropouche deaths** this week, among two women aged 22 and 24 with no comorbidities. Symptoms are generally mild, but severe cases can cause hospitalization and lead to neuroinvasive disease. Oropouche has also been linked to stillbirths and birth defects.
- **Cuba reported Oropouche cases for the first time in May.** The virus has now been detected in 13 of 15 provinces, including in peri-urban areas and, according to PAHO, an "ecological context very different from that of the Amazon region." The primary vector of Oropouche, the midge *Culicoides paraensis*, has not been identified in Cuba, however some mosquito species can also transmit the virus.

Other News

- An EF-1 tornado with maximum winds close to 100 mph touched down in Halifax County last week. While the tornado was about 75 yards wide and remained on the ground for nine miles, significant damage was limited to uprooted trees.
- **Thirty-three facility employees were hospitalized for chemical exposure following an ammonia leak at a food processing plant in Sterling.** While the leak has since been contained, several of those hospitalized remain in serious condition, five of whom experienced significant symptoms.
- **Massachusetts expects to spend \$1 billion next year on emergency shelters, driven by the costs of housing migrants.** The White House issued new border restrictions in early June and border encounters have dropped to a three year low. However, some experts are concerned unrest in Venezuela could spark a new wave of migration.
- **Four major wildfires are raging through Colorado's Front Range.** This has prompted the evacuation of hundreds of residents and left one dead. Extreme heat and dry, windy conditions throughout the region are making it difficult to contain the fires.



Portions of the Florida coast are under either a tropical storm watch or warning over the weekend, as heavy rains and high winds are expected to move into the area. Image Source: [NOAA](#).

- **Virginia DEQ water quality testing results have been released following the massive Nutrien Ag warehouse fire in South Hill.** Pentachlorophenol, a pesticide, was present at levels exceeding the comparison value, but were detected in an area where recreation is unlikely.