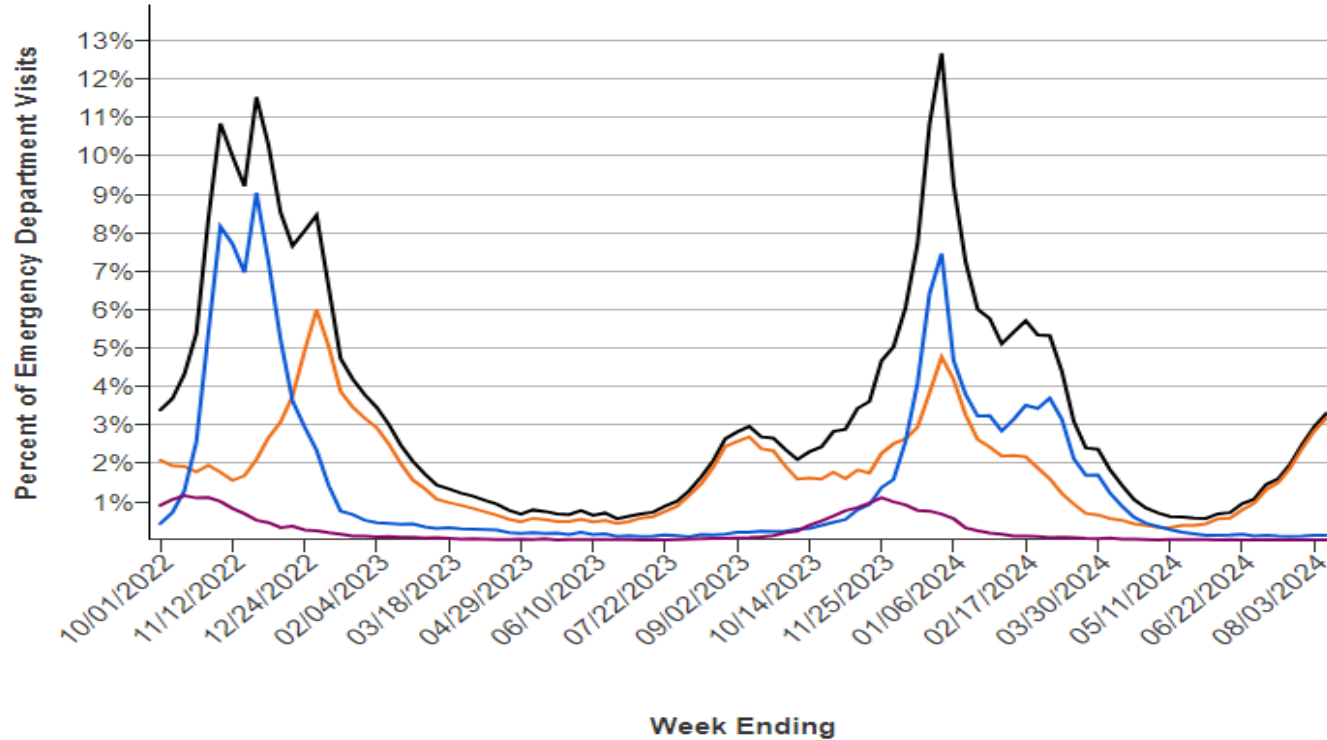


Flu/RSV/COVID/Mpox Updates

ED Visits for Viral Respiratory Illness, VA



Data through
Week Ending: 08/10/2024

Combined: 3.3%
COVID-19: 3.2%
Influenza: 0.1%
RSV: 0.0%

Select a virus to add or remove it from the graphic

- Combined
- COVID-19
- Influenza
- RSV

Data presented through: 08/10/2024; Data as of: 08/14/2024

COVID-19, VA

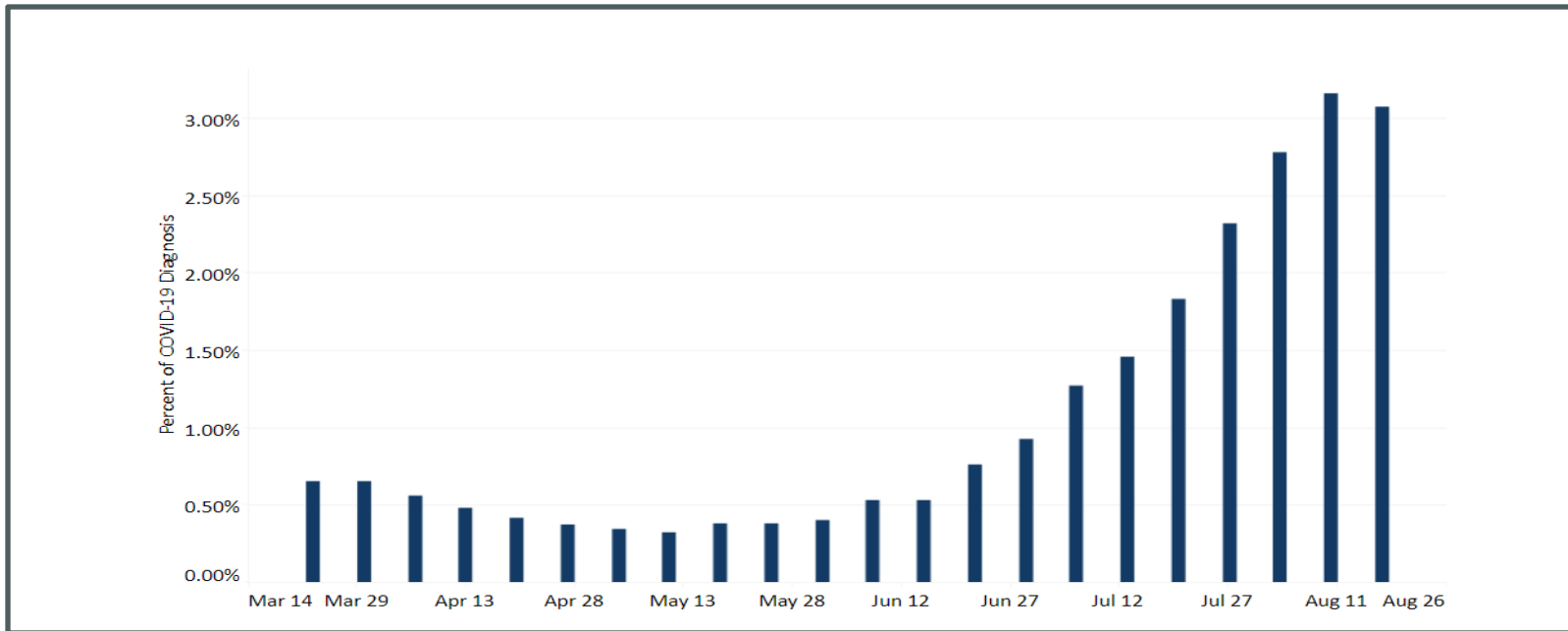
Week ending August 17, MMWR week 33:

- **3.07%** of ED visits were for diagnosed COVID-19 (**2.8% decrease** from previous week)
- Current SARS-CoV-2 Wastewater activity level - **'Very high'***

4 week trend in COVID-19 Diagnosis in ED Visits



Weekly Percent of Emergency Department Visits for Diagnosed COVID-19 in Virginia, past 6 months



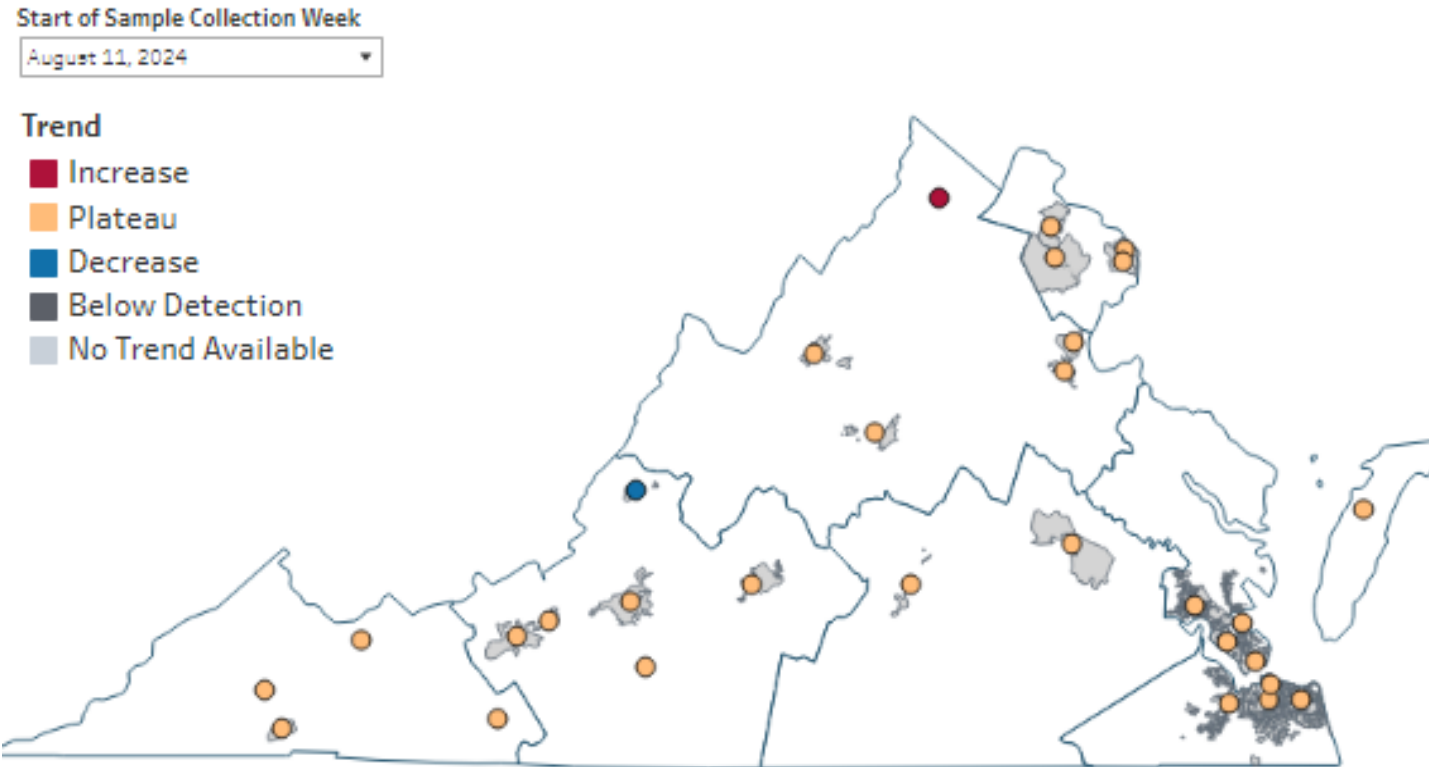
*Source: [COVID.WW.CDC.Dashboard](#), [CDC COVID Data Tracker](#), [VDH COVID-19 Dashboard](#)

VDH Weekly Respiratory Disease Surveillance Report. Percentage change is calculated off updated case numbers from week prior.

*CDC WW Data through 5/30:

COVID-19 Wastewater Surveillance –

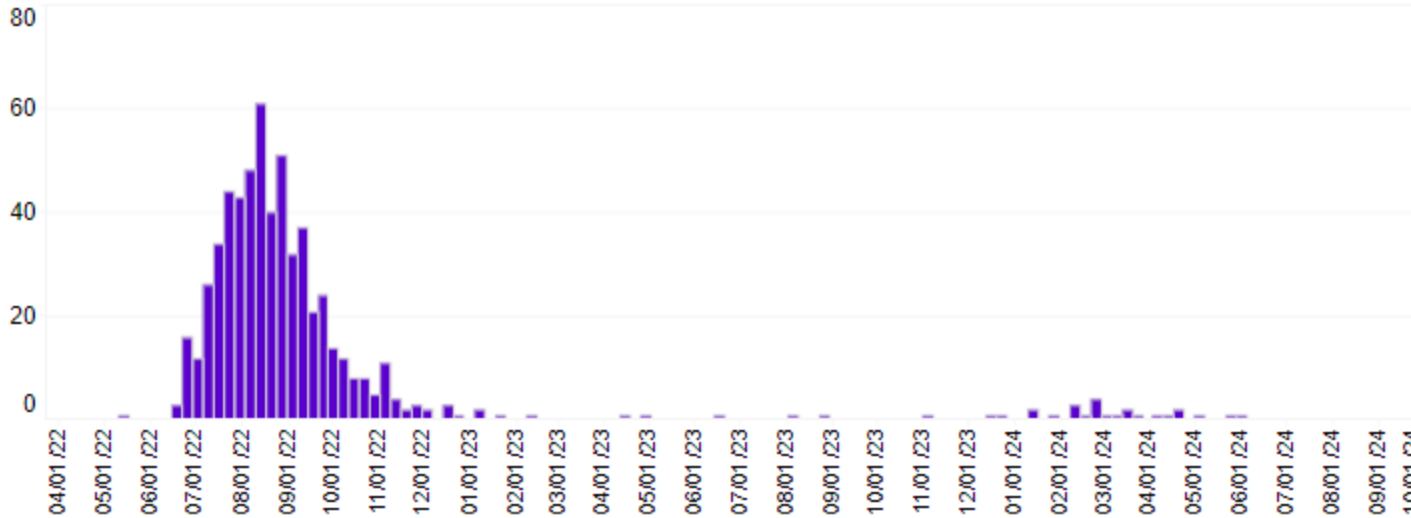
Week ending August 17, 2024:



- This map of Virginia shows the locations and overall viral load trends of the wastewater collection sites enrolled in the Sentinel Monitoring Program.
- The trend is indicated by the color of the 'dot'. See legend below. Not all sites produce data every week, so there may be gray 'No Trend Available' dots

Source: [VDH Wastewater Dashboard](#)

Mpox Cases in Virginia, Epi Curve (5/2022 – 8/2024)



<https://www.vdh.virginia.gov/monkeypox/data-in-virginia/>

Total Cases	601
Hospitalizations	35
Deaths	2

Mpox Cases By Age and Sex (as of 8/20/2024)

Age Group	Cases
0-9 Years	0 (0.0%)
10-14 Years	1 (0.2%)
15-19 Years	16 (2.7%)
20-29 Years	214 (35.6%)
30-39 Years	241 (40.1%)
40-49 Years	89 (14.8%)
50-59 Years	34 (5.7%)
60-69 Years	4 (0.7%)
70+ Years	2 (0.3%)
Sex	
Female	34 (5.7%)
Male	567 (94.3%)

*Data represent investigations with notifications submitted in VEDSS.