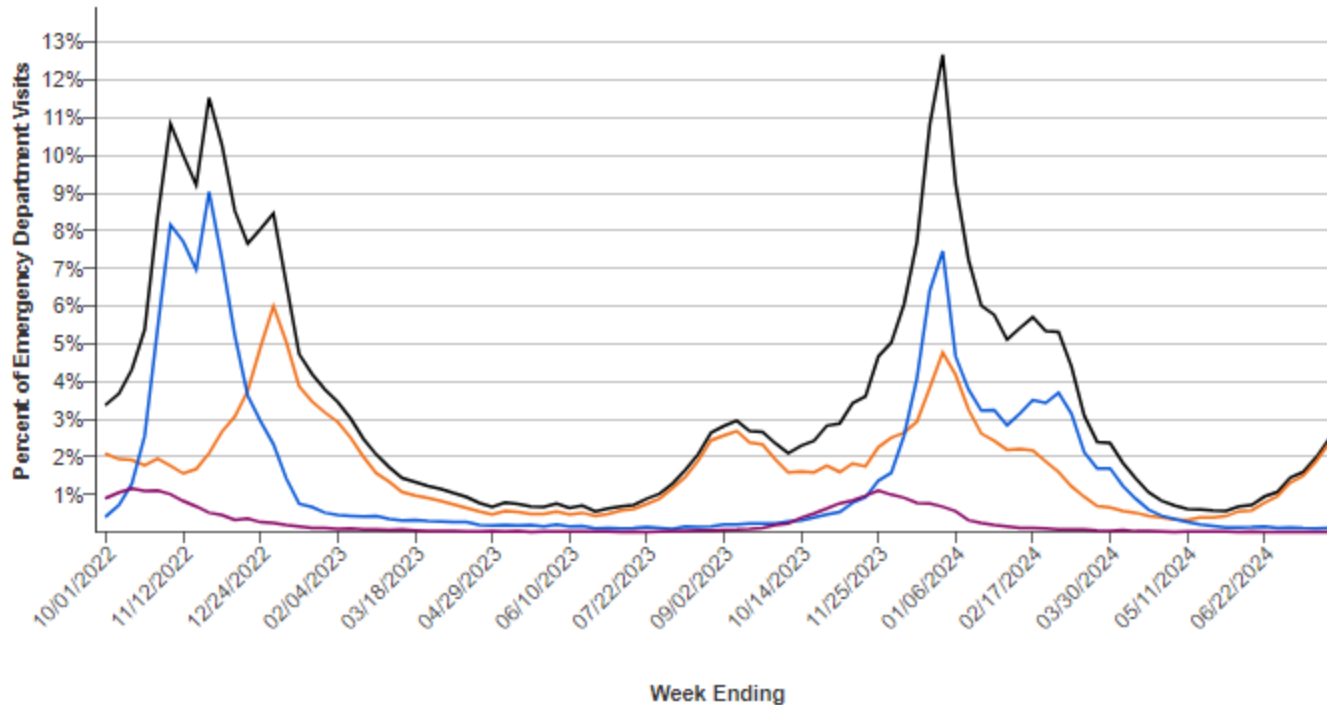


# Flu/RSV/COVID/Mpox Updates

# ED Visits for Viral Respiratory Illness, VA

Emergency Department Visits for Viral Respiratory Illness, Virginia



**Data through  
Week Ending: 07/27/2024**

**Combined: 2.5%**  
**COVID-19: 2.4%**  
**Influenza: 0.1%**  
**RSV: 0.0%**

● Combined ● COVID-19 ● Influenza ● RSV

Data presented through: 08/03/2024; Data as of: 08/07/2024

# COVID-19, VA

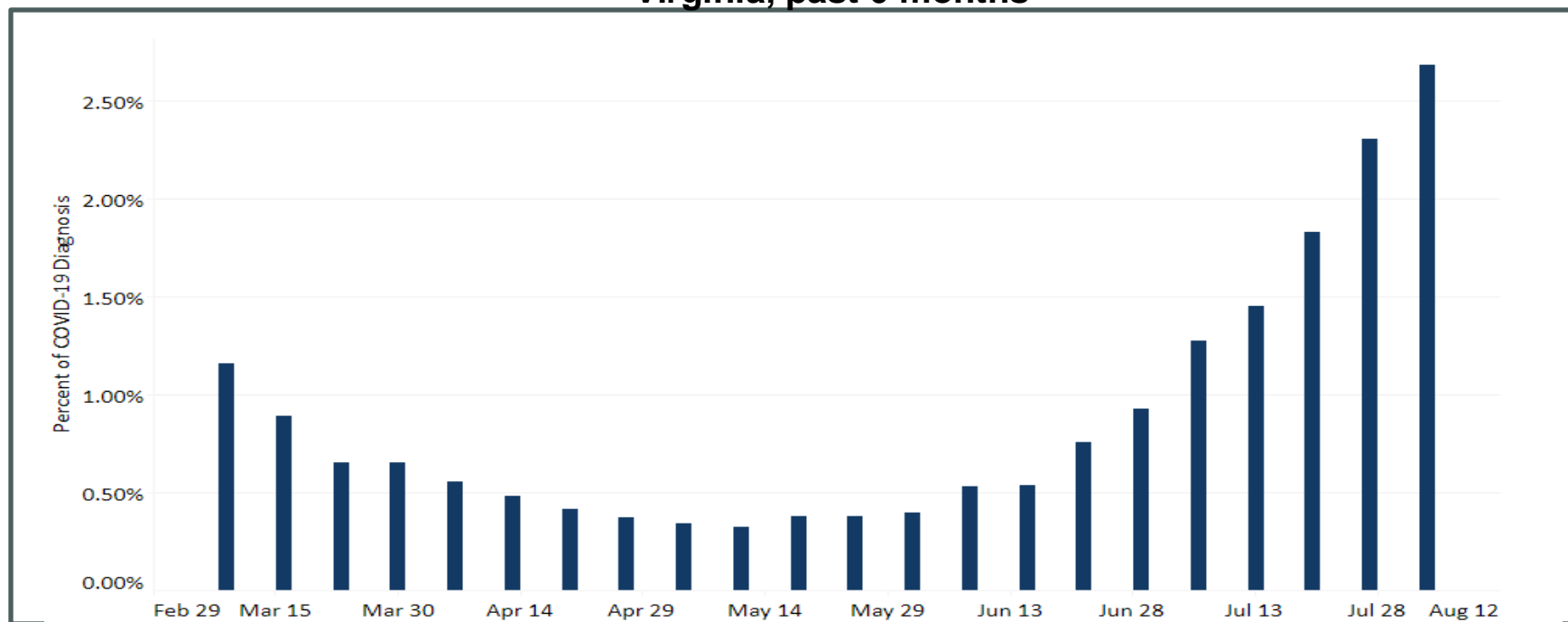
4 week trend in COVID-19 Diagnosis in ED Visits



**Week ending August 3, MMWR week 31:**

- **2.68%** of ED visits were for diagnosed COVID-19 (**16.5% increase** from previous week)
- Current SARS-CoV-2 Wastewater activity level - **'high'**\*

**Weekly Percent of Emergency Department Visits for Diagnosed COVID-19 in Virginia, past 6 months**



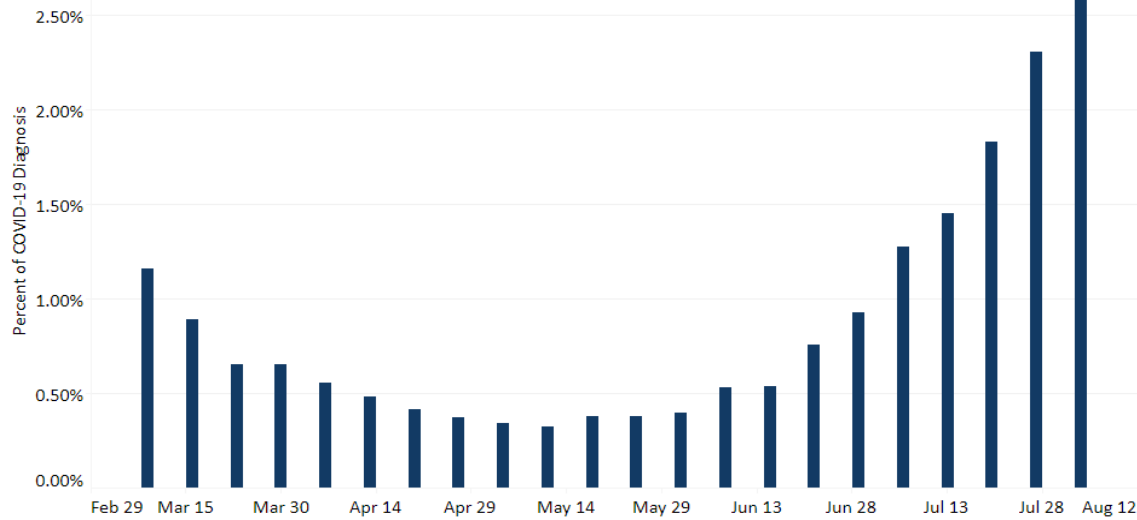
\*Source: [COVID.WW.CDC.Dashboard](#), [CDC COVID Data Tracker](#), [VDH COVID-19 Dashboard](#)

VDH Weekly Respiratory Disease Surveillance Report. Percentage change is calculated off updated case numbers from week prior.

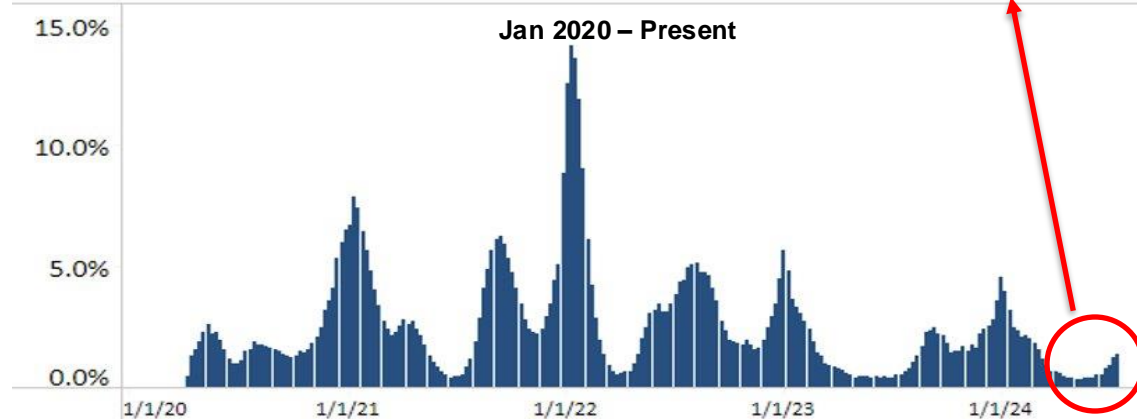
\*CDC WW Data through 5/30:

# COVID-19, VA

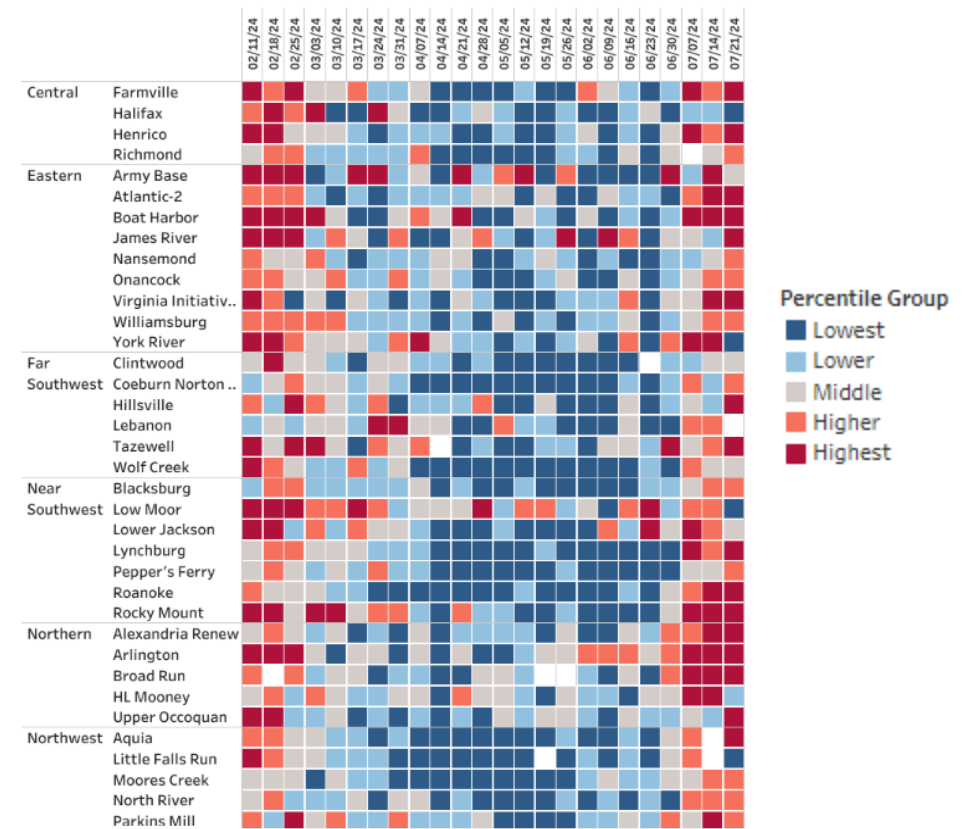
Weekly Percent of Emergency Department Visits for Diagnosed COVID-19 in Virginia, Feb 2024 – Present



Jan 2020 – Present



SARS-CoV-2 Wastewater Testing – Site-Specific Percentile Groups Feb 2024 – July 27, 2024



As of 7/30: <https://www.vdh.virginia.gov/coronavirus/sars-cov-2-in-wastewater/>  
As of 7/30: <https://www.vdh.virginia.gov/coronavirus/see-the-numbers/covid-19-in-virginia/>

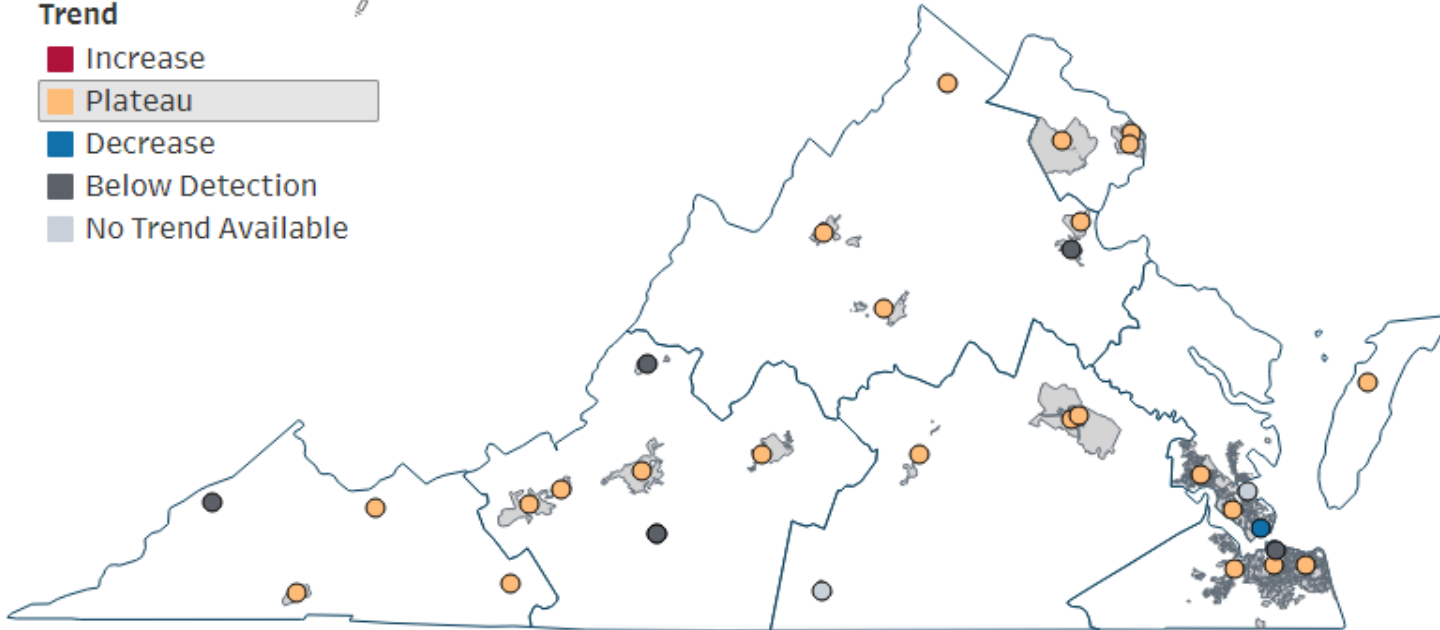
## COVID-19 Wastewater Surveillance –

Week ending July 27, 2024:

Start of Sample Collection Week ▾  
July 21, 2024 ▾

**Trend**

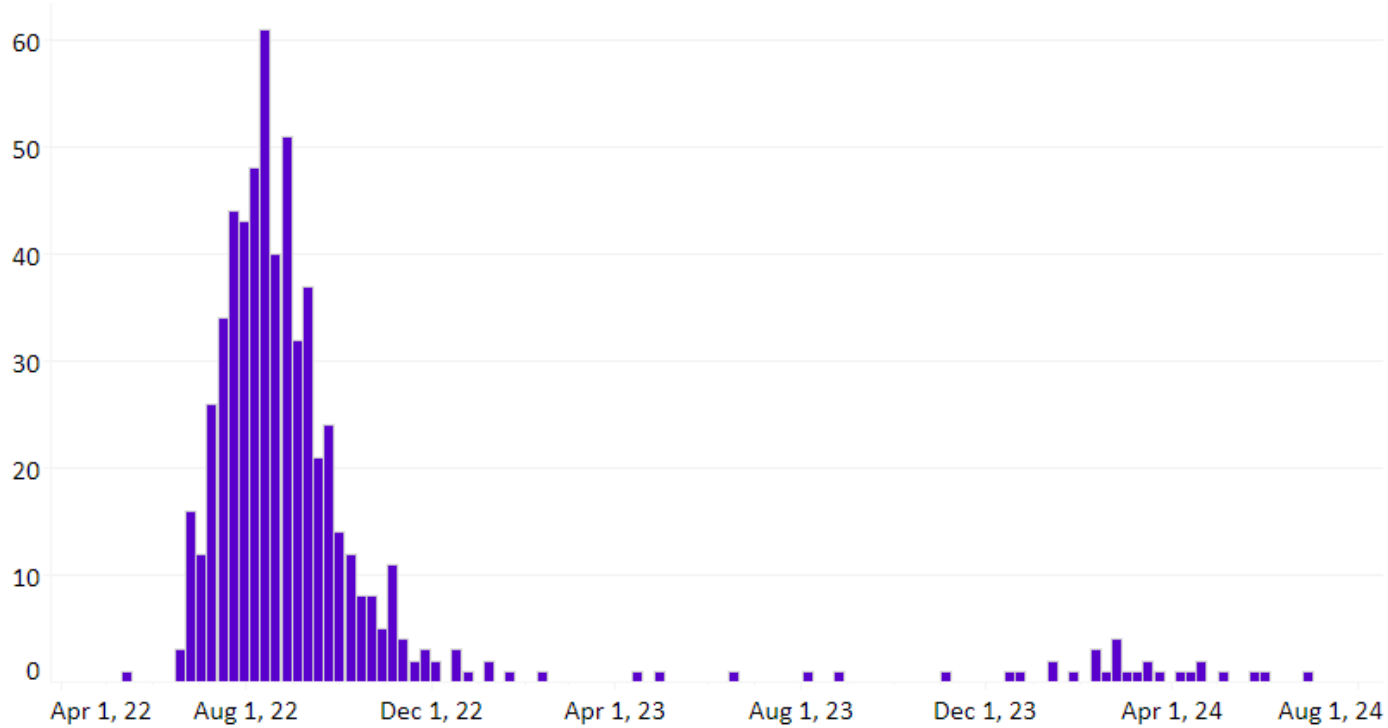
- Increase
- Plateau
- Decrease
- Below Detection
- No Trend Available



- This map of Virginia shows the locations and overall viral load trends of the wastewater collection sites enrolled in the Sentinel Monitoring Program.
- The trend is indicated by the color of the 'dot'. See legend below. Not all sites produce data every week, so there may be gray 'No Trend Available' dots

Source: [VDH Wastewater Dashboard](#)

### Mpox Cases in Virginia, Epi Curve (5/2022 – 7/2024)



<https://www.vdh.virginia.gov/monkeypox/data-in-virginia/>

<b>Total Cases</b>	<b>601</b>
<b>Hospitalizations</b>	<b>35</b>
<b>Deaths</b>	<b>2</b>

### Mpox Cases By Age and Sex (as of 8/06/2024)

Age Group	Cases
0-9 Years	0 (0.0%)
10-14 Years	1 (0.2%)
15-19 Years	16 (2.7%)
20-29 Years	214 (35.6%)
30-39 Years	241 (40.1%)
40-49 Years	89 (14.8%)
50-59 Years	34 (5.7%)
60-69 Years	4 (0.7%)
70+ Years	2 (0.3%)
Sex	
Female	34 (5.7%)
Male	567 (94.3%)

\*Data represent investigations with notifications submitted in VEDSS.