

# RSV/Influenza/COVID/Mpox Updates

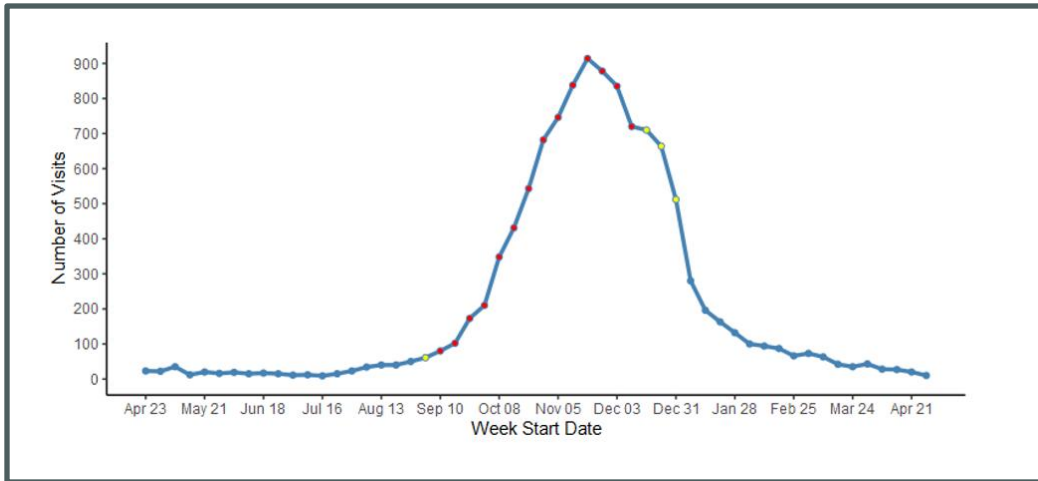
**\*Diagnosed Respiratory Syncytial Virus (RSV)**

|   |                                |
|---|--------------------------------|
| 04/21– 04/27<br>(MMWR Week 17)  | 04/28– 05/04<br>(MMWR Week 18) |
| 20 visits   | <b>10 visits (-50%)</b>        |
| * RSV - ED and urgent care visits that include RSV in the discharge diagnosis (not necessarily confirmed cases). Percent change is from week prior. |                                |

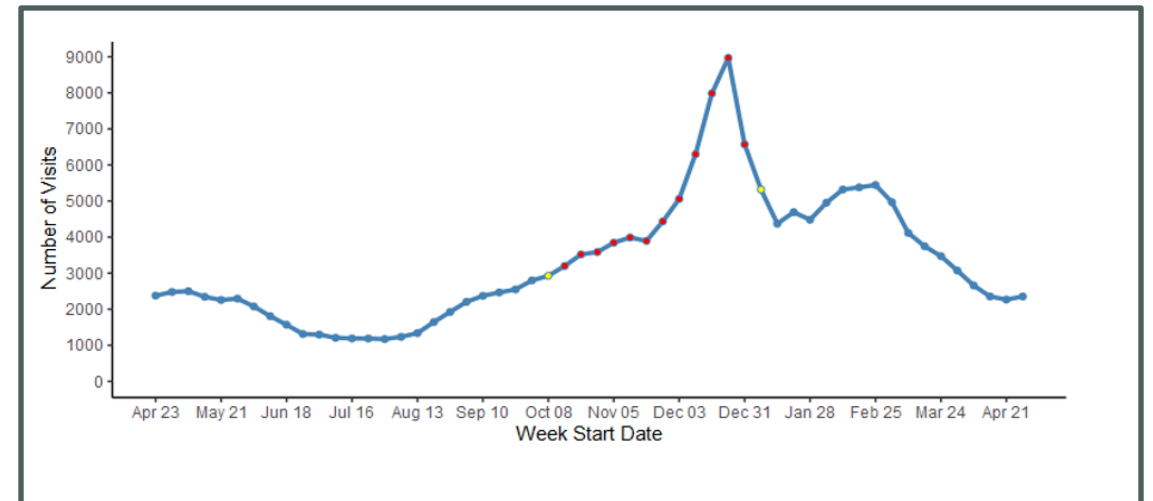
**\*Influenza-Like Illness (Excluding Diagnosed COVID-19) ED and Urgent Care Visits**

|   |                                |
|---|--------------------------------|
| 04/21– 04/27<br>(MMWR Week 17)  | 04/28– 05/04<br>(MMWR Week 18) |
| 2,268 visits  | <b>2,353 visits (&lt;5%)</b>   |
| * ILI - ED and urgent care visits with a chief complaint of 'flu' or fever + sore throat/cough. <b>Visits with diagnosed COVID-19 are excluded.</b> Percent change is from week prior |                                |

**Weekly ED and Urgent Care Visits with Diagnosed RSV  
04/23/23 – 05/04/24**



**Weekly ED and Urgent Care Visits for ILI Excluding Diagnosed COVID-19  
4/23/23 – 05/04/24**



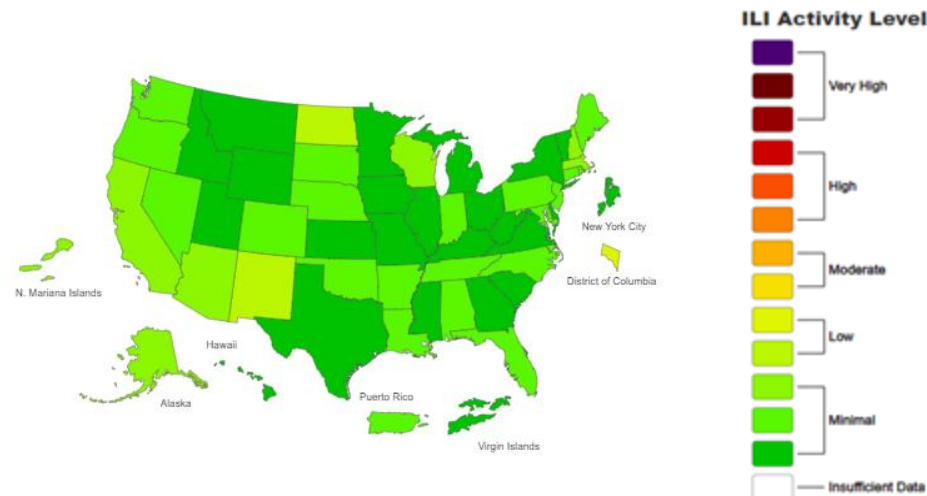
Source: VDH Weekly Respiratory Disease Surveillance Report. Percentage change is calculated off prior week's visits. Data are preliminary and subject to change. RSV Net: <https://www.cdc.gov/rsv/research/rsv-net/dashboard.html>

# Virginia: Respiratory Disease Situation Summary

## National View

For Week ending May 4:

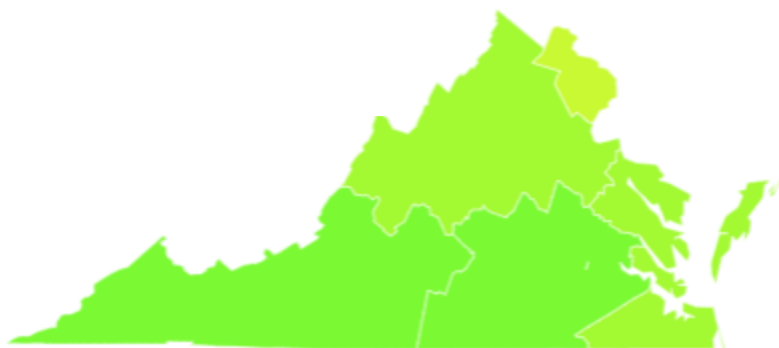
- Cumulative hospitalization rate is 80.3 per 100k
- Seasonal influenza activity continues to decline nationally and in most areas of the country.



Source: [CDC Fluview \(10/21\)](#)

## ILI Activity Level by Region

Week ending May 4, 2024



## Virginia View

- For the week ending May 4, 2024; Virginia has **minimal** ILI activity
  - 4 regions are at minimal ILI activity level, and 1 region is at a low LI activity level
  - VA investigated 121 influenza outbreaks during the 2023-2024 season
  - VA reported 3 influenza associated pediatric death for the 2023-2024 season
- VDH is sharing information with key stakeholders and the public:
  - [External flu dashboard](#) updated every Thursday
  - Respiratory Disease Report posted externally and shared every Friday (email) [flu@vdh.virginia.gov](mailto:flu@vdh.virginia.gov) to request the report.

**Virginia Data: Week ending May 4, MMWR week 18:**

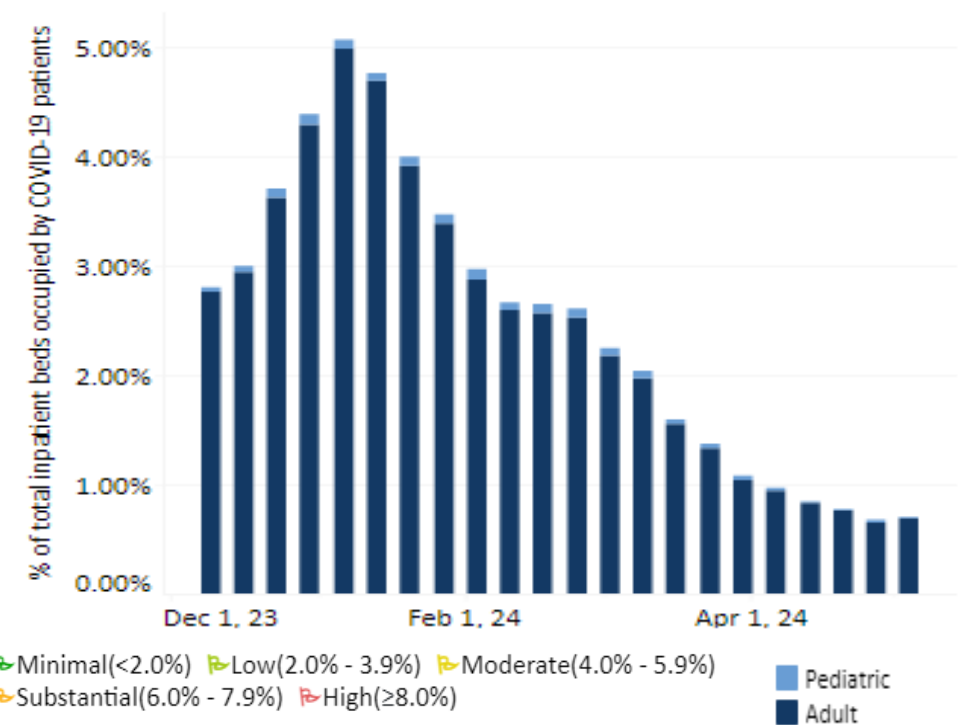
- .33% of ED visits were for diagnosed COVID-19 (**10.8% decrease** from previous week)
- .71% of inpatient beds in use for COVID-19 (<5% change from previous week)
- 1.35 Hospital Admissions per 100,000 population (**46.6% decrease** from previous week)

% Beds Occupied by Patients with COVID-19 is **Minimal** ➔

**Weekly Percent of Emergency Department Visits for Diagnosed COVID-19 in Virginia, December 2023 – May 2024**



**COVID-19 Hospital Beds in Use for COVID-19 Virginia, December 2023 – May 2024**

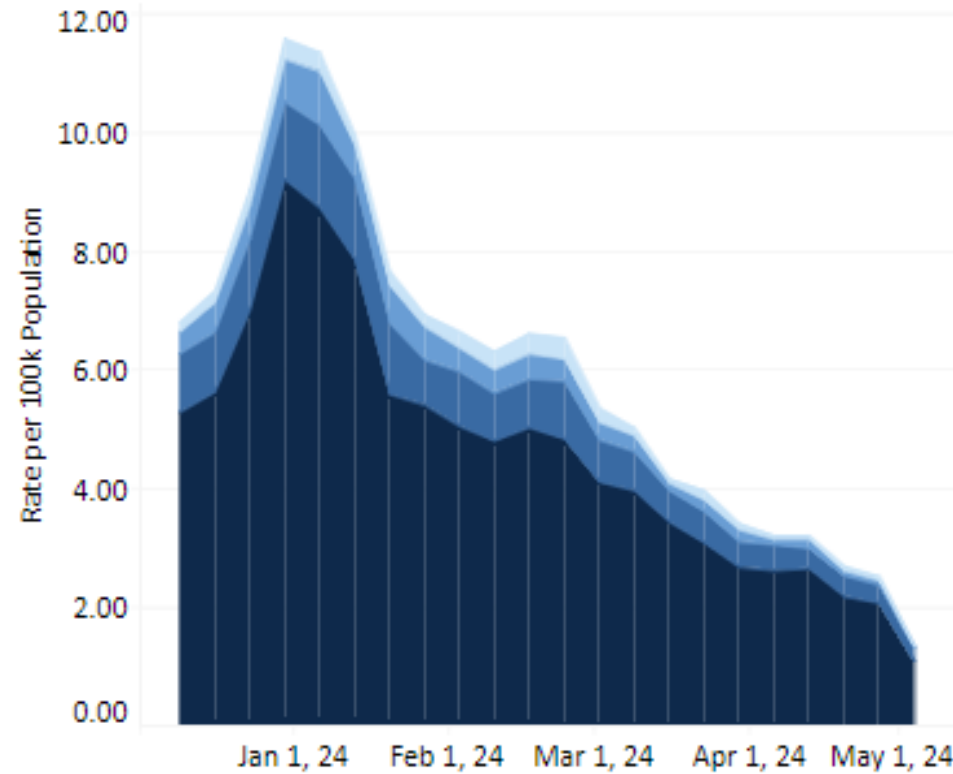


\*Source: [CDC COVID Data Tracker](#), [VDH COVID-19 Dashboard](#)  
 VDH Weekly Respiratory Disease Surveillance Report. Percentage change is calculated off updated case numbers from week prior.  
 \*Data comparisons: Wednesday-Wednesday

Centers for Medicare & Medicaid Services (CMS) COVID-19 hospital reporting requirements expired April 30, 2024. Data may be incomplete after this date.

**Virginia's COVID-19 Hospital Admissions for the week ending May 4, 2024:**

- 1.35 Hospital Admissions per 100,000 population (**decreased 46.6%** from previous week)



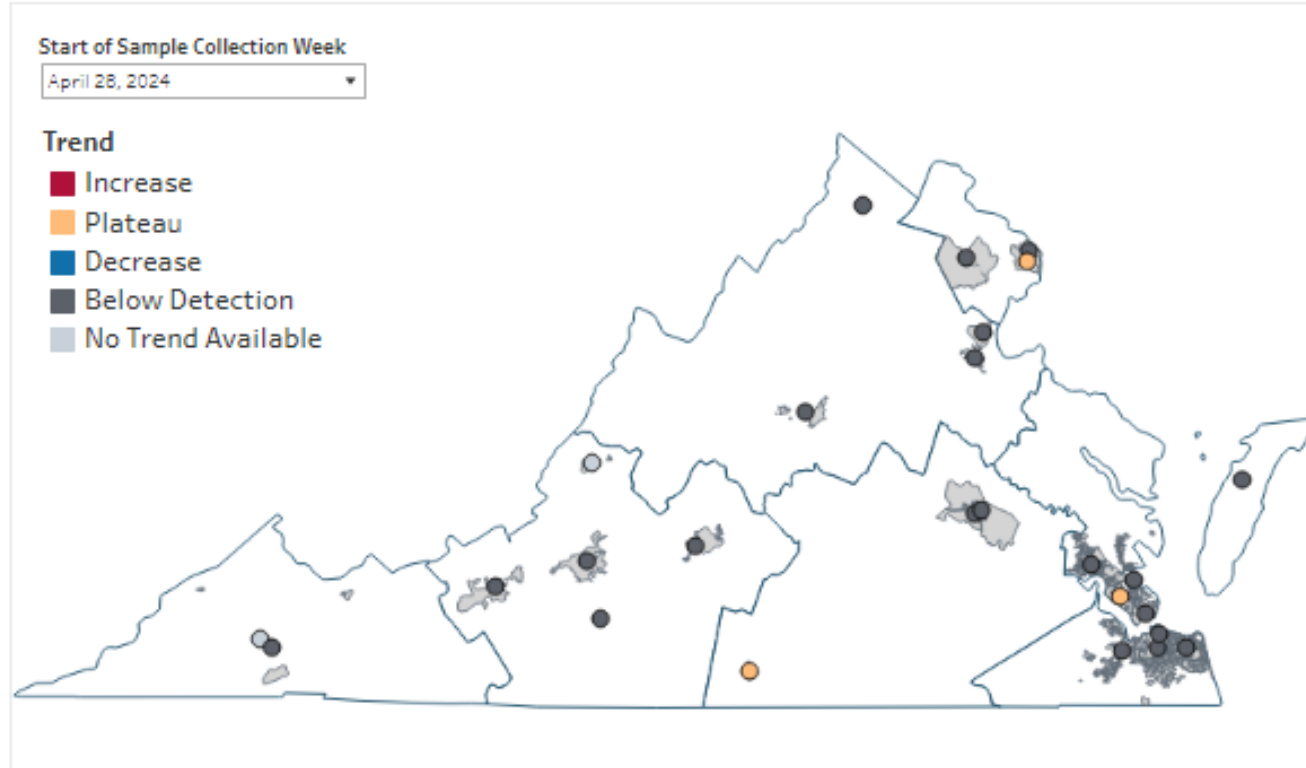
New COVID-19 Hospital Admissions are **Low** ↗

Centers for Medicare & Medicaid Services (CMS) COVID-19 hospital reporting requirements expired April 30, 2024. Data may be incomplete after this date.

↗ Low (<10.0)   
 ↔ Medium (10.0 - 19.9)   
 ↘ High (>20.0)

## COVID-19 Wastewater Surveillance –

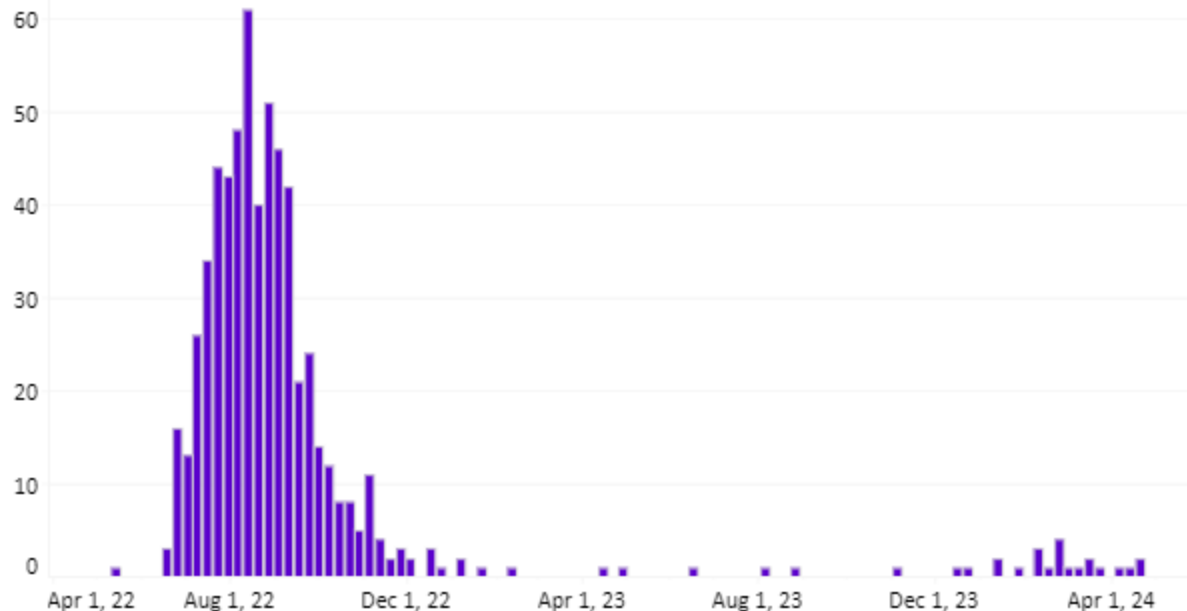
Week ending May 4, 2024:



- This map of Virginia shows the locations and overall viral load trends of the wastewater collection sites enrolled in the Sentinel Monitoring Program.
- The trend is indicated by the color of the 'dot'. See legend below. Not all sites produce data every week, so there may be gray 'No Trend Available' dots

Source: [VDH Wastewater Dashboard](#)

### Mpox Cases in Virginia, Epi Curve (5/2022 – 5/2024)



<https://www.vdh.virginia.gov/monkeypox/data-in-virginia/>

|                         |            |
|-------------------------|------------|
| <b>Total Cases</b>      | <b>598</b> |
| <b>Hospitalizations</b> | <b>35</b>  |
| <b>Deaths</b>           | <b>2</b>   |

### Mpox Cases By Age and Sex (as of 5/07/2024)

| Age Group   | Cases       |
|-------------|-------------|
| 0-9 Years   | 0 (0.0%)    |
| 10-14 Years | 1 (0.2%)    |
| 15-19 Years | 16 (2.7%)   |
| 20-29 Years | 213 (35.6%) |
| 30-39 Years | 240 (40.1%) |
| 40-49 Years | 89 (14.9%)  |
| 50-59 Years | 33 (5.5%)   |
| 60-69 Years | 4 (0.7%)    |
| 70+ Years   | 2 (0.3%)    |
| Sex         |             |
| Female      | 34 (5.7%)   |
| Male        | 564 (94.3%) |

\*Data represent investigations with notifications submitted in VEDSS.