

# RSV/Influenza/COVID/Mpox Updates

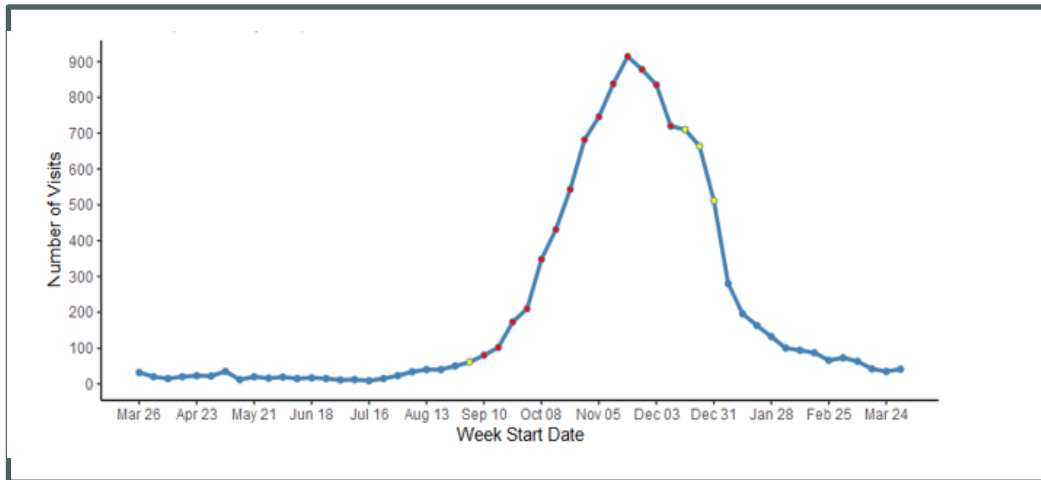
**\*Diagnosed Respiratory Syncytial Virus (RSV)**

03/24– 03/30 (MMWR Week 13)	03/31– 04/06 (MMWR Week 14)
35 visits	<b>41 (+17%)</b>
* RSV - ED and urgent care visits that include RSV in the discharge diagnosis (not necessarily confirmed cases). Percent change is from week prior.	

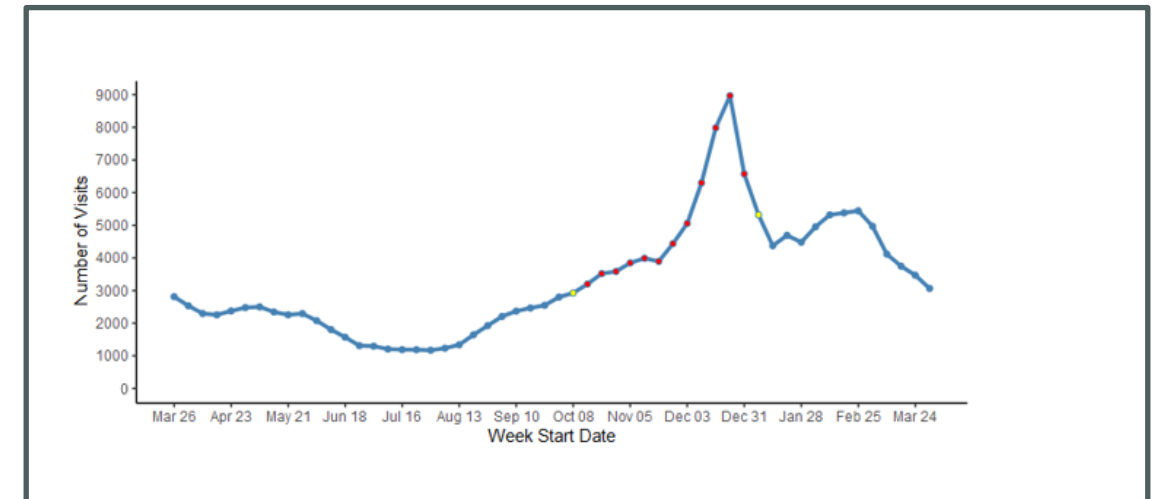
**\*Influenza-Like Illness (Excluding Diagnosed COVID-19) ED and Urgent Care Visits**

03/24– 03/30 (MMWR Week 13)	03/31– 04/06 (MMWR Week 14)
3,469 visits	<b>3,064 visits (-12%)</b>
* ILI - ED and urgent care visits with a chief complaint of 'flu' or fever + sore throat/cough. <b>Visits with diagnosed COVID-19 are excluded.</b> Percent change is from week prior	

**Weekly ED and Urgent Care Visits with Diagnosed RSV  
3/26/23 – 04/06/24**



**Weekly ED and Urgent Care Visits for ILI Excluding Diagnosed COVID-19  
3/26/23 – 04/06/24**



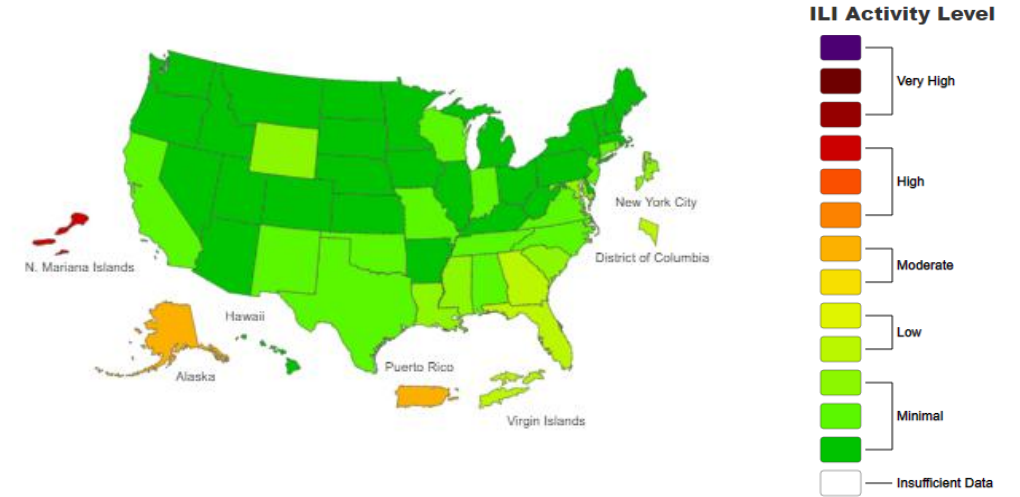
Source: VDH Weekly Respiratory Disease Surveillance Report. Percentage change is calculated off prior week's visits. Data are preliminary and subject to change. RSV Net: <https://www.cdc.gov/rsv/research/rsv-net/dashboard.html>

# Virginia: Respiratory Disease Situation Summary

## National View

For Week ending March 30:

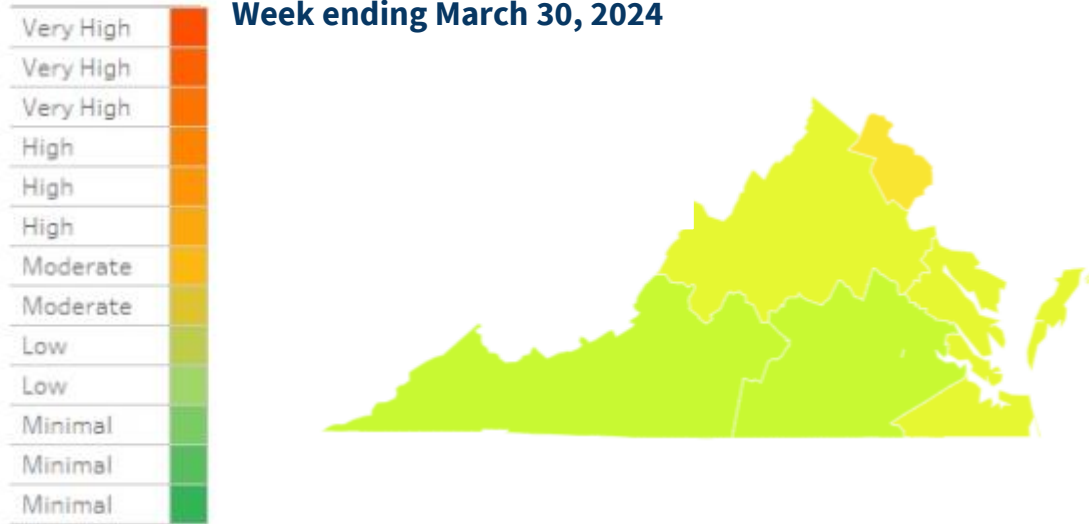
- Seasonal influenza activity is elevated and continues to increase in most parts of the country.
  - Cumulative hospitalization rate is 74.2 per 100k
  - Seasonal influenza activity remains elevated but is decreasing nationally.



Source: [CDC Fluview \(10/21\)](#)

## ILI Activity Level by Region

Week ending March 30, 2024



## Virginia View

- For the week ending March 30, 2024; Virginia has **low** ILI activity
  - 4 regions are at low ILI activity level, and 1 region is at moderate ILI activity levels.
  - VA investigated 112 influenza outbreaks during the 2023-2024 season
  - VA reported 3 influenza associated pediatric death for the 2023-2024 season
- VDH is sharing information with key stakeholders and the public:
  - [External flu dashboard](#) updated every Thursday
  - Respiratory Disease Report posted externally and shared every Friday (email) [flu@vdh.virginia.gov](mailto:flu@vdh.virginia.gov) to request the report.

**Virginia Data: Week ending April 6, MMWR week 14:**

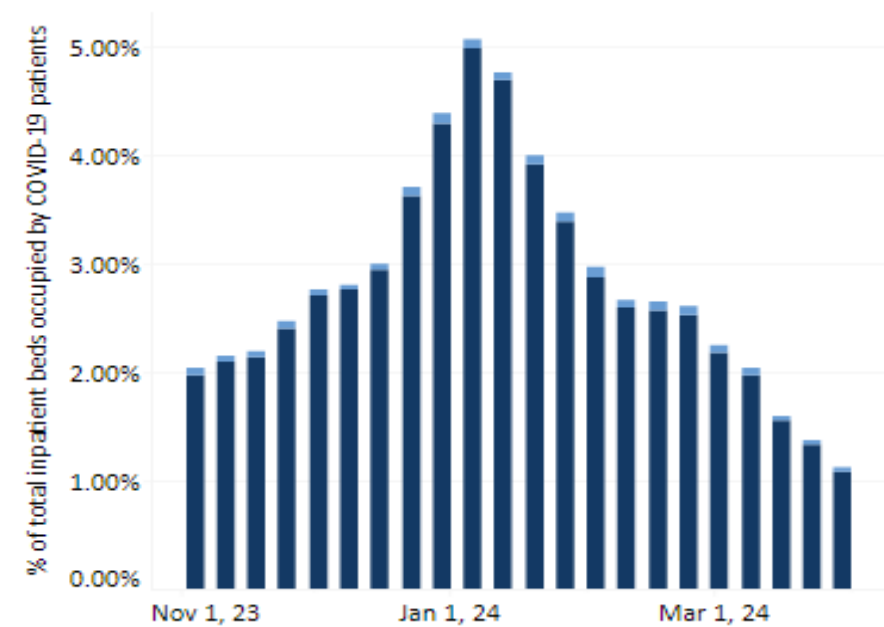
- **.52%** of ED visits were for diagnosed COVID-19 (**20% decrease** from previous week)
- **1.01%** of inpatient beds in use for COVID-19 (**7.3% decrease** from previous week)
- **3.26** Hospital Admissions per 100,000 population (**9% decrease** from previous week)

% Beds Occupied by Patients with COVID-19 is **Minimal** ↗

**Weekly Percent of Emergency Department Visits for Diagnosed COVID-19 in Virginia, November 2023 – March 2024**



**COVID-19 Hospital Beds in Use for COVID-19 Virginia, November 2023 – March 2024**



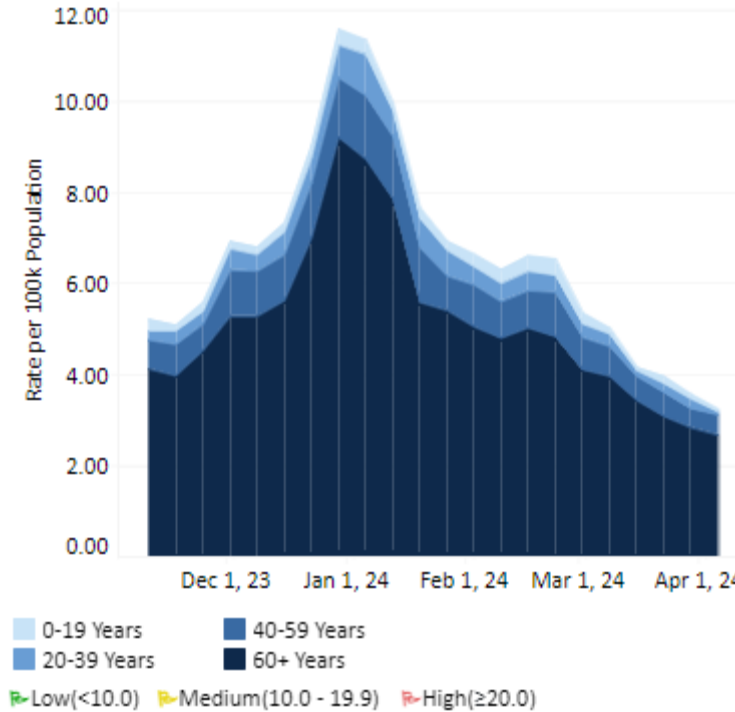
Minimal(<2.0%) Low(2.0% - 3.9%) Moderate(4.0% - 5.9%)  
 Substantial(6.0% - 7.9%) High(>=8.0%)

■ Pediatric  
 ■ Adult

\*Source: [CDC COVID Data Tracker](#), [VDH COVID-19 Dashboard](#)  
 VDH Weekly Respiratory Disease Surveillance Report. Percentage change is calculated off updated case numbers from week prior.  
 \*Data comparisons: Wednesday-Wednesday

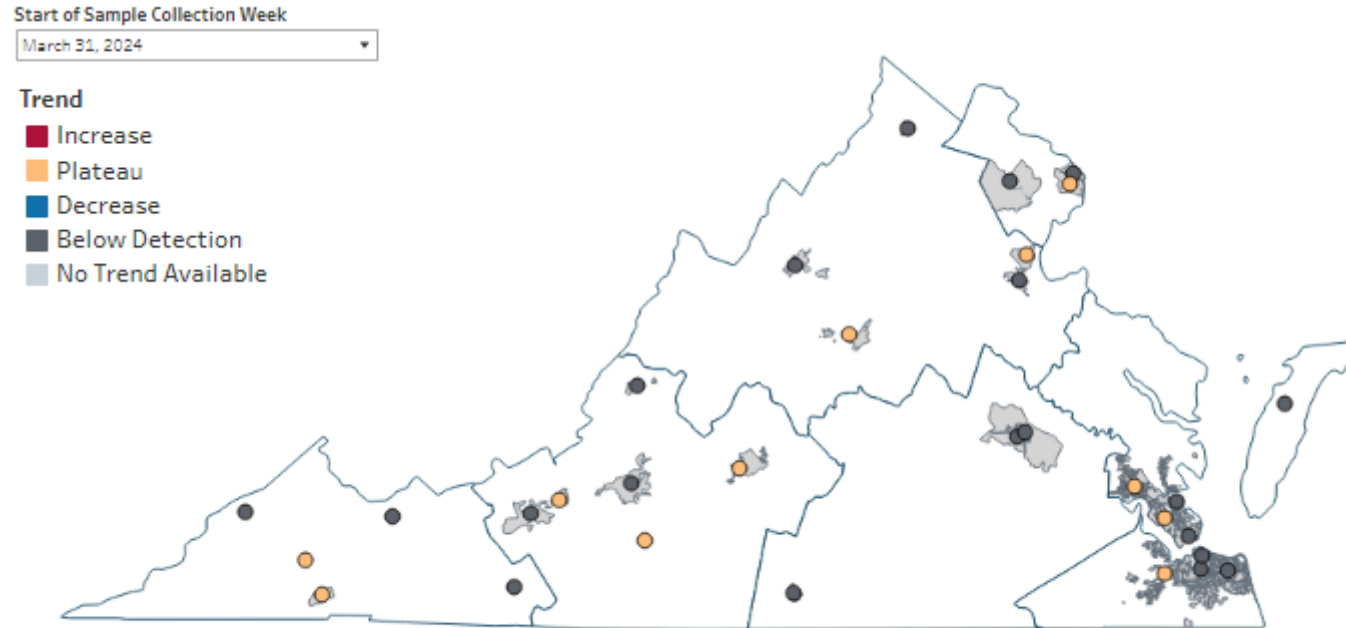
**Virginia's COVID-19 Hospital Admissions for the week ending April 6, 2024:**

- **3.26** Hospital Admissions per 100,000 population (**decreased 9%** from previous week)



New COVID-19 Hospital Admissions are **Low** ↗

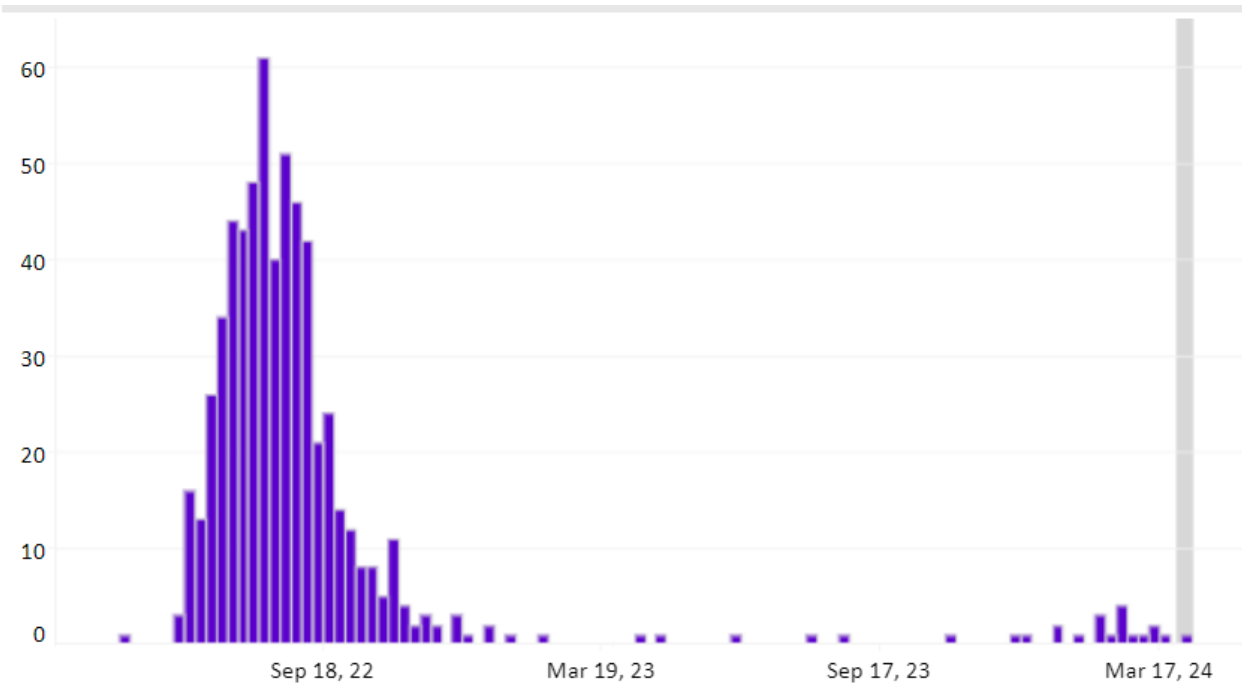
## COVID-19 Wastewater Surveillance –



- This map of Virginia shows the locations and overall viral load trends of the wastewater collection sites enrolled in the Sentinel Monitoring Program.
- The trend is indicated by the color of the 'dot'. See legend below. Not all sites produce data every week, so there may be gray 'No Trend Available' dots

Source: [VDH Wastewater Dashboard](#)

### Mpox Cases in Virginia, Epi Curve (5/2022 – 3/2024)



<https://www.vdh.virginia.gov/monkeypox/data-in-virginia/>

<b>Total Cases</b>	<b>595</b>
<b>Hospitalizations</b>	<b>35</b>
<b>Deaths</b>	<b>2</b>

### Mpox Cases By Age and Sex (as of 4/9/2024)

Age Group	Cases
0-9 Years	0 (0.0%)
10-14 Years	1 (0.2%)
15-19 Years	16 (2.7%)
20-29 Years	212 (35.7%)
30-39 Years	238 (39.9%)
40-49 Years	89 (15.0%)
50-59 Years	33 (5.6%)
60-69 Years	4 (0.7%)
70+ Years	2 (0.3%)
Sex	
Female	33 (5.6%)
Male	562 (94.4%)

\*Data represent investigations with notifications submitted in VEDSS.