

RSV/Influenza/COVID/Mpox Updates

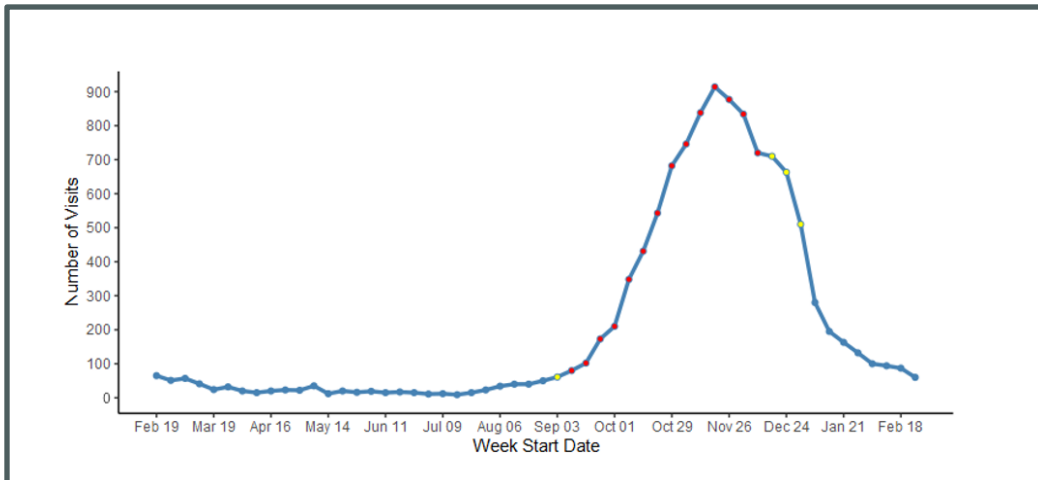
***Diagnosed Respiratory Syncytial Virus (RSV)**

2/18- 2/24 (MMWR Week 8)	2/25- 03/02 (MMWR Week 9)
87 visits	60 (-31%)
* RSV - ED and urgent care visits that include RSV in the discharge diagnosis (not necessarily confirmed cases). Percent change is from week prior.	

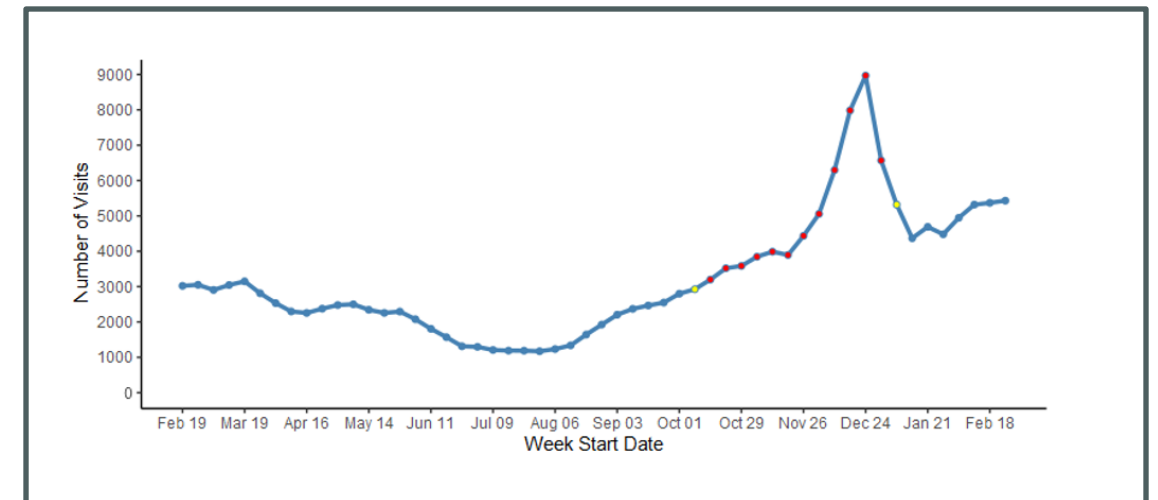
***Influenza-Like Illness (Excluding Diagnosed COVID-19) ED and Urgent Care Visits**

2/18- 2/24 (MMWR Week 8)	2/25- 03/02 (MMWR Week 9)
5,370 visits	5,431 (<5%)
* ILI - ED and urgent care visits with a chief complaint of 'flu' or fever + sore throat/cough. Visits with diagnosed COVID-19 are excluded. Percent change is from week prior	

**Weekly ED and Urgent Care Visits with Diagnosed RSV
2/19/23 - 3/2/24**



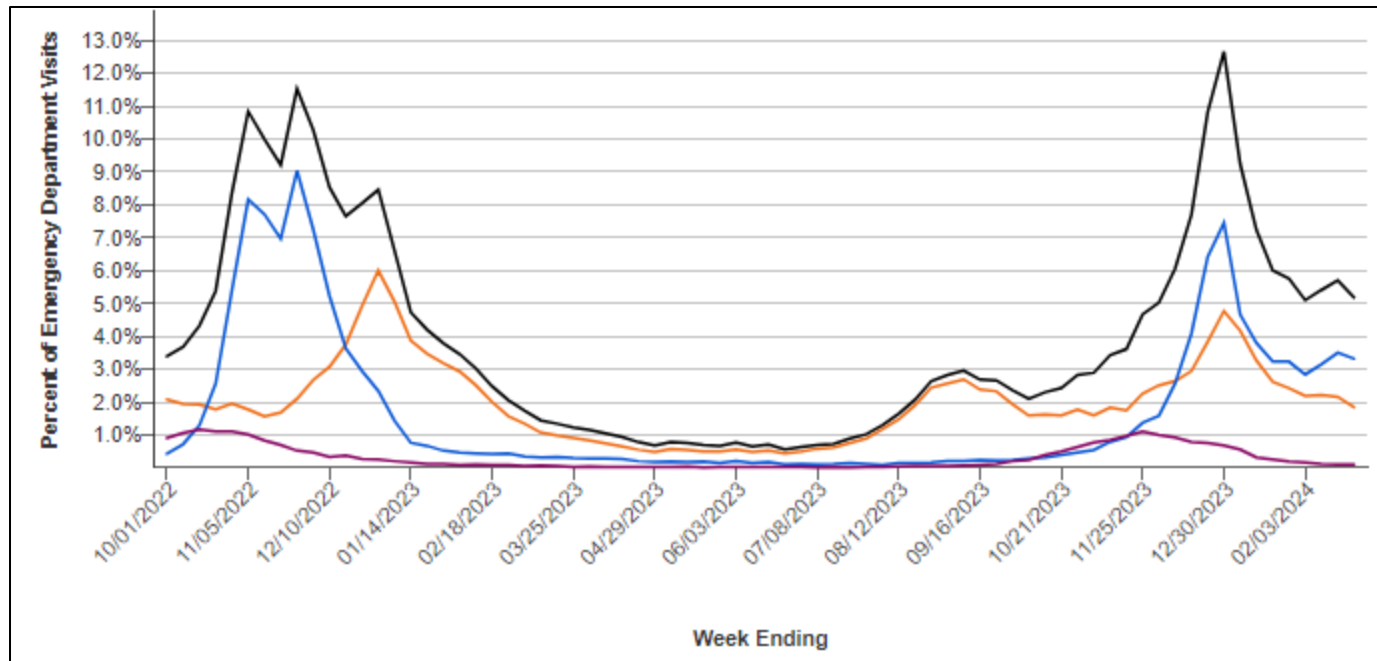
**Weekly ED and Urgent Care Visits for ILI Excluding Diagnosed COVID-19
2/19/23 - 3/2/24**



Source: VDH Weekly Respiratory Disease Surveillance Report. Percentage change is calculated off prior week's visits. Data are preliminary and subject to change. RSV Net: <https://www.cdc.gov/rsv/research/rsv-net/dashboard.html>

ED Visits for Viral Respiratory Illness, VA

Emergency Department Visits for Viral Respiratory Illness, Virginia



Week Ending: 02/24/2024

Combined: 5.2%
 COVID-19: 1.8%
 Influenza: 3.3%
 RSV: 0.1%

● Combined ● COVID-19 ● Influenza ● RSV

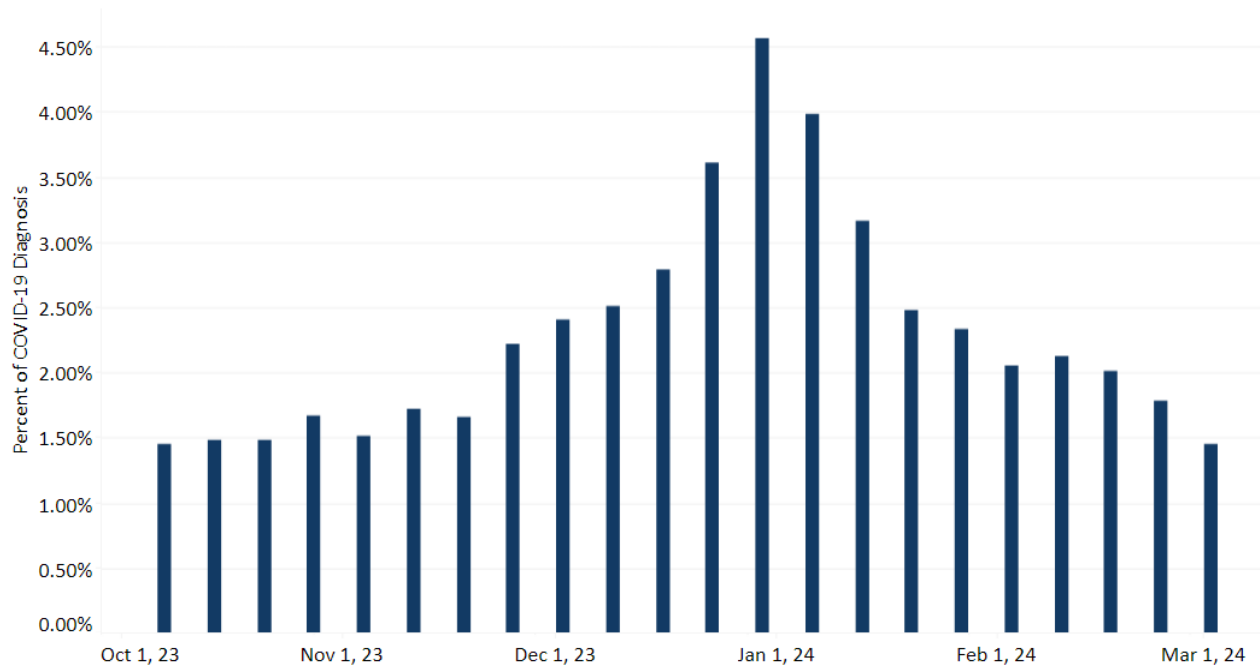
Data presented through: 02/24/2024; Data as of: 02/28/2024

Virginia Data: Week ending March 2, MMWR week 9:

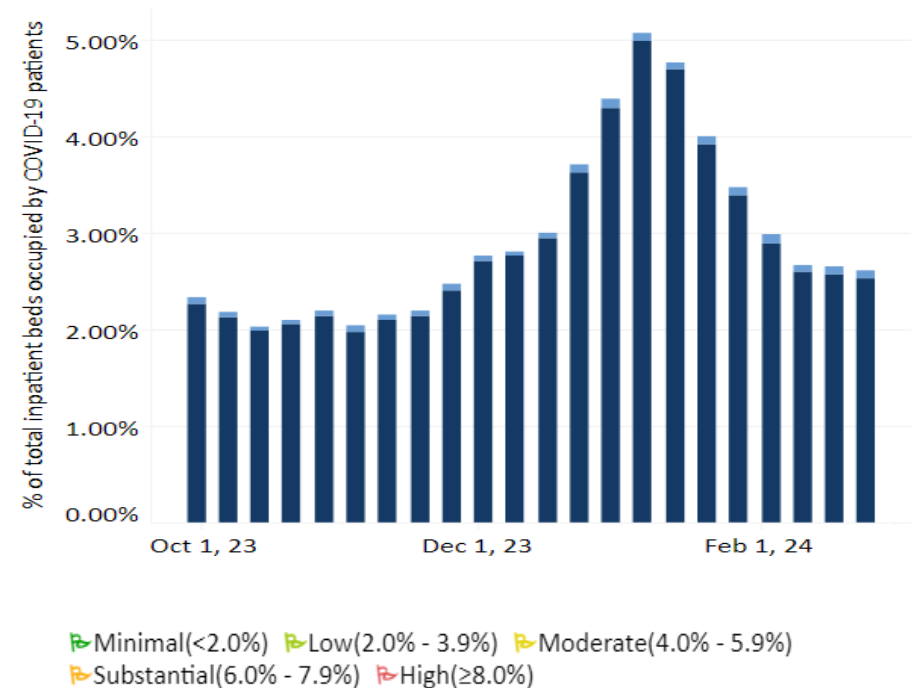
- **1.45%** of ED visits were for diagnosed COVID-19 (**18.5% decrease** from previous week)
- **2.61%** of inpatient beds in use for COVID-19 (**remained stable <5% change** from previous week)
- **6.60** Hospital Admissions per 100,000 population (**remained stable <5% change** from previous week)

% Beds Occupied by Patients with COVID-19 is **Low** 🟢

Weekly Percent of Emergency Department Visits for Diagnosed COVID-19 in Virginia, October 2023 – March 2024



COVID-19 Hospital Beds in Use for COVID-19 Virginia, October 2023 – March 2024



■ Pediatric
■ Adult

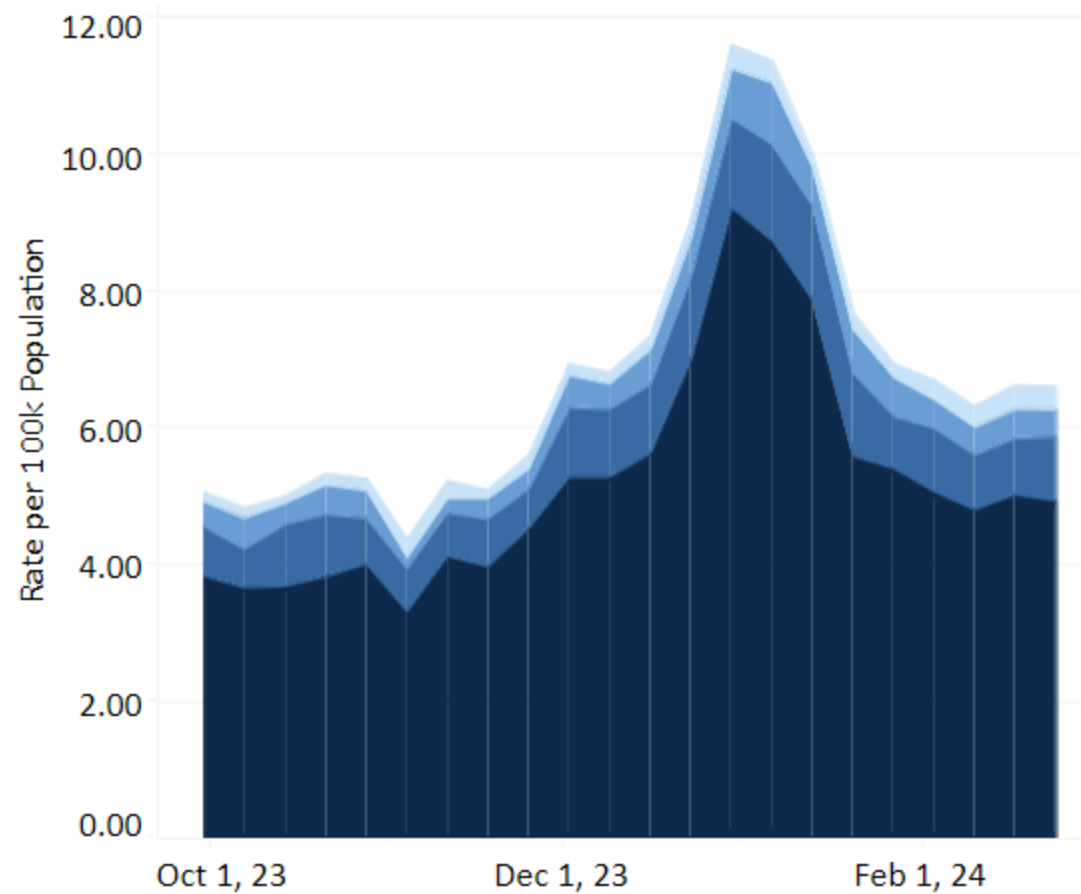
*Source: [CDC COVID Data Tracker](#), [VDH COVID-19 Dashboard](#)

VDH Weekly Respiratory Disease Surveillance Report. Percentage change is calculated off updated case numbers from week prior.

*Data comparisons: Wednesday-Wednesday

Virginia's COVID-19 Hospital Admissions for the week ending March 2, 2024:

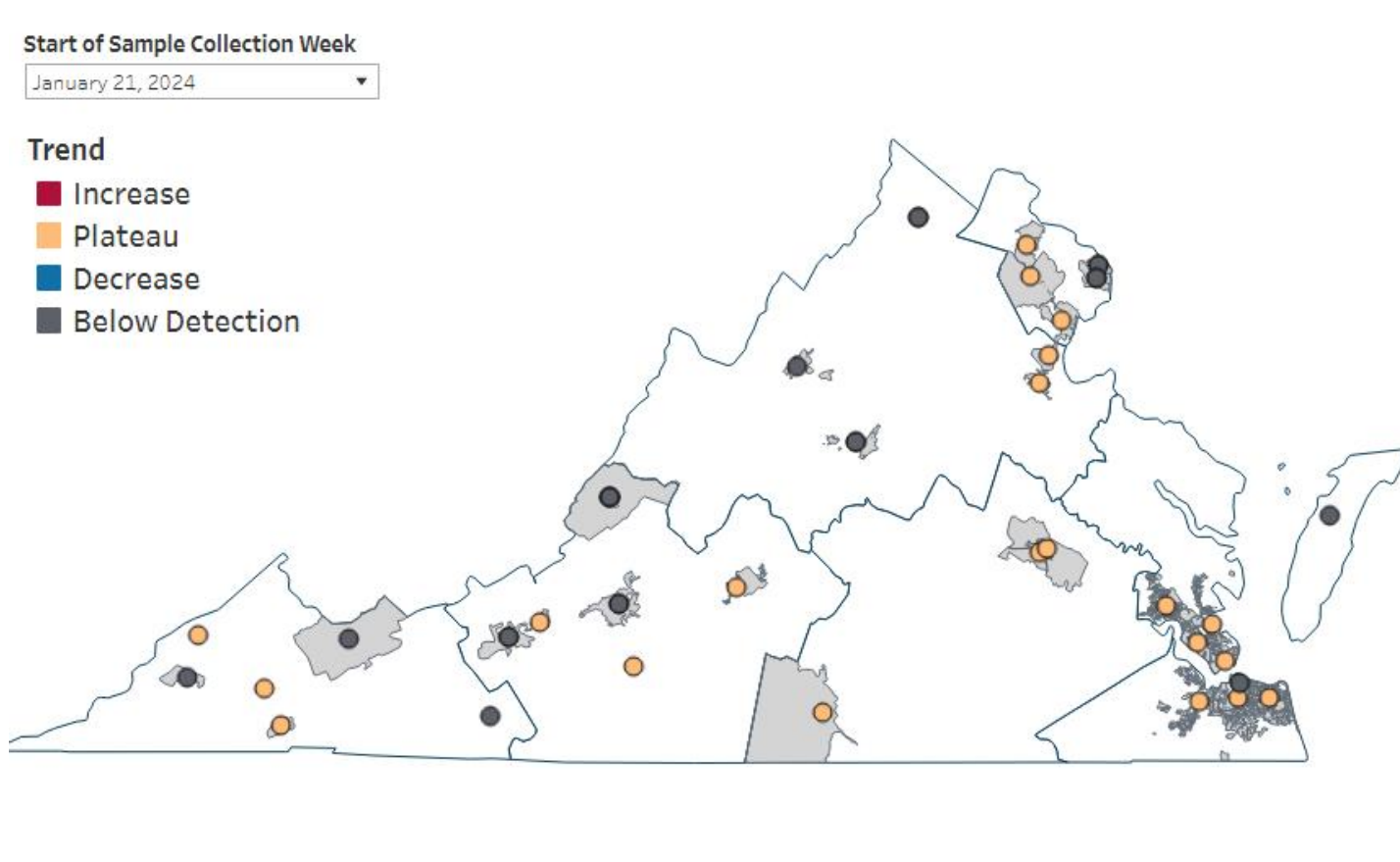
- **6.60** Hospital Admissions per 100,000 population (remained stable <5% change from previous week)



New COVID-19 Hospital Admissions are **Low** ↗

▮ 0-19 Years ▮ 40-59 Years
▮ 20-39 Years ▮ 60+ Years
↗ Low(<10.0) ↗ Medium(10.0 - 19.9) ↗ High(≥20.0)

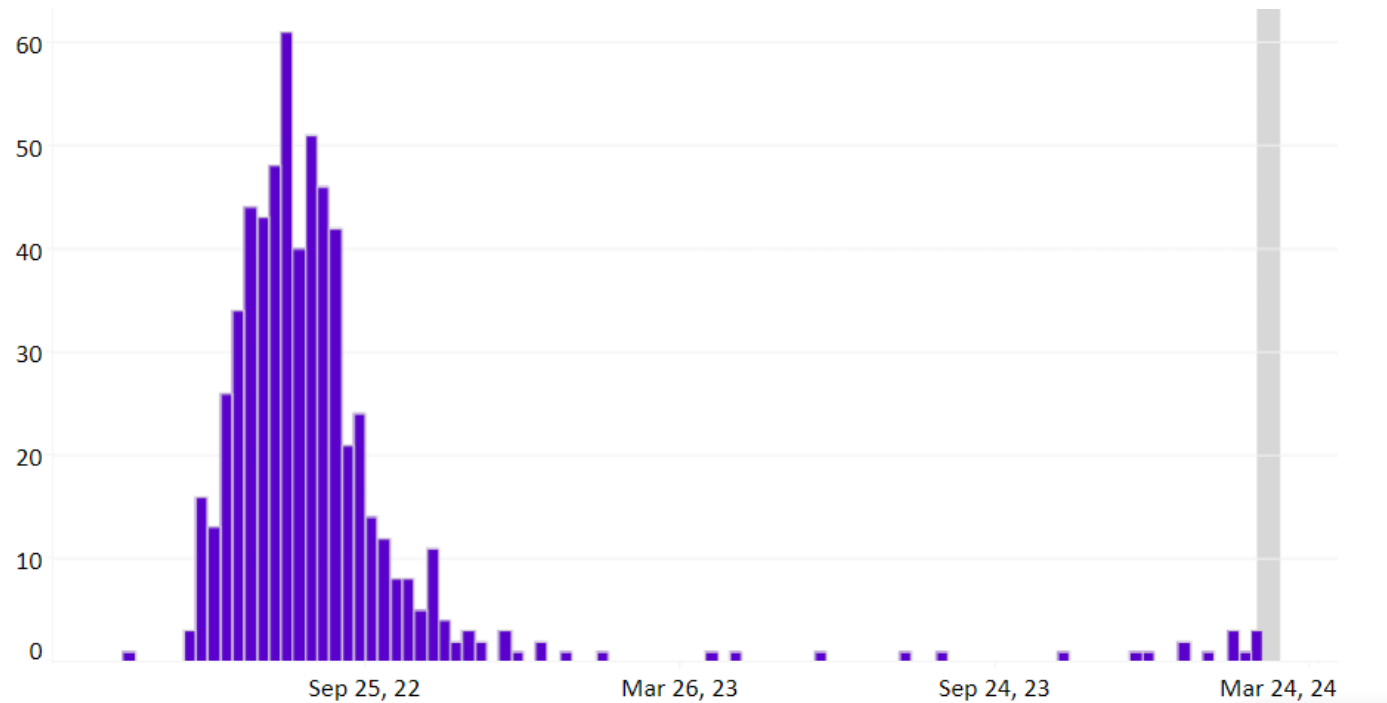
COVID-19 Wastewater Surveillance – please note: data is lagged



- This map of Virginia shows the locations and overall viral load trends of the wastewater collection sites enrolled in the Sentinel Monitoring Program.
- The trend is indicated by the color of the 'dot'. See legend below. Not all sites produce data every week, so there may be gray 'No Trend Available' dots

Source: [VDH Wastewater Dashboard](#)

Mpox Cases in Virginia, Epi Curve (5/2022 – 3/2024)



<https://www.vdh.virginia.gov/monkeypox/data-in-virginia/>

Total Cases	588
Hospitalizations	35
Deaths	2

Mpox Cases By Age and Sex (as of 3/2024)

Age Group	Cases
0-9 Years	0 (0.0%)
10-14 Years	1 (0.2%)
15-19 Years	16 (2.7%)
20-29 Years	211 (35.9%)
30-39 Years	234 (39.8%)
40-49 Years	87 (14.8%)
50-59 Years	33 (5.6%)
60-69 Years	4(0.7%)
70+ Years	2 (0.3%)
Sex	
Female	33 (5.6%)
Male	555 (94.4%)

*Data represent investigations with notifications submitted in VEDSS.