

RSV/Influenza/COVID/Mpx Updates

***Diagnosed Respiratory Syncytial Virus (RSV)**

2/11– 2/17 (MMWR Week 7)	2/18– 2/24 (MMWR Week 8)
93 visits	85 (-8%)

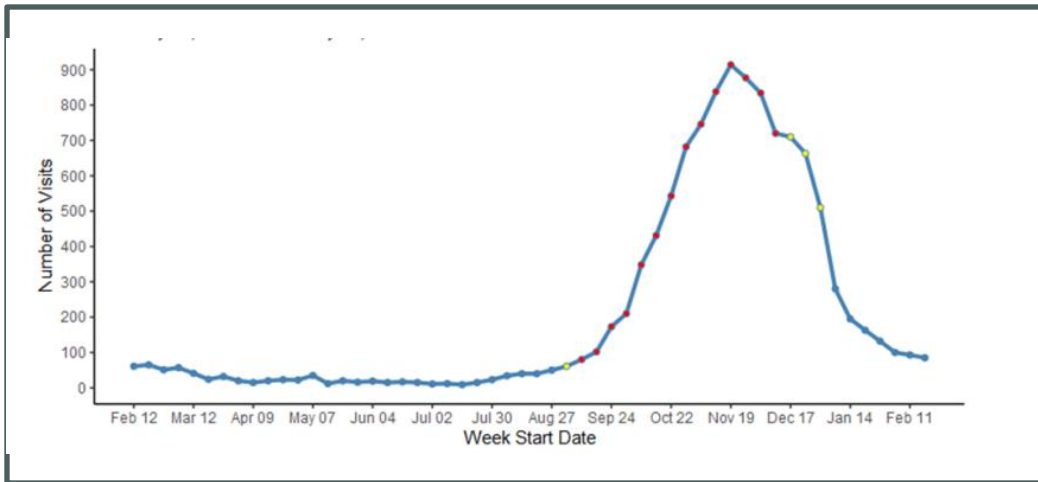
* RSV - ED and urgent care visits that include RSV in the discharge diagnosis (not necessarily confirmed cases). Percent change is from week prior.

***Influenza-Like Illness (Excluding Diagnosed COVID-19) ED and Urgent Care Visits**

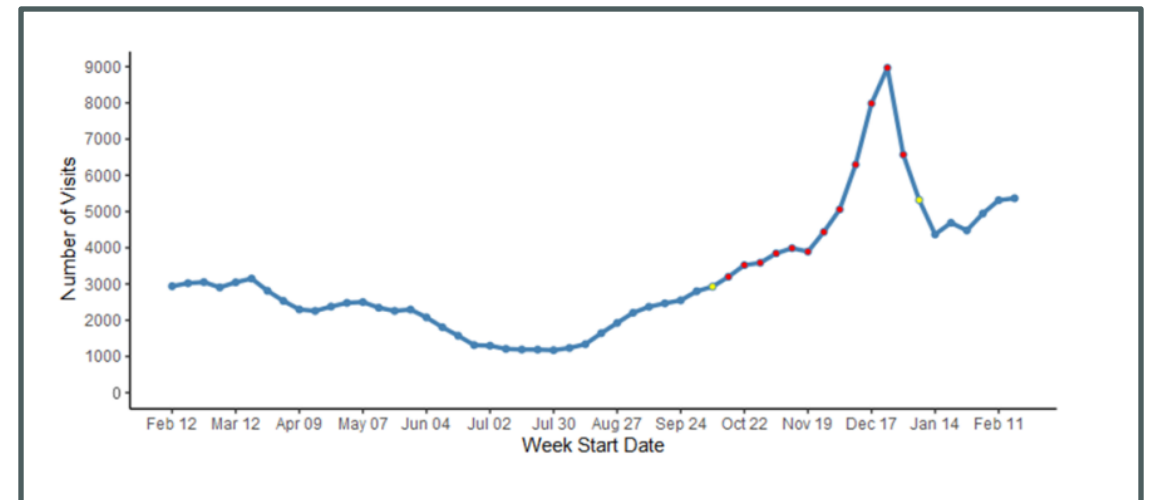
2/11– 2/17 (MMWR Week 7)	2/18– 2/24 (MMWR Week 8)
5,313 visits	5,367 (<5%)

* ILI - ED and urgent care visits with a chief complaint of 'flu' or fever + sore throat/cough. **Visits with diagnosed COVID-19 are excluded.** Percent change is from week prior

**Weekly ED and Urgent Care Visits with Diagnosed RSV
2/12/23 – 2/24/24**



**Weekly ED and Urgent Care Visits for ILI Excluding Diagnosed COVID-19
2/12/23 – 2/24/24**



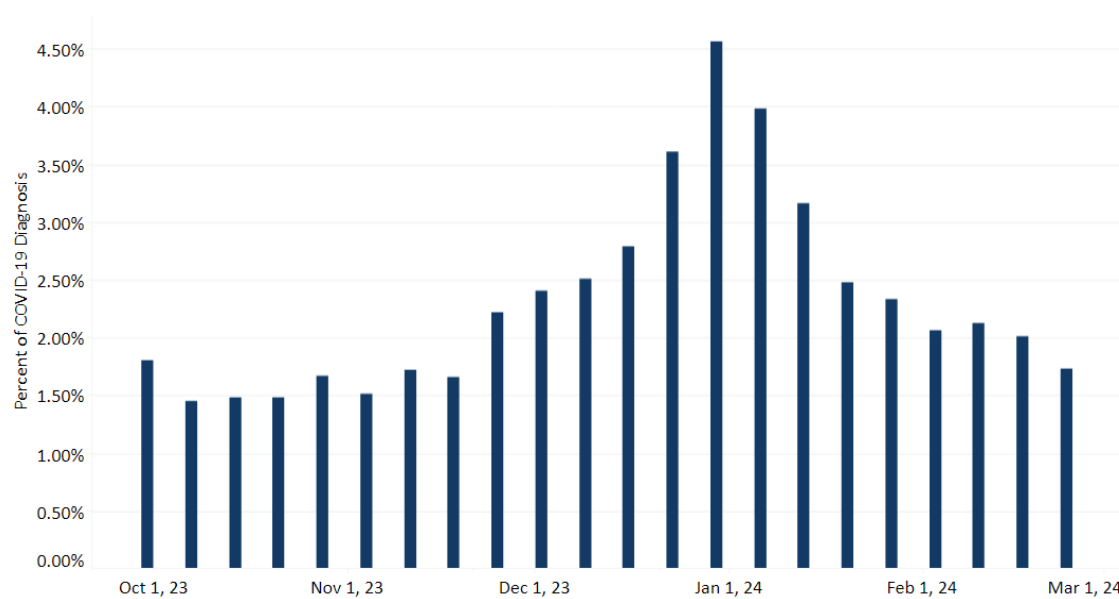
Source: VDH Weekly Respiratory Disease Surveillance Report. Percentage change is calculated off prior week's visits. Data are preliminary and subject to change. RSV Net: https://www.cdc.gov/rsv/res_ea/rsv-net/dashboard.html

Virginia Data: Week ending February 24, MMWR week 8:

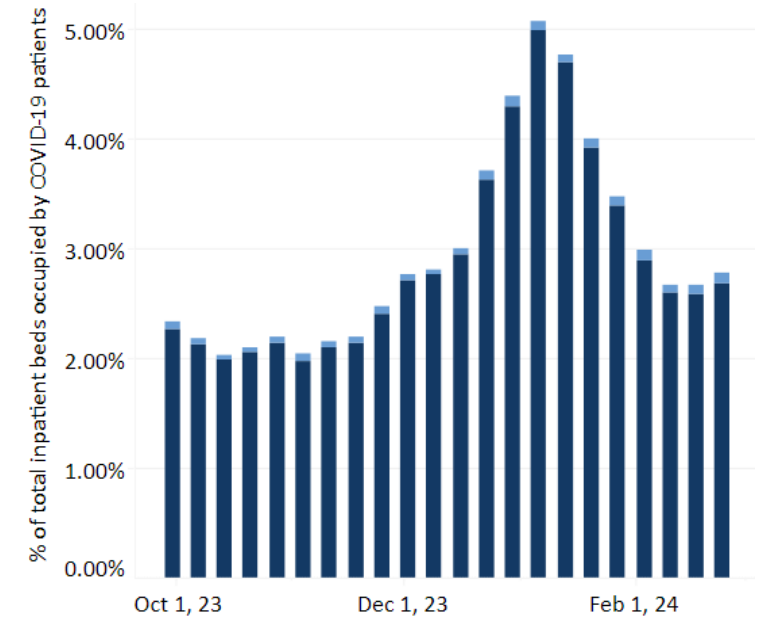
- **1.73%** of ED visits were for diagnosed COVID-19 (**13.9% decrease** from previous week)
- **2.78%** of inpatient beds in use for COVID-19 (**4.1% increase** from previous week)
- **4.16** Hospital Admissions per 100,000 population (**37.3% decrease** from previous week)

% Beds Occupied by Patients with COVID-19 is **Low** ↗

Weekly Percent of Emergency Department Visits for Diagnosed COVID-19 in Virginia, September 2023 – February 2024



COVID-19 Hospital Beds in Use for COVID-19 Virginia, September 2023 – February 2024



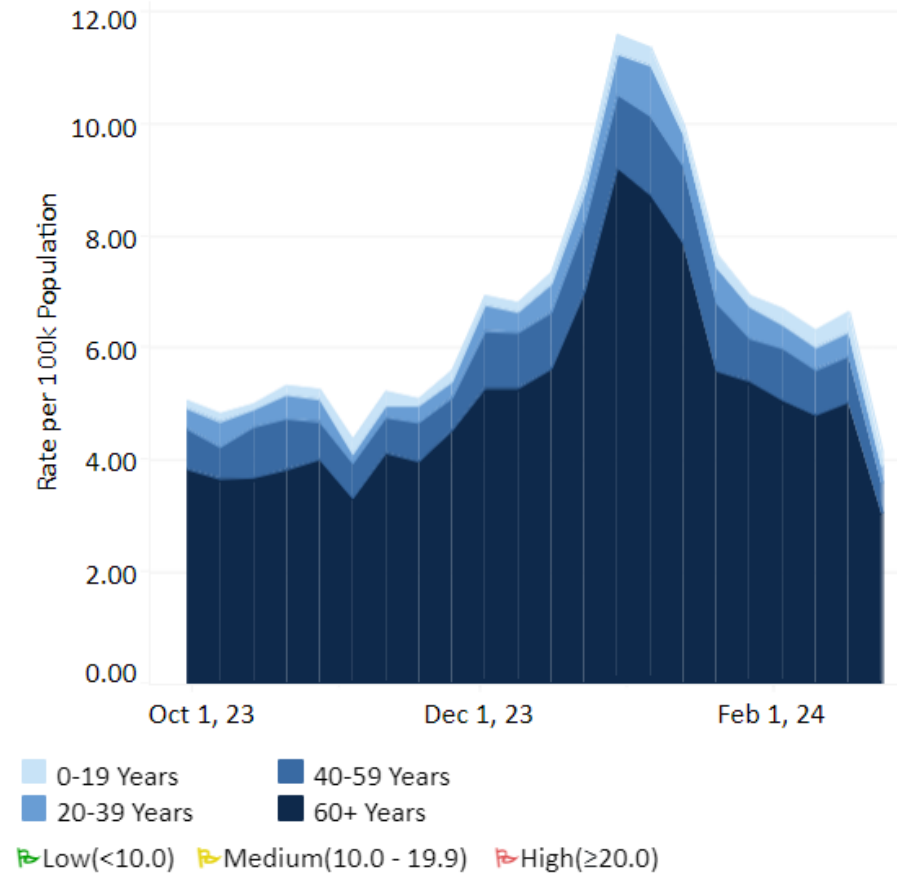
Minimal(<2.0%) Low(2.0% - 3.9%) Moderate(4.0% - 5.9%) Substantial(6.0% - 7.9%) High(≥8.0%)

■ Pediatric
■ Adult

*Source: [CDC COVID Data Tracker](#), [VDH COVID-19 Dashboard](#)
 VDH Weekly Respiratory Disease Surveillance Report. Percentage change is calculated off updated case numbers from week prior.
 *Data comparisons: Wednesday-Wednesday

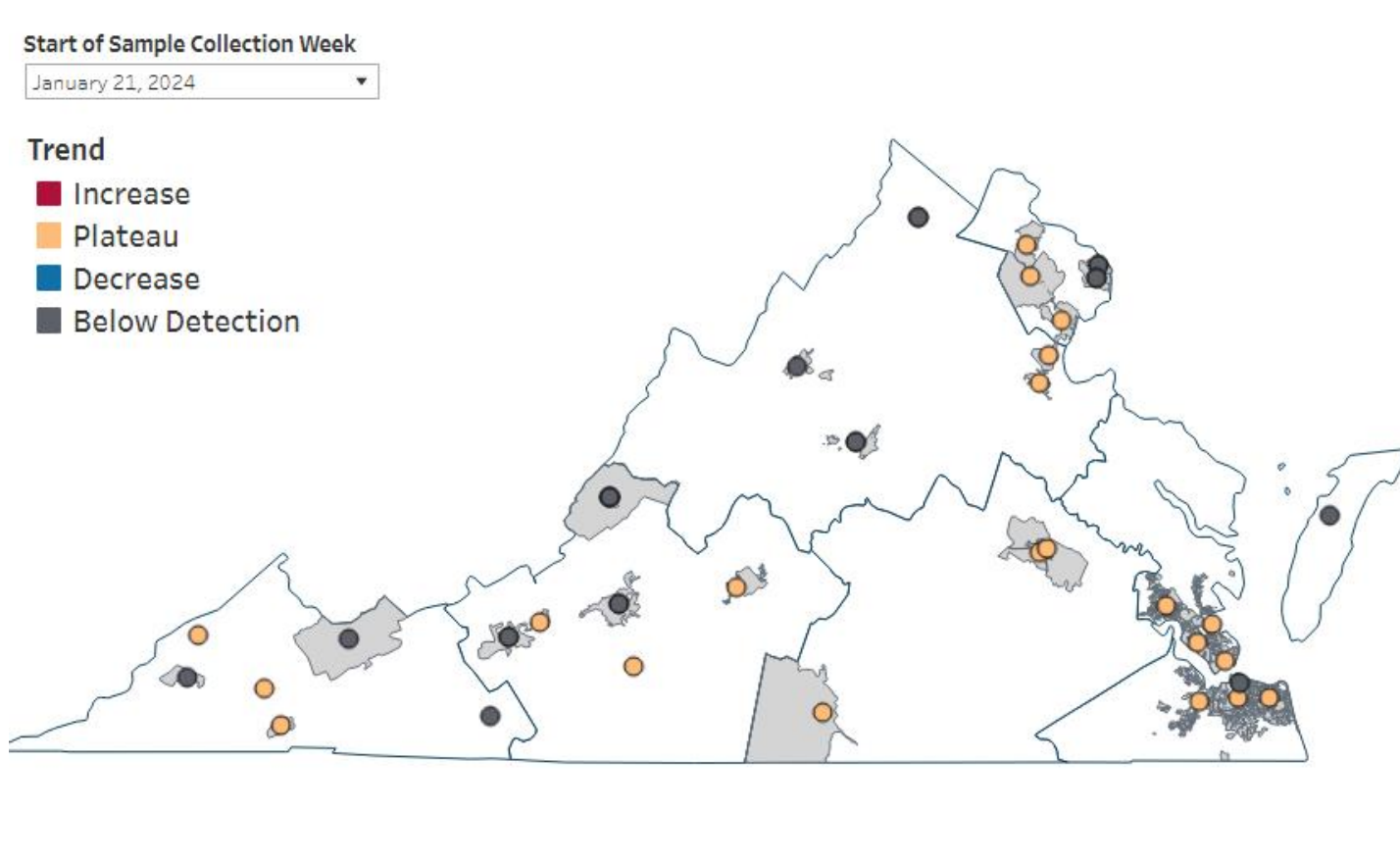
Virginia's COVID-19 Hospital Admissions for the week ending February 24, 2024:

- **4.16** Hospital Admissions per 100,000 population (**decreased 37.3%** from previous week)



New COVID-19 Hospital Admissions are **Low** ↗

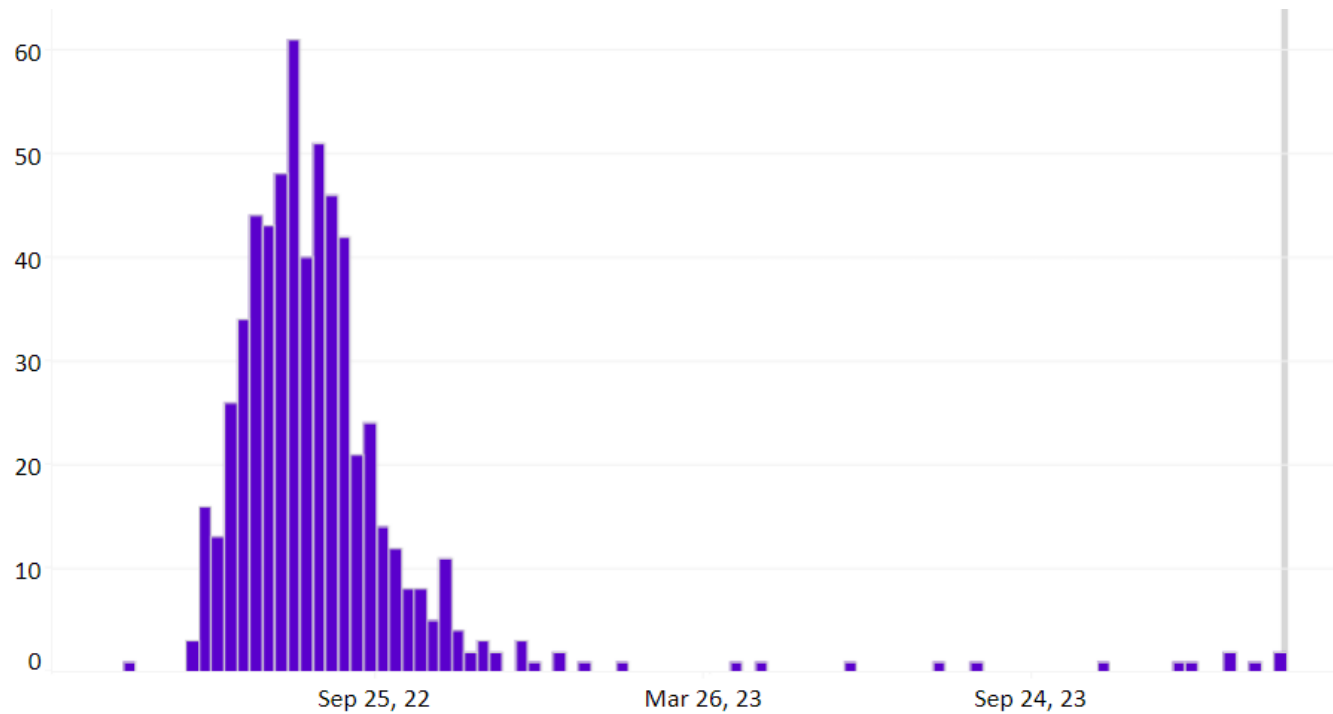
COVID-19 Wastewater Surveillance



- This map of Virginia shows the locations and overall viral load trends of the wastewater collection sites enrolled in the Sentinel Monitoring Program.
- The trend is indicated by the color of the 'dot'. See legend below. Not all sites produce data every week, so there may be gray 'No Trend Available' dots

Source: [VDH Wastewater Dashboard](#)

Mpox Cases in Virginia, Epi Curve (5/2022 – 2/2024)



<https://www.vdh.virginia.gov/monkeypox/data-in-virginia/>

Total Cases	584
Hospitalizations	34
Deaths	2

Mpox Cases By Age and Sex (as of 2/2024)

Age Group	Cases
0-9 Years	0 (0.0%)
10-14 Years	1 (0.2%)
15-19 Years	15 (2.6%)
20-29 Years	210 (36%)
30-39 Years	233 (39.9%)
40-49 Years	86 (14.7%)
50-59 Years	33 (5.7%)
60-69 Years	4(0.7%)
70+ Years	2 (0.3%)
Sex	
Female	33 (5.7%)
Male	551 (94.3%)

*Data represent investigations with notifications submitted in VEDSS.