

# RSV/Influenza/COVID/Mpox Updates

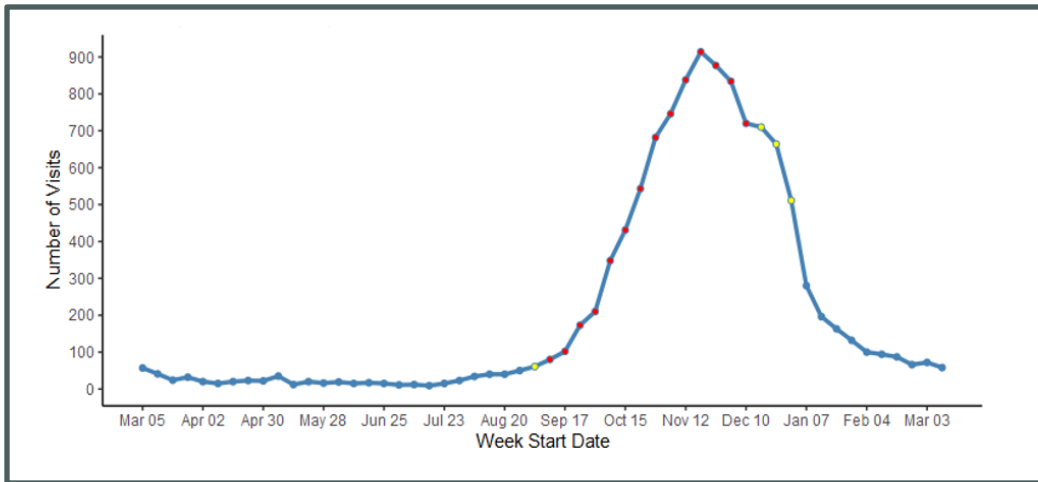
**\*Diagnosed Respiratory Syncytial Virus (RSV)**

03/03– 03/09 (MMWR Week 10)	03/10– 03/16 (MMWR Week 11)
72 visits	<b>58 (-19%)</b>
* RSV - ED and urgent care visits that include RSV in the discharge diagnosis (not necessarily confirmed cases). Percent change is from week prior.	

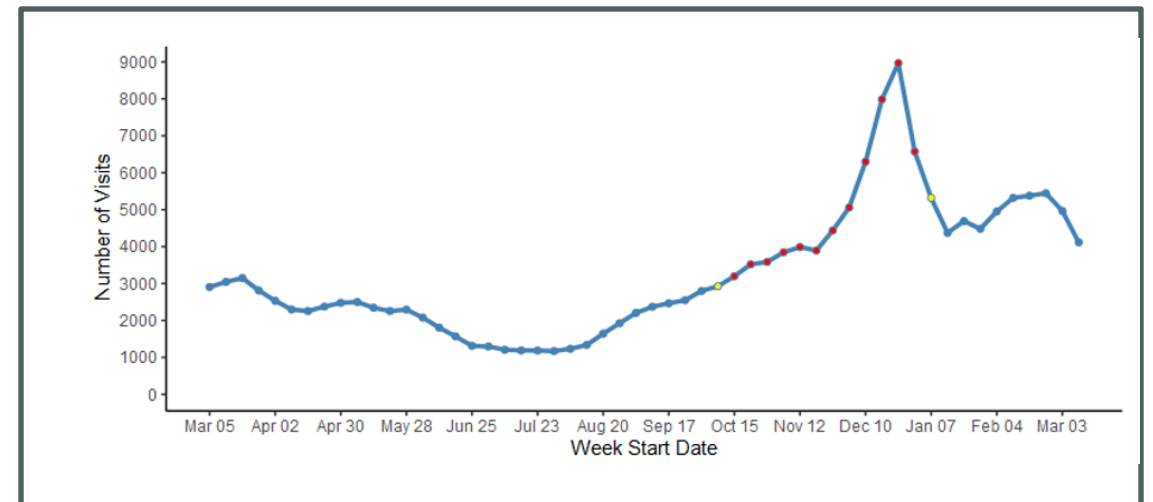
**\*Influenza-Like Illness (Excluding Diagnosed COVID-19) ED and Urgent Care Visits**

03/03– 03/09 (MMWR Week 10)	03/10– 03/16 (MMWR Week 11)
4,965 visits	<b>4,115 (-17%)</b>
* ILI - ED and urgent care visits with a chief complaint of 'flu' or fever + sore throat/cough. <b>Visits with diagnosed COVID-19 are excluded.</b> Percent change is from week prior	

**Weekly ED and Urgent Care Visits with Diagnosed RSV**  
2/26/23 – 3/9/24



**Weekly ED and Urgent Care Visits for ILI Excluding Diagnosed COVID-19**  
2/26/23 – 3/9/24



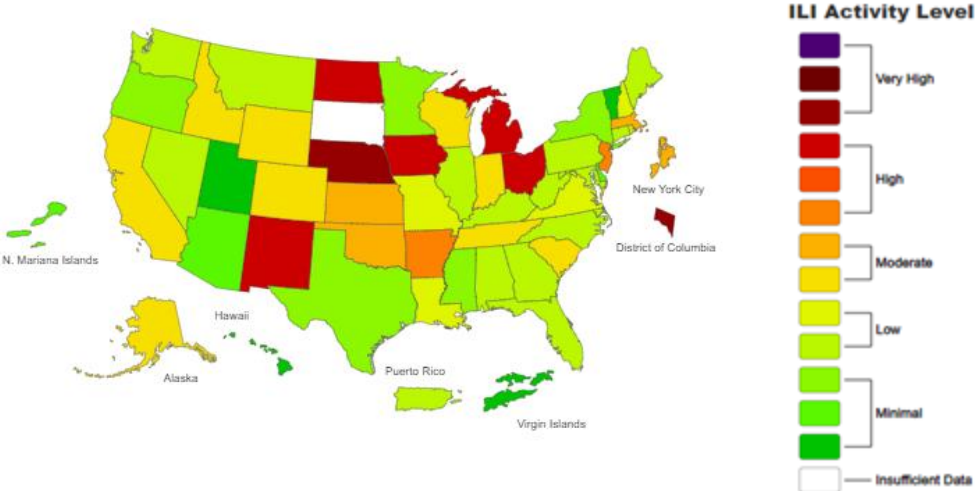
Source: VDH Weekly Respiratory Disease Surveillance Report. Percentage change is calculated off prior week's visits. Data are preliminary and subject to change. RSV Net: [https://www.cdc.gov/rsv/res\\_ea/rsv-net/dashboard.html](https://www.cdc.gov/rsv/res_ea/rsv-net/dashboard.html)

# Virginia: Respiratory Disease Situation Summary

## National View

For Week ending March 16:

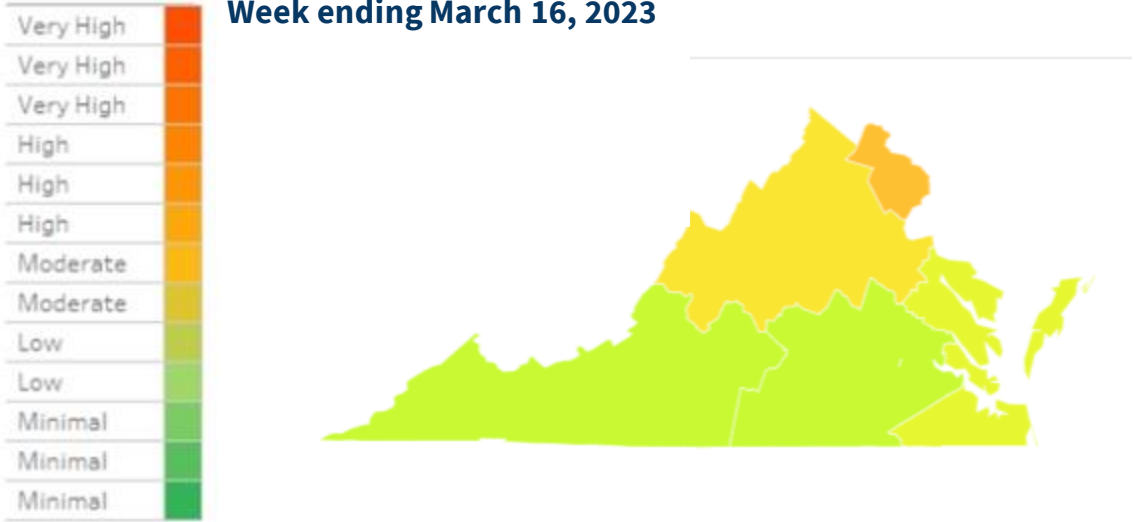
- Seasonal influenza activity is elevated and continues to increase in most parts of the country.
  - Cumulative hospitalization rate is 70.2 per 100k
  - Seasonal influenza activity remains elevated but is decreasing nationally. Activity is decreasing or stable in nine of the 10 HHS regions; however, the Pacific Northwest reported a slight increase this week.



Source: [CDC Fluview \(10/21\)](#)

## ILI Activity Level by Region

Week ending March 16, 2023



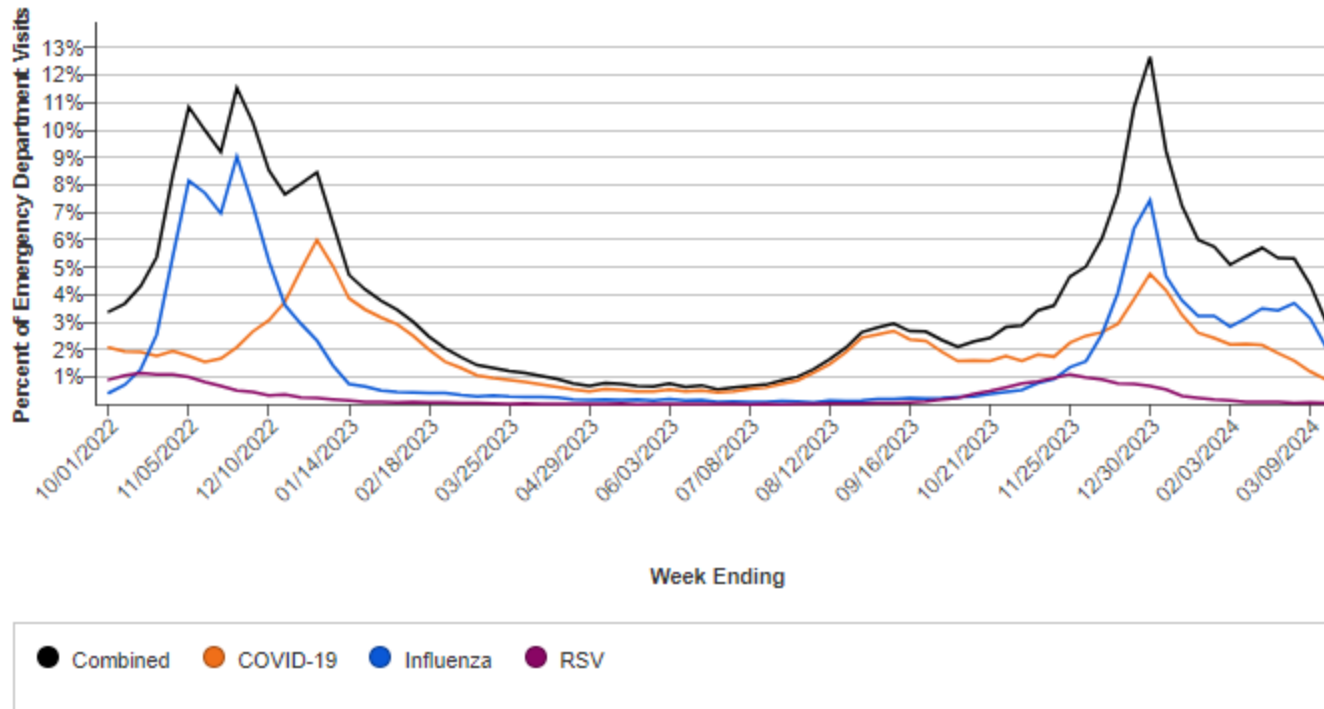
## Virginia View

- For the week ending March 16, 2024; Virginia has **low** ILI activity
  - 3 regions are at low ILI activity levels, and 2 region are at moderate ILI activity level.
  - VA investigated 107 influenza outbreaks during the 2023-2024 season
  - VA reported 2 influenza associated pediatric death for the 2023-2024 season
- VDH is sharing information with key stakeholders and the public:
  - [External flu dashboard](#) updated every Thursday
  - Respiratory Disease Report posted externally and shared every Friday (email) [flu@vdh.virginia.gov](mailto:flu@vdh.virginia.gov) to request the report.

Source: [VDH Weekly Influenza Activity Report](#), [Weekly U.S. Influenza Surveillance Report](#)

# ED Visits for Viral Respiratory Illness, VA

Emergency Department Visits for Viral Respiratory Illness, Virginia



**Week Ending: 03/16/2024**

Combined: 3.0%  
 COVID-19: 0.9%  
 Influenza: 2.1%  
 RSV: 0.1%

Data presented through: 03/16/2024; Data as of: 03/20/2024

**Virginia Data: Week ending March 16, MMWR week 11:**

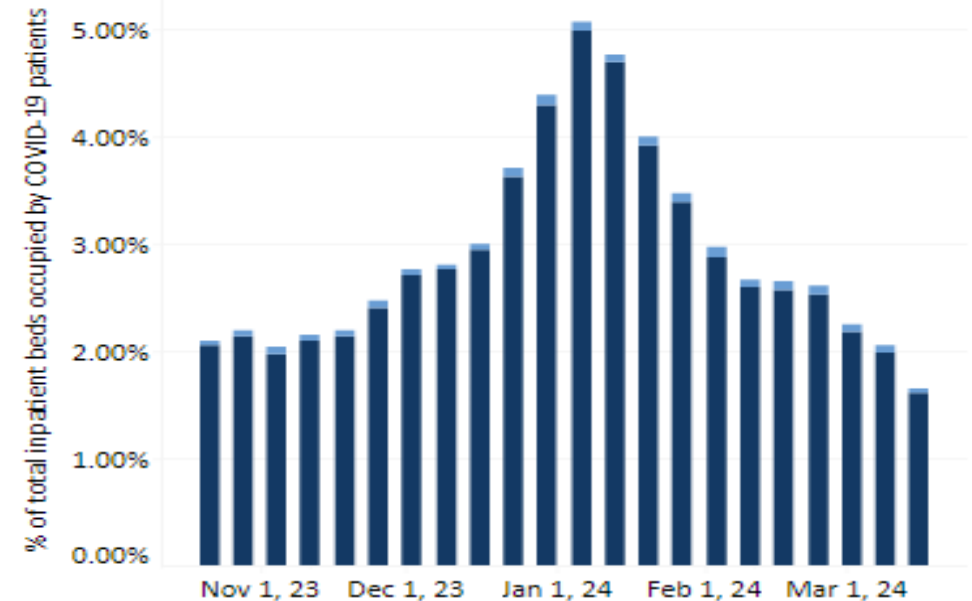
- **.82%** of ED visits were for diagnosed COVID-19 (**28.7% decrease** from previous week)
- **1.65%** of inpatient beds in use for COVID-19 (**19.5% decrease** from previous week)
- **3.12** Hospital Admissions per 100,000 population (**38.8 decrease** from previous week)

% Beds Occupied by Patients with COVID-19 is **Minimal** ↗

**Weekly Percent of Emergency Department Visits for Diagnosed COVID-19 in Virginia, October 2023 – March 2024**



**COVID-19 Hospital Beds in Use for COVID-19 Virginia, October 2023 – March 2024**



Minimal(<2.0%) Low(2.0% - 3.9%) Moderate(4.0% - 5.9%) Substantial(6.0% - 7.9%) High(>=8.0%)

■ Pediatric  
■ Adult

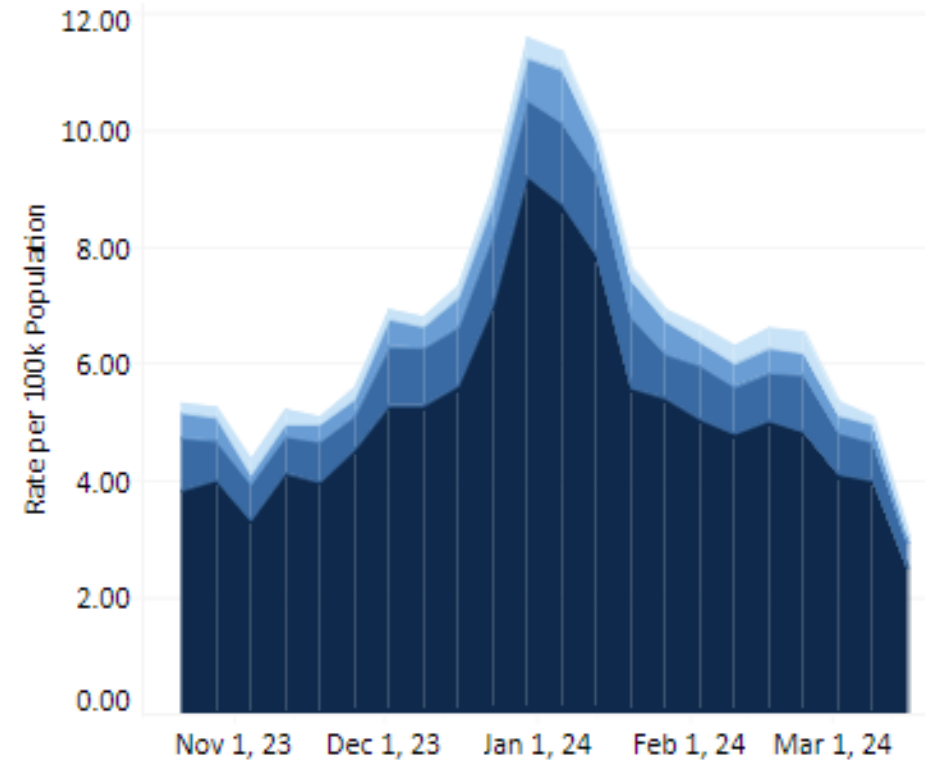
\*Source: [CDC COVID Data Tracker](#), [VDH COVID-19 Dashboard](#)

VDH Weekly Respiratory Disease Surveillance Report. Percentage change is calculated off updated case numbers from week prior.

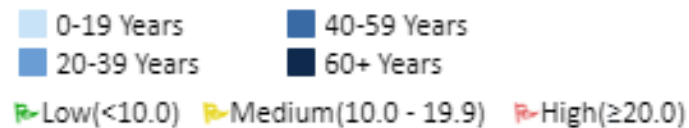
\*Data comparisons: Wednesday-Wednesday

**Virginia's COVID-19 Hospital Admissions for the week ending March 16, 2024:**

- 3.12 Hospital Admissions per 100,000 population (**decreased 38.8%** from previous week)



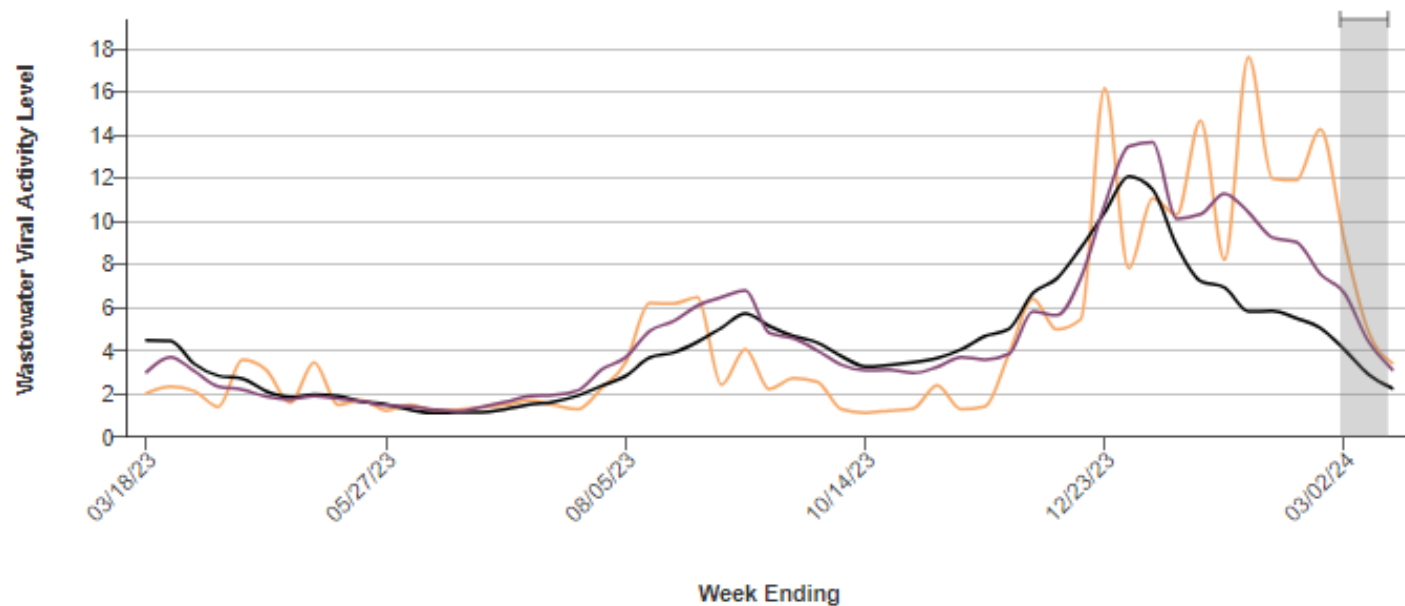
New COVID-19 Hospital Admissions are **Low** ↗



## COVID-19 Wastewater Surveillance –

State:  Date Period:

Virginia has 35 site(s) reporting in the past week, and 3 (9%) of its site(s) with less than six months of data. Sites with less than six months of data will tend to have larger week-to-week changes in Wastewater Viral Activity Level than those with more than six months of data.



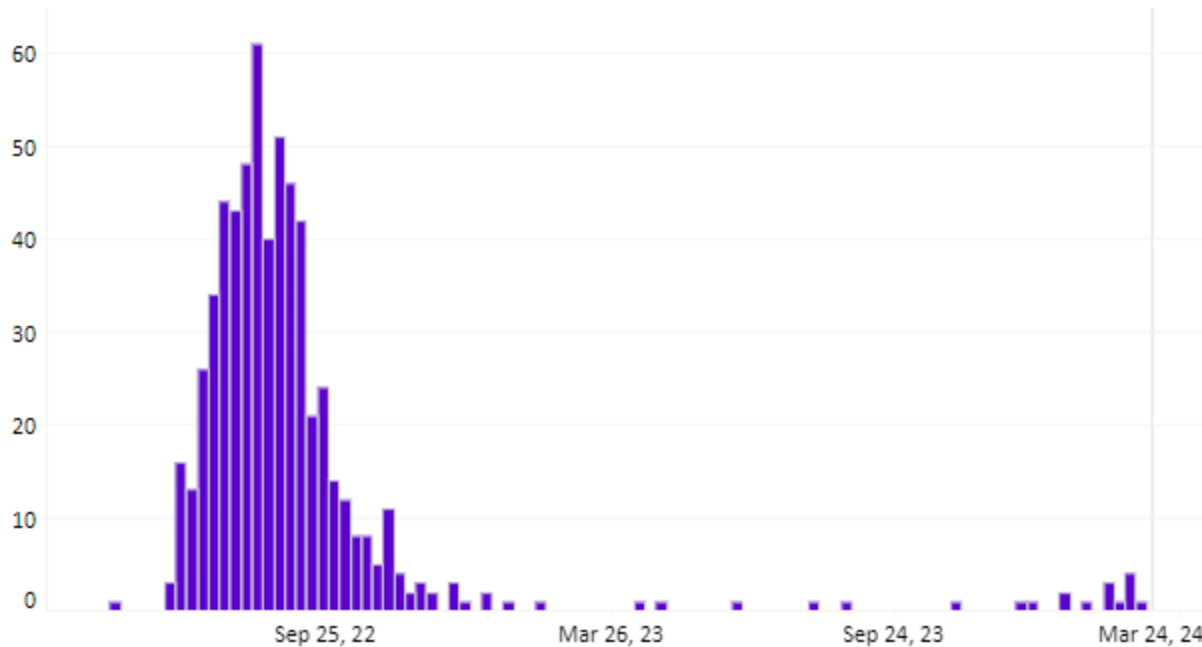
**Week Ending: 03/16/24**

Selected State: 3  
National: 2  
Region: 3

Select a geography to add or remove it from the visualization.

Selected State  National  Region

### Mpox Cases in Virginia, Epi Curve (5/2022 – 3/2024)



<https://www.vdh.virginia.gov/monkeypox/data-in-virginia/>

<b>Total Cases</b>	<b>590</b>
<b>Hospitalizations</b>	<b>35</b>
<b>Deaths</b>	<b>2</b>

### Mpox Cases By Age and Sex (as of 3/2024)

Age Group	Cases
0-9 Years	0 (0.0%)
10-14 Years	1 (0.2%)
15-19 Years	16 (2.7%)
20-29 Years	211 (35.8%)
30-39 Years	236 (40.0%)
40-49 Years	87 (14.7%)
50-59 Years	33 (5.6%)
60-69 Years	4 (0.7%)
70+ Years	2 (0.3%)
Sex	
Female	33 (5.6%)
Male	557 (94.4%)

\*Data represent investigations with notifications submitted in VEDSS.