

RSV/Influenza/COVID/Mpx Updates

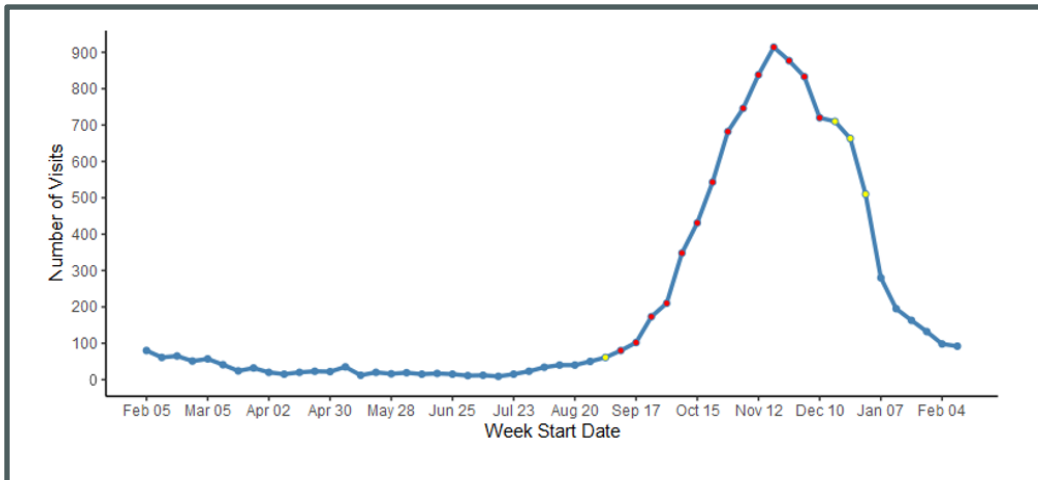
***Diagnosed Respiratory Syncytial Virus (RSV)**

2/4- 2/10 (MMWR Week 6)	2/11- 2/17 (MMWR Week 7)
98 visits	92 (-6%)
* RSV - ED and urgent care visits that include RSV in the discharge diagnosis (not necessarily confirmed cases). Percent change is from week prior.	

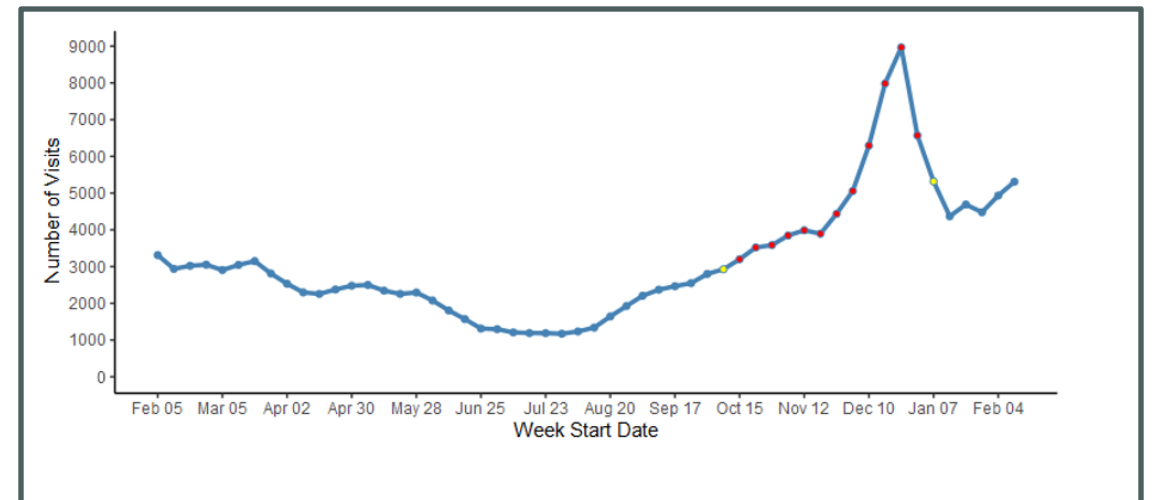
***Influenza-Like Illness (Excluding Diagnosed COVID-19) ED and Urgent Care Visits**

2/4- 2/10 (MMWR Week 6)	2/11- 2/17 (MMWR Week 7)
4,933 visits	5,309(+8%)
* ILI - ED and urgent care visits with a chief complaint of 'flu' or fever + sore throat/cough. Visits with diagnosed COVID-19 are excluded. Percent change is from week prior	

**Weekly ED and Urgent Care Visits with Diagnosed RSV
2/05/23 – 2/17/24**



**Weekly ED and Urgent Care Visits for ILI Excluding Diagnosed COVID-19
2/05/23 – 2/17/24**



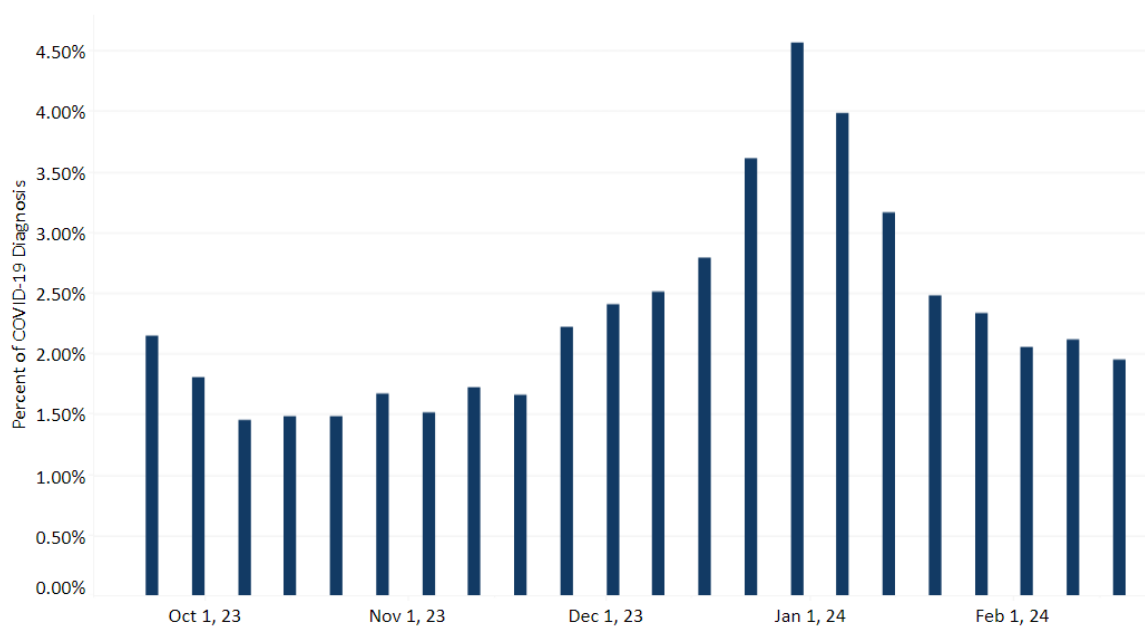
Source: VDH Weekly Respiratory Disease Surveillance Report. Percentage change is calculated off prior week's visits. Data are preliminary and subject to change. RSV Net: <https://www.cdc.gov/rsv/research/rsv-net/dashboard.html>

Virginia Data: Week ending February 17, MMWR week 7:

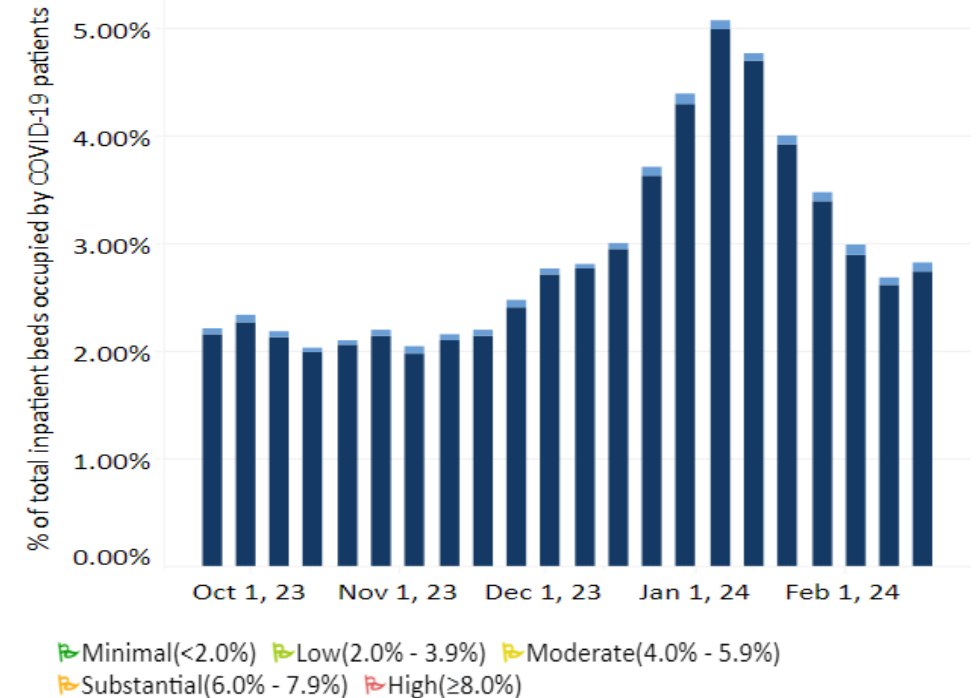
- **1.95%** of ED visits were for diagnosed COVID-19 (**7.6% decrease** from previous week)
- **2.82%** of inpatient beds in use for COVID-19 (**5.2% increase** from previous week)
- **6.49** Hospital Admissions per 100,000 population (remained stable (<5%) from previous week)

% Beds Occupied by Patients with COVID-19 is **Low** ↗

Weekly Percent of Emergency Department Visits for Diagnosed COVID-19 in Virginia, September 2023 – February 2024



COVID-19 Hospital Beds in Use for COVID-19 Virginia, September 2023 – February 2024

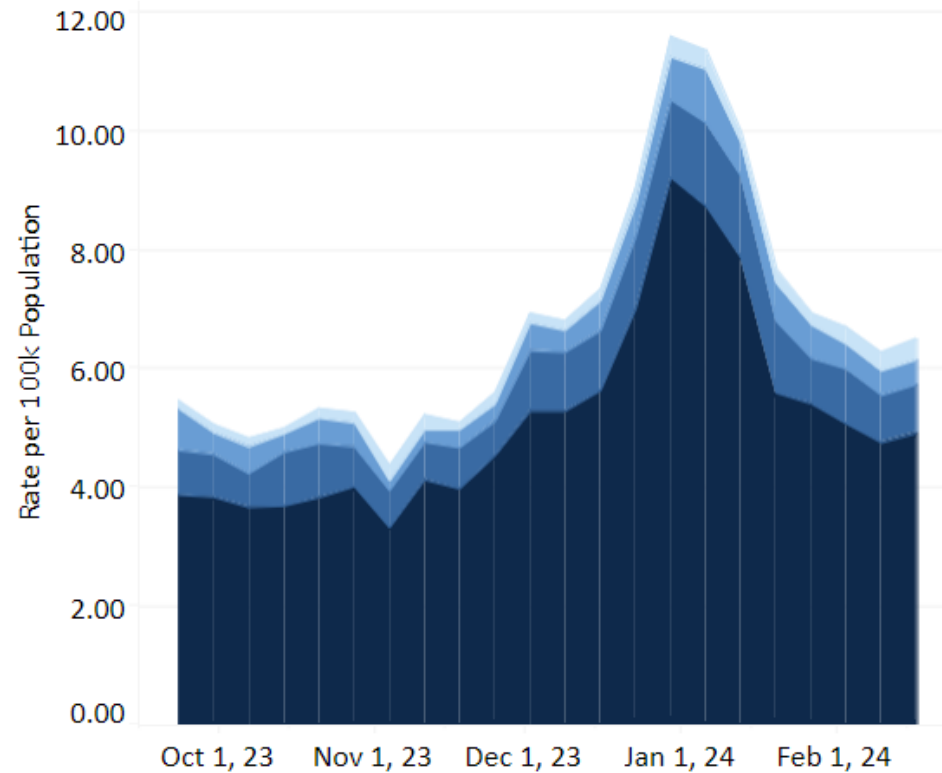


■ Pediatric
■ Adult

*Source: [CDC COVID Data Tracker](#), [VDH COVID-19 Dashboard](#)
 VDH Weekly Respiratory Disease Surveillance Report. Percentage change is calculated off updated case numbers from week prior.
 *Data comparisons: Wednesday-Wednesday

Virginia's COVID-19 Hospital Admissions for the week ending February 10, 2024:

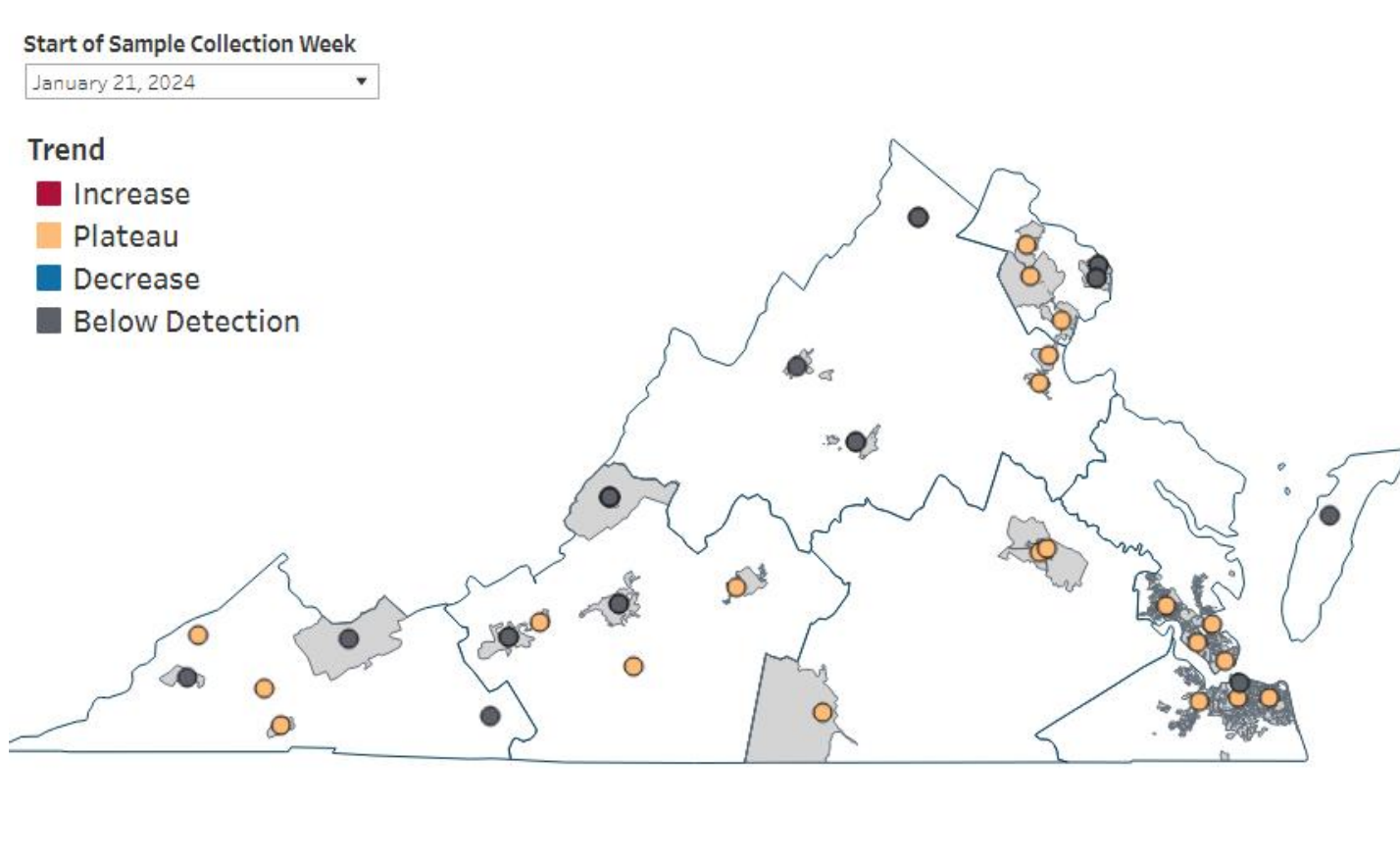
- **6.49** Hospital Admissions per 100,000 population (remained stable (<5%) from previous week)



New COVID-19 Hospital Admissions are **Low** 🚩

🚩 0-19 Years 🚩 40-59 Years
🚩 20-39 Years 🚩 60+ Years
🚩 Low(<10.0) 🚩 Medium(10.0 - 19.9) 🚩 High(≥20.0)

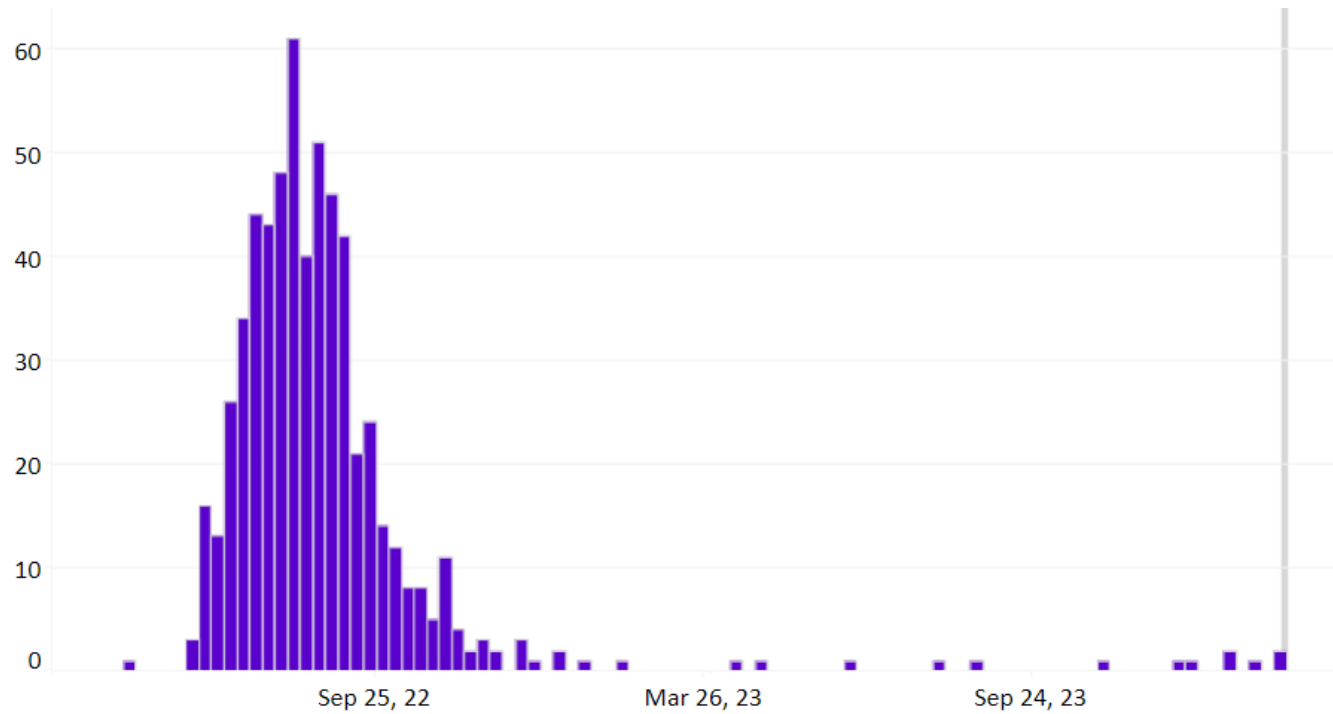
COVID-19 Wastewater Surveillance



- This map of Virginia shows the locations and overall viral load trends of the wastewater collection sites enrolled in the Sentinel Monitoring Program.
- The trend is indicated by the color of the 'dot'. See legend below. Not all sites produce data every week, so there may be gray 'No Trend Available' dots

Source: [VDH Wastewater Dashboard](#)

Mpox Cases in Virginia, Epi Curve (5/2022 – 2/2024)



<https://www.vdh.virginia.gov/monkeypox/data-in-virginia/>

Total Cases	583
Hospitalizations	33
Deaths	2

Mpox Cases By Age and Sex (as of 2/2024)

Age Group	Cases
0-9 Years	0 (0.0%)
10-14 Years	1 (0.2%)
15-19 Years	15 (2.6%)
20-29 Years	209 (35.8%)
30-39 Years	233 (40.0%)
40-49 Years	86 (14.8%)
50-59 Years	33 (5.7%)
60-69 Years	4(0.7%)
70+ Years	2 (0.3%)
Sex	
Female	33 (5.7%)
Male	550 (94.3%)

*Data represent investigations with notifications submitted in VEDSS.