

# RSV/Influenza/COVID/Mpx Updates

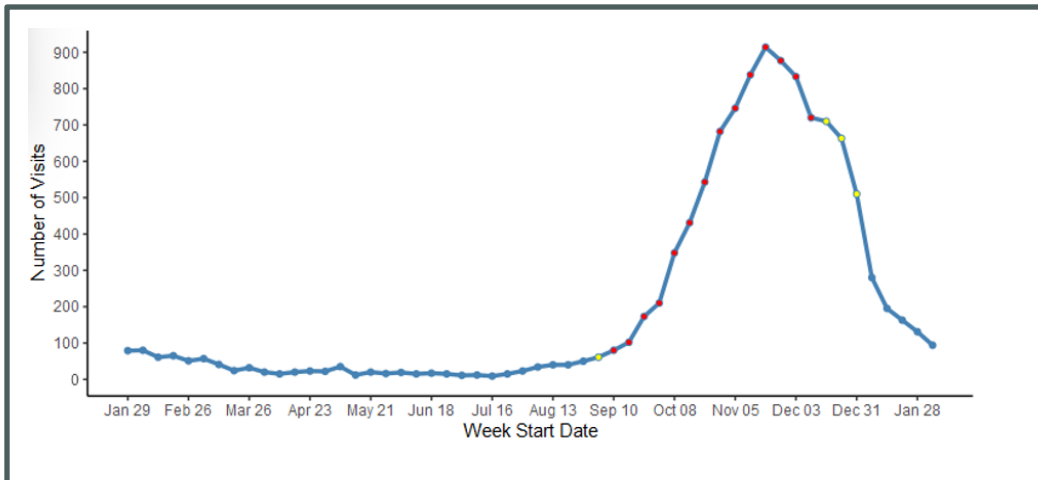
**\*Diagnosed Respiratory Syncytial Virus (RSV)**

1/28– 2/3 (MMWR Week 5)	2/4– 2/10 (MMWR Week 6)
131 visits	<b>94 (-28%)</b>
* RSV - ED and urgent care visits that include RSV in the discharge diagnosis (not necessarily confirmed cases). Percent change is from week prior.	

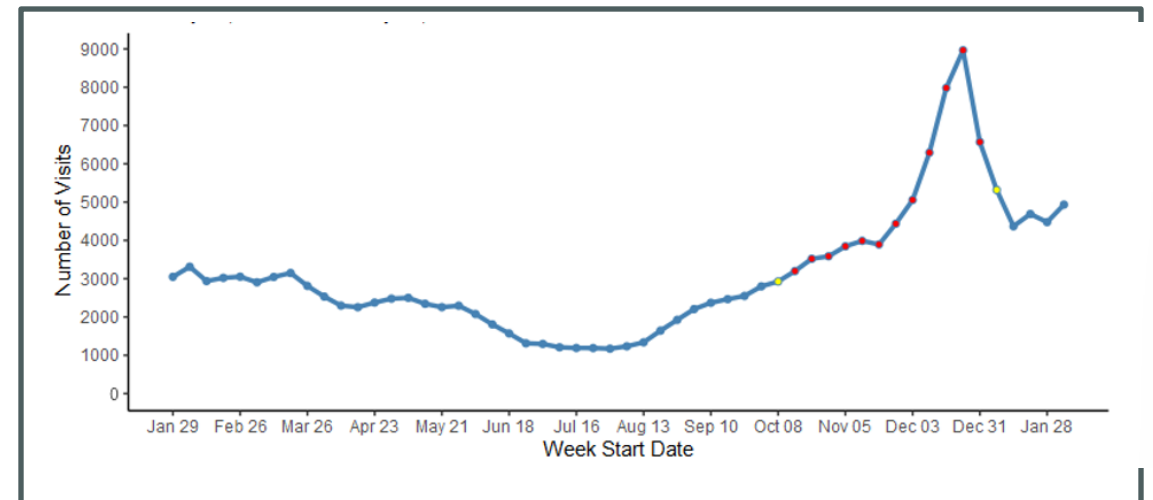
**\*Influenza-Like Illness (Excluding Diagnosed COVID-19) ED and Urgent Care Visits**

1/28– 2/3 (MMWR Week 5)	2/4– 2/10 (MMWR Week 6)
4,477 visits	<b>4,934 (+10%)</b>
* ILI - ED and urgent care visits with a chief complaint of 'flu' or fever + sore throat/cough. <b>Visits with diagnosed COVID-19 are excluded.</b> Percent change is from week prior	

**Weekly ED and Urgent Care Visits with Diagnosed RSV  
1/28/23 – 2/10/24**



**Weekly ED and Urgent Care Visits for ILI Excluding Diagnosed COVID-19  
1/29/23 – 2/10/24**



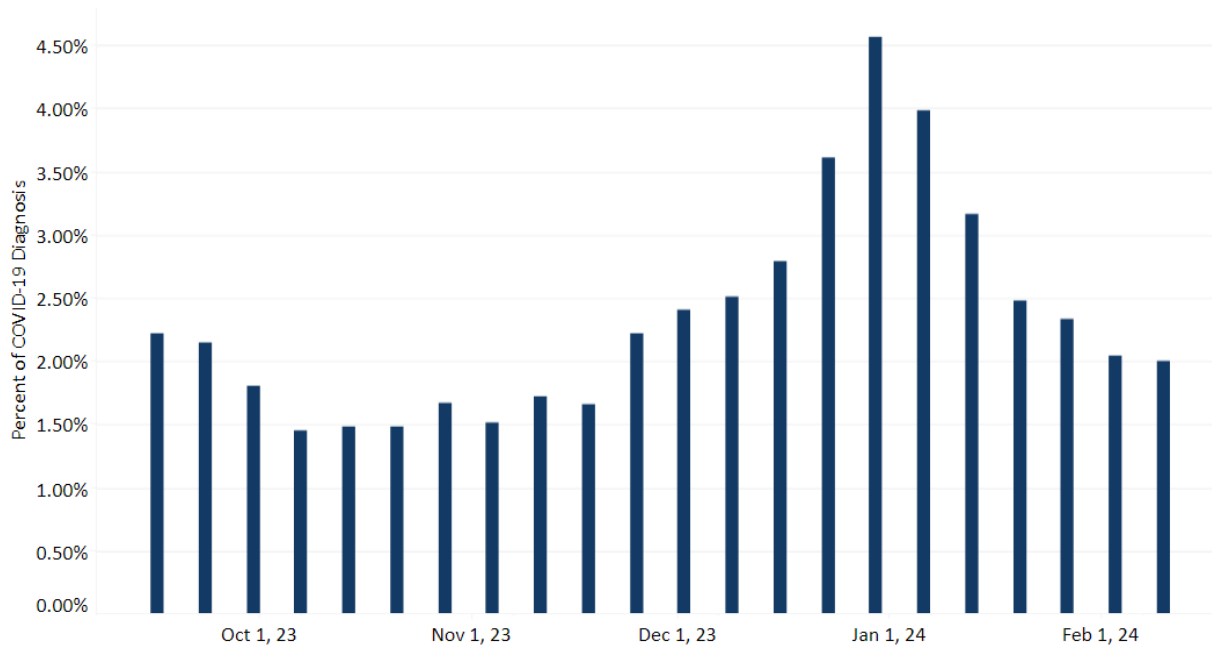
Source: VDH Weekly Respiratory Disease Surveillance Report. Percentage change is calculated off prior week's visits. Data are preliminary and subject to change. RSV Net: <https://www.cdc.gov/rsv/research/rsv-net/dashboard.html>

**Virginia Data: Week ending February 10, MMWR week 6:**

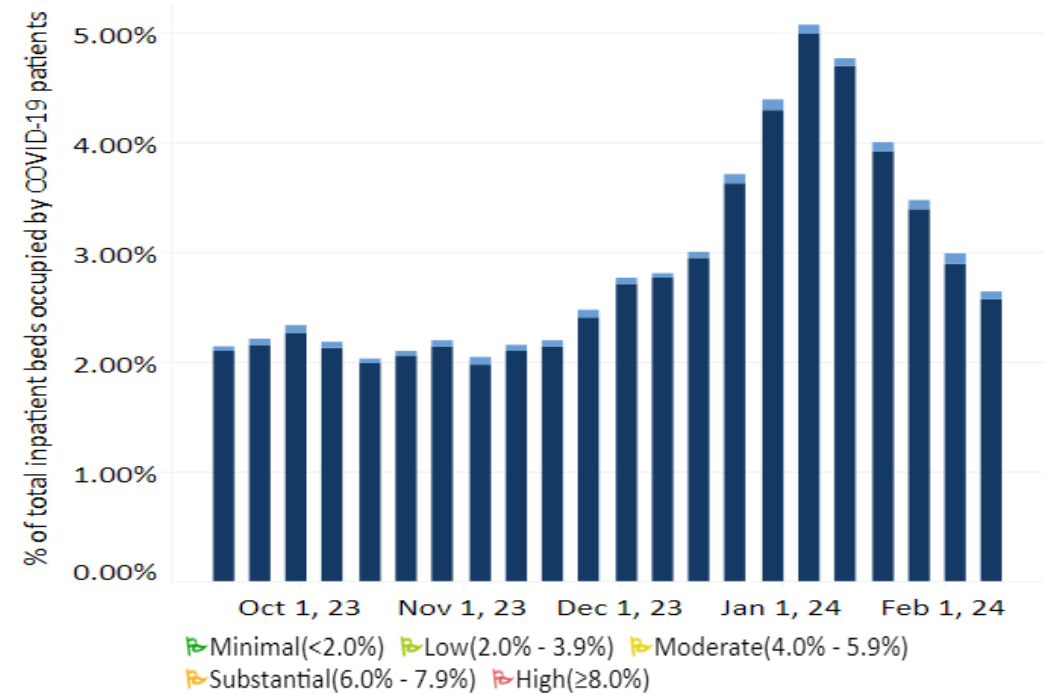
- **2.00%** of ED visits were for diagnosed COVID-19 (remained stable <5% from previous week)
- **2.65%** of inpatient beds in use for COVID-19 (**11.4% decrease** from previous week)

% Beds Occupied by Patients with COVID-19 is **Low** ↘

**Weekly Percent of Emergency Department Visits for Diagnosed COVID-19 in Virginia, September 2023 – February 2024**



**COVID-19 Hospital Beds in Use for COVID-19 Virginia, September 2023 – February 2024**



■ Pediatric  
■ Adult

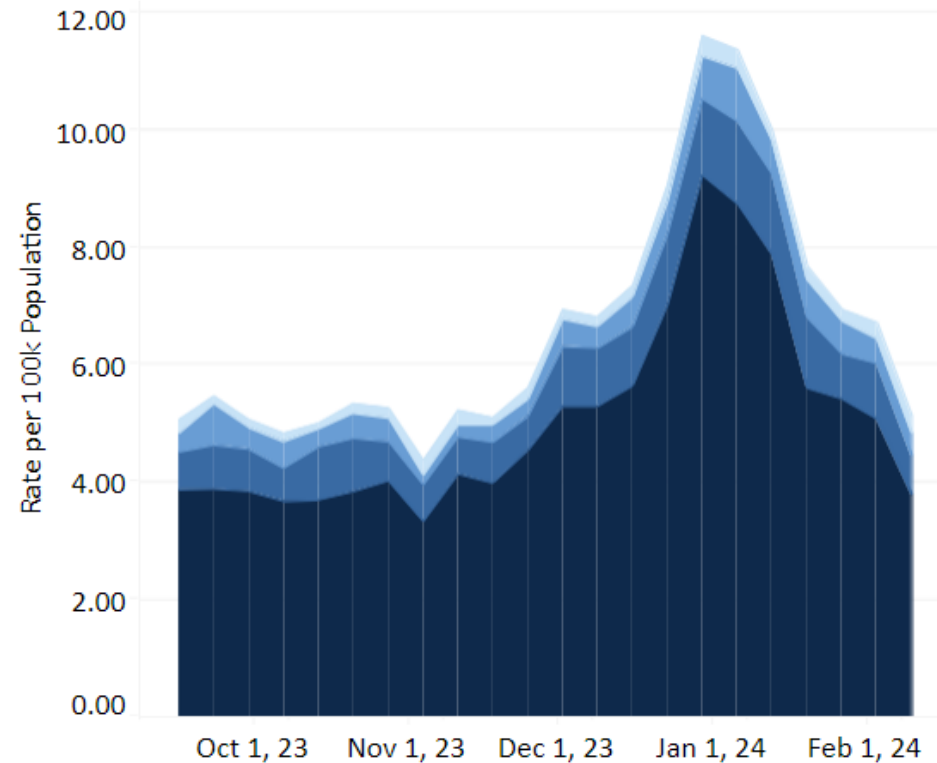
\*Source: [CDC COVID Data Tracker](#), [VDH COVID-19 Dashboard](#)

VDH Weekly Respiratory Disease Surveillance Report. Percentage change is calculated off updated case numbers from week prior.

\*Data comparisons: Wednesday-Wednesday

**Virginia's COVID-19 Hospital Admissions for the week ending February 10, 2024:**

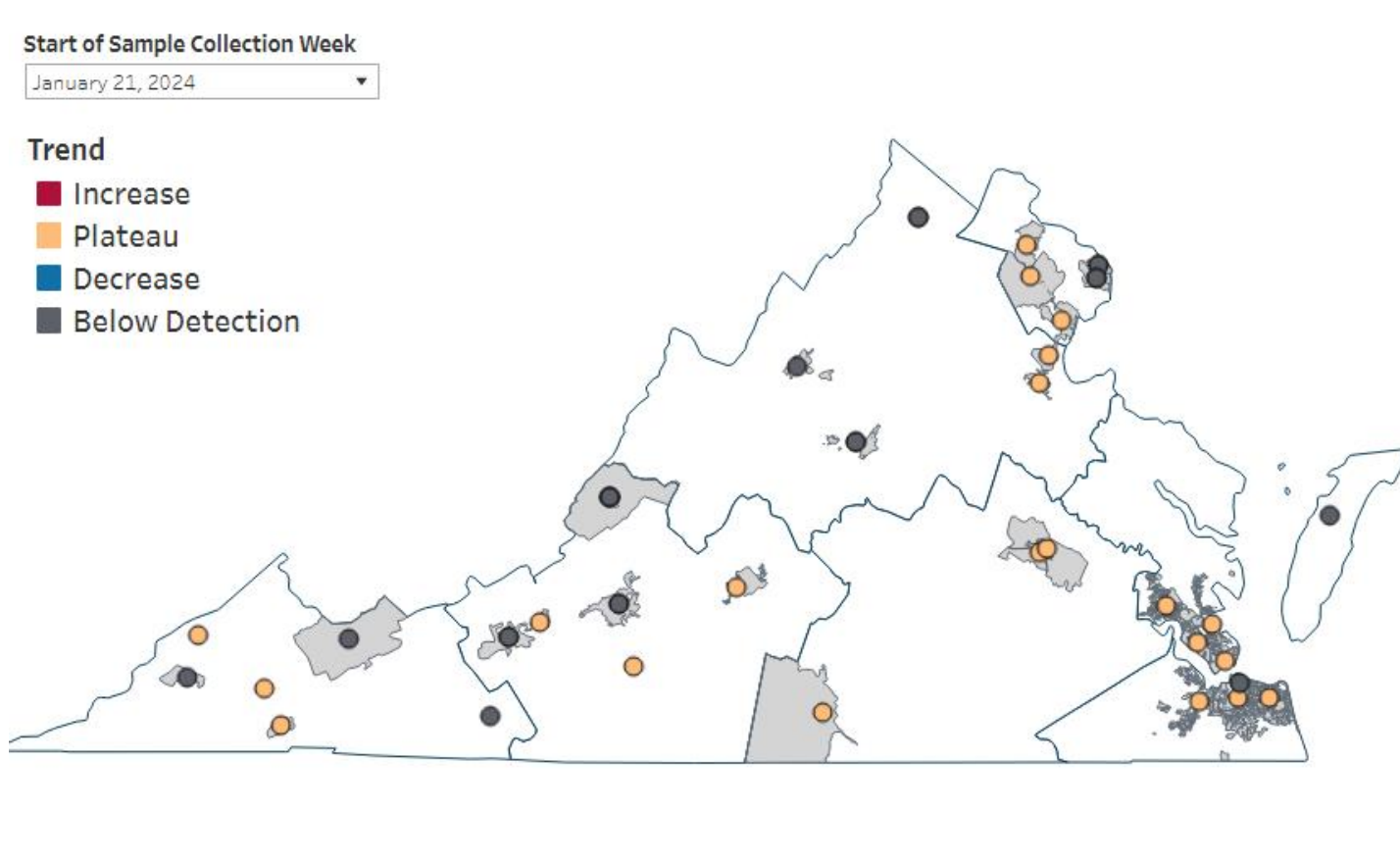
- **5.12** Hospital Admissions per 100,000 population
  - **Decreased 23.7%** from previous week



New COVID-19 Hospital Admissions are **Low** 🟢

▢ 0-19 Years      ▢ 40-59 Years  
▢ 20-39 Years      ▢ 60+ Years  
🟢 Low(<10.0)    🟡 Medium(10.0 - 19.9)    🔴 High(≥20.0)

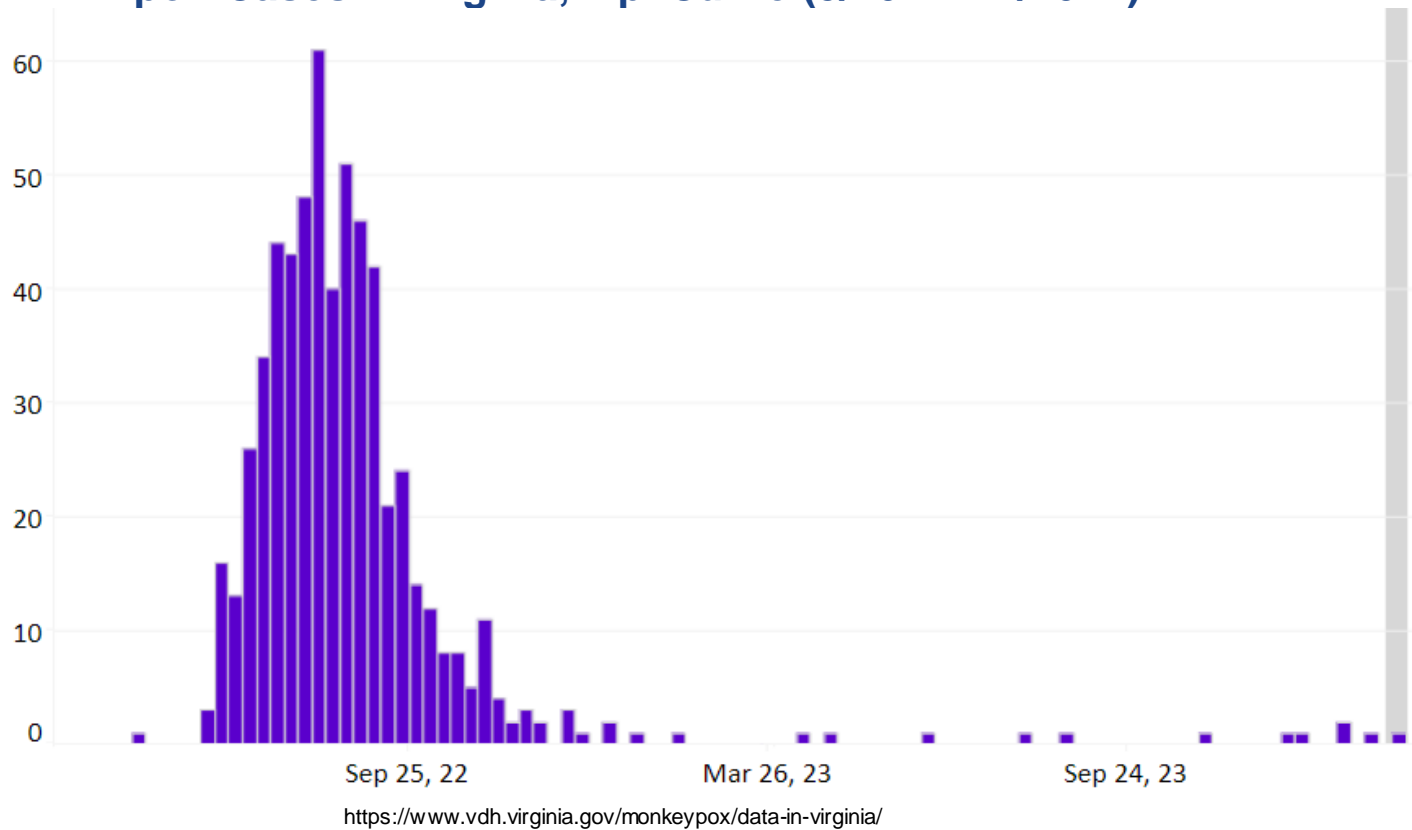
## COVID-19 Wastewater Surveillance



- This map of Virginia shows the locations and overall viral load trends of the wastewater collection sites enrolled in the Sentinel Monitoring Program.
- The trend is indicated by the color of the 'dot'. See legend below. Not all sites produce data every week, so there may be gray 'No Trend Available' dots

Source: [VDH Wastewater Dashboard](#)

### Mpox Cases in Virginia, Epi Curve (5/2022 – 2/2024)



<b>Total Cases</b>	<b>582</b>
<b>Hospitalizations</b>	<b>32</b>
<b>Deaths</b>	<b>2</b>

### Mpox Cases By Age and Sex (as of 2/2024)

Age Group	Cases
0-9 Years	0 (0.0%)
10-14 Years	1 (0.2%)
15-19 Years	15 (2.6%)
20-29 Years	209 (35.9%)
30-39 Years	232 (39.9%)
40-49 Years	86 (14.8%)
50-59 Years	33 (5.7%)
60-69 Years	4(0.7%)
70+ Years	2 (0.3%)
Sex	
Female	33 (5.7%)
Male	549 (94.3%)

\*Data represent investigations with notifications submitted in VEDSS.