



# **An Introduction to the Economic Development Administration (EDA)**

# EDA's Mission

*To lead the federal economic development agenda by promoting innovation and competitiveness, preparing American regions for growth and success in the worldwide economy.*

- Increase America's global ECONOMIC COMPETITIVENESS
- Support COMMUNITY-LED ECONOMIC DEVELOPMENT
- Help communities develop RESILIENT AND AGILE local economies





US Department of Commerce  
Economic Development Administration

## EDA Regions



**Seattle:**  
 American Samoa  
 Guam  
 Federated States of  
 Micronesia  
 Palau  
 Marshall Islands  
 Commonwealth of  
 the Northern  
 Mariana Islands

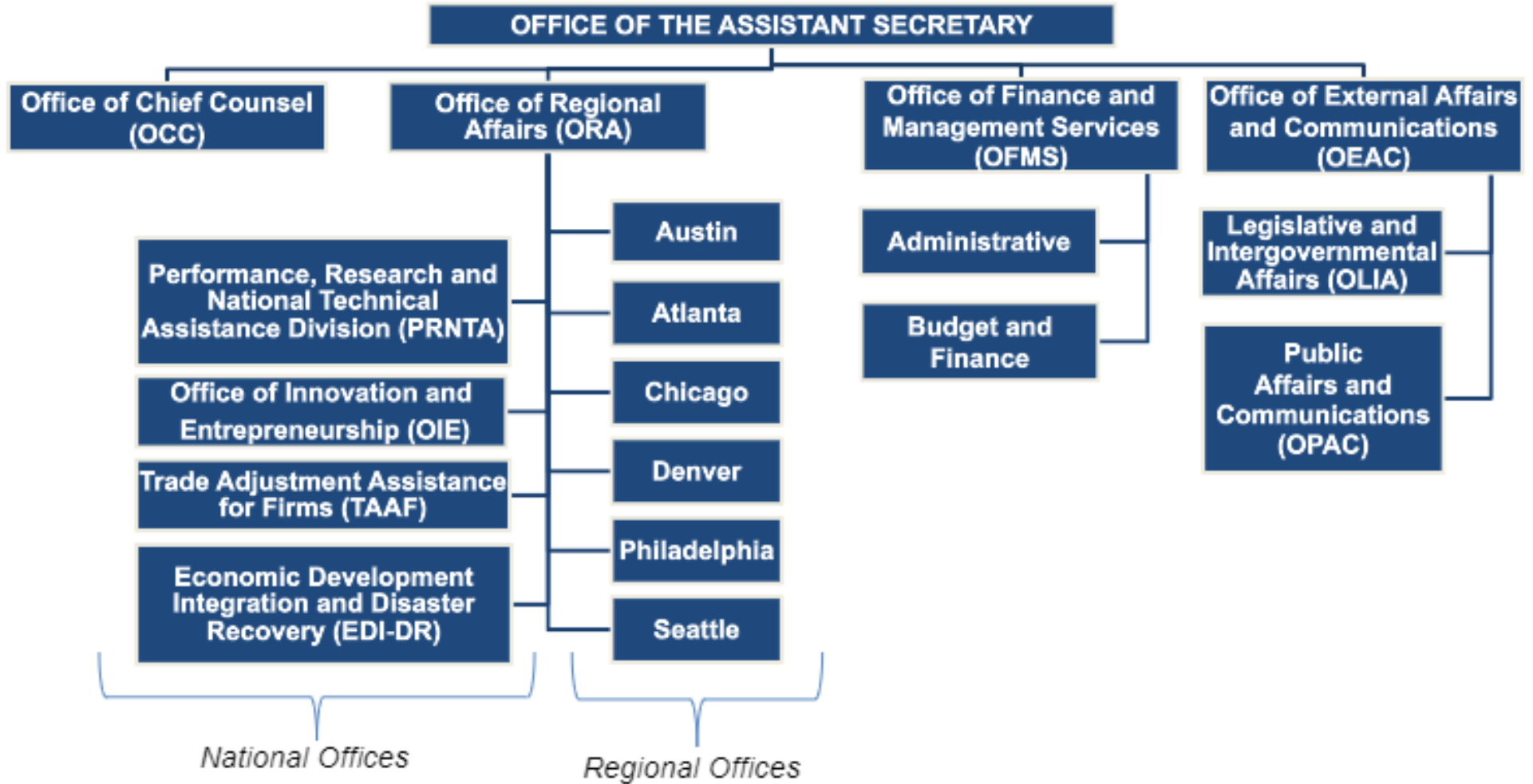


EDA Regional Offices/University Centers

Atlanta Austin Chicago Denver Philadelphia Seattle

**Philadelphia:**  
 Puerto Rico and US  
 Virgin Islands

# EDA's Office Structure



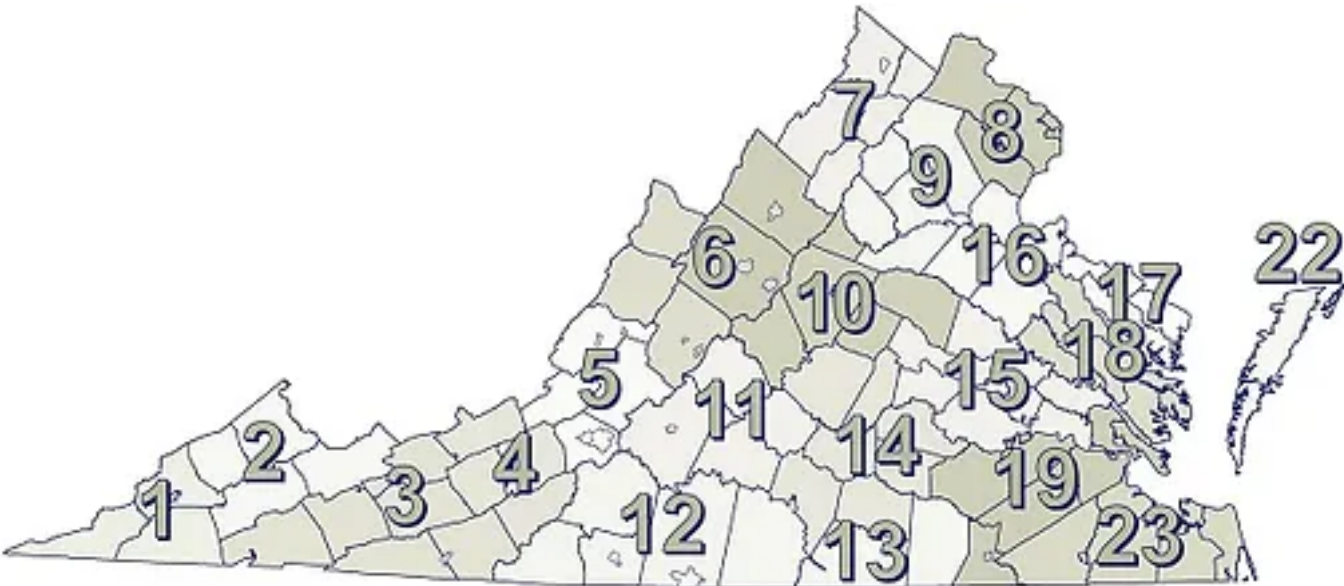
# EDDs and CEDS

- **Economic Development Districts (EDDs)** are multi-jurisdictional entities, commonly composed of multiple counties and in certain cases even cross-state borders. They help lead the locally-based, regionally driven economic development planning process that leverages the involvement of the public, private and non-profit sectors to establish a strategic blueprint (i.e., an economic development roadmap) for regional collaboration.
- The strategic blueprint, known as a **Comprehensive Economic Development Strategy (CEDS)**, is a strategy-driven plan for regional economic development. A CEDS is the result of a “regionally-owned” planning process designed to guide the economic prosperity and resiliency of an area or region. It provides a coordinating mechanism for individuals, organizations, local governments, and private industry to engage in a meaningful conversation and debate about the economic direction of their region.



# EDA in Virginia

FY20-24 total EDA awards of approximately \$174 million in Virginia



## 13 Economic Development Districts

1. LENOWISCO PDC
  2. Cumberland Plateau PDC
  3. Mount Rogers PDC
  4. New River Valley RC
  5. Roanoke Valley-Alleghany RC
  6. Central Shenandoah PDC
  7. Northern Shenandoah Valley RC
  8. Northern Virginia RC
  9. Rappahannock-Rapidan RC\*
  10. Thomas Jefferson PDC\*
  11. Central Virginia PDC\*
  12. West Piedmont PDC
  13. Southside PDC
  14. Commonwealth RC
  15. Plan RVA\*
  16. George Washington RC\*
  17. Northern Neck PDC
  18. Middle Peninsula PDC\*
  19. Crater PDC
  22. Accomack-Northampton PDC
  23. Hampton Roads PDC\*
- \* Have a CEDS or completing a CEDS



# Eligible Entities

- District Organization;
- Indian Tribe or a consortium of Indian Tribes;
- State, county, city, or other political subdivision of a State, including a special purpose unit of a State or local government engaged in economic or infrastructure development activities, or a consortium of political subdivisions;
- Institution of higher education or a consortium of institutions of higher education; or
- Public or private non-profit organization or association acting in cooperation with officials of a political subdivision of a State.



# Non-Profit Organization Requirements

- Nonprofit organizations, including unions, must submit documentation that demonstrates their status as nonprofit organizations:
  - Articles of incorporation,
  - Bylaws, and
  - Certificate of good standing, or equivalent.
- Must be acting in cooperation with officials of a political subdivision of a State.
- Must have a Unique Entity Identifier (UEI) number
- Must have an active registration on the System for Award Management, SAM.gov





# EDA's Investment Priorities



**Equity**



**Recovery & Resilience**



**Workforce Development**



**Manufacturing**



**Technology-Based Economic Development**



**Environmentally-Sustainable Development**



**Exports & Foreign Direct Investment**

To learn more about EDA's Investment Priorities, visit: <https://eda.gov/about/investment-priorities/>



# EDA's Program Portfolio


Assistance to Coal Communities (ACC) funds are EAA funds



**Economic Adjustment Assistance (EAA)**



**Public Works**



**Planning**



**Technical Assistance**



**Research and Evaluation**



**Trade Adjustment Assistance for Firms (TAAF)**



**Innovation and Entrepreneurship**



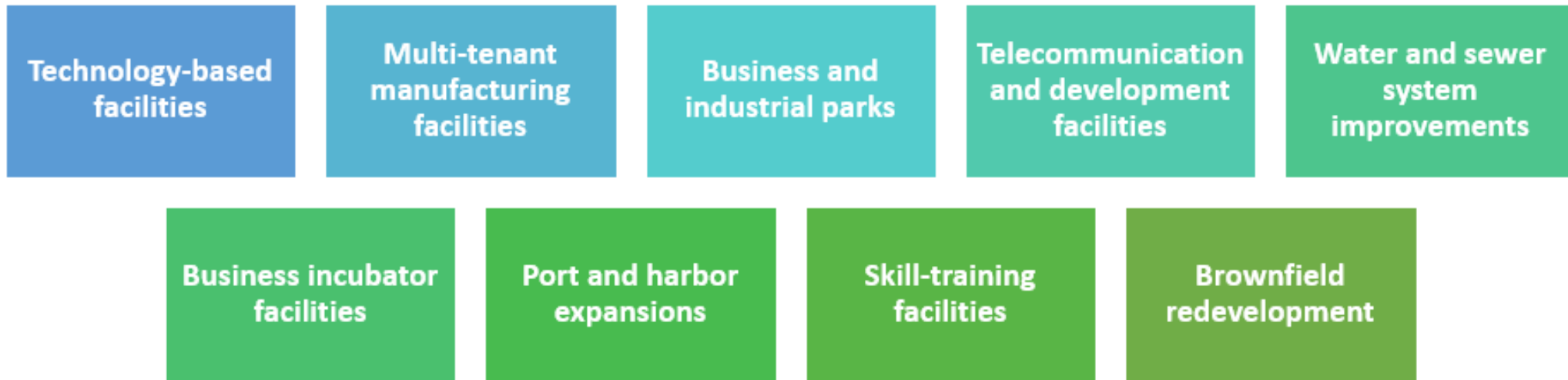
**Revolving Loan Funds (RLF)  
Part of EAA**



# Public Works Funding

EDA's Public Works program helps distressed communities revitalize, expand, and upgrade their physical infrastructure.

Public Works program investments help facilitate the transition of communities from being distressed to becoming competitive by developing key public infrastructure, such as:



**MATCH:** Range from 50% to 80% depending on PCI, unemployment, special need.



# Economic Adjustment Assistance Funding

The Economic Adjustment Assistance (EAA) program is EDA's most flexible program; it provides a wide range of technical, planning, and public works and infrastructure assistance in regions experiencing adverse economic changes that may occur suddenly or over time.

The EAA program can assist eligible entities in responding to a wide range of economic challenges through:

Strategy or Implementation Grants to support the execution of activities such as infrastructure improvements or non-construction elements like feasibility studies, industry studies, or preliminary engineering and environmental site work.

**MATCH: Range from 50% to 80% depending on PCI, unemployment, special need.**

**ACC= 80%**



# Recent EDA Investments in Virginia

- **City of Newport News: Economic Adjustment Assistance (EAA)**

Preliminary Studies and Design for the Seafood Industrial Park

- **LENOWISCO PDC: EAA Assistance to Coal Communities**

Supply chain analysis and development of Regional SMR Manufacturing Supply Chain Report.

- **Mountain Gateway Community College: EAA Assistance to Coal Communities**

Building Renovation to house a manufacturing training center, to deliver training and award industry credentials in the areas of advanced manufacturing, machining, welding, HVAC, and diesel mechanics.

- **New River Regional Water Authority: Public Works**

Expansion of water treatment facility to support industry.

- **SOVA Innovation Hub: Public Works**

Building Renovation to create a digital maker space and co-working offices.



# How to Apply

- Read EDA's Public Works and Economic Adjustment Assistance Notice of Funding Opportunity (PWEAA NOFO)
- Contact me or your EDD
- Register for EDGE
- Fill out application forms in EDGE and submit
- Review period starts



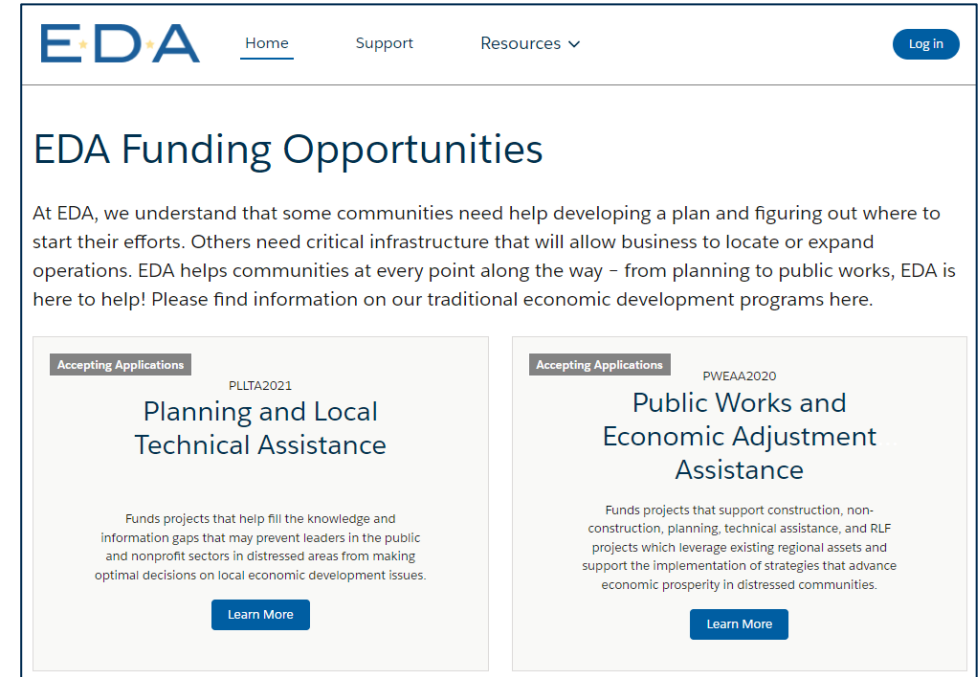
# Access and Register for the EDGE Portal

<https://sfgrants.eda.gov/>

- Explore the EDGE Portal

Use Microsoft Edge, Google Chrome or Firefox

- Do not use Internet Explorer
- Allow pop-ups
- Register for a New Portal Account
  - Self-Register to use the EDGE Portal
  - Know your UEI and/or CAGE Code



The screenshot shows the EDA website's 'Funding Opportunities' page. At the top, there is a navigation bar with the EDA logo, 'Home', 'Support', 'Resources', and a 'Log in' button. The main heading is 'EDA Funding Opportunities'. Below this, a paragraph explains that EDA helps communities at every point along the way, from planning to public works. Two featured funding opportunities are displayed in a grid:

- Planning and Local Technical Assistance (PLTA2021)**: Funds projects that help fill the knowledge and information gaps that may prevent leaders in the public and nonprofit sectors in distressed areas from making optimal decisions on local economic development issues. A 'Learn More' button is present.
- Public Works and Economic Adjustment Assistance (PWEAA2020)**: Funds projects that support construction, non-construction, planning, technical assistance, and RLF projects which leverage existing regional assets and support the implementation of strategies that advance economic prosperity in distressed communities. A 'Learn More' button is present.



# EDA Funding Opportunities

At EDA, we understand that some communities need help developing a plan and figuring out where to start their efforts. Others need critical infrastructure that will allow business to locate or expand operations. EDA helps communities at every point along the way – from planning to public works, EDA is here to help! Please find information on our traditional economic development programs here.

Accepting Applications

1

## FY 2021 - 2023 Economic Development RNTA

Provide investments that support research and technical assistance projects under EDA's R&E and NTA programs.

[Learn More](#)

Accepting Applications

FY2023PWEDA

## Planning and Local TA

Can fund public owned facilities and publicly owned infrastructure that supports creation/retention of jobs and private investment

[Learn More](#)

Accepting Applications

PWEAA2020

## Public Works and Economic Adjustment Assistance

Funds projects that support construction, non-construction, planning, technical assistance, and RLF projects which leverage existing regional assets and support the implementation of strategies that advance economic prosperity in distressed communities.

[Learn More](#)



## Documents

Welcome to the EDGE Document Section. Please select the applicable EDGE Documents.

### Quick Reference Guides

01 EDA EDGE Portal Cheat Sheet

02 What is included in the EDGE Portal Process - Process Diagrams and Outlines

03 How do I Access the EDGE Portal

04 How do I update my Organization in the EDGE Portal

05 How do I Apply for Funding Opportunities in the EDGE Portal

06 How do I Create my Application Team with AOR in the EDGE Portal

07 How do I Apply as an Economic Development District (EDD) in the EDGE Portal

08 How do I Add a 3rd Party Consultant in the EDGE Portal

09 How do I Respond to Curing in the EDGE Portal

Questions:

[grantHDsupport@eda.gov](mailto:grantHDsupport@eda.gov) or  
support tab in EDGE.

# Resources

Visit our website for resources: [www.eda.gov](http://www.eda.gov)

- One-page overviews
- NOFO webinars
- FAQs
- Applicant support tools



# Thank you!

**Lauren Stuhldreher**  
**Economic Development Representative**  
**215-764-0427**  
**[lstuhldreher@eda.gov](mailto:lstuhldreher@eda.gov)**

