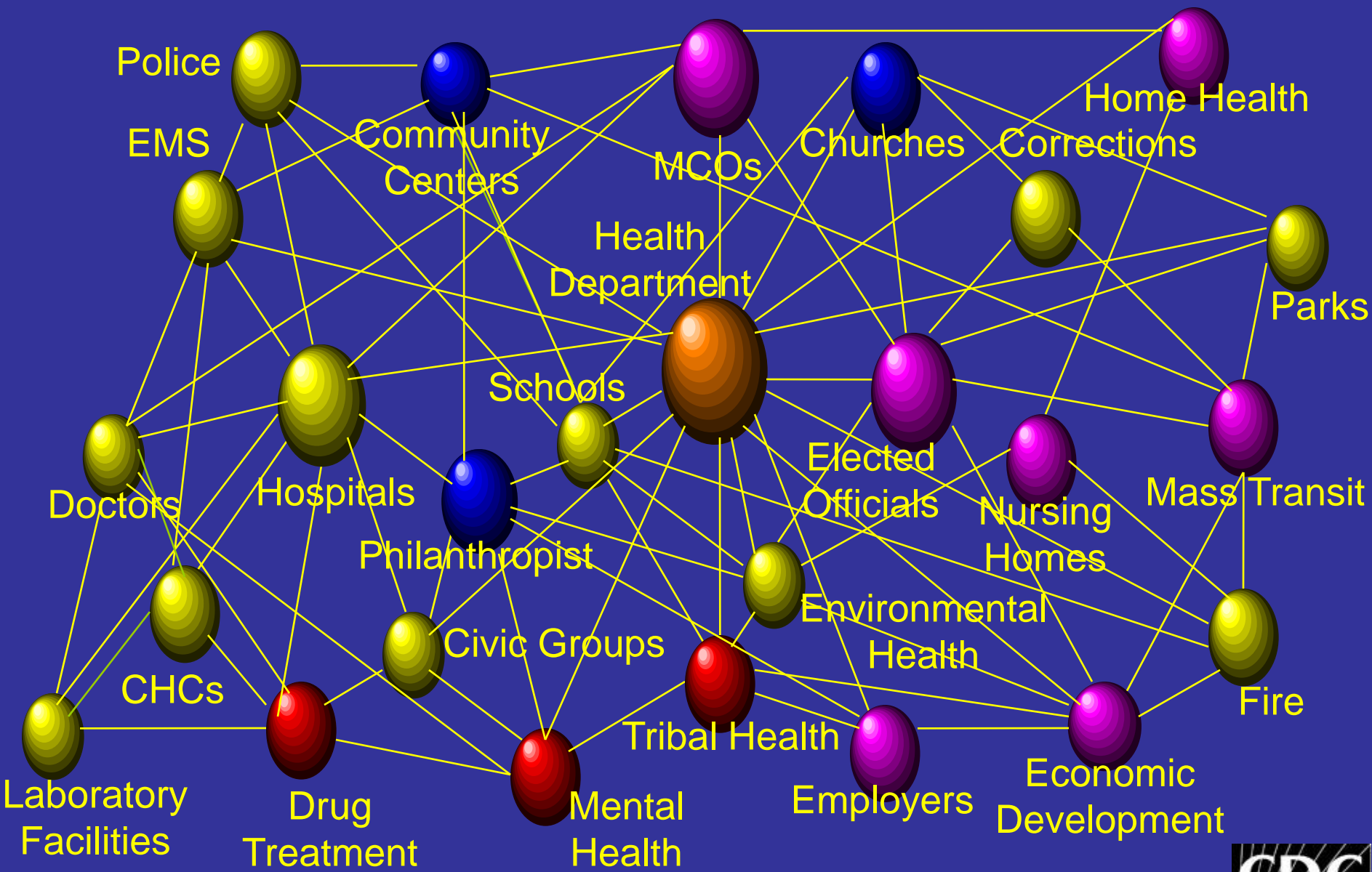


***Health Equity* in Public Health**

Marissa J. Levine, MD MPH FAAFP
State Health Commissioner

The Public Health System

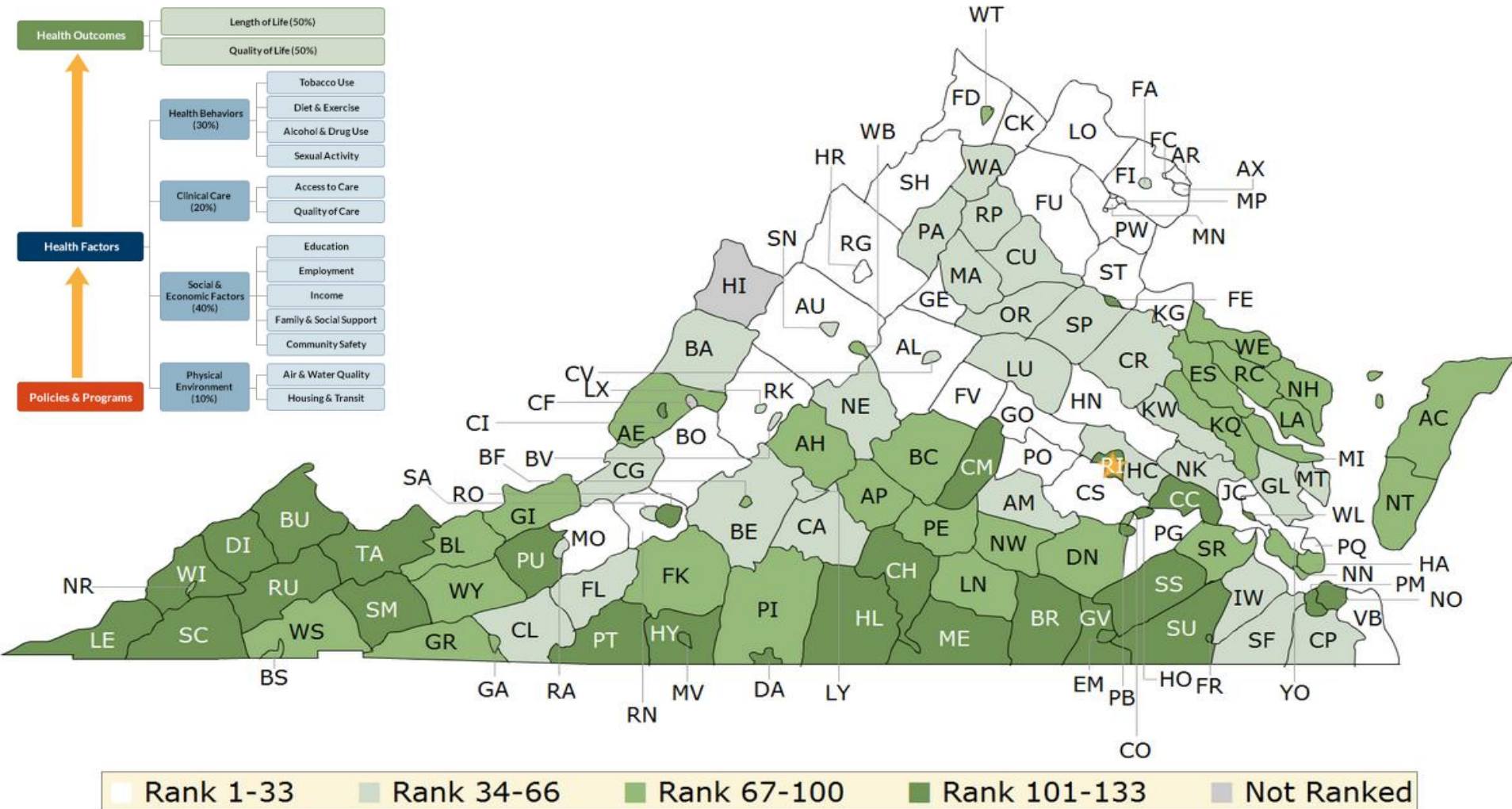


SAFER • HEALTHIER • PEOPLE™



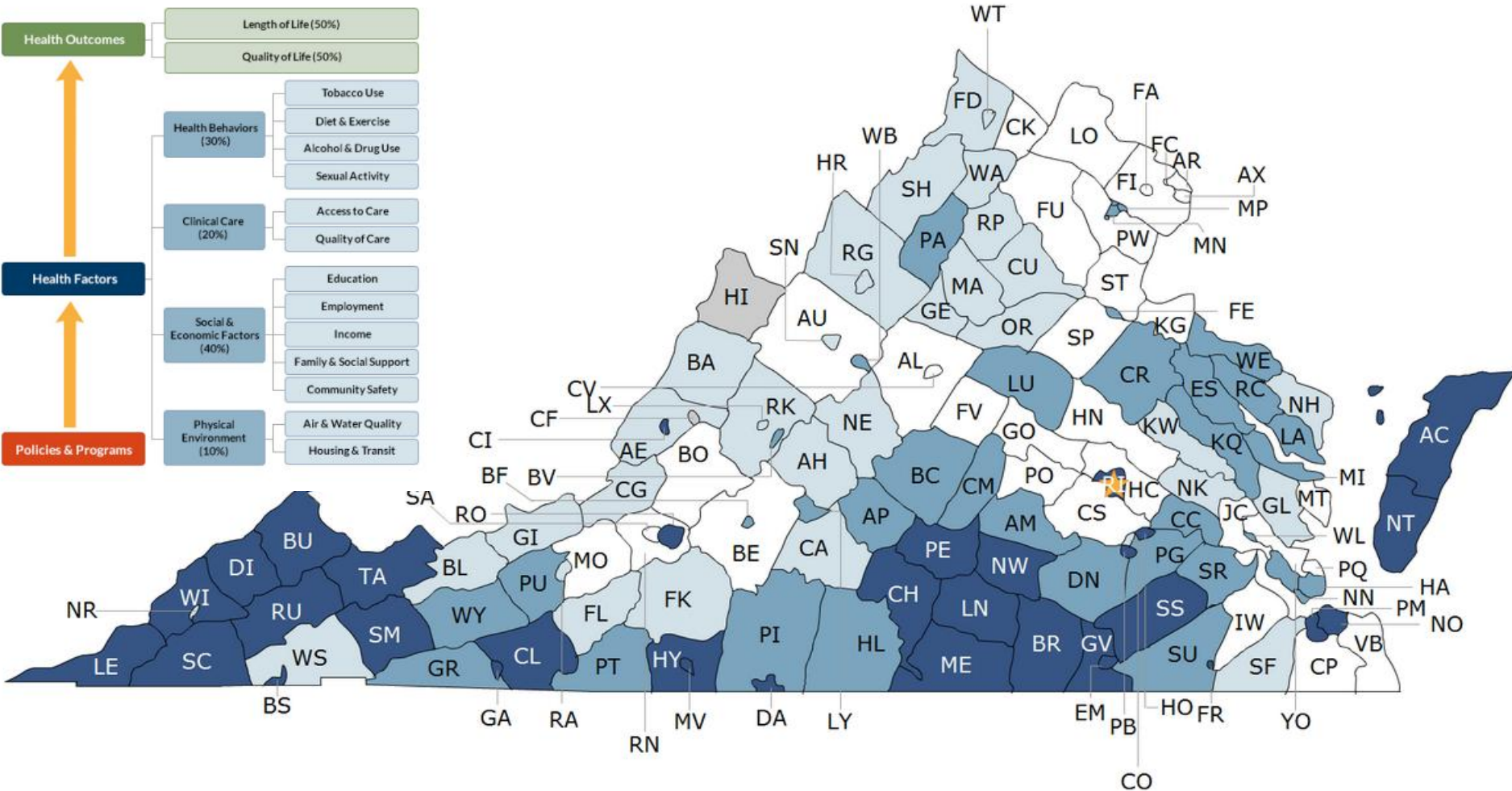
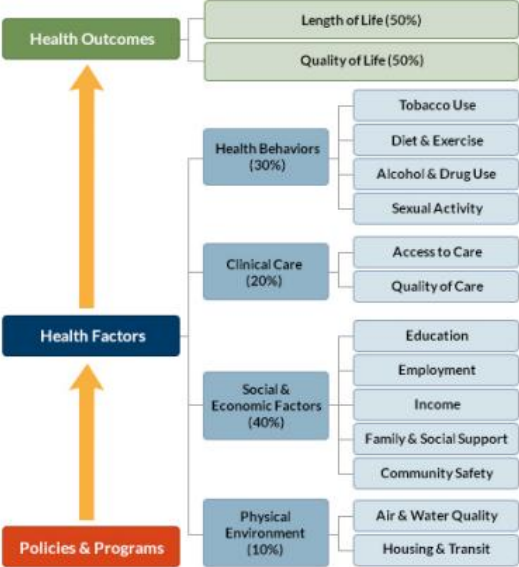
County Health Rankings from Robert Wood Johnson

2014 Health Outcomes - Virginia



County Health Rankings from Robert Wood Johnson

2014 Health Factors - Virginia



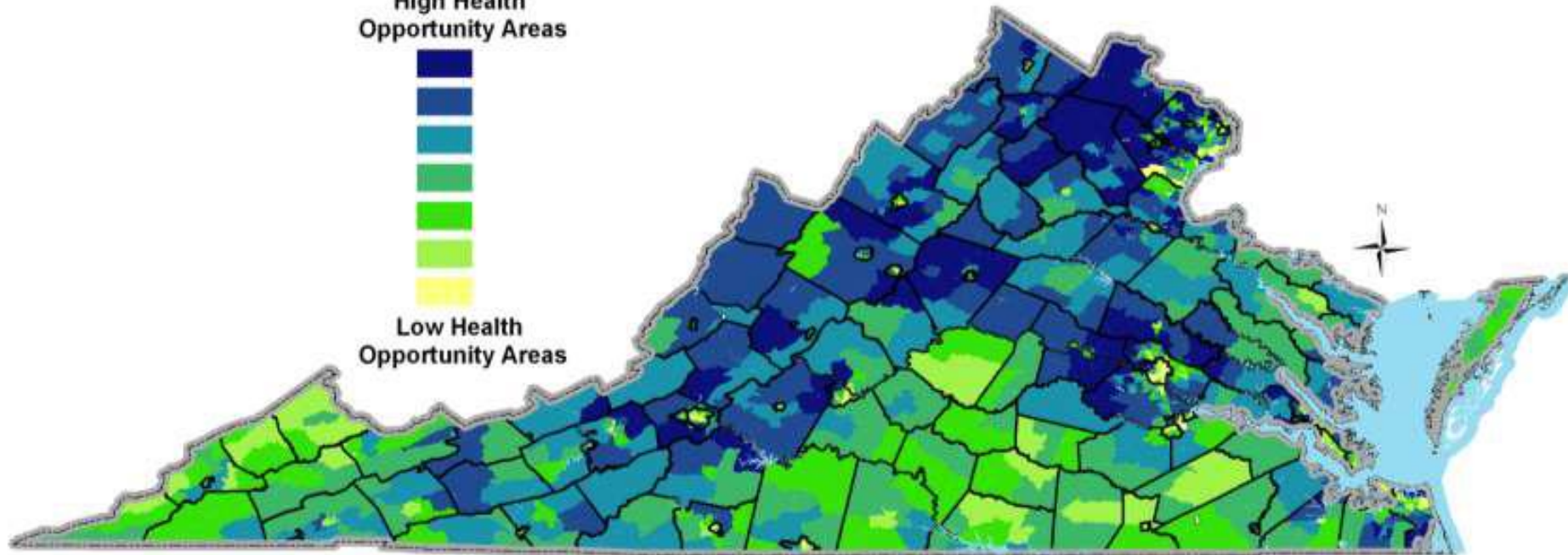
Virginia

Health Opportunity Index (HOI) * By Census Tracts 2009 **

High Health
Opportunity Areas



Low Health
Opportunity Areas



0 37.5 75 150 Miles

* Health Opportunity Index Indicators ~ Education Indicator, EPA Environmental Indicator, Affordability Indicator, Townsend Material Deprivation Indicator, Job Participation Indicator, Population Churning Indicator, Local Commute of Workers Indicator, Racial Diversity Indicator, Population density Indicator & Household Income Indicator

** Data Source: Claritas demographic Data, 2009 and GeoLytics Data, 2009

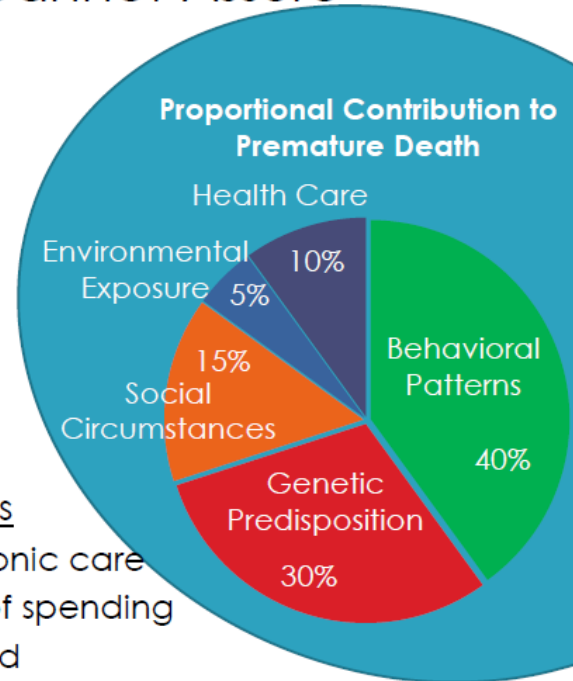
Excellent Health Care Cannot Assure an Individual's Health

Health Is Influenced by 5 Factors

- Genetic predisposition
- Social circumstances
- Environmental exposures
- Behavioral patterns, and
- Health care

U.S. Health Care Expenditure Facts

- 75% of expenditures related to chronic care
- 5% of individuals account for 50% of spending
- 3.5% is spent toward prevention and public health services



Sources: Steven A. Schroeder M.D., We Can Do Better-Improving the Health of American People, N Engl J Med 2007; 357:1221-8, GAO, Preventive Health Activities, December 2012 at <http://www.gao.gov/assets/660/650617.pdf>, and American Public Health Association, Issue Brief: The Prevention and Public Health Fund, July 2012 at http://www.apha.org/NR/rdonlyres/8FA13774-AA47-43F2-8388-1B0757D111C6/0/APHA_PrevFundBrief_June2012.pdf.

Factors that Affect Health

Examples

Smallest
Impact

Counseling
& Education

Eat healthy, be
physically active

Clinical
Interventions

Rx for high blood
pressure, high
cholesterol, diabetes

Long-lasting
Protective Interventions

Immunizations, brief
intervention, cessation
treatment, colonoscopy

Changing the Context
*to make individuals' default
decisions healthy*

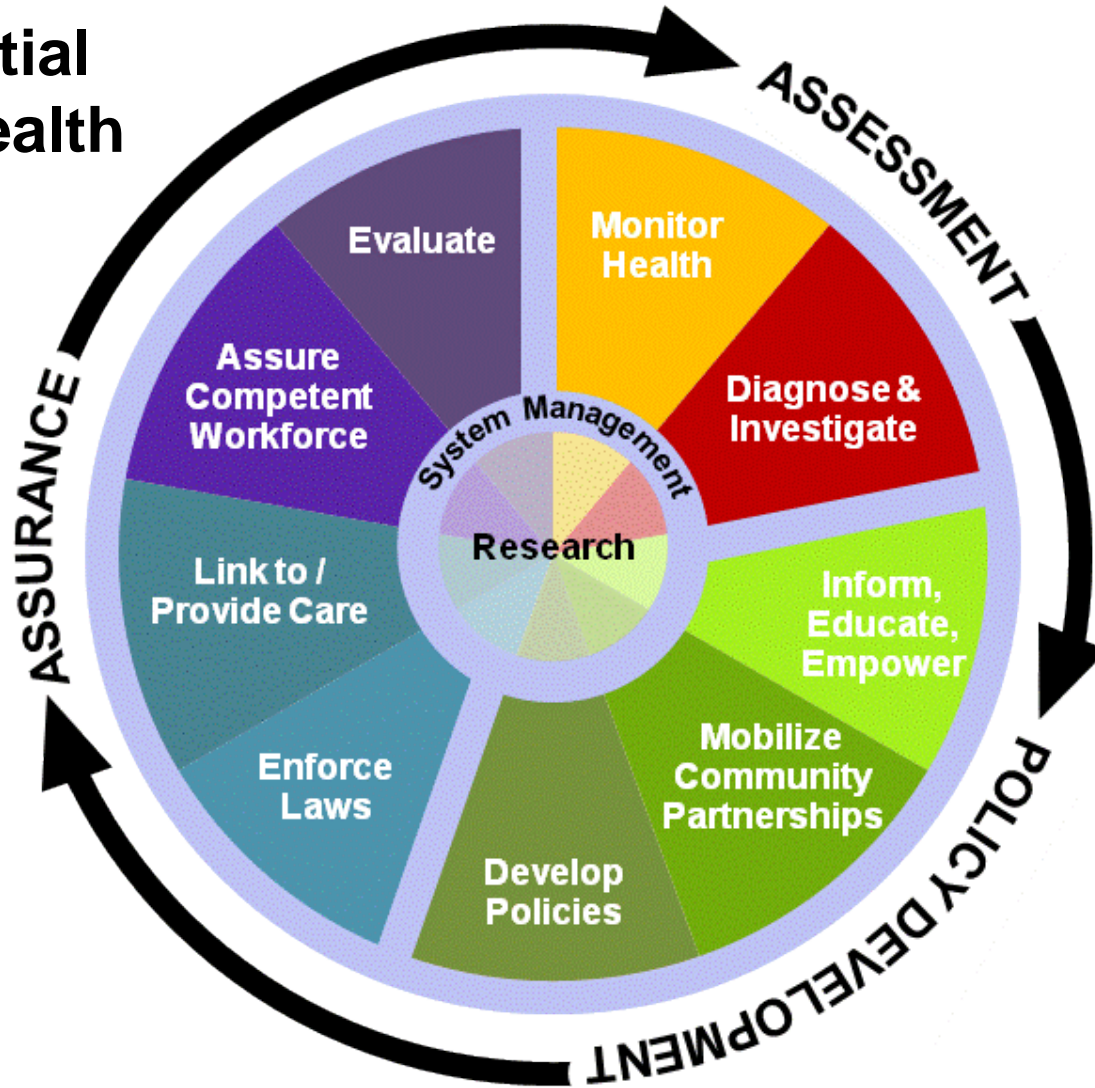
Fluoridation, 0g trans
fat, iodization, smoke-
free laws, tobacco tax

Socioeconomic Factors

Poverty, education,
housing, inequality

Largest
Impact

10 Essential Public Health Services

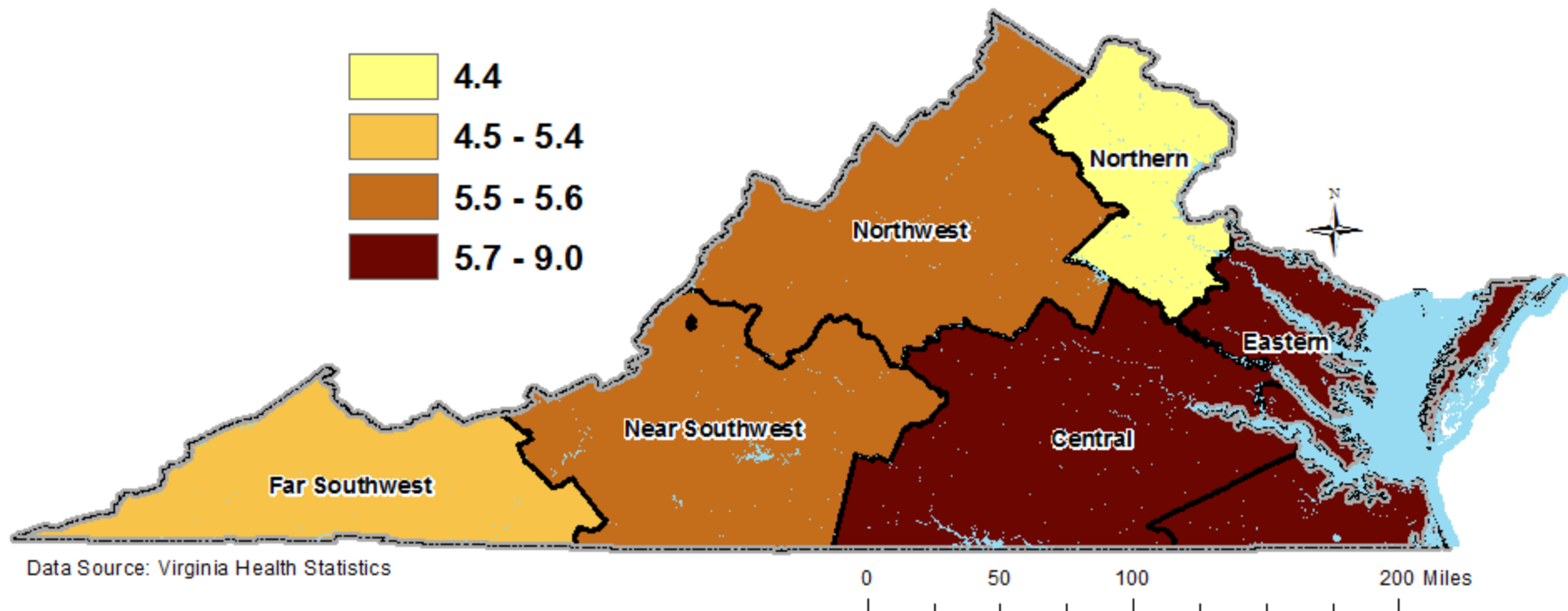
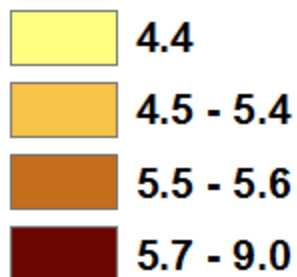


Adopted: Fall 1994, Source: Public Health Functions Steering Committee

**We cannot solve our problems
with the same thinking we
used when we created them**

Albert Einstein

Virginia's Infant Mortality Rate by Hospital Region, 2012



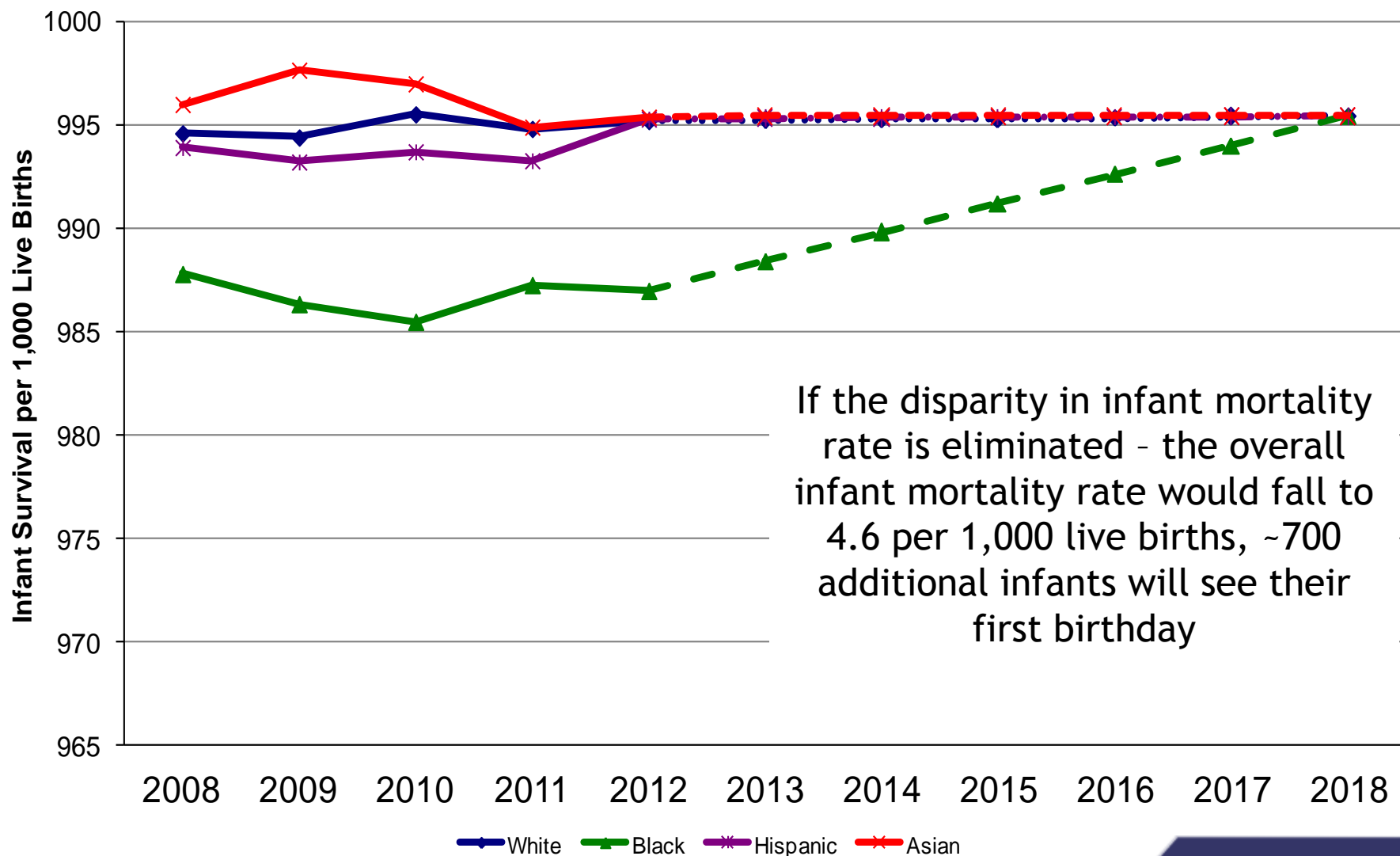
Data Source: Virginia Health Statistics

Virginia's Infant ~~Mortality~~ Strategic Plan THRIVING



Marissa J. Levine, MD MPH
State Health Commissioner

Resident Infant (>1 year of age) Survival Rates By Race/Ethnicity, Virginia 2008-2018



If the disparity in infant mortality rate is eliminated - the overall infant mortality rate would fall to 4.6 per 1,000 live births, ~700 additional infants will see their first birthday

Creating Health Promoting Systems...

that Care

***Health Equity* is Public Health**

- **Change the context**

Vision: Virginia as the healthiest state in the nation

- **Use Processes of Inclusion**
- **Innovate**