

# Education Coordinator Update

Williamsburg, Virginia | October 4, 2024



***Office of Emergency Medical Services***  
Division of Accreditation, Certification & Education

# Housekeeping Rules



Silence/mute electronic devices.

Withhold the urge to visit Facebook, Instagram, Amazon.

Use tobacco products, smoking, vaping, etc. is only permitted in designated locations.

Breaks will be taken, but if nature calls, please feel free to step out.

If there's a fire walk calmly to the nearest exits, which you will see all around the room.



# Consultants

Fitch & Associates completed their report on the Office of EMS and the report is now available on Virginia Town Hall.

<https://townhall.virginia.gov>



# VDH Audit

VDH Internal Audit completed their report on the Office of EMS and the report is now available on Virginia Town Hall.

<https://townhall.virginia.gov>



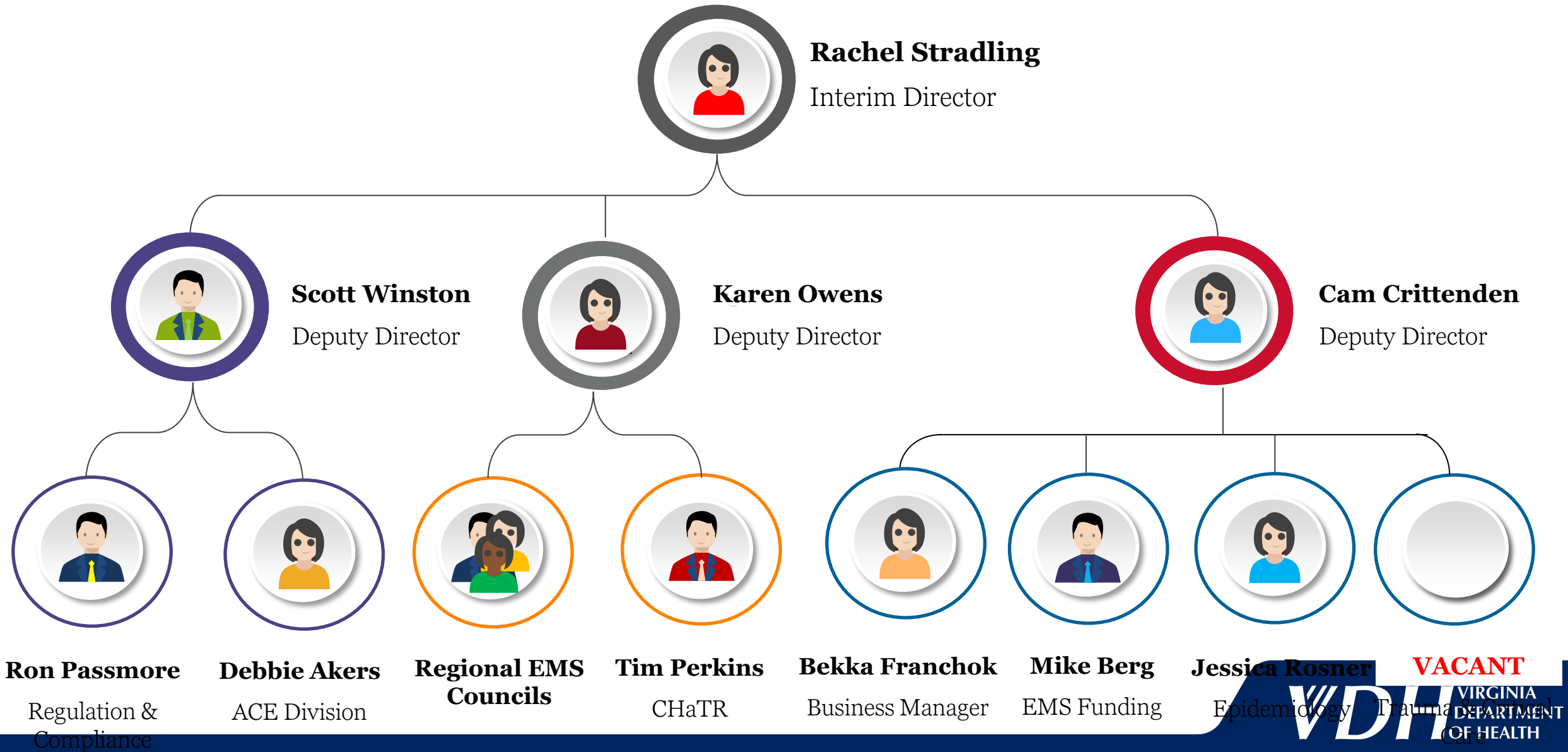
# JLARC Study

The study team will evaluate how effectively the agency organizes and manages its programs; evaluate the adequacy of the agency's staffing; assess the adequacy of its financial management practices, including its management of the many federal grants it relies on; and evaluate the adequacy of the agency's information technology systems.

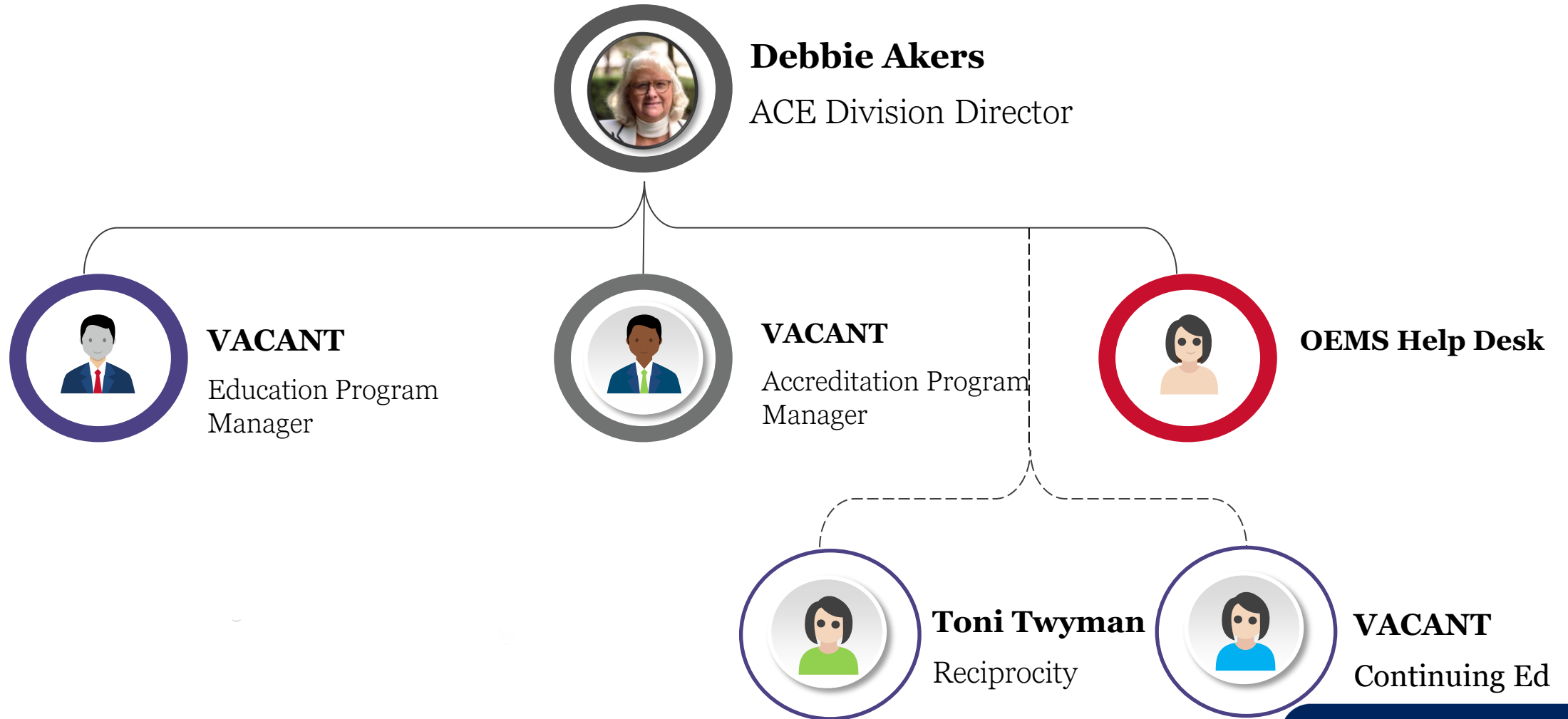
Report Due: November 2024



# Organizational Chart



# ACE Division Org Chart



# EMS Portal HelpDesk

## Changes @ the HelpDesk

- There are now 3 (make that 2 as of October 9<sup>th</sup>) people answering HelpDesk tickets and calls.
- Even faster response times
- HelpDesk tickets and calls are NOT answered on weekends and designated holidays.



**Please Send Your Providers to the Help Desk**



Phone: 804-888-9102



OEMS-AppSupport@vdh.virginia.gov

# Contact Us

**Debbie Akers**

deborah.t.akers@vdh.virginia.gov



**Barry Reeves**

barry.reeves@vdh.virginia.gov

**Sayed Sadaat**

syed.sadaat@vdh.virginia.gov

**Toni Twyman**

toni.twyman@vdh.virginia.gov





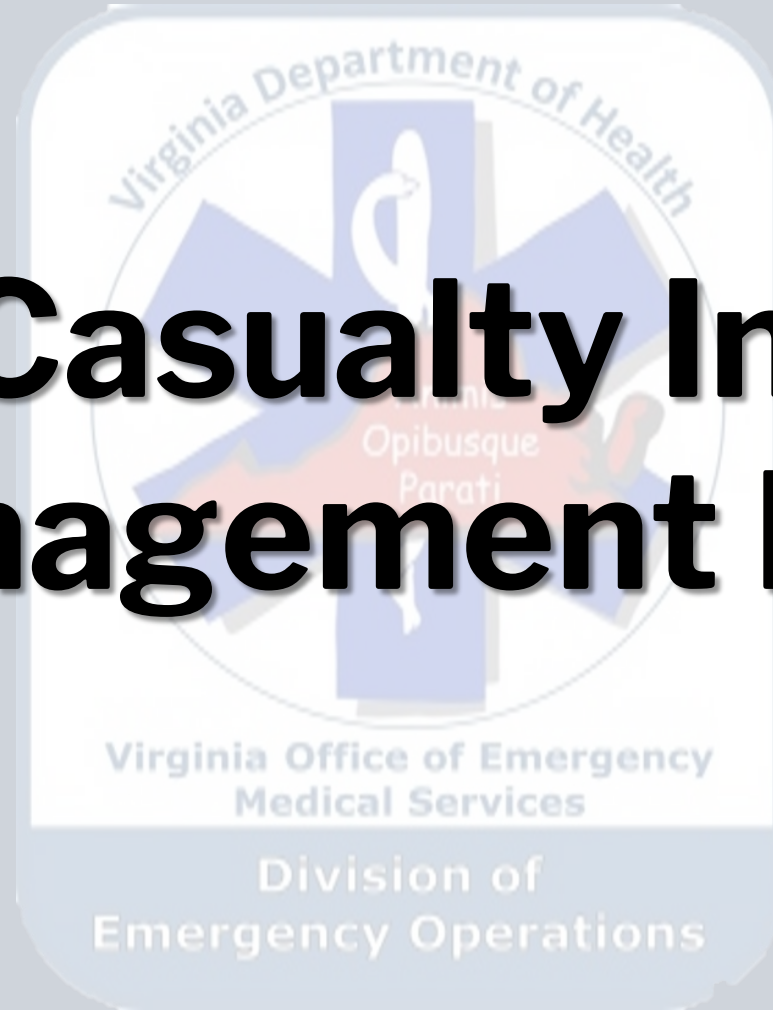
try our  
*mobile app!*



# Emergency Operations Division Update



# Mass Casualty Incident Management I & II





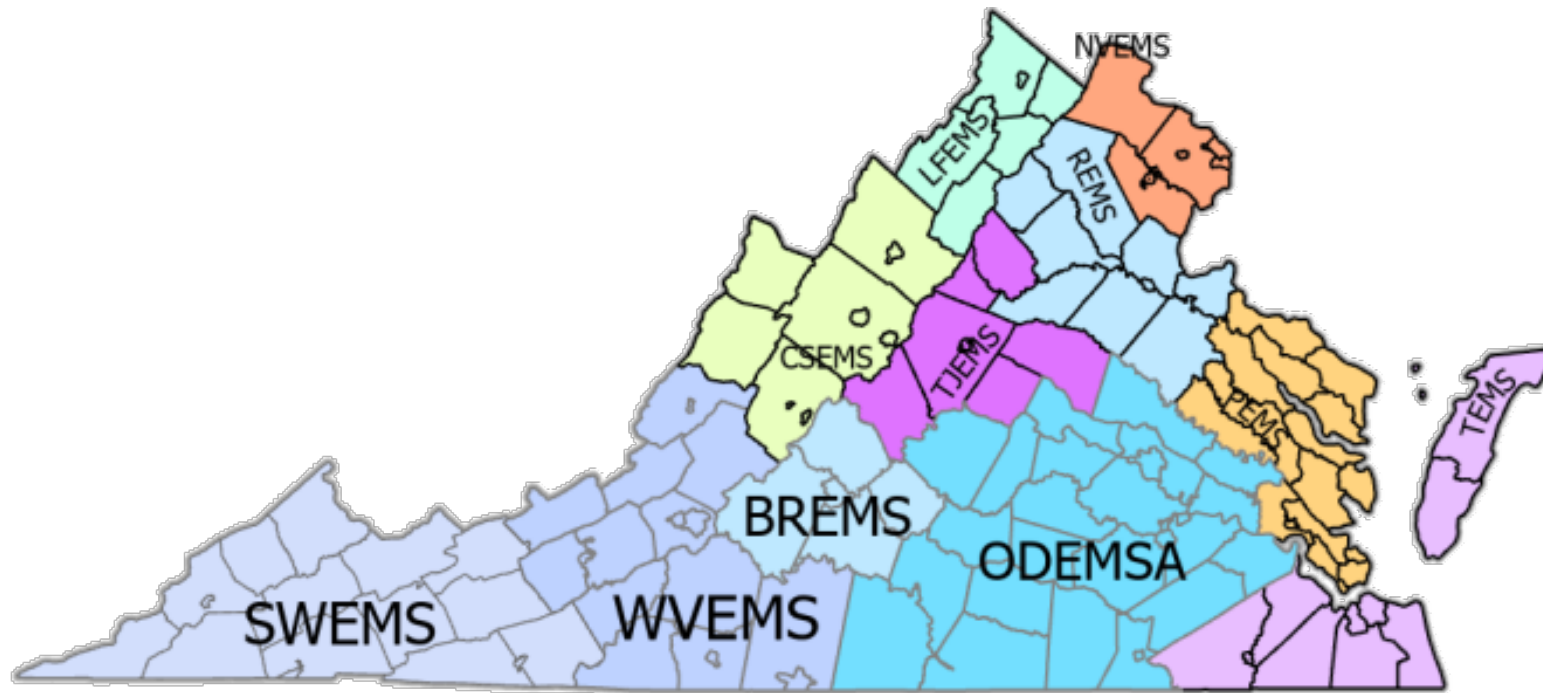
**Are you teaching Virginia's MCIM program  
in your EMT course?**

# MCIM Training Program Manager

**Sam Burnette**

- [samuel.burnette@vdh.virginia.gov](mailto:samuel.burnette@vdh.virginia.gov)
- [eopstraining@vdh.virginia.gov](mailto:eopstraining@vdh.virginia.gov)

**Please refer to your Regional EMS Council MCI Plan for any specific information related to mass casualty incident events**



# Two MCIM Courses Offered in Virginia

## MCIM Module I - Awareness

- Locating/Accounting for Patients*
- Conducting Patient Triage*
- Completing Agency Triage Tag*

## MCIM Module II - Operations

- Treatment/Transport Decisions
- Managing Resources
  - Providers/Personnel
  - Equipment
  - Units

# MCIM I Course Objectives

Define Mass Casualty Incident (MCI)

Define the three goals of mass casualty incident management

Define the three objectives of mass casualty incident management

Describe initial response actions at a mass casualty incident

Understand the START and SALT methods of pre-hospital patient triage

Understand the components and purpose of a Commonwealth of Virginia approved pre-hospital triage tag.



# MCIM I Skill Objectives

Demonstrate the ability to correctly triage simulated patients using the START triage method.

Demonstrate the ability to correctly triage simulated patients using the SALT triage method.

Demonstrate the ability to correctly complete a Virginia approved pre-hospital triage tag.

# MCIM II Course Objectives

Identify key roles in the Medical Branch / Group at an MCI event

Describe the duties and responsibilities of Triage, Treatment, and Transport Units

Describe the duties and responsibilities of the various positions within the Triage, Treatment, and Transport Units

# MCIM II Skill Objectives

Complete mass casualty incident management forms

Manage triage, treatment, and transport of simulated patients from the scene of an MCI to definitive care

# EC Requirements for Initial EMT Courses

- Deliver MCIM I – Awareness Level
- Contact Sam to get access to MCIM I materials on Moodle



# MCIM I Class Requirements

You will need:

- Minimum of (5) students
- Maximum of (30) students
- Copy of your agency's triage tags for each student
- Simulated patient cards or patients
- Triage tape

# VDH VIRGINIA DEPARTMENT OF HEALTH

**Cheyenne Dalton**

as evidence of satisfactory completion of the

**MASS CASUALTY INCIDENT MANAGEMENT  
MODULE I & MODULE II**

program requirements as prescribed by the Virginia Department of Health - Office of Emergency Medical Services.

In testimony whereof this certificate is awarded  
this 23<sup>rd</sup> day of August 2022



Gary Brown,  
Director  
Office of Emergency Medical Services

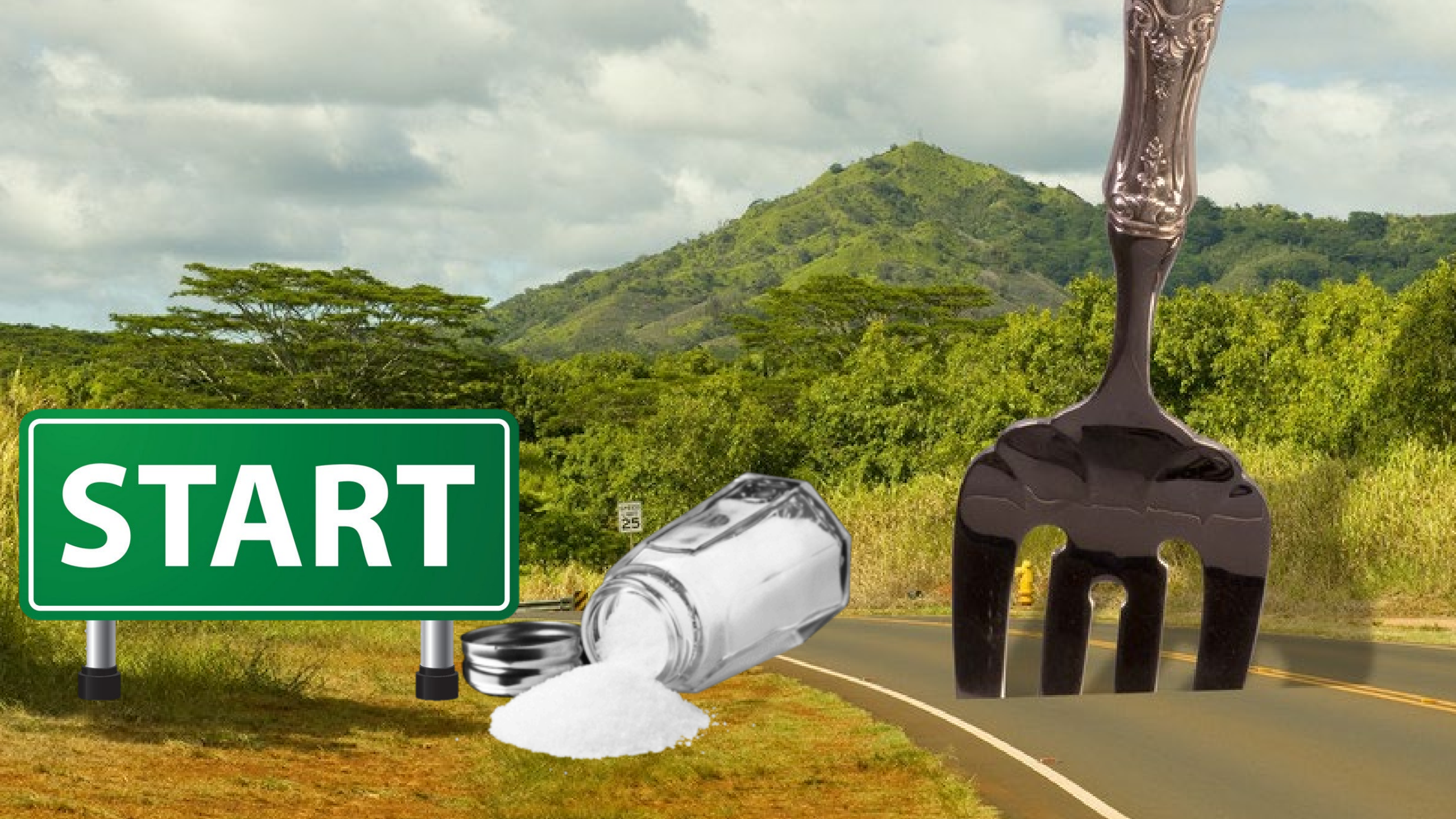


Course Number: 220823-590-43M

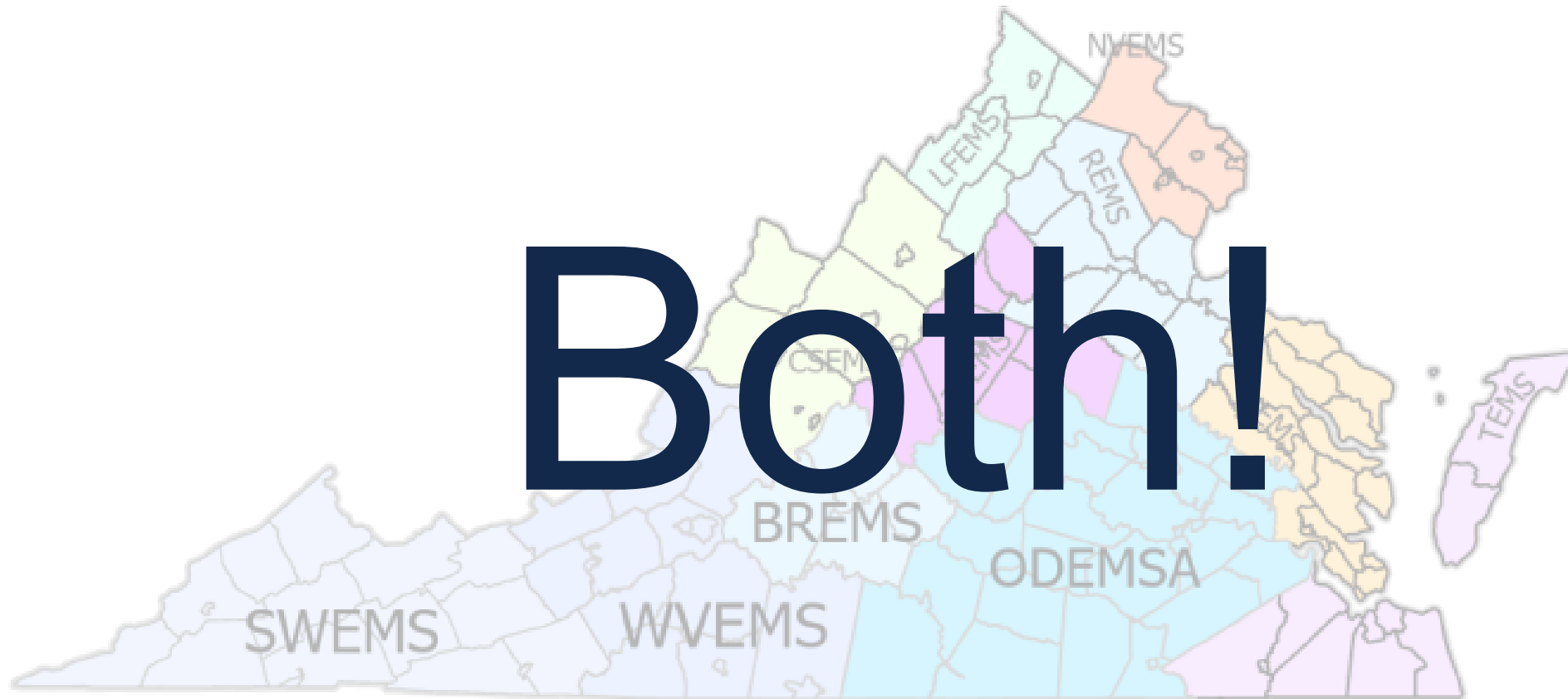


Sam Burnette,  
Emergency Services Coordinator  
Division of Emergency Operations

**START**

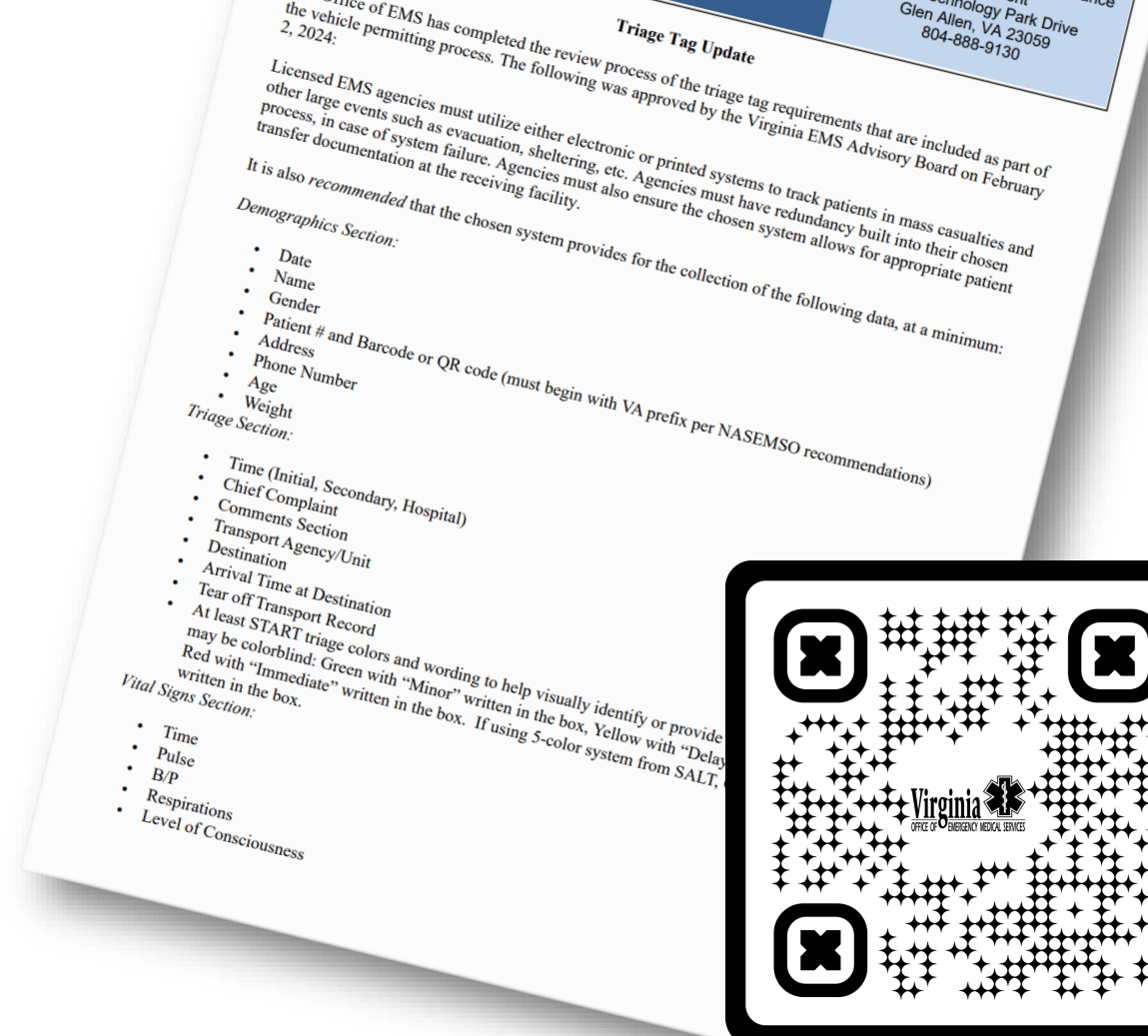


# Which System Do I Use: START of SALT



# Triage Tags---whew!!

There is no longer a requirement for agencies to purchase a specific, Office of EMS-approved tag to meet permitting requirements. If an agency chooses to utilize printed triage tags, they may purchase any commercially available tag that meets their needs or may purchase tags of their own design.



SCAN ME



# Summary

- EC can teach MCIM I, but cannot teach MCIM II unless they complete an MCIM TTT
- If you want your students to receive certificates of attendance, you must submit student registration forms and roster to MCIM Program Manager.
- Be familiar with and provide instruction on both START and SALT
- Train according to your regional/agency MCI plan

# Questions?

# National Registry Update



# National Registry Fee Increase

The fees for National Registry cognitive exams effective July 1, 2024:

- ❑ EMR: \$88
- ❑ EMT: \$104
- ❑ AEMT: \$144 ~~now~~ \$159
- ❑ Paramedic: \$160 ~~now~~ \$175



# National Registry Recertification Fees

Recertification Fees Remain the Same in 2024

Increasing on October 1, 2025 (except EMR)

Recertification Level	2024 Fee	2025 Fee	Increase	Effective Date
EMR	\$18	\$21	\$3	4/1/26
EMT	\$25	\$29	\$4	10/1/25
AEMT	\$26	\$30	\$4	10/1/25
Paramedic	\$32	\$37	\$5	10/1/25

# Recertification the Virginia way!



## 2025 Virginia Recertification Requirements

Virginia has adopted the new National Continued Competency Program (NCCP) model set forth by the National Registry of EMTs, with an effective date of October 1, 2023 for all certification levels. While maintaining the NCCP's framework, Virginia's approved plan provides customized details outlining standardized course equivalencies, credit allocations across topic domains, and maximum hours accepted for each course offering. [Click here for more information.>>](#)



Will be updated and posted by  
10/09/2024

# National Registry's New Continuing Education



# CAPCE Continuing Education Codes

There are various types of continuing education (CE) delivery methods/modes. In order to clearly delineate between the different methods, CAPCE has created a label for each method.

- F1
- F2
- F3
- F4
- F5

The following slides help further define the different CAPCE codes and different methods of delivering continuing education.





# F1: Live In-Person Continuing Education

Also considered “traditional” education. The only differentiating factor between F1 and F2 is whether or not the class you’re attending is required every year to recertify.

- A good example of an F1 class would be an in-person class you attend that details a not new topic in EMS.
- It may be a class you attend at a conference or a workshop you sign up for that really interests you.

## F2: Live In-Person Continuing Education (Continuous/Cyclical)

Is the course is required for you to recertify and maintain your certificate/license?

- A good example here would be CPR for the BLS Healthcare provider, or ACLS if you're an AEMT or Paramedic.

# F3: Online Distributive Continuing Education

This is the most common type of CE you'll find on the web. These are individual courses that are accessible via websites that provide CE hours after you've successfully passed an exam at the conclusion of the course.

These courses can be written, audio, or video.

- Depending on your EMT level, the NREMT allows a certain portion of your CE hours to be F3 distributive.
- In Virginia, this would be:
  - 24-7 EMS Now
  - CareerCert
  - Lexipol – EMS1 Academy
  - Prodigy
  - Distance CME
  - VectorSolutions
  - FoamFrat
  - FlightBridgeEd

## F4: Adaptive Learning

A course or program where students' actions, performance and choices guide the direction of learning activities, including virtual programs using adaptive learning technology and patient simulations. Equivalent to classroom instruction which helps advance EMS education and CPR training.

Example: Resuscitation Quality Improvement RQI and Heartcode 2025

# F5: Virtual Instructor-Led Training (VILT) Continuing Education

VILT continuing education courses are held on the web in a webinar-style environment. You are attending a course in real-time with an instructor at a scheduled time. Courses contain interactive polling questions which must be answered to show your proof of attendance.

There is a chat feature as well to interact with other attendees and ask questions throughout the class, share stories, and elaborate on learning objectives.

- In Virginia, these programs must meet the requirements outlined in OEMS document [Delivering High-Quality Instruction Online](#).

# Online CE Resources for Providers!

The screenshot displays a web browser window with the URL `vdh.virginia.gov`. The page is titled "CONTINUING EDUCATION RESOURCES" and features a navigation menu on the left with the following items: Office of Emergency Medical Services, Virginia Certification Verification, Stay Connected, Accreditation, Certification & Education, Administration & Finance, Community Health and Technical Resources, Emergency Operations, EMS & Trauma Data, Regulation & Compliance Enforcement, Trauma & Critical Care, OEMS Information, and Other EMS Programs and Links. The main content area includes a banner with a green sign that reads "CONTINUING EDUCATION Straight Ahead". Below the banner are three promotional tiles: "Free Continuing Education" featuring a chalkboard that says "Oh Yeah... IT'S FREE" and the Vector Solutions logo; "Online Continuing Education" featuring a computer monitor; and "Virtual Instructor-led Training" featuring a man in a suit holding a laptop. At the bottom of the page, the text "EMS & Fire" is partially visible.

# Virginia Continuing Education Levels

- **Provider Levels**

- Category 1 – Required – NCCR
  - NCCR - National Continued Competency Requirements
- Category 2 – ‘Flexible’ – LCCR/ICCR
  - LCCR - Local Continued Competency Requirements
  - ICCR – Individual Continued Competency Requirements
- ~~Category 3 – M~~ **ELIMINATED** ~~if~~

- **Educator Levels**

- Category 0 – F (Education Coordinator Admin Hours)
- Category 6 – F (Education Coordinator Teaching)
- Category 7 – H (EC Candidate – BLS Initial Training)
- Category 8 – H (EC Candidate – Other)

# Refresher Programs



Virginia does not offer or recognize “*Refresher*” programs for continuing education.

Virginia offers continuing education programs which meet the needs of recertification for EMS providers in the Commonwealth and the National Registry.





# National Registry

# National Registry Requirements




Virginia continuing education (CE) requirements mirror those of National Registry allowing for easy recertification of a provider's National Registry and Virginia certifications.


# BLS & ALS Recertification Requirements as of October 2023

## CE Requirements

- EMR – 16 hours
- EMT – 40 hours
- AEMT – 50 hours
- Intermediate – 55 hours
- Paramedic – 60 hours



Form: TR-64



---

### BLS Certified | Recertified

NCCR Areas		Prior to October 1, 2023		On or after October 1, 2023	
		Required Hours		Required Hours	
		A EMR	B EMT	A EMR	B EMT
11	Airway, Respiration and Ventilation	1.0	1.5	1.5	4.0
12	Cardiovascular	2.5	6.0	2.0	5.0
13	Trauma	0.5	1.5	1.0	3.0
14	Medical	3.0	6.0	2.5	6.0
15	Operations	1.0	5.0	1.0	2.0
<b>TOTAL NCCR HOURS</b>		<b>8</b>	<b>20</b>	<b>8*</b>	<b>20*</b>
<b>LCCR/ICCR HOURS</b>		<b>8</b>	<b>20</b>	<b>8</b>	<b>20</b>
<b>TOTAL HOURS</b>		<b>16</b>	<b>40</b>	<b>16</b>	<b>40</b>

### ALS Certified | Recertified

NCCR Areas		Prior to October 1, 2023			On or after October 1, 2023		
		Required Hours			Required Hours		
		C AEMT	I Intermediate	E Paramedic	C AEMT	I Intermediate	E Paramedic
16	Airway, Respiration and Ventilation	2.5	3.5	3.5	5.0	5.5	6.0
17	Cardiovascular	7.0	7.5	8.5	6.0	6.5	7.0
18	Trauma	3.0	3.0	3.0	4.0	4.5	5.0
19	Medical	7.5	7.5	8.5	7.0	7.5	8.0
20	Operations	5.0	6.5	6.5	3.0	4.0	4.0
<b>TOTAL NCCR HOURS</b>		<b>25</b>	<b>28</b>	<b>30</b>	<b>25*</b>	<b>28</b>	<b>30*</b>
<b>LCCR/ICCR HOURS</b>		<b>25</b>	<b>28</b>	<b>30</b>	<b>25</b>	<b>28</b>	<b>30</b>
<b>TOTAL HOURS</b>		<b>50</b>	<b>55</b>	<b>60</b>	<b>50</b>	<b>55</b>	<b>60</b>

\* For those maintaining your Registry certification, pediatric content must constitute 10% of the National Component. Pediatric CE content is not tracked as a separate area by the Virginia CE Reporting system. All CE topics which are considered pediatric will begin with a prefix of "PED"

Virginia Department of Health  
Office of Emergency Medical Services  
<http://www.vdh.virginia.gov/emergency-medical-services/>

Revised: June 2024  
Page 1 of 1

2016 | 2025 BLS & ALS Recertification Requirements

# Category 1 (NCCR)

- Requires a “Qualified Instructor” to be present
- Content based on the objectives in the National EMS Education Standards (NEMSES)
- Where can you find these resources?

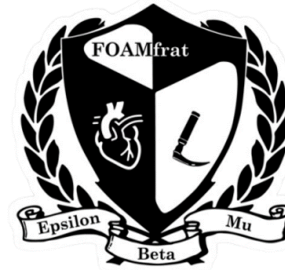


# Category 2 (LCCR / ICCR)

- “Qualified Instructor” must be present
- EMS related topics



# Online CE Resources

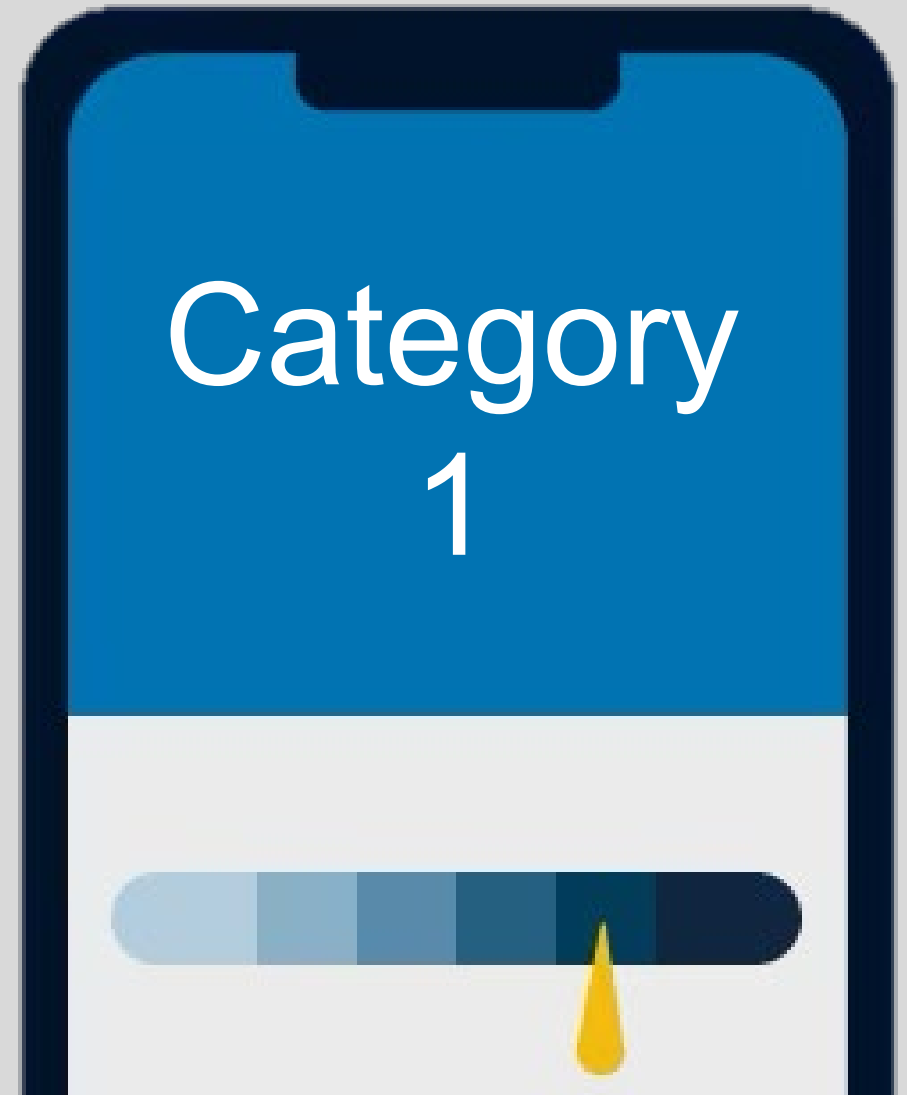


<https://www.vdh.virginia.gov/emergency-medical-services/education-certification/provider-resources/web-based-continuing-education/>

## Category 1 Topics

- Airway, Respiration, Ventilation
- Cardiovascular
- Trauma
- Medical
- Operations

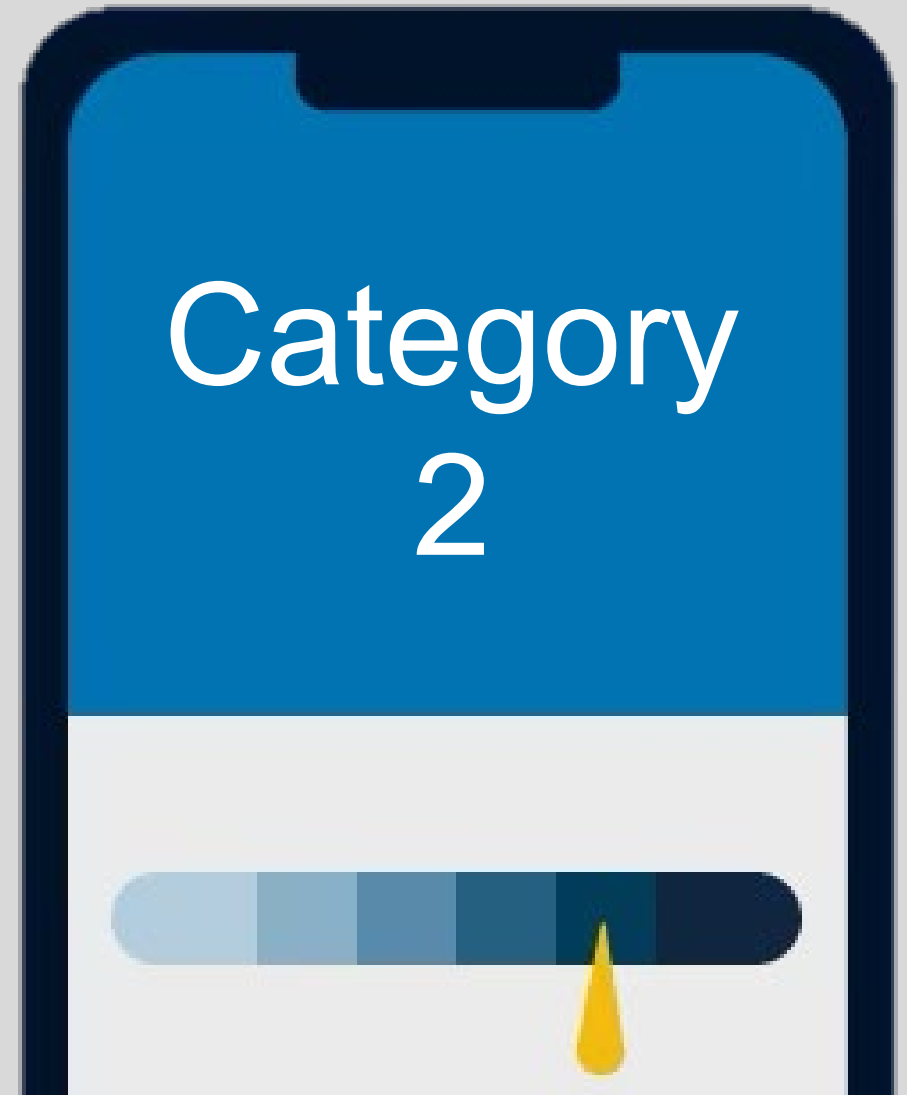
Specific examples of content that applies is coming up.



## Category 2

- 8 hours for EMR
- 20 hours for EMT
- 25 hours for AEMT
- 27 hours for Intermediate
- 30 hours for Paramedic

Specific examples of content that applies is coming up.





**But Wait,  
THERE'S  
MORE!**

# NREMT Changes to Continuing Education



# National Registry Has Changed Continuing Education

Continuing education requirements will be changing later this year as we prepare for the 2025 National Registry recertification cycle.

The National Continued Competency Program (NCCP) was constructed using methodology similar to that of the [American Board of Medical Specialties](#) requirements and streamlines the recertification process into three strategic categories

The National Continued Competency Program encourages Nationally Certified EMS personnel to pursue life-long education while also providing state and local agencies the freedom to customize continuing education to meet local operational needs.

# National Component Requirements

The national component of the NCCP constitutes 50% of the total recertification requirements. Topics included in the national reflect current trends in evidence-based medicine, scope of practice changes and position papers from numerous associations involved with EMS research.

- Expiration dates through **Sept. 30, 2025**
  - [Download the 2016 NCCP Model \(PDF\)](#)
- Expiration dates on or after **March 31, 2026**
  - [Download the 2025 NCCP Model \(PDF\)](#)



# Local Component Requirements



The local component constitutes 25% of the total recertification requirements. Specific topic requirements may be defined by your specific state, region or local agency. Examples of local content topics typically include state or local protocols, areas of specialization, or tasks that require additional focus based on QA/QI.

The local component allows national recertification requirements to be adapted to the needs of the state and local agencies. If your state, region, or local agency does not specify topics, the content is considered flexible.



# Individual Component Requirements

The individual constitutes 25% of the recertification requirements. Registrants are free to take any state or CAPCE approved EMS-related education.



Remember This Date

**October 1, 2023**

# BLS CE Changes – Ended Effective Sept. 30, 2023

## 2016 Model

## 2025 Model

NCCR Areas		Prior to October 1, 2023		On or after October 1, 2023	
		Required Hours		Required Hours	
		A EMR	B EMT	A EMR	B EMT
11	Airway, Respiration and Ventilation	1.0	1.5	1.5	4.0
12	Cardiovascular	2.5	6.0	2.0	5.0
13	Trauma	0.5	1.5	1.0	3.0
14	Medical	3.0	6.0	2.5	6.0
15	Operations	1.0	5.0	1.0	2.0
<b>TOTAL NCCR HOURS</b>		<b>8</b>	<b>20</b>	<b>8*</b>	<b>20*</b>
<b>LCCR/ICCR HOURS</b>		<b>8</b>	<b>20</b>	<b>8</b>	<b>20</b>
<b>TOTAL HOURS</b>		<b>16</b>	<b>40</b>	<b>16</b>	<b>40</b>



# ALS CE Changes – Effective October 1, 2023

2016 Model

2025 Model

NCCR Areas		Prior to October 1, 2023			On or after October 1, 2023		
		Required Hours			Required Hours		
		C AEMT	I Intermediate	E Paramedic	C AEMT	I Intermediate	E Paramedic
16	Airway, Respiration and Ventilation	2.5	3.5	3.5	5.0	5.5	6.0
17	Cardiovascular	7.0	7.5	8.5	6.0	6.5	7.0
18	Trauma	3.0	3.0	3.0	4.0	4.5	5.0
19	Medical	7.5	7.5	8.5	7.0	7.5	8.0
20	Operations	5.0	6.5	6.5	3.0	4.0	4.0
<b>TOTAL NCCR HOURS</b>		<b>25</b>	<b>28</b>	<b>30</b>	<b>25*</b>	<b>28</b>	<b>30*</b>
<b>LCCR/ICCR HOURS</b>		<b>25</b>	<b>28</b>	<b>30</b>	<b>25</b>	<b>28</b>	<b>30</b>
<b>TOTAL HOURS</b>		<b>50</b>	<b>55</b>	<b>60</b>	<b>50</b>	<b>55</b>	<b>60</b>

# Awarding CE for Internet Based Training Certificates

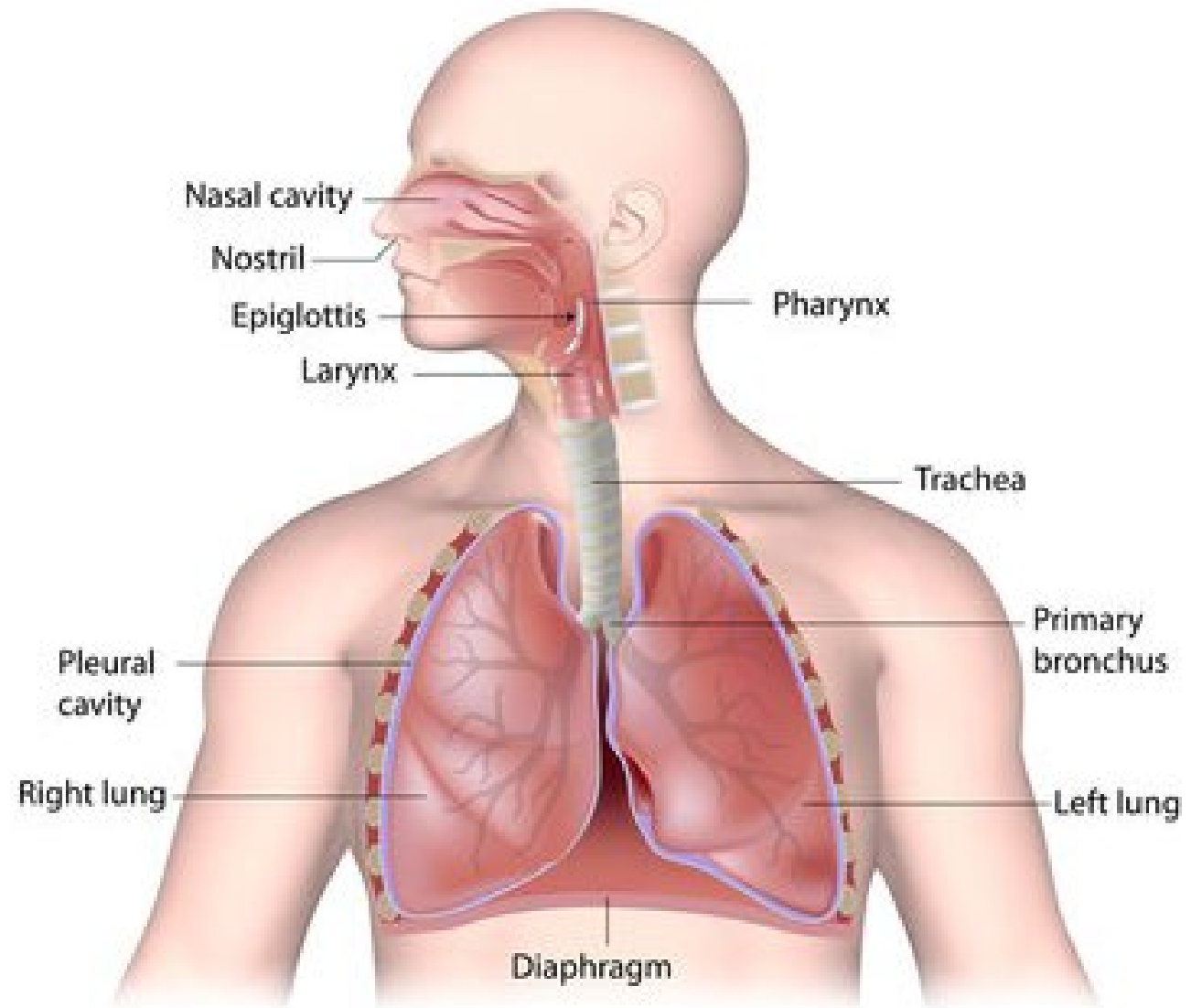
—

# Changes in CE Area Classification with NREMT

—

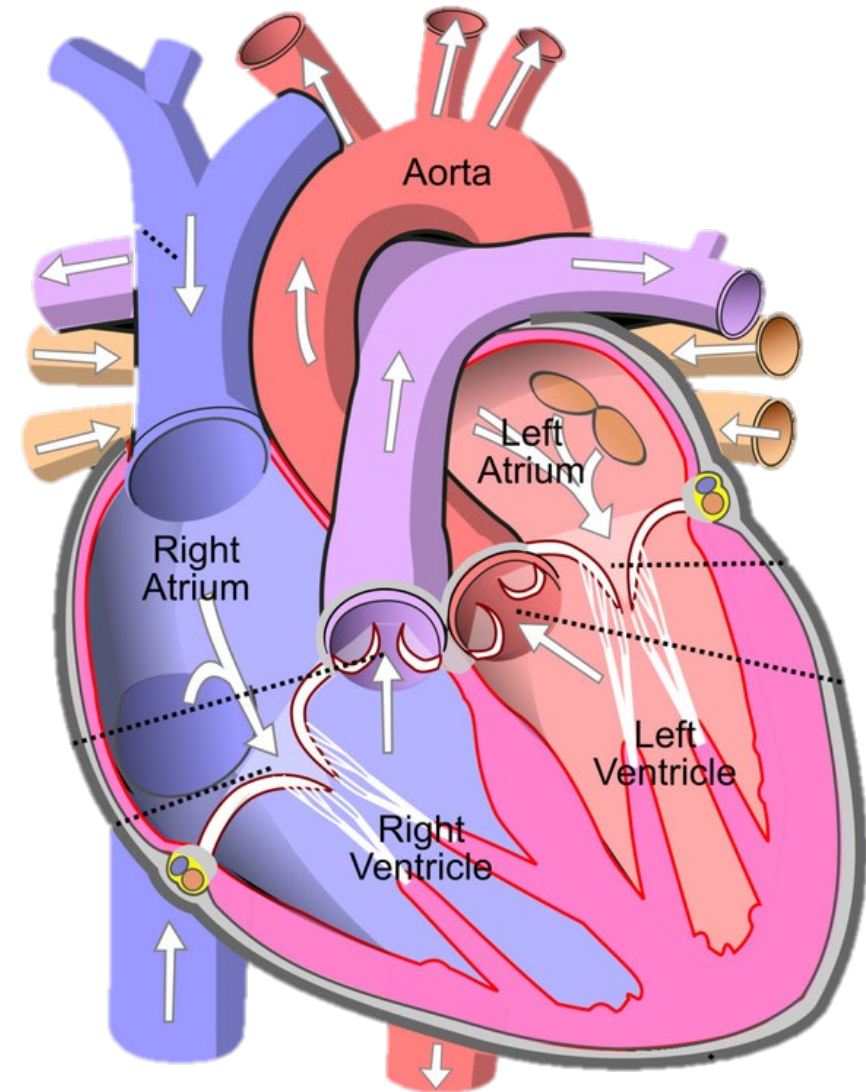
# Airway

- Ventilation
- Oxygenation
- Capnography
- Airway Structure

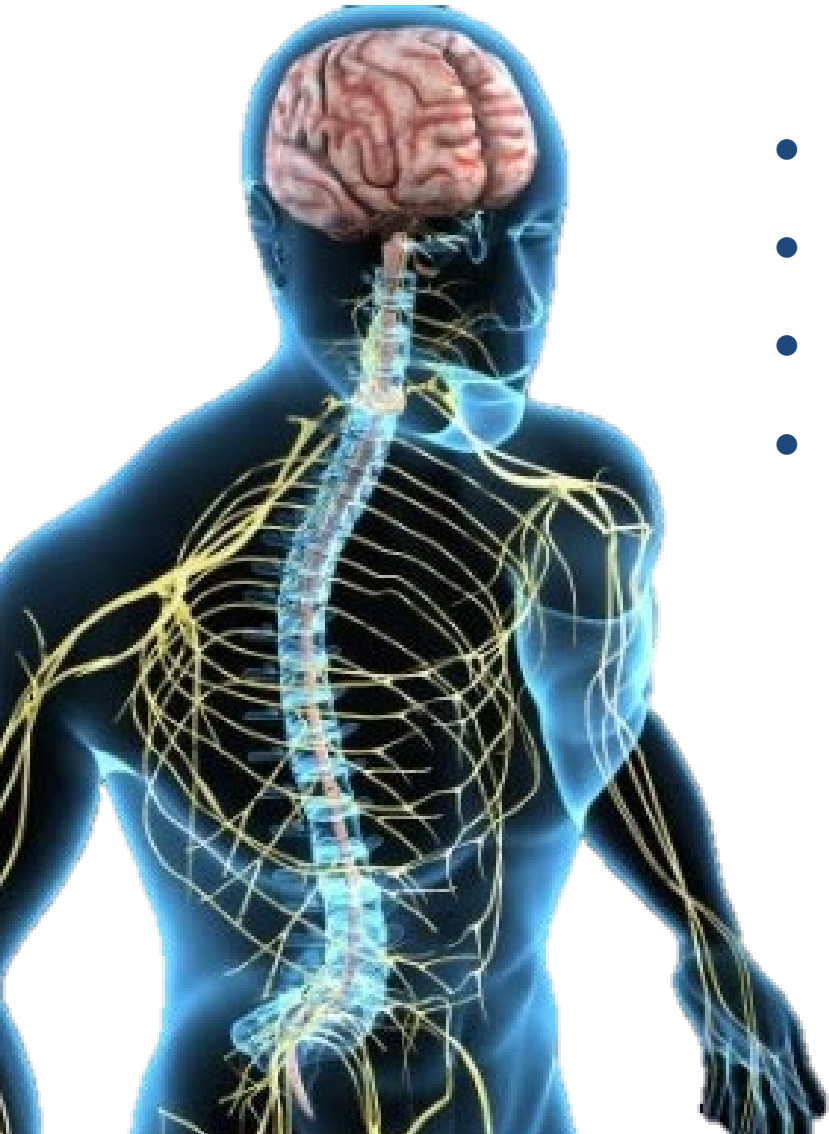


# Cardiovascular

- Cardiac Arrest
- Post Resuscitation Care
- LVADS's
- Congestive Heart Failure
- Stroke
- Acute Coronary Syndrome
- Pediatric Cardiac Arrest
- Rate Disturbances



# Trauma



- Fluid Resuscitation
- CNS Injury
- Trauma Triage
- Hemorrhage Control





# Medical

- Special Healthcare Needs
- OB Emergencies
- Medical Delivery
- Pain Management
- Behavioral Emergencies
- Endocrine Emergencies
- Immunological Emergencies
- Infectious Diseases
- Toxicological Emergencies
- Neurological Emergencies (Seizures)





# Operations

- Ambulance Safety
- Field Triage (MCI & Disasters)
- EMS Provider Hygiene, Safety & Vaccinations
- Evidence Based Guidelines
- At Risk Populations
- Pediatric Transport
- Cultural Safety
- Crew Resource Management
- EMS Research





# Standardized Course Guide

## Standardized Course Guide - NCCP Model 2025 - National Component



National Registry of  
Emergency Medical Technicians®  
THE NATION'S EMS CERTIFICATION™

NCCR	National Component Requirement by Level	Airway	Cardiology	Trauma	Medical	Operations	Total National Component Credits
NREMR	Emergency Medical Responder	1.5	2	1	2.5	1	8
NREMT	Emergency Medical Technician	4	5	3	6	2	20
NRAEMT	Advanced Emergency Medical Technician	5	6	4	7	3	25
NRP	Paramedic	6	7	5	8	4	30

Note: Total credits required in the NCCP 2025 Model (National + Local + Individual) vary by level. EMR = 16, EMT = 40, AEMT = 50, Paramedic = 60

# Cardiology

Acronyms

Full Course Name of Standardized Course Equivalence

Note: You must have at least 10% of your total credits in pediatric content

Cardiology		Airway	Cardiology	Trauma	Medical	Operations	Course Max.Credit
CPR- HCP	CPR - Healthcare Professional	✓	✓		✓		4
ACLS	Advanced Cardiac Life Support	✓	✓	✓	✓		10
ALS	Advanced Life Support	✓	✓	✓	✓		10

Note: A ✓ indicates that the course can be assigned under that broad topic domain in the application.

Updated 2023.09.14 v5

# Medical

Acronyms	Full Course Name of Standardized Course Equivalence	Note: You must have at least 10% of your total credits in pediatric content					
Medical							
AMLS	Advanced Medical Life Support	✓	✓	✓	✓	✓	16
EMPACT	Emergency Medical Patients: Assessment, Care and Transport	✓	✓	✓	✓	✓	16
ABLS	Advanced Burn Life Support	✓		✓	✓		7
ASLS	Advanced Stroke Life Support	✓	✓	✓	✓		8
ENLS	Emergency Neurological Life Support	✓	✓	✓	✓		15

**Note: A ✓ indicates that the course can be assigned under that broad topic domain in the application.**

Updated 2023.09.14 v5

# Special Populations

Acronyms	Full Course Name of Standardized Course Equivalence	Note: You must have at least 10% of your total credits in pediatric content					
Special Populations							
PALS	Pediatric Advanced Life Support	✓	✓		✓		12
APLS	Advanced Pediatric Life Support	✓	✓	✓	✓		14
PEARS	Pediatric Emergency, Recognition and Stabilization	✓	✓	✓	✓		8
NRP	Neonatal Resuscitation Program	✓	✓		✓		8
PEPP	Pediatric Education for Prehospital Professionals	✓	✓	✓	✓		12
EPC	Emergency Pediatric Course	✓	✓	✓	✓		16
GEMS	Geriatric Education for EMS	✓	✓	✓	✓		8

**Note: A ✓ indicates that the course can be assigned under that broad topic domain in the application.**

Updated 2023.09.14 v5

# Special Populations

Acronyms	Full Course Name of Standardized Course Equivalence	Note: You must have at least 10% of your total credits in pediatric content					
Trauma							
ITLS	International Trauma Life Support	✓	✓	✓	✓	✓	16
PHTLS	Prehospital Trauma Life Support	✓	✓	✓	✓	✓	16
TCCC	Tactical Casualty Combat Care	✓	✓	✓	✓	✓	N/A
	*Tactical Casualty Combat Care - MP (Military Personnel)	✓	✓	✓	✓	✓	16
	*Tactical Casualty Combat Care -CMC (Corpsman)	✓	✓	✓	✓	✓	63
	*Tactical Casualty Combat Care - CLS (Combat Lifesaver)	✓	✓	✓	✓	✓	40
	*Tactical Casualty Combat Care - ASM (All Service Members)	✓	✓	✓	✓	✓	7
TECC	Tactical Emergency Combat Care (Civilian)	✓	✓	✓	✓	✓	16
ATLS	Advanced Trauma Life Support	✓	✓	✓	✓	✓	16

**Note: A ✓ indicates that the course can be assigned under that broad topic domain in the application.**

Updated 2023.09.14 v5

# Operations

Acronyms	Full Course Name of Standardized Course Equivalence	Note: You must have at least 10% of your total credits in pediatric content					
Operations							
EMS Safety	EMS Safety					✓	8
EVOC	Emergency Vehicle Operator Course / Safety Course					✓	8
TIMS	Traffic Incident Management					✓	4
HAZMAT	HAZMAT				✓	✓	N/A
	*Hazardous Materials Technician				✓	✓	20
	*Hazardous Materials Operations				✓	✓	20
	*Hazardous Materials Awareness				✓	✓	8
	*All Hazards Disaster Life Support				✓	✓	8
BDLS	Basic Disaster Life Support			✓	✓	✓	7.5
ADLS	Advanced Disaster Life Support			✓	✓	✓	15
IS 100	An Introduction to the Incident Command System, ICS 100				✓	✓	2
IS 200	An Introduction to the National Incident Management System				✓	✓	4
IS 300	ICS 300: Intermediate Incident Command System for Expanding Incidents				✓	✓	21
IS 400	ICS 400: Advanced Incident Command System for Command and General Staff-Complex Incidents				✓	✓	15
IS 700	IS-700.B: An Introduction to the National Incident Management System				✓	✓	4
IS 800	IS-800.D: National Response Framework, An Introduction				✓	✓	3

**Note: A ✓ indicates that the course can be assigned under that broad topic domain in the application.**

Updated 2023.09.14 v5



ITLS	International
PHTLS	Prehospital
TCCC	Tactical C *Tactical
TECC	Tactical E
ATLS	Advanced
EMS Safety	EMS Safe
EVOC	Emergenc
TIMS	Traffic Inc
HAZMAT	* HAZMAT *Hazardou *Hazardou *Hazardou *All Haza
BDLS	Basic Dis
ADLS	Advanced
IS 100	An Introd
IS 200	An Introd
IS 300	ICS 300: I
IS 400	ICS 400: J
IS 700	IS-700.B:
IS 800	IS-800.D:

\* OEMS does not issue Co



own

Course Max. Credit
16
16
16
16
16
Course Max. Credit
8
8
4
20
20
8
8
7.5
15
2
4
21
15
4
3



# Approved by TCC and endorsed by MDC

Virginia Auxiliary Course CE Credit Breakdown														
(Alphabetical by Abbreviation/Acronym/Name)														
TOPIC	CREDIT HOURS (MAXIMUM)													
	ABLS	ACLS		ADLS	AHDR		AMLS		A P L S	ASLS		ATLS		BDLS
<b>Total Hours Awarded</b>	7	10	5	15	8		16	8	1 4	8	4	16	8	7.5
<b>NCCR (Category 1)</b>	Initial	Initial	Refresher	Initial	Initial		Initial	Refresher	Initial	Initial	Refresher	Initial	Refresher	Initial
<b>Airway, Respiration &amp; Ventilation</b>	1	2	1	-			3.5	1.5	-	1	0.5	2	1	-
<b>Pediatric</b>	1	-	-	-			-	-	2	-	-	1	0.5	-
<b>Cardiology</b>	-	5	2.5	-			3	1.5	-	2	1	2	1	-
<b>Pediatric</b>	-	-	-	-			-	-	5	-	-	-	-	-
<b>Trauma</b>	2	1	0.5	4			1.5	0.5	-	1	0.5	5	2.5	2
<b>Pediatric</b>	1	-	-	2			-	-	2	-	-	1	0.5	1
<b>Medical</b>	1.5	2	1	2	2		4.5	3	-	4	2	2	1	1
<b>Pediatric</b>	0.5	-	-	-	-		-	-	5	-	-	-	-	-
<b>Operations</b>	-	-	-	5	4		3.5	1.5	-	-	-	2	1	2.5
<b>Pediatric</b>	-	-	-	2	2		-	-	-	-	-	1	0.5	1

---

10%



# Active / Inactive CE Report



- Virginia EMS Portal
- Home
- My Cert Info
- My Courses
- Course Requests
- Application for Certification
- My Tests & Eligibility**
- My CE Files
- Miscellaneous

My Physician Portal | Office Of Ems

## Technician Certification Details

EMS, OFFICE OF - 1041 TECHNOLOGY PARK DRIVE, GLEN ALLEN, VA 23059 | Certification# E022976062 | Level EMT/P | Expiration Date 04/30/2024 | Email CE@BLOSSER.INFO | EC Certification# F000000870 | EC Expiration Date 12/31/2025

**My Agency Affiliations** Create Affiliation Request

No Agency Affiliations are available.

▶ Affiliation History

▶ Technician Special Status

▶ Technician Special Status History

### My Certification Card

Certification Card:

Click here to request a printed card from the Office of EMS. One request allowed per 365 days.

### My Continuing Education (CE) Reports

Submit Certification Application

Detailed CE Report:

Summary CE Report:

### My Enrolled Courses

Submit Course Enrollment Application

# Technician Certification Details

EMS, OFFICE OF - 1041 TECHNOLOGY PARK DRIVE, GLEN ALLEN, VA 23059 Certification# E022976062 Level EMT/P Expiration Date 04/30/2024 Email CE@BLOSSER.INFO EC Certification# F000000870 EC Expiration Date 12/31/2025

### My Agency Affiliations

No Agency Affiliations are available.

[Create Affiliation Request](#)

► Affiliation History

► Technician Special Status



► Technician Special Status History

### My Certification Card

Click here to request a printed card from the Office of EMS. One request allowed per 365 days.

### My Continuing Education (CE) Reports

[Submit Certification Application](#)

Detailed CE Report:  Summary CE Report: 

### My Enrolled Courses

[Submit Course Enrollment Application](#)



- Virginia EMS Portal
- Home
- My Cert Info
- My Courses
- Course Requests
- Application for Certification
- My Tests & Eligibility
  - Test Results
  - Eligibility Letters
  - EC Candidate
  - EC Recertification
  - EC Candidate Endorsement
  - Mentorship
  - Active/Inactive CE Report
- My CE Files
- Miscellaneous

My Physician Portal Office Of Ems

Active/Inactive CE Report  
**Active/Inactive Continuing Education**  **Run Report** Reset All

Begin Date 04/01/2022	End Date 03/31/2024
--------------------------	------------------------

## Virginia Department of Health Office of Emergency Medical Services

Cert# 022976062

Category	Area#	Course	Topic	Level	Class Date	Hours	Score	Scan Date	Active/Inactive
2	16	89617	23234 - FOAMFRAT: Capnography	E	04/18/2023	1		04/18/2023	Active
1	16	90568	25271 - NCCR - AIRWAY, RESPIRATION & VENTILATION	E	04/04/2023	1		04/04/2023	Active
1	16	90568	25272 - NCCR - AIRWAY, RESPIRATION & VENTILATION	E	04/04/2023	1		04/04/2023	Active
1	16	90568	25273 - NCCR - AIRWAY, RESPIRATION & VENTILATION	E	04/04/2023	1		04/04/2023	Active
1	16	90568	25274 - NCCR - AIRWAY, RESPIRATION & VENTILATION	E	04/04/2023	.5		04/04/2023	Active
1	17	90568	25281 - NCCR - CARDIOVASCULAR	E	04/04/2023	1		04/04/2023	Active
1	17	90568	25282 - NCCR - CARDIOVASCULAR	E	04/04/2023	1		04/04/2023	Active
1	17	90568	25283 - NCCR - CARDIOVASCULAR	E	04/04/2023	1		04/04/2023	Active
1	17	90568	25284 - NCCR - CARDIOVASCULAR	E	04/04/2023	1		04/04/2023	Active
1	17	90568	25285 - NCCR - CARDIOVASCULAR	E	04/04/2023	1		04/04/2023	Active
1	17	90568	25286 - NCCR - CARDIOVASCULAR	E	04/04/2023	1		04/04/2023	Active
1	17	90568	25287 - NCCR - CARDIOVASCULAR	E	04/04/2023	1		04/04/2023	Active
1	17	90568	25288 - NCCR - CARDIOVASCULAR	E	04/04/2023	1		04/04/2023	Active
1	17	90568	25289 - NCCR - CARDIOVASCULAR	E	04/04/2023	.5		04/04/2023	Active
1	18	90568	25301 - NCCR - TRAUMA	E	04/04/2023	1		04/04/2023	Active
1	18	90568	25302 - NCCR - TRAUMA	E	04/04/2023	1		04/04/2023	Active
1	18	90568	25303 - NCCR - TRAUMA	E	02/25/2021	1		06/27/2021	Inactive
1	19	90568	25311 - NCCR - MEDICAL	E	06/25/2021	1		06/27/2021	Inactive
1	19	90568	25312 - NCCR - MEDICAL	E	06/25/2021	1		06/26/2021	Inactive
1	19	90568	25313 - NCCR - MEDICAL	E	06/25/2021	1		06/26/2021	Inactive
1	19	90568	25314 - NCCR - MEDICAL	E	06/25/2021	1		06/27/2021	Inactive
1	19	90568	25315 - NCCR - MEDICAL	E	06/25/2021	1		06/27/2021	Inactive
1	19	90568	25316 - NCCR - MEDICAL	E	02/18/2021	1		02/30/2021	Inactive
1	19	90568	25317 - NCCR - MEDICAL	E	02/17/2021	1		02/30/2021	Inactive
1	19	90568	25318 - NCCR - MEDICAL	E	02/17/2021	1		02/30/2021	Inactive
1	19	90568	25319 - NCCR - MEDICAL	E	02/16/2021	.5		02/30/2021	Inactive
1	20	90568	25326 - NCCR - OPERATIONS	E	02/16/2021	1		02/30/2021	Inactive
1	20	90568	25327 - NCCR - OPERATIONS	E	02/16/2021	1		02/30/2021	Inactive
1	20	90568	25328 - NCCR - OPERATIONS	E	02/16/2021	1		02/30/2021	Inactive



# ALS Coordinator Re-endorsement

Complete [TR-31](#) – ALS Coordinator Application

Submit application to all Regional EMS Councils where you intend to hold courses

Obtain EMS Physician Signature if Regional EMS Council is not handling the physician signature endorsement

Submit to the ACE Division at a minimum a month before your expiration date

# Questions?

# Clinical Judgement Domain





# AEMT & Paramedic Exam Updates

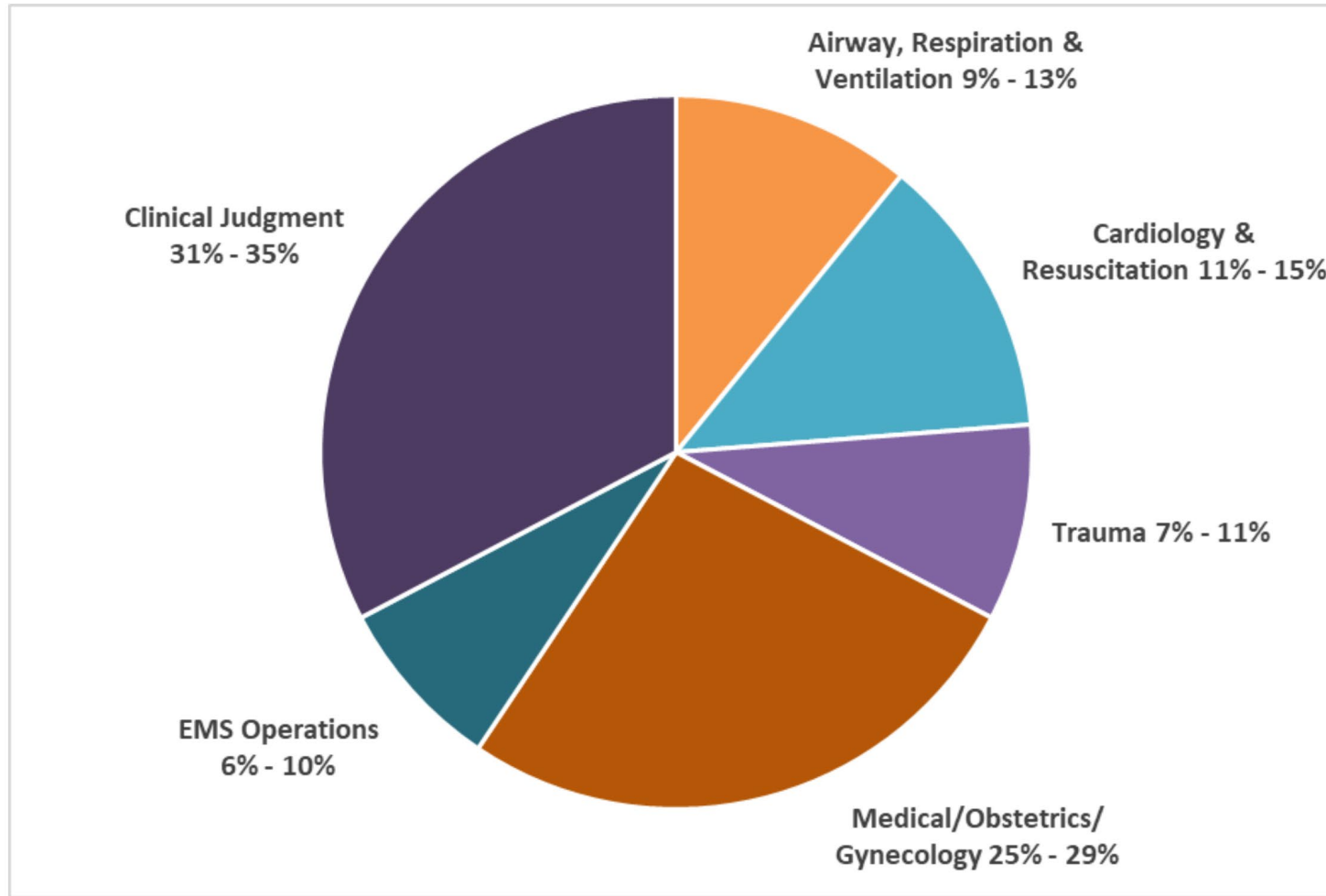


# Content for AEMT Exams

The 2019 National EMS Practice Analysis evaluated clinical impressions for the five areas, or “domains,” described above. These five domains are collectively referred to as the “cognitive domains”:

1. Airway, Respiration, & Ventilation
2. Cardiology & Resuscitation
3. Trauma
4. Medical, Obstetrics & Gynecology
5. EMS Operations

# Content Distribution for the AEMT





# Computer-Based Linear Testing

- ❑ The AEMT examination is administered as a fixed-length linear computer-based test (CBT).
- ❑ The same number of items are administered to all candidates, although the items are not identical.
- ❑ Candidates select their answer and can change it prior to advancing to the next item.
- ❑ After the answer is submitted, candidates are unable to return to the item to modify their answer.
- ❑ Candidates are encouraged to answer each item to the best of their ability before submitting their answer.
- ❑ All items left unanswered at the completion of the examination, which would only occur if the candidate does not complete the examination in the allotted time, are scored as incorrect.

# Advanced EMT Exam Details

## Examination Length

- The examination is administered in Pearson VUE testing centers.
- Consists of:
  - 100 scored items
  - 35 unscored pilot items
    - These items are included in the examination for purposes of collecting data to determine if the quality of the question meets the requirements to move forward.
- 3 hours

# Item Types

Certification Examination includes a variety of item types. All items are scored dichotomously; that is, candidates receive full credit for a correct response. No credit is provided for a partially correct response.

These item types are described below:

- **Multiple Choice:** Candidates must select one correct response out of four possible options.
- **Multiple Response:** Candidates must select two or three correct responses out of five or six possible options.
- **Build List:** Candidates must position several presented options into the order specified in the item instructions.

# Item Types (cont)

Additional item types include:

- **Drag-and-Drop:** Candidates must position several presented options into certain categories, classifications, or other identifiers as specified in the item instructions.
- **Options Box:** Candidates must classify, categorize, or identify several options presented in a table based on certain specified criteria.
- **Graphical:** Candidates must use information provided in graphical form to answer the item. Examples of the graphics presented include charts, capnography rhythm strips, images, and pictures. Graphics may be included in any of the above item types.
- **Scenario-Based:** Candidates answer multiple questions based on information contained in a “scenario” or reading passage. Scenario-based items may be any of the above types.

# Scenario Based Item

En Route

**Scene**

Post Scene

The patient (60 kilograms) is sitting awake in a dental suite. The patient says: "Just leave me alone now! Get away from me." The office staff states that the patient reported feeling weak upon arrival for the appointment, and then became confused. The patient had been instructed to start fasting at midnight for a dental procedure today.

The patient has a history of seizures, diabetes, hyperlipidemia, and recently, dental pain. Medications include insulin that is being administered by an automated external pump, carbamazepine, hydrocodone/acetaminophen, and atorvastatin. The patient has no allergies to medications.

The patient's skin is diaphoretic, and there are no signs of trauma. The patient obeys motor commands and moves all extremities. The patient cannot give their name, location, or the date. The eyes are open, and the pupils are 5 mm and reactive. Breath sounds are clear bilaterally. The vital signs are BP 156/90, P 124, R 10, SpO<sub>2</sub> 95% on room air, and T 98°F (37°C). The blood glucose level is 47 mg/dL. The EtCO<sub>2</sub> is 40 mmHg.

## Scene

Which of the following findings most strongly suggest a differential diagnosis of a diabetic emergency? Select the two answer options that are correct.

- A. End tidal carbon dioxide value
- B. Medical history
- C. Mental status
- D. Respiratory rate
- E. Pulse oximetry

# Drag and Drop

## Scene

Based on the patient findings, what is the most probable medical emergency, and what is the most appropriate treatment for that emergency? Move the most probable emergency into the **Answer Area**, and then move the most appropriate treatment into the **Answer Area**.

### Medical emergencies

Opioid overdose

Hypoglycemia

Hypoxia

### Treatments

Administering a dextrose solution

Administering intranasal naloxone

Administering high-flow oxygen

### Answer Area

Most probable medical emergency

Most appropriate treatment

# Build a List

## Post Scene

What conditions are likely to explain the patient's continued signs and symptoms despite appropriate treatment? Move each option into the **Answer Area** to order the conditions from the most likely to least likely explanations of the continued signs and symptoms.



### Options

Seizure

Diabetic emergency

Respiratory distress



### Answer Area

*Most likely (1) to least likely (3) explanations*





# Options Box

## Post Scene

Suppose the AEMT performs a reassessment. Which of the potential changes to the patient's presentation listed below would indicate that the patient's condition is improving, and which changes would indicate the patient's condition is worsening? Select two changes that would indicate that the condition is improving and select two changes that would indicate the condition is worsening.



## Answer Area

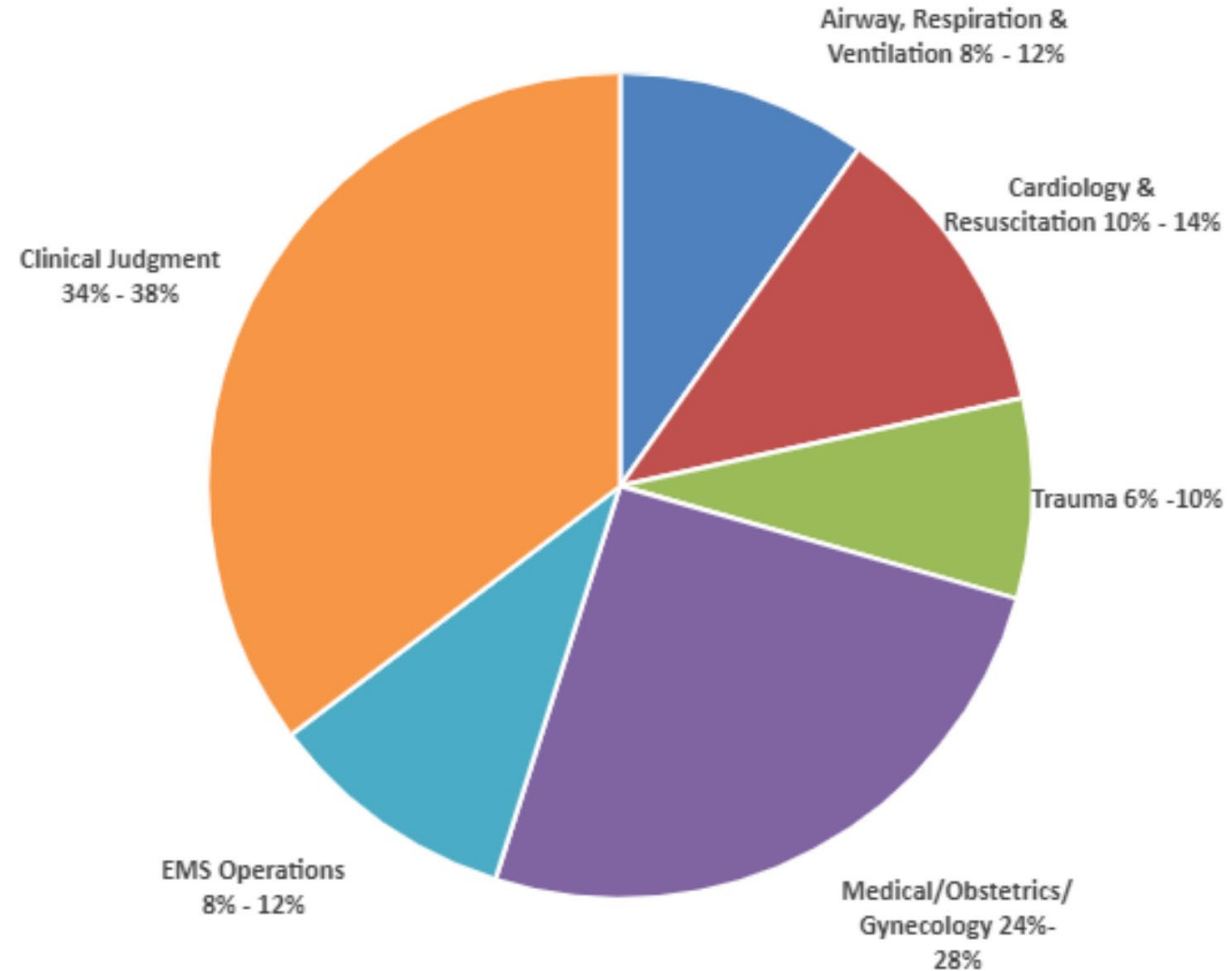
	<i>Condition improving (select 2 options only)</i>	<i>Condition worsening (select 2 options only)</i>
<i>Heart rate increases to 140</i>	<input type="radio"/>	<input type="radio"/>
<i>Patient starts to follow commands</i>	<input type="radio"/>	<input type="radio"/>
<i>Skin becomes dry</i>	<input type="radio"/>	<input type="radio"/>
<i>Tonic-clonic activity is observed</i>	<input type="radio"/>	<input type="radio"/>

# Content for Paramedic Exams

The 2019 National EMS Practice Analysis evaluated clinical impressions for the five areas, or “domains,” described above. These five domains are collectively referred to as the “cognitive domains”:

1. Airway, Respiration, & Ventilation
2. Cardiology & Resuscitation
3. Trauma
4. Medical, Obstetrics & Gynecology
5. EMS Operations

# Content Distribution for Paramedic



# Computerized Adaptive Testing

- ❑ **Computerized Adaptive Testing (CAT):**  
The Paramedic Certification Examination is administered through a CAT format.
- ❑ After an initial set of items, the computer will begin to administer items that are targeted at or above the candidate's estimated level of ability.
- ❑ Because the computer delivers items that are more aligned with the candidate's level of understanding, it can determine candidate proficiency in a fewer number of items in many cases.
- ❑ If the computer can make a pass/fail determination in the minimum number of items with 95% confidence, the test administration will end.
- ❑ **Examination Length:** Candidates have 3.5 hours to complete the Paramedic Certification Examination. The examination is administered in Pearson VUE testing centers. Candidates will be required to answer a minimum of 110 items.
- ❑ **Unscored Content:** The examination includes 20 unscored pilot items. These items are included in the examination for purposes of collecting data to determine if the quality of the question meets the requirements to move 6 forward on a future examination as a scored item. These items are not identified and will not affect a candidate's score.

# Paramedic Exam Details

## Examination Length

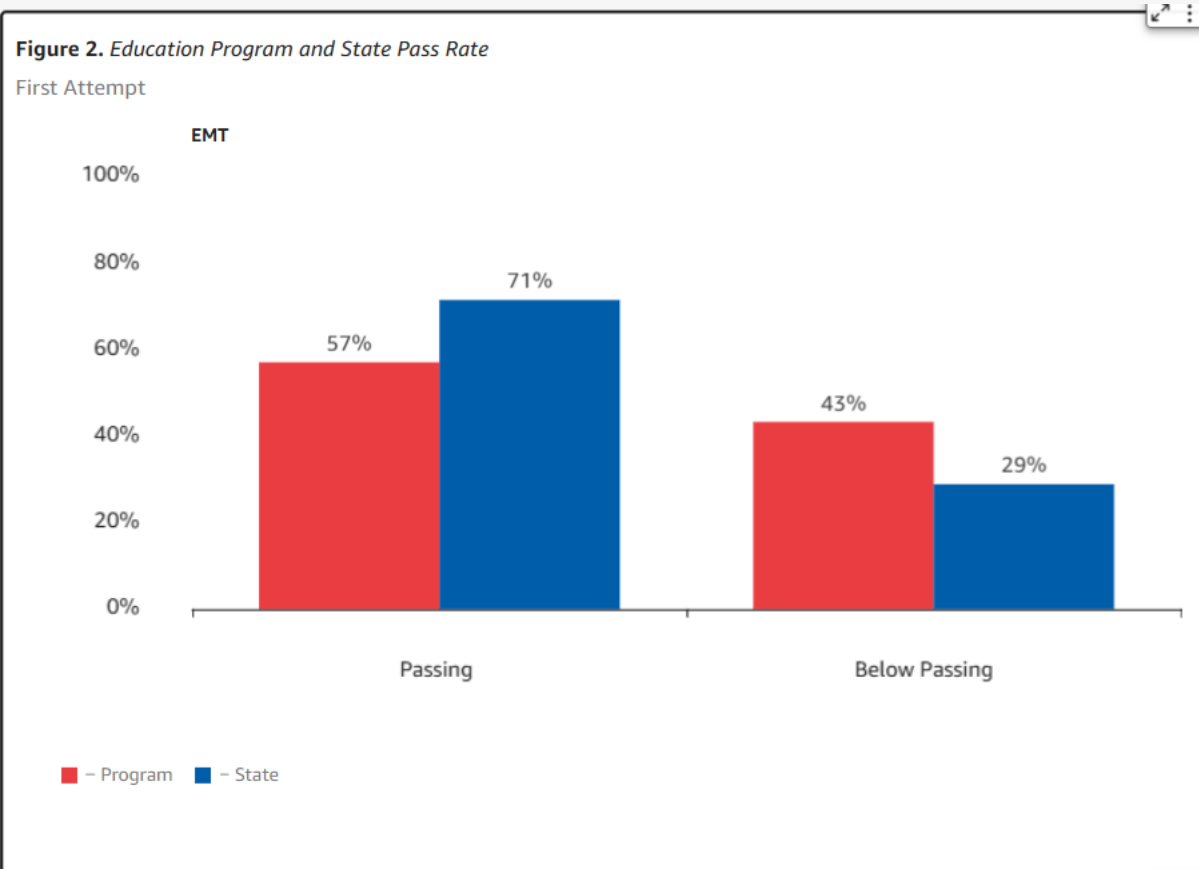
- The examination is administered in Pearson VUE testing centers.
- Consists of:
  - scored items
  - Minimum of 110 questions and maximum of 150
  - 20 unscored pilot items
    - These items are included in the examination for purposes of collecting data to determine if the quality of the question meets the requirements to move forward as a scored item.
- 3.5 hours

# The 16<sup>th</sup> Percentile

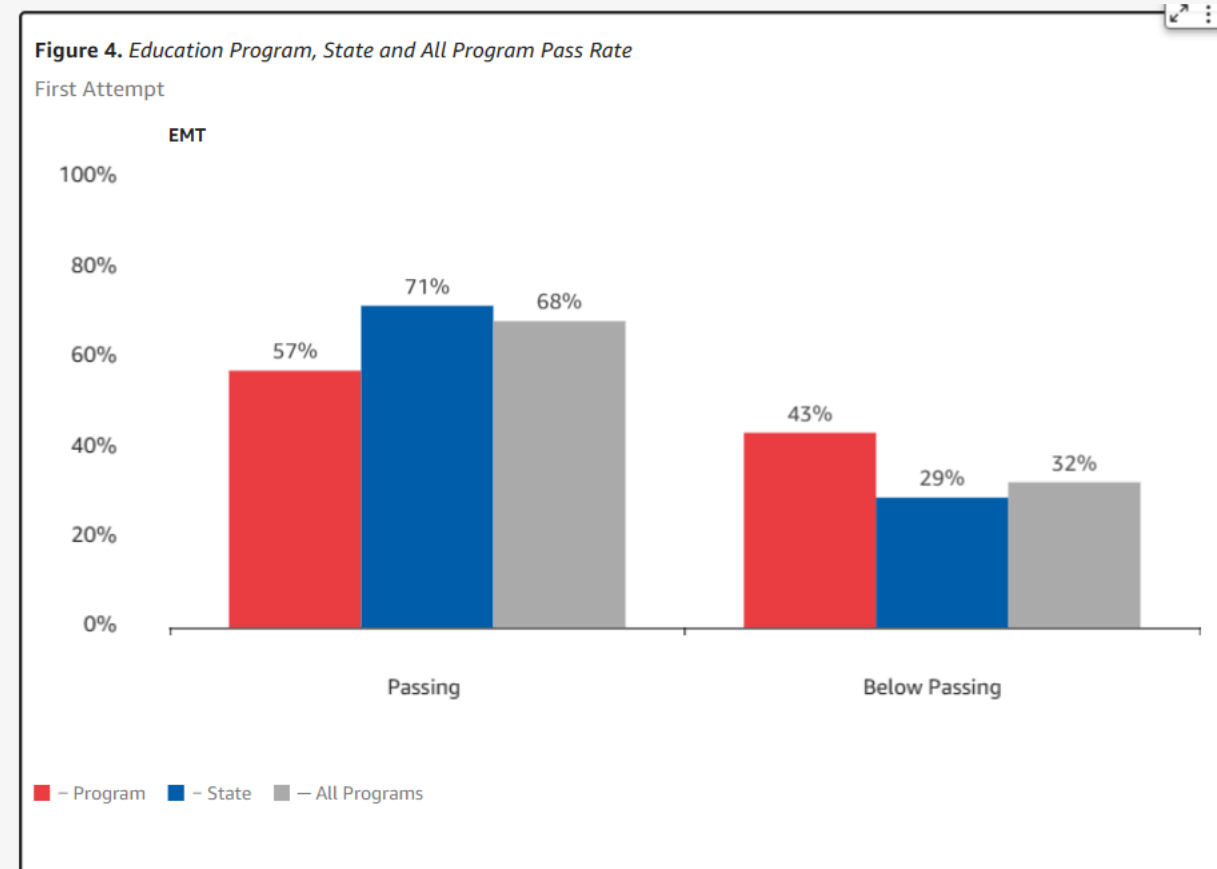


# First Attempt Pass Rate

## Program vs. State

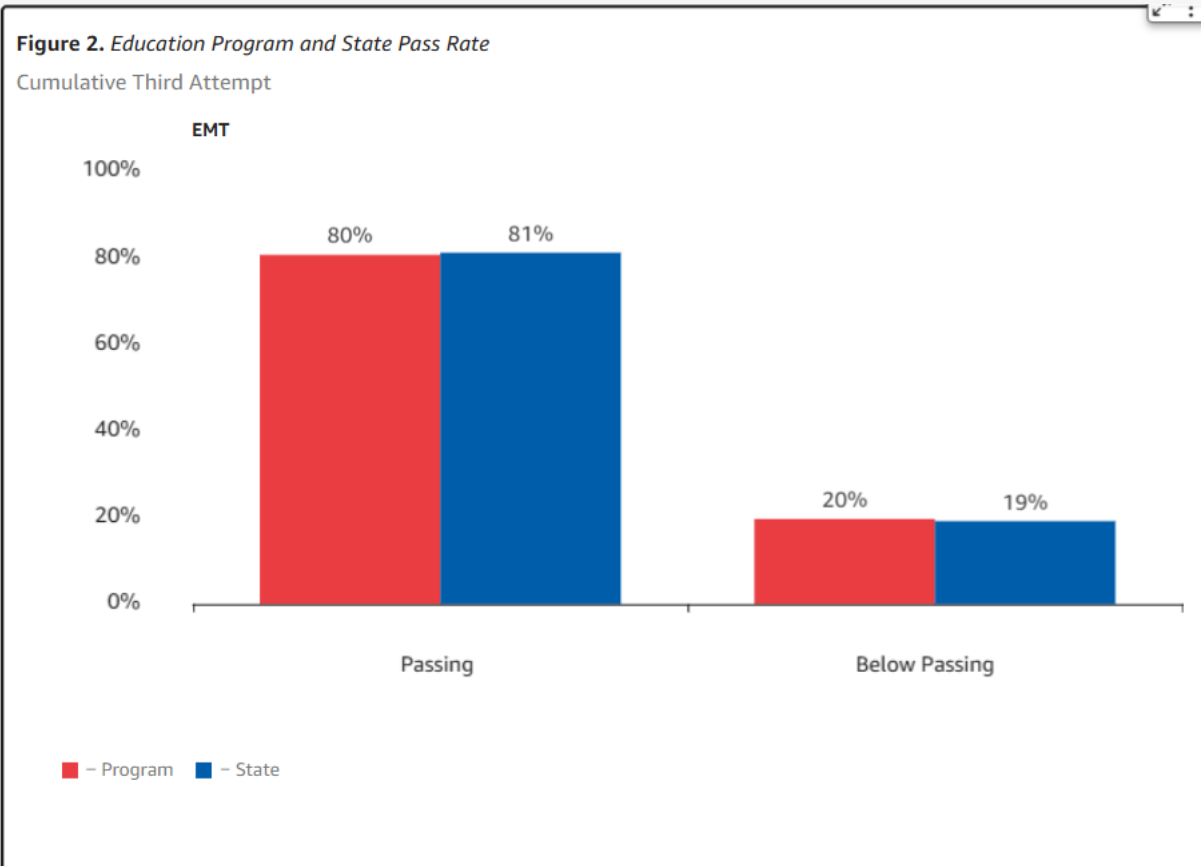


## Program vs. State vs. National

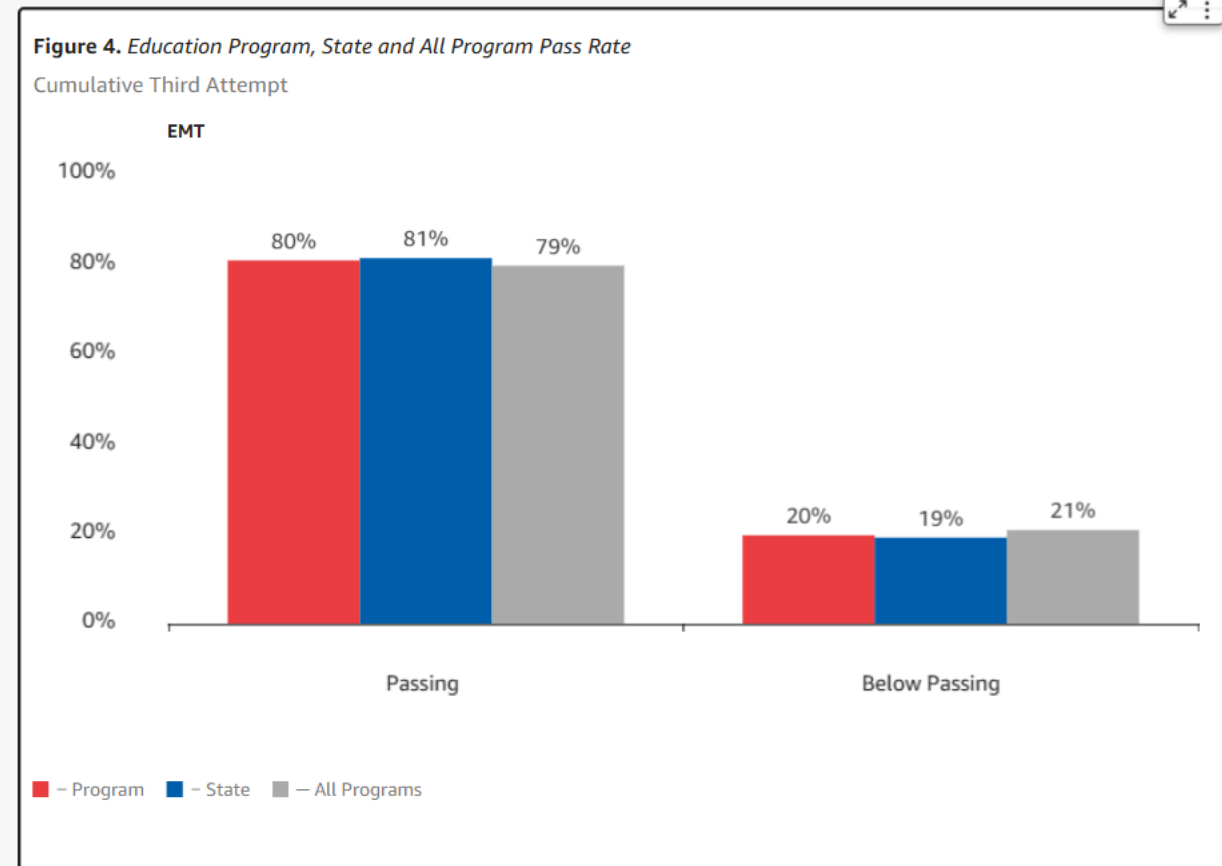


# Third Attempt Pass Rate

## Program vs. State



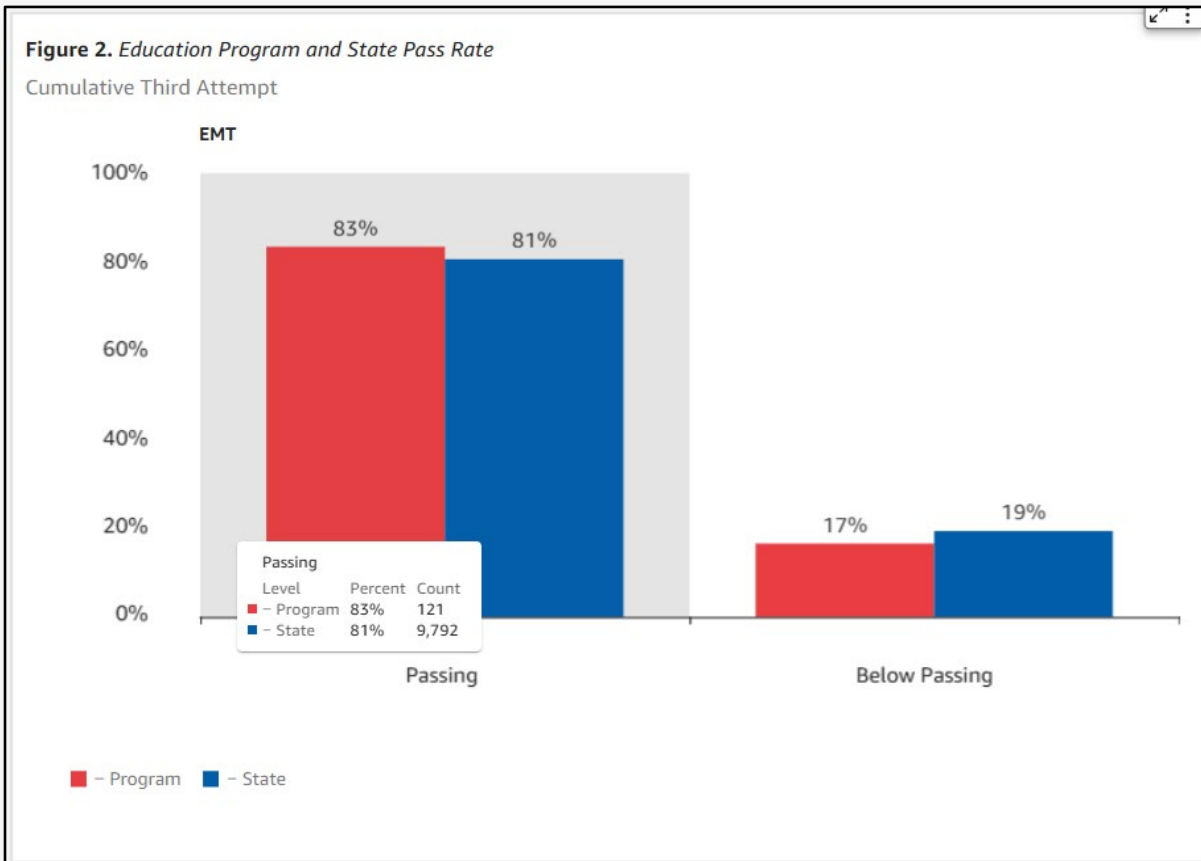
## Program vs. State vs. National



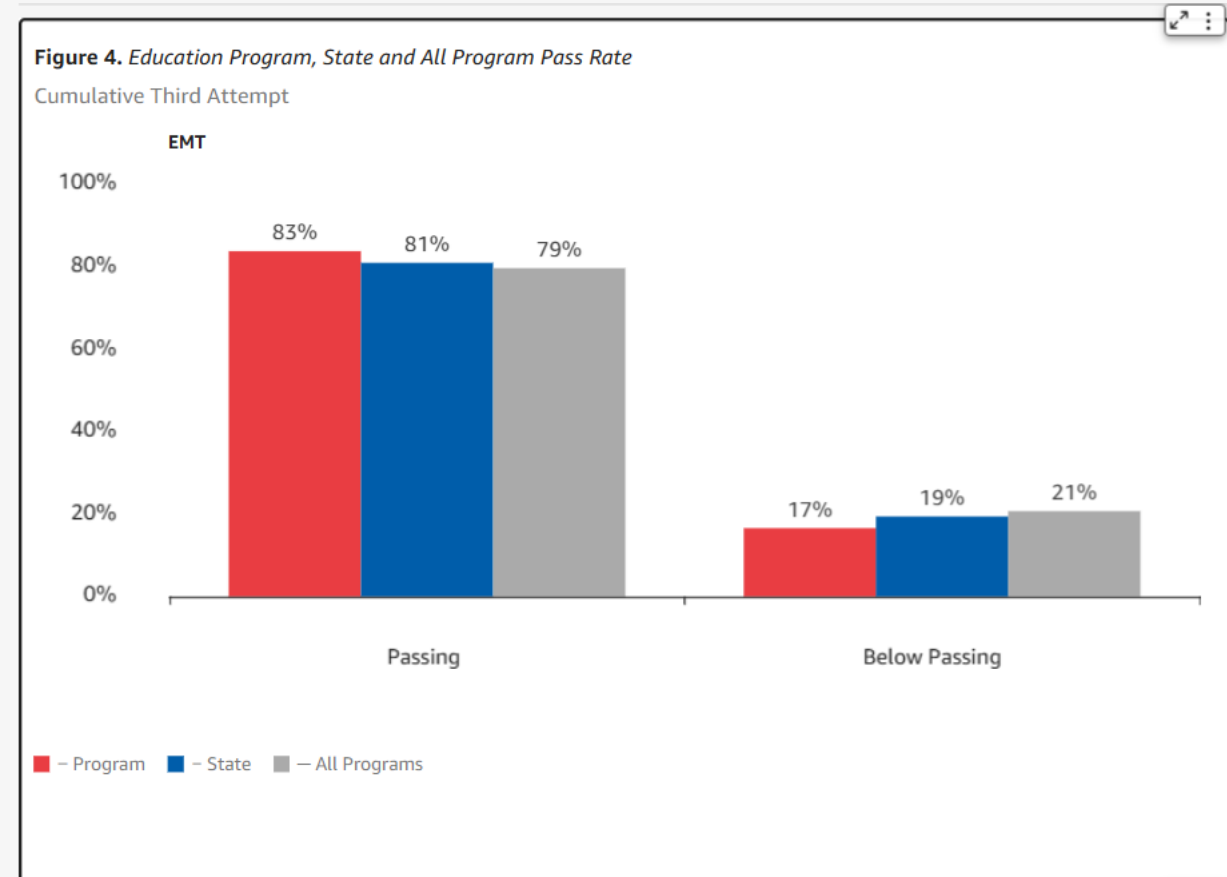


# 16% Percentile Measurement – 3 years, 3 attempts

## Program vs. State



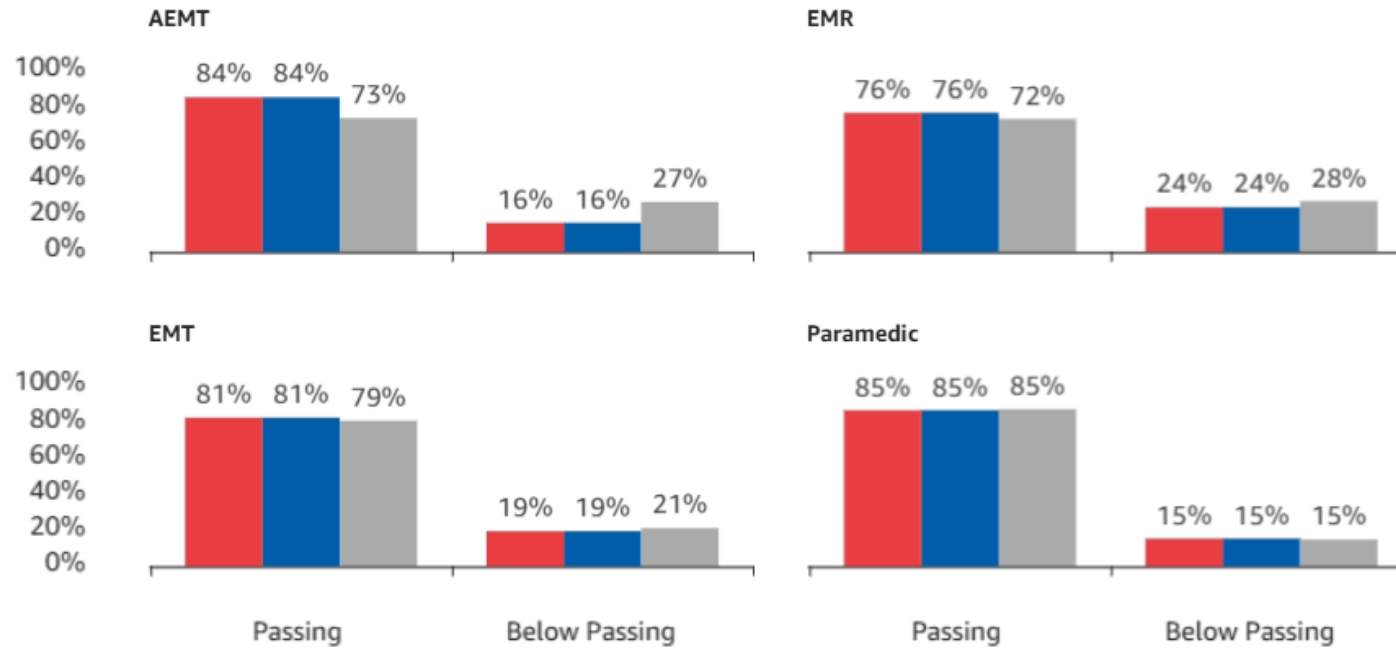
## Program vs. State vs. National



# Virginia's Pass Rates – CY23 Cumulative 3<sup>rd</sup> Attempt

**Figure 4. Education Program, State and All Program Pass Rate**

Cumulative Third Attempt



■ – Program ■ – State ■ – All Programs

## Pro tip!

If you want to ensure you never end up below the 16<sup>th</sup> percentile, then don't mark students as "Pass" if you are not confident in their ability to pass the National Registry cognitive exam.

**This is 100% under your control.**



# Approving Enrollment Applications



## 12VAC5-31-1431. Student course enrollment.

Over the past year, the ACE Division staff have experienced an increase in the number of EC's who either:

1. do not have have their students enroll in their initial certification programs, or,
2. who are not approving student enrollments in the EMS Portal per regulations.

Pending



✓ Approve  
Pending  
Deny

# Regulation in Question

## **12VAC5-31-1431. Student course enrollment.**

*For courses leading to certification at a new or higher level, the EMT instructor, ALS coordinator, or EMS education coordinator shall have each student complete a "Virginia EMS Training Program Enrollment" form at the first meeting of the course.*

- 1. These forms must be reviewed by the EMT instructor, ALS coordinator, or EMS education coordinator and submitted to the Office of EMS **no later than five business days following the first meeting of the course.***
- 2. Any student who starts the program at a later date shall complete an enrollment form the first date of attendance providing 15% or more of the entire course has not been completed.*

*Statutory Authority*

*§ § 32.1-12 and 32.1-111.4 of the Code of Virginia.*

# Policy Change

The following policy went into effect on January 1, 2024.

- Any student who has not submitted their enrollment application within five business days will be required to submit a variance requesting they be allowed to enroll in your course with a valid explanation as to why this was not completed within the required five business days.





## Request for Variance

The following policy is now in effect:

- Any student who has not submitted their enrollment application within five business days will be required to submit a variance requesting they be allowed to enroll in your course with a valid explanation as to why this was not completed within the required five business days.



# 30-days to Approve Enrollments

As of January 1, 2024, the only enrollments that may be accepted during business days 6-30 are those where the student was late enrolling in the course.

In this case, the Education Coordinator has five business days following the receipt of the late enrollment to accept the student into your class.

For anyone enrolling outside of the 30-day enrollment window, the Educator shall contact Debbie Akers to have the enrollment approved. Violations of this policy will result in an administrative action email from the ACE Division. Any further violations will result in an investigation by the Division of Regulation and Compliance.



# Marking BLS Students as Pass in the EMS Portal



# Marking Student Completions

We cannot place enough emphasis on the fact that you are:

- **REQUIRED** to have your students enroll in your initial certification courses, and;
- **REQUIRED** to mark your students' disposition at the end date of your course.



EMS Portal - Home

kobe.vdh.virginia.gov/emscopy/f?p=400:1:17500263402173::RP:TERMS\_FLAG:Y&cs=1dWR1...

Admin - Provider/... WordPress Login VDH Intranet - Re... Beta EMS Portal RGB to HEX Conv... Beta Enrollment P... GovDelivery Admi...

An Agency of the Commonwealth of Virginia Virginia.gov Find an Agency

# VDH VIRGINIA DEPARTMENT OF HEALTH

To protect the health and promote the well-being of all people in Virginia

## Virginia EMS Portal

Christopher Crookshanks

### Provider Details

See More >

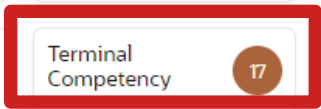
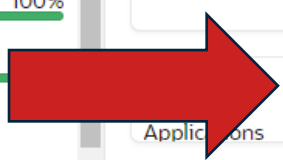
Certification#	E201302	Category 1 - 16-AIRWAY, RESPIRATION , VENTILATION	100%
Current Level	E-EMT/P	Category 1 - 17-CARDIOVASCULAR	100%
Expiration Date	10/31/20	Category 1 - 18-TRAUMA	100%
Certification Card		Category 1 - 19-MEDICAL	100%
CE Report		Category 1 - 20-OPERATIONS	100%
Agency Affiliations	1	Category 2 - APPROVED	0
Enrolled Courses	0		

### Education Coordinator Details

See More >

Certification Date	Expiration Date	Seminar Date	Exam Score
06/25/2022	06/30/2025		

Applications for Certification	0	Approved Candidate Endorsements	0	CE Errors	31
Hours Taught	51	My Courses	3	Pending Candidate Endorsements	0
Applications	0	Terminal Competency	17		



OEMS Release 4.7

# VDH VIRGINIA DEPARTMENT OF HEALTH

To protect the health and promote the well-being of all people in Virginia

- Virginia EMS Portal
- Home
- My Cert Info
- My Courses**
- Course Requests
- Appointments
- My Tests & Eligibility
- My CE Files

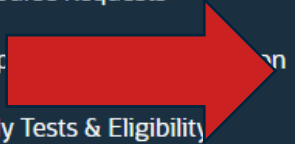
Christopher Crookshanks

Instructor Course Information | **Instructor Course Statistics Report** | **Late CE Submissions Report**

**CROOKSHANKS, CHRISTOPHER A** - 450 N. HOUSTON ST., GLEN ALLEN, VA 23059 | Certification# E201302592 | Level EMT/P

Expiration Date 10/31/2024 | Email TEST@MAIL.COM

89446	0	EMERGENCY MEDICAL TECHNICIAN	01/14/2023	04/25/2023	\$						
89429	0	EMERGENCY MEDICAL TECHNICIAN	01/23/2023	04/26/2023	\$						
89230	10	EMERGENCY MEDICAL TECHNICIAN	01/10/2023	04/27/2023	\$						
87927	0	EMERGENCY MEDICAL TECHNICIAN	06/01/2023	08/19/2023	\$						



- Virginia EMS Portal
- Christopher Crookshanks
- Home
- My Cert Info
- My Courses**
- Course Requests
- Application for Certification
- My Tests & Eligibility
- My CE Files

Instructor Course Information **Instructor Course Statistics Report** **Late CE Submissions Report**

**CROOKSHANKS, CHRISTOPHER A** - 450 N. HOUSTON ST., GLEN ALLEN, VA 23059 Certification# E201302592 Level EMT/P

Expiration Date 10/31/2024 Email TEST@MAIL.COM

89446	0	EMERGENCY MEDICAL TECHNICIAN	01/14/2023	04/25/2023	\$	📄	📄	📄	📄	📄	📄
89429	0	EMERGENCY MEDICAL TECHNICIAN	01/23/2023	04/26/2023	\$	📄	📄	📄	📄	📄	📄
89230	10	EMERGENCY MEDICAL TECHNICIAN	01/10/2023	04/27/2023	\$	📄	📄	📄	📄	📄	📄
87927	0	EMERGENCY MEDICAL TECHNICIAN	06/01/2023	08/19/2023	\$	📄	📄	📄	📄	📄	📄



**Virginia EMS Portal**

- Home
- Cert Info
- My Courses
- Course Requests
- Application for Certification
- My Tests & Eligibility
- My CE Files

Christopher Crookshanks

## Terminal Competency

Cancel Apply Changes

Course Information **Step 1: Applications** Step 2: Terminal Competency Step 3: Student Disposition

### Terminal Competency

Search: All Text Columns Go Actions Edit

<input type="checkbox"/>		Cert No	Last Nam	First Nam	Mi	Level	Exam Dat	Result	Result Da	Status	Approval	Final Status
<input checked="" type="checkbox"/>		B20...	RUS...	BOB...	D							
<input type="checkbox"/>		B20...	MER...	KA...								
<input type="checkbox"/>		B20...	JEN...	PHIL...	D							
<input type="checkbox"/>		B091...	AYE...	ELIZ...	N	B						
<input type="checkbox"/>		B20...	MASH...	TUD...	1							

1 rows selected Total 10

Terminal Competency

kobe.vdh.virginia.gov/emscopy/f?p=163:73:30293329632421:::

Admin - Provider/... WordPress Login VDH Intranet - Re... Beta EMS Portal RGB to HEX Conv... Beta Enrollment P... GovDelivery Admi...

An Agency of the Commonwealth of Virginia Virginia.gov Find an Agency

# VDH VIRGINIA DEPARTMENT OF HEALTH

To protect the health and promote the well-being of all people in Virginia

Virginia EMS Portal Christopher Crookshanks

## Terminal Competency

Cancel Apply Changes

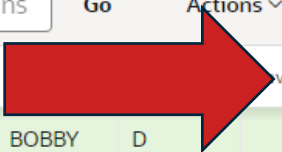
Course Information **Step 1: Applications** Step 2: Terminal Competency Step 3: Student Disposition

### Terminal Competency

Search: All Text Columns Go Actions Edit

<input type="checkbox"/>	<input type="checkbox"/>	Cert No	Last Name	Level	Exam Date	Result	Result Date..	Status	Approval Dat	Final Status
<input checked="" type="checkbox"/>	<input type="checkbox"/>	B2022...	RUSSELL	BOBBY	D					
<input type="checkbox"/>	<input type="checkbox"/>	B2023...	MERED...	KAMDYN						
<input type="checkbox"/>	<input type="checkbox"/>	B2022...	JENKINS	PHILLIP	D					
<input type="checkbox"/>	<input type="checkbox"/>	B09147...	AYERS...	ELIZAB...	N	B				
<input type="checkbox"/>	<input type="checkbox"/>	B2022...	MASH	THOMAS	1					

1 rows selected Total 10





Terminal Competency

kobe.vdh.virginia.gov/emscopy/f?p=163:73:30293329632421:...

Admin - Provider/... WordPress Login VDH Intranet - Re... Beta EMS Portal RGB to HEX Conv... Beta Enrollment P... GovDelivery Admi...

An Agency of the Commonwealth of Virginia Virginia.gov Find an Agency

# VDH VIRGINIA DEPARTMENT OF HEALTH

To protect the health and promote the well-being of all people in Virgin

## Virginia EMS Portal

### Terminal Competency

Course Information **Step 1: Applications** Step 3: Student Disposition

Christopher Crookshanks

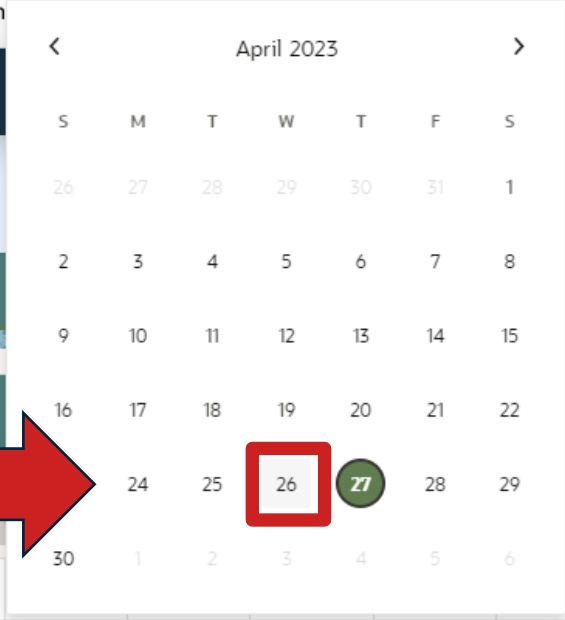
Cancel Apply Changes

Terminal Competency

Search: All Text Columns Go

<input type="checkbox"/>	≡	Cert No	Last Name	First Name	Mi	Level	Final Date	Final Status
<input checked="" type="checkbox"/>	≡	B2022...	RUSSELL	BOBBY	D			
<input type="checkbox"/>	≡	B2023...	MERED...	KAMDYN				
<input type="checkbox"/>	≡	B2022...	JENKINS	PHILLIP	D			
<input type="checkbox"/>	≡	B09147...	AYERS...	ELIZAB...	N	B		
<input type="checkbox"/>	≡	B2022...	NASH	THOMAS				

Total 10



Calendar overlay for April 2023. The date 26 is highlighted with a red square, and the date 27 is circled in green. A red arrow points from the 26th in the calendar to the corresponding row in the table below.

Terminal Competency

kobe.vdh.virginia.gov/emscopy/f?p=163:73:30293329632421:.....

Admin - Provider/... WordPress Login VDH Intranet - Re... Beta EMS Portal RGB to HEX Conv... Beta Enrollment P... GovDelivery Admi...

An Agency of the Commonwealth of Virginia [Virginia.gov](#) [Find an Agency](#)

# VDH VIRGINIA DEPARTMENT OF HEALTH

To protect the health and promote the well-being of all people in Virginia

Virginia EMS Portal Christopher Crookshanks

## Terminal Competency

Cancel Apply Changes

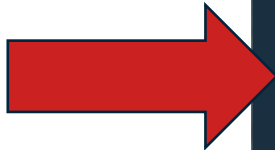
Course Information **Step 1: Applications** Step 2: Terminal Competency Step 3: Student Disposition

### Terminal Competency

Search: All Text Columns Go Actions Edit

<input type="checkbox"/>	Cert No	Last Name	First Name	Mi	Level	Exam Date	Result	Result Date..	Status	Approval Dat	Final Status
<input checked="" type="checkbox"/>	B2022...	RUSSELL	BOBBY	D		04/26/...					
<input type="checkbox"/>	B2023...	MERED...	KAMDYN								
<input type="checkbox"/>	B2022...	JENKINS	PHILLIP	D							
<input type="checkbox"/>	B09147...	AYERS...	ELIZAB...	N	B						
<input type="checkbox"/>	B2022...	NASH	THOMAS	1							

1 rows selected Total 10



Terminal Competency

kobe.vdh.virginia.gov/emscopy/?p=163:73:30293329632421:....

Admin - Provider/... WordPress Login VDH Intranet - Re... Beta EMS Portal RGB to HEX Conv... Beta Enrollment P... GovDelivery Admi...

An Agency of the Commonwealth of Virginia Virginia.gov Find an Agency

# VDH VIRGINIA DEPARTMENT OF HEALTH

To protect the health and promote the well-being of all people in Virginia

Christopher Crookshanks

Cancel Apply Changes

Step 2: Terminal Competency Step 3: Student Disposition

Copy to Clipboard Ctrl+C

Refresh Rows

Revert Changes

Copy Down

Fill

Clear

<input checked="" type="checkbox"/>	⋮	Cert No	Last Name	First Name	Mi	Level	Exam Date	Result	Result Date..	Status	Approval Dat	Final Status
<input checked="" type="checkbox"/>	⋮	B2022...	RUSSELL	BOBBY	D		04/26/...					
<input checked="" type="checkbox"/>	⋮	B2023...	MERED...	KAMDYN								
<input checked="" type="checkbox"/>	⋮	B2022...	JENKINS	PHILLIP	D							
<input checked="" type="checkbox"/>	⋮	B09147...	AYERS...	ELIZAB...	N	B						
<input checked="" type="checkbox"/>	⋮	B2022...	NASH	THOMAS								

10 rows selected Total 10



Terminal Competency

kobe.vdh.virginia.gov/emscopy/f?p=163:73:30293329632421:...

Admin - Provider/... WordPress Login VDH Intranet - Re... Beta EMS Portal RGB to HEX Conv... Beta Enrollment P... GovDelivery Admi...

An Agency of the Commonwealth of Virginia Virginia.gov Find an Agency

# VDH VIRGINIA DEPARTMENT OF HEALTH

To protect the health and promote the well-being of all people in Virginia

Virginia EMS Portal Christopher Crookshanks

## Terminal Competency

Cancel Apply Changes

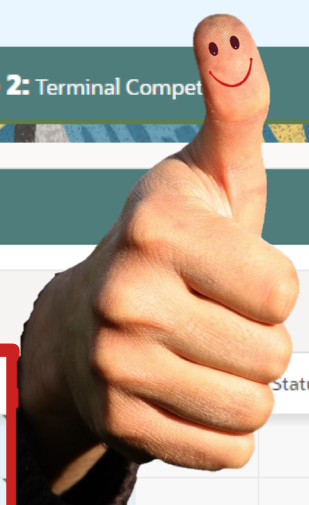
Course Information **Step 1: Applications** Step 2: Terminal Competency Step 3: Student Disposition

### Terminal Competency

Search: All Text Columns Go Actions Edit

<input type="checkbox"/>	<input type="checkbox"/>	Cert No	Last Name	First Name	Mi	Level	Exam Date	Status	Approval Date	Final Status
<input checked="" type="checkbox"/>	<input type="checkbox"/>	B2022...	RUSSELL	BOBBY	D		04/26/...			
<input checked="" type="checkbox"/>	<input type="checkbox"/>	B2023...	RUSSELL	BOBBY	D		04/26/...			
<input checked="" type="checkbox"/>	<input type="checkbox"/>	B2022...	RUSSELL	BOBBY	D		04/26/...			
<input checked="" type="checkbox"/>	<input type="checkbox"/>	B09147...	RUSSELL	BOBBY	D	B	04/26/...			
<input checked="" type="checkbox"/>	<input type="checkbox"/>	B2022...	RUSSELL	BOBBY	D		04/26/...			

10 rows selected Total 10



Terminal Competency

kobe.vdh.virginia.gov/emscopy/f?p=163:73:30293329632421:...

An Agency of the Commonwealth of Virginia

**VDH VIRGINIA DEPARTMENT OF HEALTH**  
To protect the health and promote the well-being of all people in Virginia

Virginia EMS Portal Christopher Crookshanks

Terminal Competency

Cancel Apply Changes

Course Information **Step 1: Applications** Step 2: Terminal **Step 3: Student Disposition**

Terminal Competency

Search: All Text Columns Go Actions Edit

<input type="checkbox"/>	<input type="checkbox"/>	Cert No	Last Name	First Name	Mi	Level	Exam Date	Result	Result Date..	Status	Approval Date	Final Status
<input checked="" type="checkbox"/>	<input type="checkbox"/>	B2022...	RUSSELL	BOBBY	D		04/26/...	Pass				
<input checked="" type="checkbox"/>	<input type="checkbox"/>	B2023...	RUSSELL	BOBBY	D		04/26/...	Pass				
<input checked="" type="checkbox"/>	<input type="checkbox"/>	B2022...	RUSSELL	BOBBY	D		04/26/...	Fail				
<input checked="" type="checkbox"/>	<input type="checkbox"/>	B09147...	RUSSELL	BOBBY	D	B	04/26/...	Pass				
<input checked="" type="checkbox"/>	<input type="checkbox"/>	B2022...	RUSSELL	BOBBY	D		04/26/...	Pass				

10 rows selected Total 10

Terminal Competency

kobe.vdh.virginia.gov/emscopy/f?p=163:73:30293329632421:.....

An Agency of the Commonwealth of Virginia

**VDH VIRGINIA DEPARTMENT OF HEALTH**  
To protect the health and promote the well-being of all people in Virginia

Virginia EMS Portal Christopher Crookshanks

Cancel Apply Changes

Step 2: Terminal Competency **Step 3: Student Disposition**

What's Next?

Actions	Edit	Cert No	Last Name	First Name	Mi	Level	Exam Date	Result	Result Date..	Status	Approval Date	Final Status
<input checked="" type="checkbox"/>		B2022...	RUSSELL	BOBBY	D		04/26/...	Pass				
<input checked="" type="checkbox"/>		B2023...	RUSSELL	BOBBY	D		04/26/...	Pass				
<input checked="" type="checkbox"/>		B2022...	RUSSELL	BOBBY	D		04/26/...	Fail				
<input checked="" type="checkbox"/>		B09147...	RUSSELL	BOBBY	D	B	04/26/...	Pass				
<input checked="" type="checkbox"/>		B2022...	RUSSELL	BOBBY	D		04/26/...	Pass				

10 rows selected Total 10





**Once this guy or gal confirms competency and marks your students, you have more to do!**

CourseInfo x +

kobe.vdh.virginia.gov/emscopy/f?p=163:11:14096428250620:...

Admin - Provider/... WordPress Login VDH Intranet - Re... Beta EMS Portal RGB to HEX Conv... Beta Enrollment P... GovDelivery Admi...

An Agency of the Commonwealth of Virginia Virginia.gov Find an Agency

**VDH VIRGINIA DEPARTMENT OF HEALTH**  
To protect the health and promote the well-being of all people in Virginia


Virginia EMS Portal Christopher Crookshanks

### Course Completion and Enrollment

Cancel Apply Changes

CROOKSHANKS, CHRISTOPHER A - 450 N. HOUSTON ST., GLEN ALLEN, VA 23059 Certification# E201302592 Level EMT/P Expiration Date 10/31/2024

Email TEST@MAIL.COM

Course Information **Step 1: Applications** Step 2:  **Step 3: Student Disposition**

#### Student Disposition

Search: All Text Columns Go Primary Report Actions Edit Reset

<input type="checkbox"/>	<input type="checkbox"/>	Certification#	Last Name	First Name	MI	Level	Exp Date	Enrolled Date	Competency Completed?	Result	Completion Date
<input type="checkbox"/>	<input type="checkbox"/>	B202104217	Sloane	William	H			01/16/2023	No	Incomplete	
<input type="checkbox"/>	<input type="checkbox"/>	B202201169	Nash	Thomas	J			01/17/2023	Yes	Pass	
<input type="checkbox"/>	<input type="checkbox"/>	B202201170	Russell	Bobby	D			01/12/2023	Yes	Pass	

1 rows selected Total 10



CourseInfo x +

kobe.vdh.virginia.gov/emscopy/?p=163:11:14096428250620:....

Admin - Provider/... WordPress Login VDH Intranet - Re... Beta EMS Portal RGB to HEX Conv... Beta Enrollment P... GovDelivery Admi...

An Agency of the Commonwealth of Virginia Virginia.gov Find an Agency

# VDH VIRGINIA DEPARTMENT OF HEALTH

To protect the health and promote the well-being of all people in Virginia

## Virginia EMS Portal

Christopher Crookshanks

### Course Completion and Enrollment

Cancel Apply Changes

CROOKSHANKS, CHRISTOPHER A - 450 N. HOUSTON ST., GLEN ALLEN, VA 23059 Certification# E201302592 Level EMT/P Expiration Date 10/31/2024

Email TEST@MAIL.COM

Course Information **Step 1: Applications** Step 2: Terminal Competency Step 3: Student Disposition

#### Student Disposition

Search: All Text Columns Go Primary Report Actions Edit Reset

<input type="checkbox"/>	≡	Certification#	Last Name	First Name	MI	Level	Exp Date	Enrolled Date	Competency Completed?	Result	Completion Dat
<input checked="" type="checkbox"/>	≡	B202104217	Sloane	William	H						
<input type="checkbox"/>	≡	B202201169	Nash	Thomas	J			01/17/2023	Yes		
<input type="checkbox"/>	≡	B202201170	Russell	Bobby	D			01/12/2023	Yes		

1 rows selected Total 10

CourseInfo x +

← → ↻ 🔒 kobe.vdh.virginia.gov/emscopy/f?p=163:11:14096428250620:.....

Admin - Provider/... WordPress Login VDH Intranet - Re... Beta EMS Portal RGB to HEX Conv... Beta Enrollment P... GovDelivery Admi...

An Agency of the Commonwealth of Virginia Virginia.gov Find an Agency

# VDH VIRGINIA DEPARTMENT OF HEALTH

To protect the health and promote the well-being of all people in Virginia

## Virginia EMS Portal

Christopher Crookshanks

### Course Completion and Enrollment

Cancel Apply Changes

CROOKSHANKS, CHRISTOPHER A - 450 N. HOUSTON ST., GLEN ALLEN, VA 23059 Certification# E201302592 Level EMT/P Expiration Date 10/31/2024

Email TEST@MAIL.COM

Course Information **Step 1: Applications** Step 2: Terminal Competency Step 3: Student Disposition

#### Student Disposition

Search: All Text Columns Go Primary Report Actions Edit Reset

<input type="checkbox"/>	<input type="checkbox"/>	Certification#	Last Name	First Name	MI	Level	Exp Date	Enrollment	Completed?	Result	Completion Date
<input type="checkbox"/>	<input type="checkbox"/>	B202104217	Sloane	William	H			01/16/2023	No	Incomplete	
<input type="checkbox"/>	<input type="checkbox"/>	B202201169	Nash	Thomas	J			01/17/2023	Yes	Pass	
<input type="checkbox"/>	<input type="checkbox"/>	B202201170	Russell	Bobby	D			01/12/2023	Yes	Pass	

1 rows selected Total 10

CourseInfo x +

kobe.vdh.virginia.gov/emscopy/f?p=163:11:14096428250620:...

Admin - Provider/... WordPress Login VDH Intranet - Re... Beta EMS Portal RGB to HEX Conv... Beta Enrollment P... GovDelivery Admi...

An Agency of the Commonwealth of Virginia Virginia.gov Find an Agency

**VDH VIRGINIA DEPARTMENT OF HEALTH**  
To protect the health and promote the well-being of all people in Virginia

Virginia EMS Portal Christopher Crookshanks

## Course Completion and Enrollment

CROOKSHANKS, CHRISTOPHER A - 450 N. HOUSTON ST., GLEN ALLEN, VA 23059 Certification# E201302592 Level EMT/ Expiration Date 10/31/2024

Email TEST@MAIL.COM

Course Information **Step 1: Applications** Step 2: Terminal Competency Step 3: Student Disposition

Cancel **Apply Changes**

### Student Disposition

Search: All Text Columns Go Primary Report Actions Edit Reset

<input type="checkbox"/>	≡	Certification#	Last Name	First Name	MI	Level	Exp Date	Enrolled Date	Competency Completed?	Result	Completion Dat
<input checked="" type="checkbox"/>	≡	B202104217	Sloane	William	H			01/16/2023	No	Incomplete	04/27/2023
<input type="checkbox"/>	≡	B202201169	Nash	Thomas	J			01/17/2023	Yes	Pass	04/27/2023
<input type="checkbox"/>	≡	B202201170	Russell	Bobby	D			01/12/2023	Yes	Pass	04/27/2023

1 rows selected Total 10

# Marking Course Completions



**National Registry of  
Emergency Medical Technicians®**  
THE NATION'S EMS CERTIFICATION™

# Students on Field Rotations

- <https://www.vdh.virginia.gov/content/uploads/sites/23/2022/02/EMS-Student-Eligibility-in-Virginia-2-10-22.pdf>
- 12VAC5-31-1170 – Provision of care by students
- 12VAC5-31-1423 – Course Announcement Requirements
- Violation of this policy may result in:
  - Individual being subject to enforcement action for practicing above their scope of practice
  - Agency being subject to enforcement action

# Questions?

# Maintaining Your Education Coordinator

Maintain provider certification

Teach a *minimum* of 50 hours per certification cycle (3 years)

Attend a *minimum* of 1 update per certification cycle (3 years)

Re-endorsement by EMS Physician (online) (valid for 180 days)

Complete recertification quiz (online)

- *If it expires – re-entry is 2 years*
- Certification is not tied to provider expiration



**THANK YOU**

A yellow speech bubble with rounded corners and a tail pointing towards the bottom right. The words "THANK YOU" are cut out of the bubble in a bold, blue, sans-serif font. The background is a solid, textured blue.