

Trauma in Virginia

Designated Trauma Centers

EXPLANATION OF DATA

There are **14** designated trauma centers in Virginia, of which, at the completion of this report, 13 were submitting data to the Virginia Statewide Trauma Registry. A trauma center's designation is defined by the following criteria:

Level I

Level I trauma centers have an organized trauma response and are required to provide total care for every aspect of injury, from prevention through rehabilitation. These facilities must have adequate depth of resources and personnel with the capability of providing leadership, education, research and system planning.

Level II

Level II trauma centers have an organized trauma response and are also expected to provide initial definitive care, regardless of the severity of injury. The specialty requirements may be fulfilled by on call staff, that are promptly available to the patient. Due to some limited resources, Level II centers may have to transfer more complex injuries to a Level I center. Level II centers should also take on responsibility for education and system leadership within their region.

Level III

Level III centers, through an organized trauma response, can provide prompt assessment, resuscitation, stabilization, emergency operations and also arrange for the transfer of the patient to a facility that can provide definitive trauma care. Level III centers should also take on responsibility for education and system leadership within their region.

Level I Trauma Centers

- **Carilion Roanoke Memorial Hospital**
Bellevue @ Jefferson Streets, Roanoke
- **Inova Fairfax Hospital**
3300 Gallows Road, Falls Church
- **Sentara Norfolk General Hospital**
600 Gresham Drive, Norfolk
- **UVA Medical Center**
1224 West Main Street, Charlottesville
- **VCU Medical Center**
2nd & Marshall Streets, Richmond

Level II Trauma Centers

- **Lynchburg General Hospital**
1901 Tate Springs Road, Lynchburg
- **Riverside Regional Medical Center**
500 J. Clyde Morris Boulevard,
Newport News
- **Winchester Medical Center**
1840 Amherst Street, Winchester

Level III Trauma Centers

- **Carilion New River Valley Medical Center**
2900 Lamb Circle, Christiansburg
- **CJW Medical Center, Chippenham**
7101 Jahnke Road, Richmond
- **CJW Medical Center, Johnston-Willis**
1401 Johnston-Willis Drive, Chesterfield
- **Montgomery Regional Hospital**
3700 South Main Street, Blacksburg
- **Sentara Virginia Beach General Hospital**
1060 First Colonial Road, Virginia Beach
- **Southside Regional Medical Center**
801 South Adams Street, Petersburg

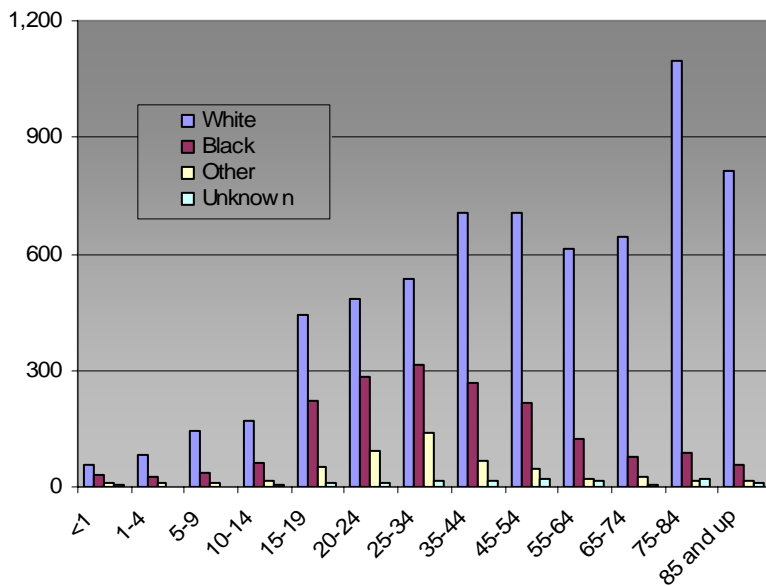


Trauma in Virginia

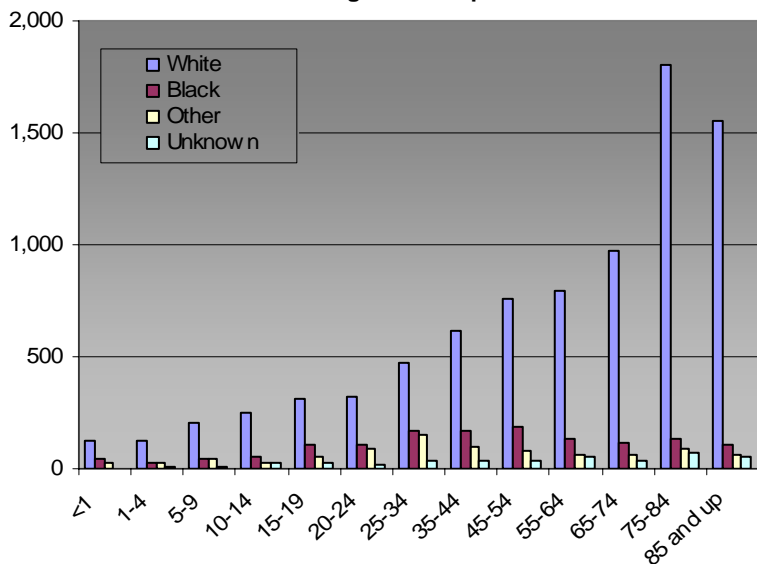
Demographics

Trauma affects every race, age, gender, and socioeconomic status...

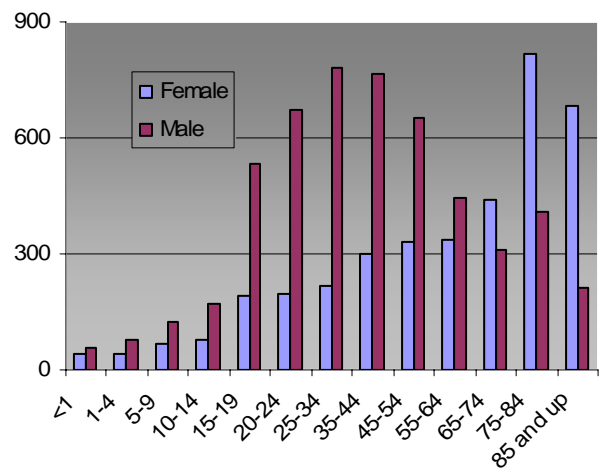
**Age and Race Distribution
Designated Trauma Center**



**Age and Race Distribution
Non-Designated Hospital**



**Age and Gender Distribution
Designated Trauma Center**



**Age and Gender Distribution
Non-Designated Hospital**

