

BUILDING PUBLIC HEALTH RESILIENCE - LOCAL ACTION ON CLIMATE CHANGE AND HEALTH EQUITY

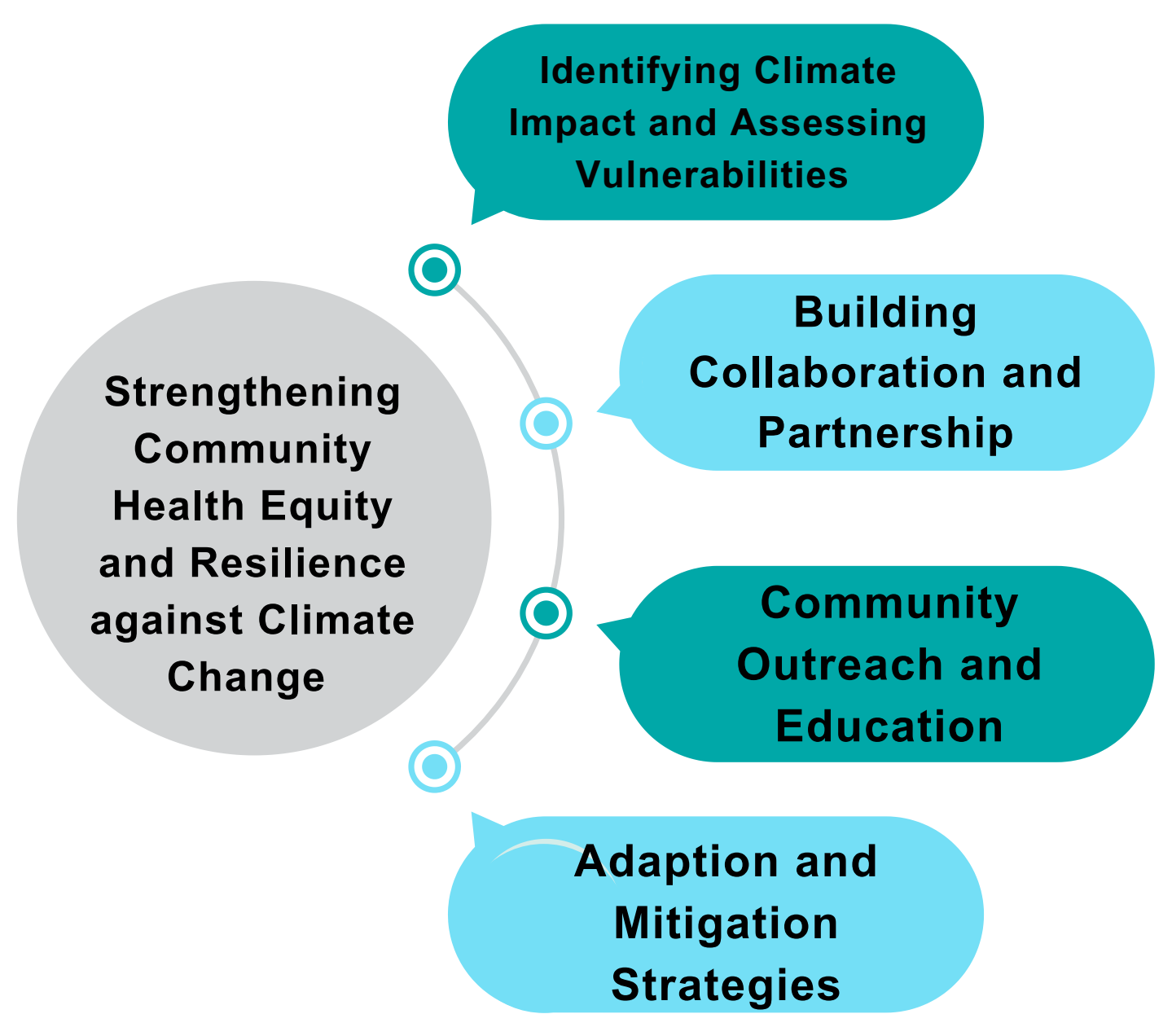
HAMPTON & PENINSULA HEALTH DISTRICTS

ANASUA GHOSH (MPH), COHORT2, 2024



PROJECT OVERVIEW

This internship project focused on Hampton & Peninsula Health District's (HPHD) effort to strengthen local public health resilience and address the impact of climate change on the local community, particularly those disproportionately impacted by the social determinants of health (SDOH).



OUTPUTS

CLIMATE CHANGE POLICY BRIEF

Strengthening Health Resilience in a Changing Climate

Public Health Brings Evidence-Based Solutions & Expertise

Community Climate Resilience

Role of Local Public Health in Addressing Climate Change and Health Equity

Assessment and Surveillance

Intersectoral Collaboration

Community Outreach & Education

Adaptation and Mitigation Strategies

Updated: 06/20/2024

Role of Local Public Health in Addressing Climate Change and Health Equity

Community Outreach & Education

Adaptation and Mitigation Strategies

Updated: 06/20/2024

INFOGRAPHIC

How Does Climate Change Affect Health?

- Flooding:** Displacement, loss of property, mold, and respiratory issues.
- Extreme Heat:** Heat-related illness, dehydration, and exacerbation of chronic conditions.
- Air Pollution:** Respiratory and cardiovascular issues, and exacerbation of asthma.
- Contaminated Water or Food:** Gastrointestinal illness, foodborne and waterborne diseases.
- Severe Weather:** Injury, displacement, and loss of property.
- Tick and Mosquito:** Lyme disease, West Nile virus, and other vector-borne illnesses.

Scan To Learn More!

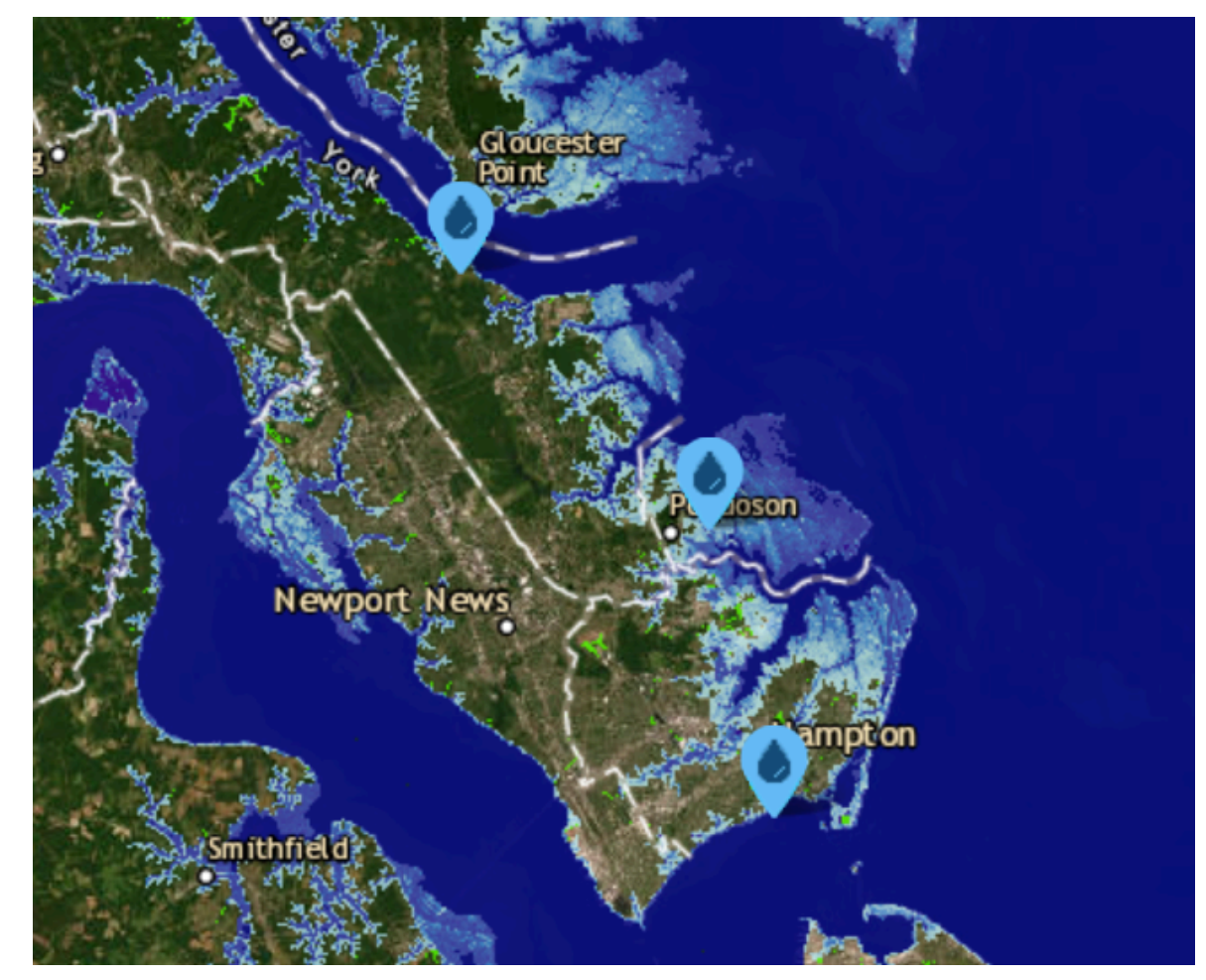
MAJOR ACTIVITIES

- ▶ Researched and identified the impact of climate change on the health of the local population, particularly those impacted by SDOH.
- ▶ Provided a concise summary report of a vulnerability assessment and collaborative efforts which included recommendations to address the impact of climate change on health equity.
- ▶ Participated in the HPHD Health Expo as an active member of the HPHD team: attended preparation meetings and demonstrations, distributed flyers, and conducted a climate change awareness survey.
- ▶ Reached out to locality partners and external stakeholders and developed a policy brief as a part of the stakeholder engagement plan.
- ▶ Presented the public health perspective of climate change to the City of Newport News's Water Works in a meeting.
- ▶ Participated in two meetings with the City of Hampton's Resilient Hampton (Climate Change) and the Chesapeake Climate Action Network (CCAN).
- ▶ Participated in community outreach activities with the Population Health team throughout the summer.
- ▶ Joined the beach water monitoring team from the Hampton Health District to collect water samples from 5 beach locations in Hampton.
- ▶ Participated in City of Hampton Clean City beach cleaning.

ISSUE OR PROBLEM

Climate-related health risks are a growing issue and will become more severe sooner than anticipated. Vulnerable communities and those disproportionately impacted by social determinants of health are at higher-risk of climate change impacts.

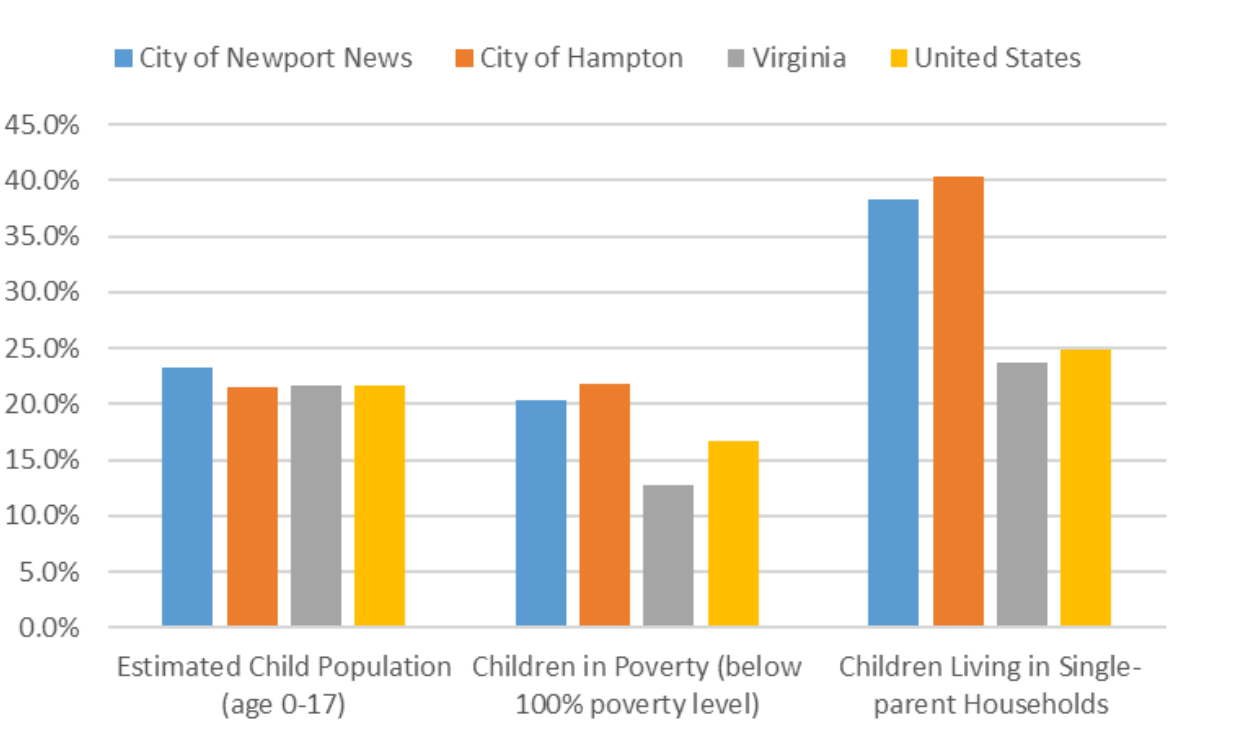
Roughly 22,000 people in the City of Hampton and 3,400 people in the City of Newport News live on exposed land below 6 feet. The adjacent map is a projection of the local coastal region after 6 feet of sea level rise (SLR). This projection could happen as soon as 2090.



Anticipated 4-7 Major Hurricanes in 2024

Low-income communities and communities of color are particularly vulnerable to the effects of climate change in the Cities of Hampton and Newport News.

COMPARISON OF CHILDREN AT-RISK; 2024 COUNTY HEALTH RANKINGS



HPHD CLIMATE ACTION FRAMEWORK

CLIMATE ACTION FRAMEWORK 2024

Table of Contents

- Executive Summary: 03
- Introduction: 06
- Climate Change Health Impact: 08
- Climate Change and Health Equity: 14
- Climate Change and Community Resilience: 15
- Review of Vulnerability Assessments: 16
- Collaboration (Working with Locality Partners): 25
- Updated Information and Recommendations: 34

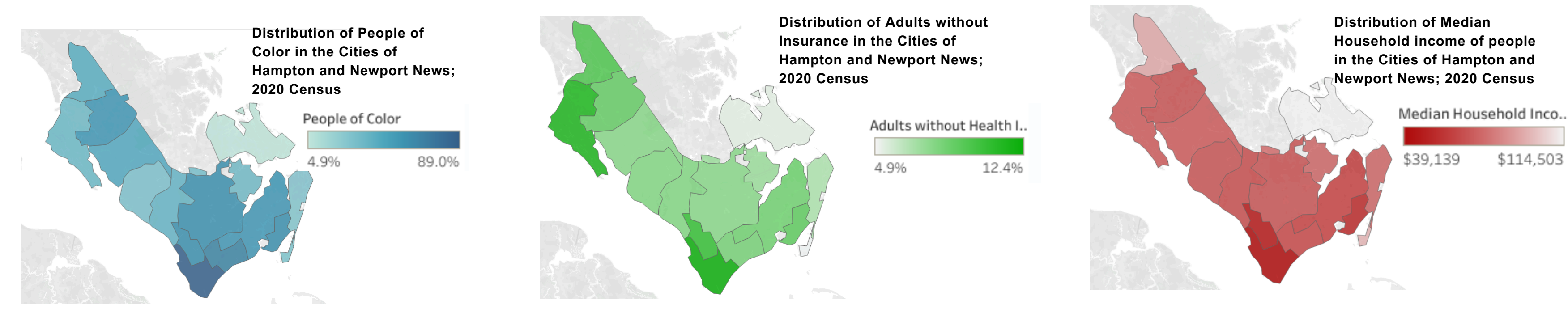
Executive Summary

The Hampton & Peninsula Health Districts (HPHD) recognize the ever-growing issue of climate change and acknowledge the severe impacts it can have on a community's well-being. The HPHD is focused on addressing the impact of climate change while identifying sustainable solutions to mitigate its effects and safeguarding health equity throughout the process. This climate action framework is a comprehensive report and a foundational document designed to provide actionable recommendations and targeted interventions to reduce and prevent the health impacts of climate change and to improve community resilience in the Coastal Peninsula region.

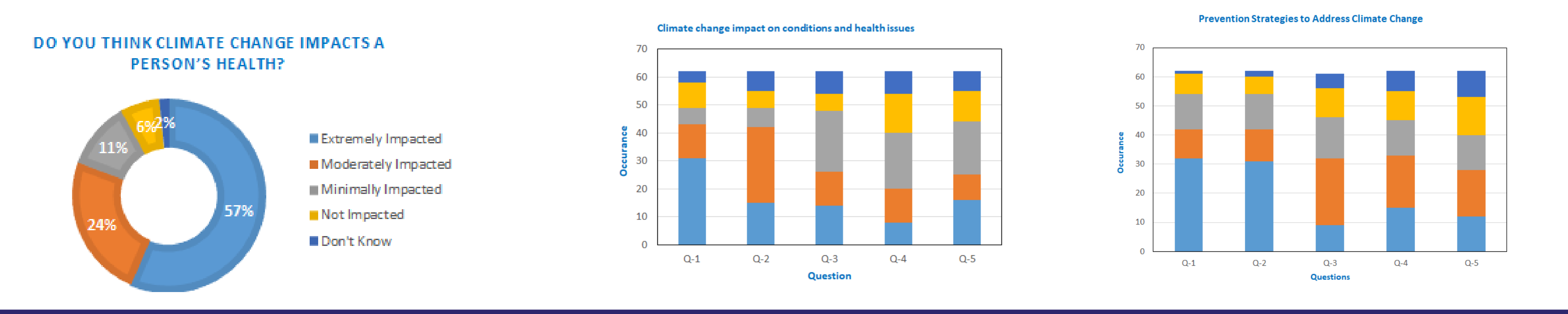
OBJECTIVES

- Identify and assess health-related impacts of climate change
- Identify at-risk populations and vulnerable communities
- Address the needs of equity groups and other stakeholders
- Develop a community action plan
- Engage in community outreach and education
- Partner with local entities to address climate and health equity issues

VULNERABILITY ASSESSMENT MAP



CLIMATE CHANGE AWARENESS SURVEY RESULTS



LESSONS LEARNED

- ▶ Increased my skills in mobilizing, collecting, analyzing, and visualizing data and understanding local, state, and national data sources;
- ▶ Developed a new skill by learning Tableau;
- ▶ Learned the challenges and barriers of planning a public health program;
- ▶ Gathered experience in public health collaboration and building partnerships;
- ▶ Learned the challenges and barriers of creating public health materials.



ACKNOWLEDGEMENTS

I sincerely thank **Jeffery Stover, Bridget Cochran, and Felicia Baez** for allowing me to participate in Internship Academy Cohort 2. I appreciate their dedication and effort to make our journey pleasant and meaningful. I had the privilege to receive an incredible, passionate, and supportive mentor, **Tes La Dieu**. She encouraged me, guided me, and was responsible for all my learning and growth. I am also immensely grateful to Megan Dewitt, Dianne Perry, and Mariel Waller for their guidance and encouragement. Finally, thank the entire population health team, who supported, guided, and provided the best internship experience.

