

Gaps

- Compile a cross-divisional list of existing community partners and identify organizations to consider for future collaboration
- Leverage sustainable partnerships
- Identify strategies to address barriers in priority populations
- Increase knowledge and awareness about community needs and available resources
- Assist community engagement work

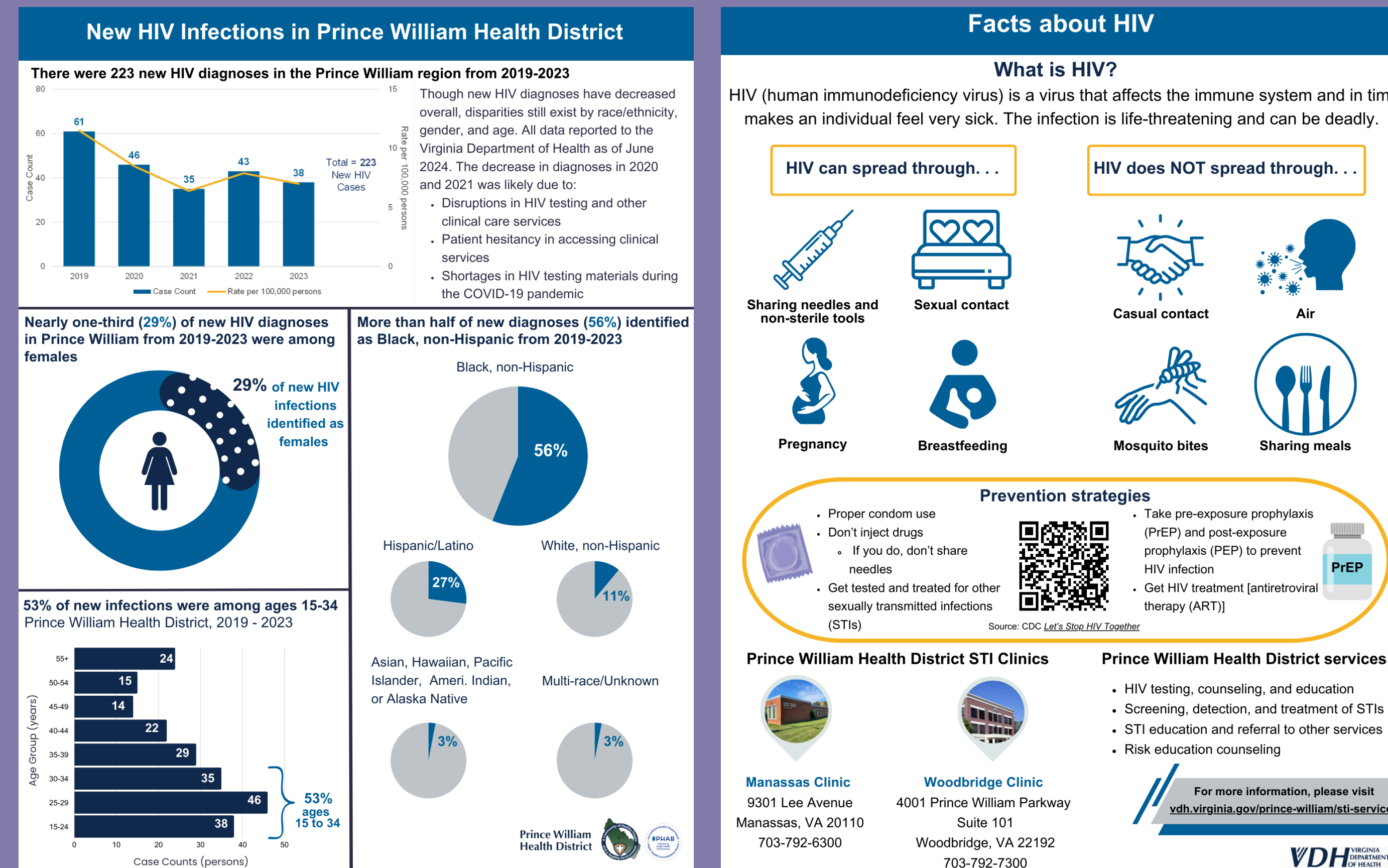
Outputs

- Conducted 20 interviews with staff across 5 divisions and 16 program areas
- Contributed to routine communication efforts (e.g., Facebook, X, Nextdoor)
- Supported Community Engagement team
- Attended community outreach events
- Shadowed Public Health Nurses in STI and Immunization Clinics
- Attended a marina inspection and a 45-day follow-up rabies site visit
- Identified key findings and themes to advance CHA and engagement efforts
- Reported project findings to leaders and staff at PWHD

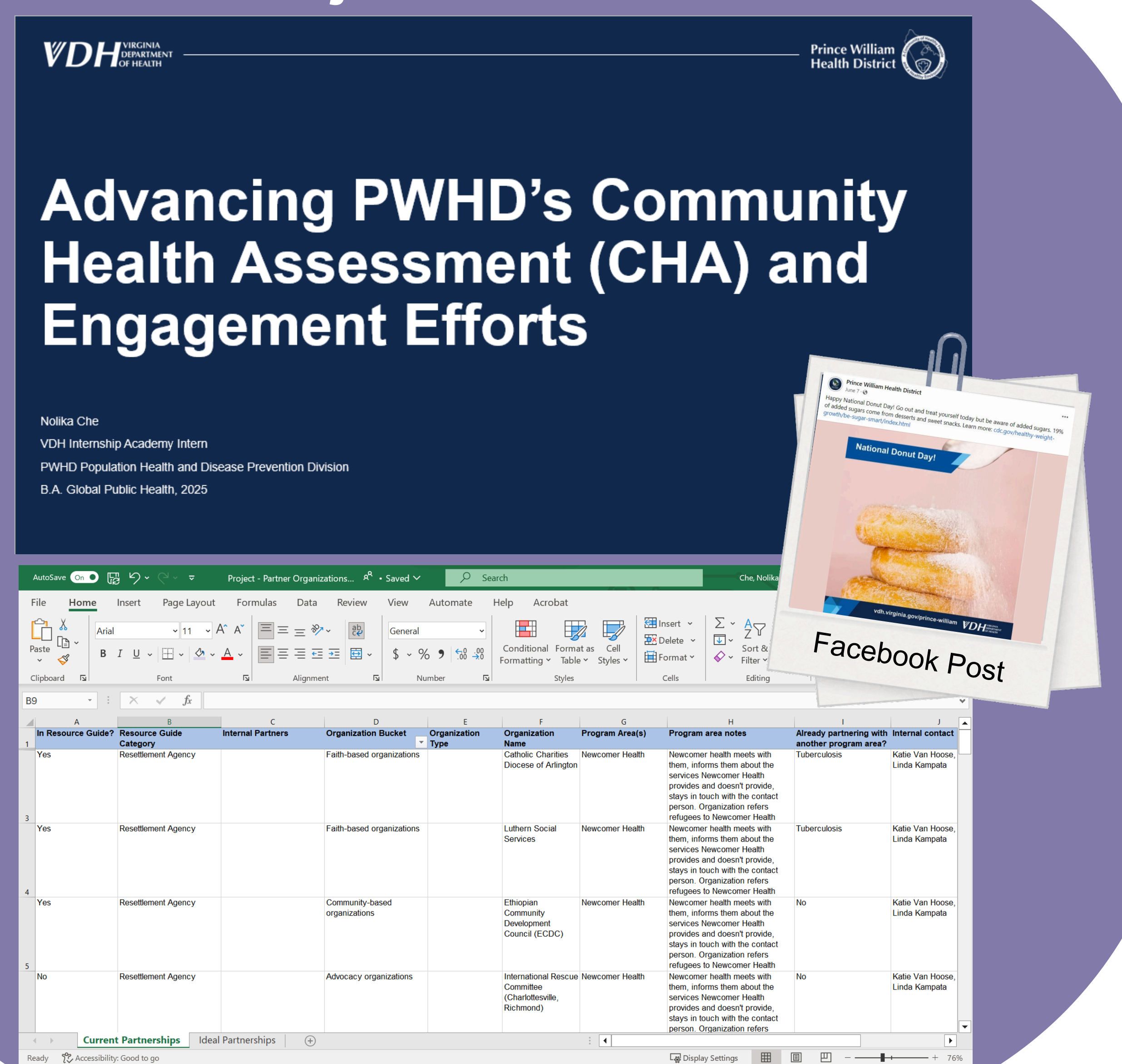
Challenges

- Foster and maintain strong relationships with populations (e.g., LGBTQ+ and Refugees)
- Patient hesitancy in accessing clinical services due to insurance status and STI misconceptions and stigma

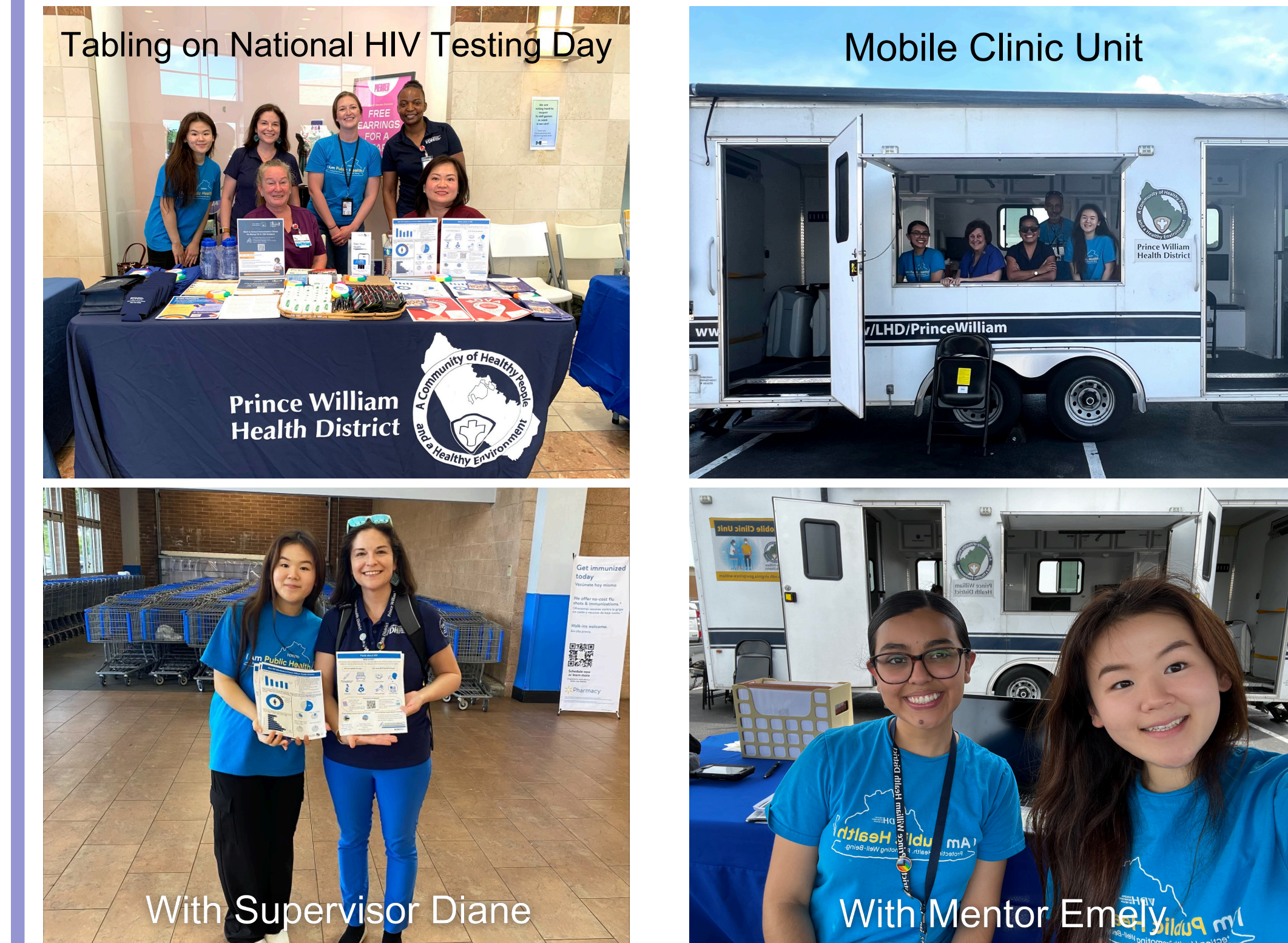
National HIV Testing Day Infographic



Project Outcomes



Experiences



Lessons Learned

- Benefit of building off of previous intern work
- Limited financial resources constrain programming
- Addressing health concerns requires collaboration with community stakeholders
- Importance of flexibility and task management

Takeaways

- Grasp scope and immerse in day-to-day functions of Health District
- Understand direct impact of public health initiatives
- Enhance ability to collect, analyze, and interpret data
- Learn how to create and deliver health education materials to community
- Improve critical thinking and problem-solving skills
- Develop meaningful relationships with staff

Acknowledgments

Grateful regards to Jeff Stover, Bridget Cochran, and Felicia Baez. A special thank you to both of my mentors, Emely Melendez and Diane Anderson, and to all of the PWHD staff for making my 10 weeks a phenomenal experience.

