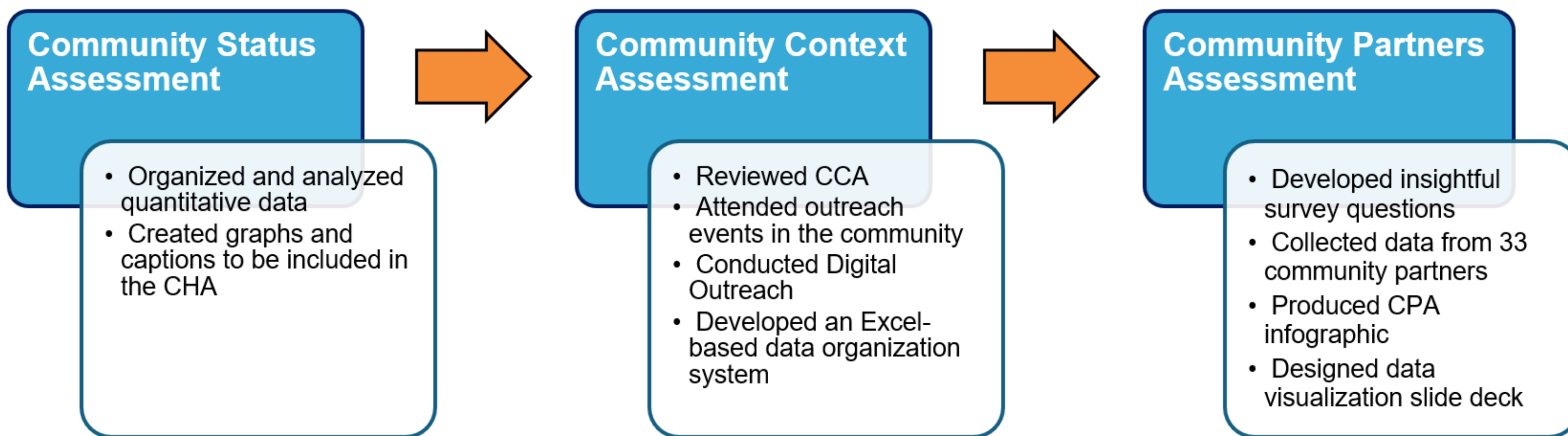


Identifying Health Disparities: 2024 Community Health Assessment



PROJECT OVERVIEW

- As part of a 15-month process, the CHA is a **comprehensive research project** aiming to **identify health disparities** and opportunities for programming in the community. At the conclusion, a **report is published**, sharing information back to the residents.
- The **2024 RHHD CHA is crucial** as it is the first assessment conducted after Richmond City and Henrico county merged into a **single district** in 2018. Though typically conducted every three years, the CHA was **postponed due to the pandemic**, resulting in a delay of the most recent assessment.
- Utilizing the **MAPP 2.0 framework**, we conduct the CHA to identify 5 significant health issues in the district to focus the next cycle's **Community Health Improvement Plan (CHIP)**.
- The CHA comprised of **3 separate assessments** to which I contributed.

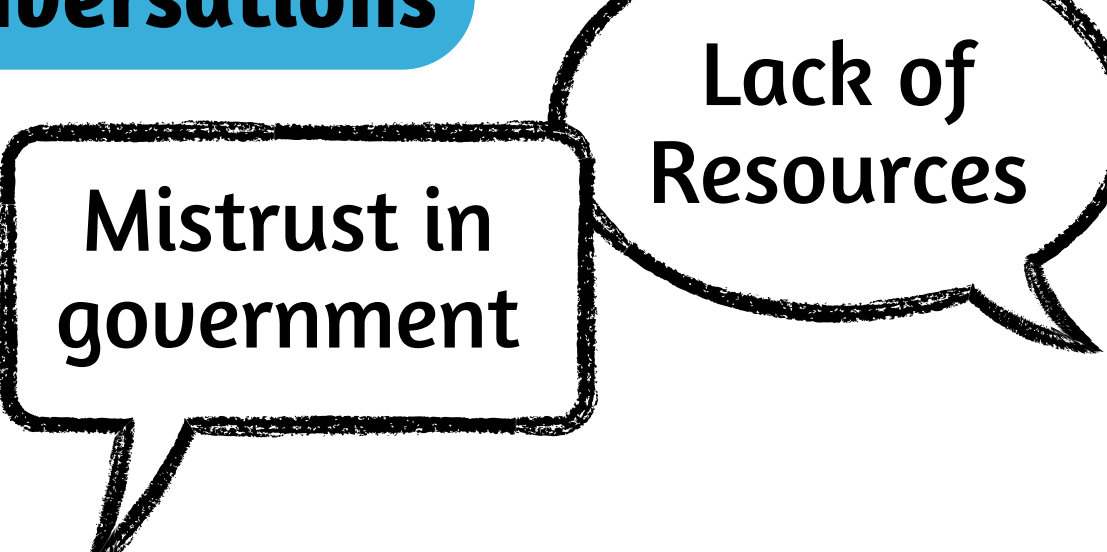


OUTCOMES

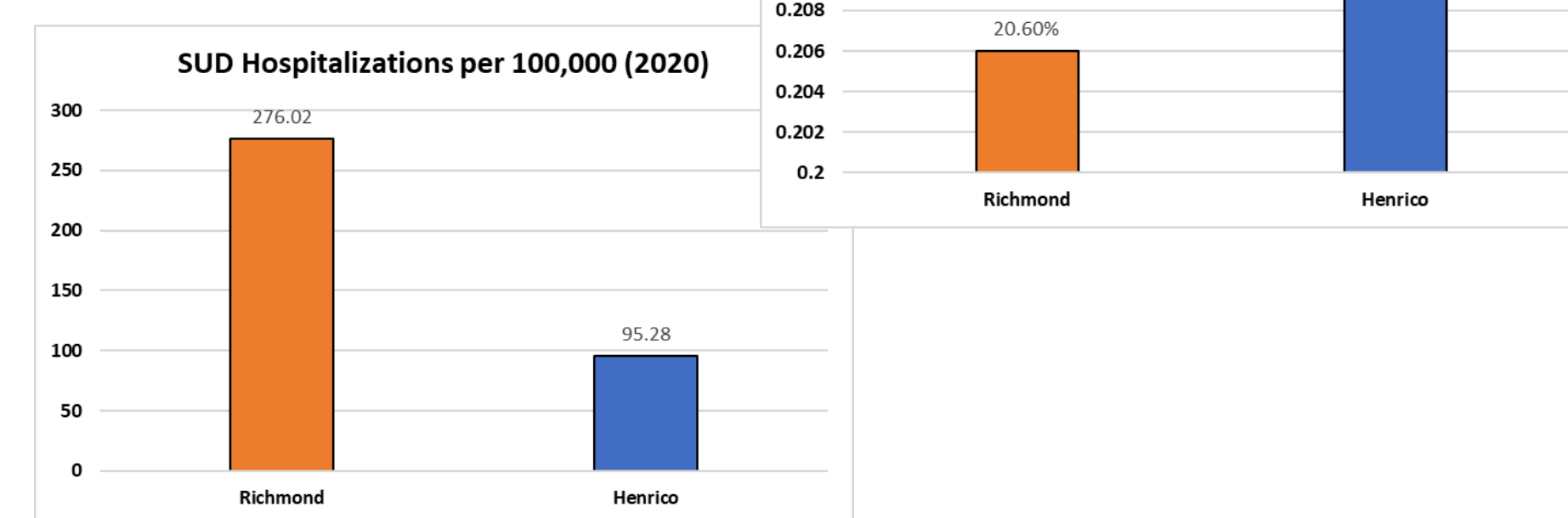
3 Major Issues



Community Conversations



Distinct disparities between the City and County



*The data collection period is still ongoing and the results are changing everyday. This is a snapshot at what we are seeing right now!

OUTPUTS

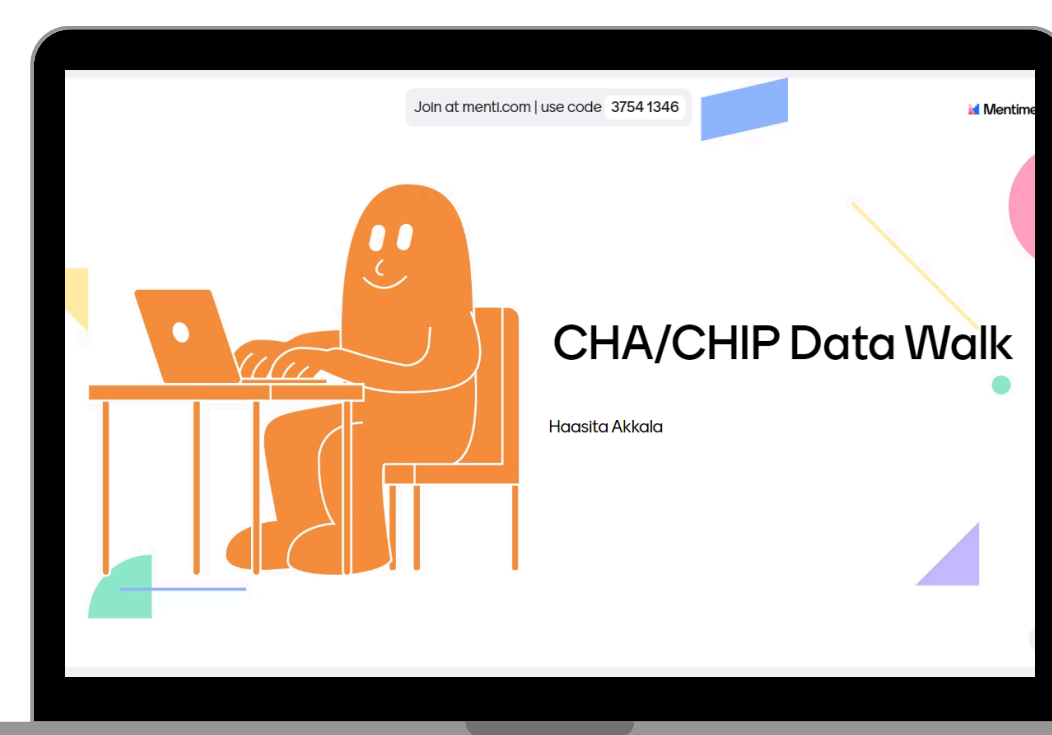
CPA



Outreach



Data Presentation



- Survey
- Infographic
- Presentation
- Called and emailed 100s of residents
- Tabled at various community events
- Synthesized quantitative data into an interactive slide deck to present to all RHHD staff



EXPERIENCES

Engaging with the local community allowed me to directly connect with the individuals we are trying to help through the events we planned or were invited to!



HEAV Homeschool Convention

St. Luke's Community Day



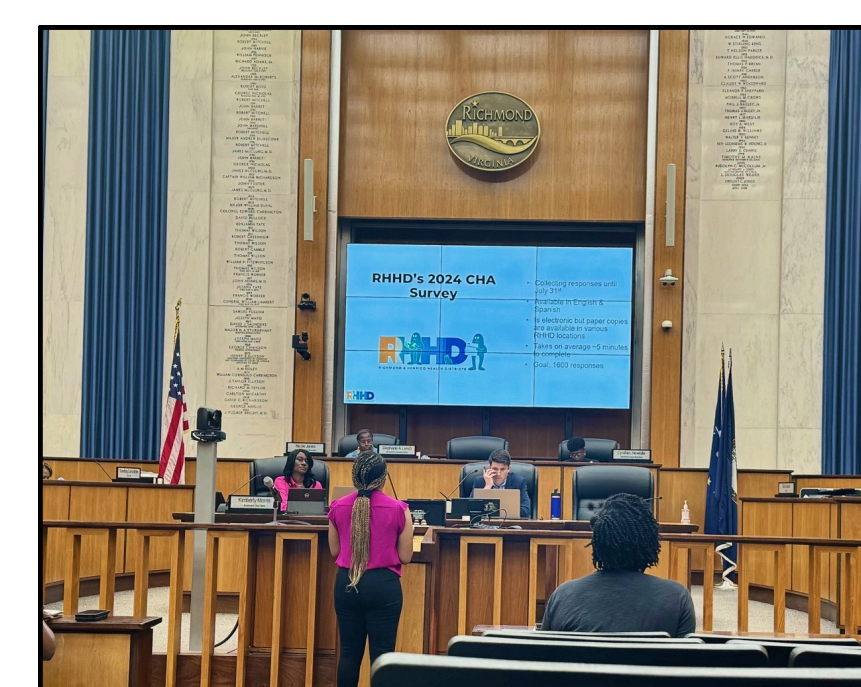
As an aspiring physician, seeing clinical work in the community was very exciting! These experiences reaffirmed the importance of collaboration between medicine and public health in order to promote overall wellbeing for the residents of our district.



Immunization and Physicals Clinic

Diverging from my main project, I was able to have various other experiences which gave me exposure to other aspects of public health and the agency overall!

City Council Meeting

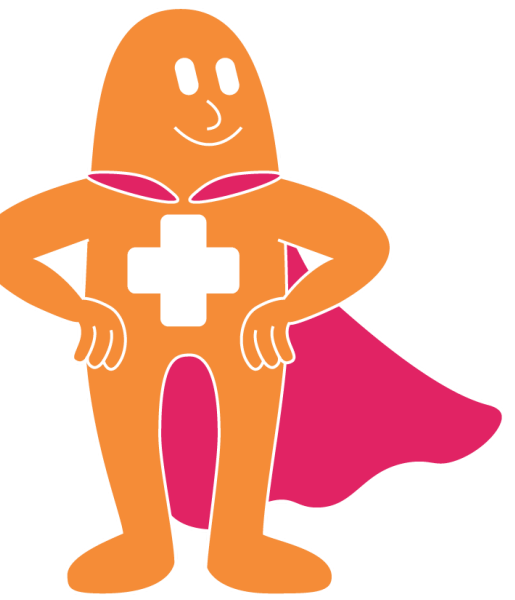


Annual All Staff Meeting



CHALLENGES

- Survey Fatigue in the Community
- Low Target Groups participation
- Limited Time for data collection
- Lack of Manpower



LESSONS LEARNED

- Improving health goes beyond the clinical setting!**
 - Only 20% healthcare is about going to the doctor. The remaining 80% is reliant on **social determinants of health**. Even within the same district, residents' health experiences may vary dramatically. Public health should be **centered around equity** to ensure that no community is left behind.
- The importance of outreach**
 - Mistrust** in the government and the **lack of knowledge** on available resources were 2 of the most common points of feedback from community members we spoke to. **Meeting residents where they are** builds trust and allows for information to be shared directly with them.
- Establish values**
 - In discussing the district's COVID-19 response with nurse manager Amy Popovich, she shared that **best way to approach a large project** is to establish values. This allows for a framework of **checks and balances** to ensure that extraneous factors do not risk the integrity of the project.

THANK YOU!

In addition to all this great work, I have been able to contribute to the Population Health Team's other ongoing projects as well. I thank each team for welcoming and including me.

- Adolescent Health
- Opioid Outreach Team
- Health Equity
- Violence Prevention

Special thanks to **Tamara Jones** and **Jasmine Carmichael** for their mentorship. **Jeff Stover** and **Bridget Cochran** for giving me these opportunities through the Internship Academy!

Want to see changes in your community?

Fill out the Richmond and Henrico Health Districts' 2024 Community Health Assessment (CHA) and tell decision makers where resources need to go.

Use the QR code below to complete the survey. Paper copies are also available at RHHD locations.

