

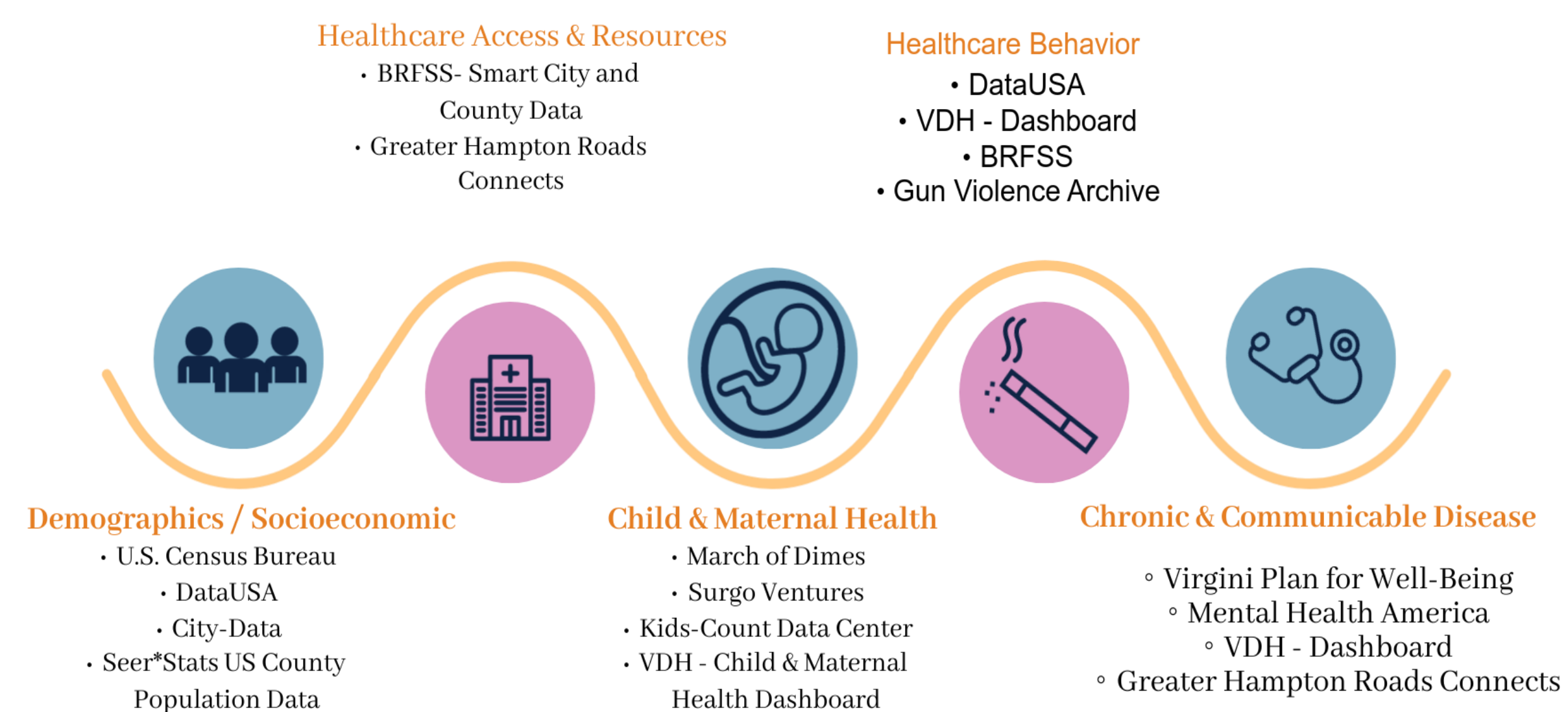
WTHD aimed to address the challenge of locating data resources at a jurisdictional level rather than at district level to assess the health needs and disparities within each locality.

Issue/Gap Identified

Limited **health-related data** (i.e., chronic/behavioral/psychosocial) availability at the county/city level.
 Data standardization issues (i.e., inconsistencies in definitions & measurements).
 Small sample size, especially for Franklin City, raises reliability issues..

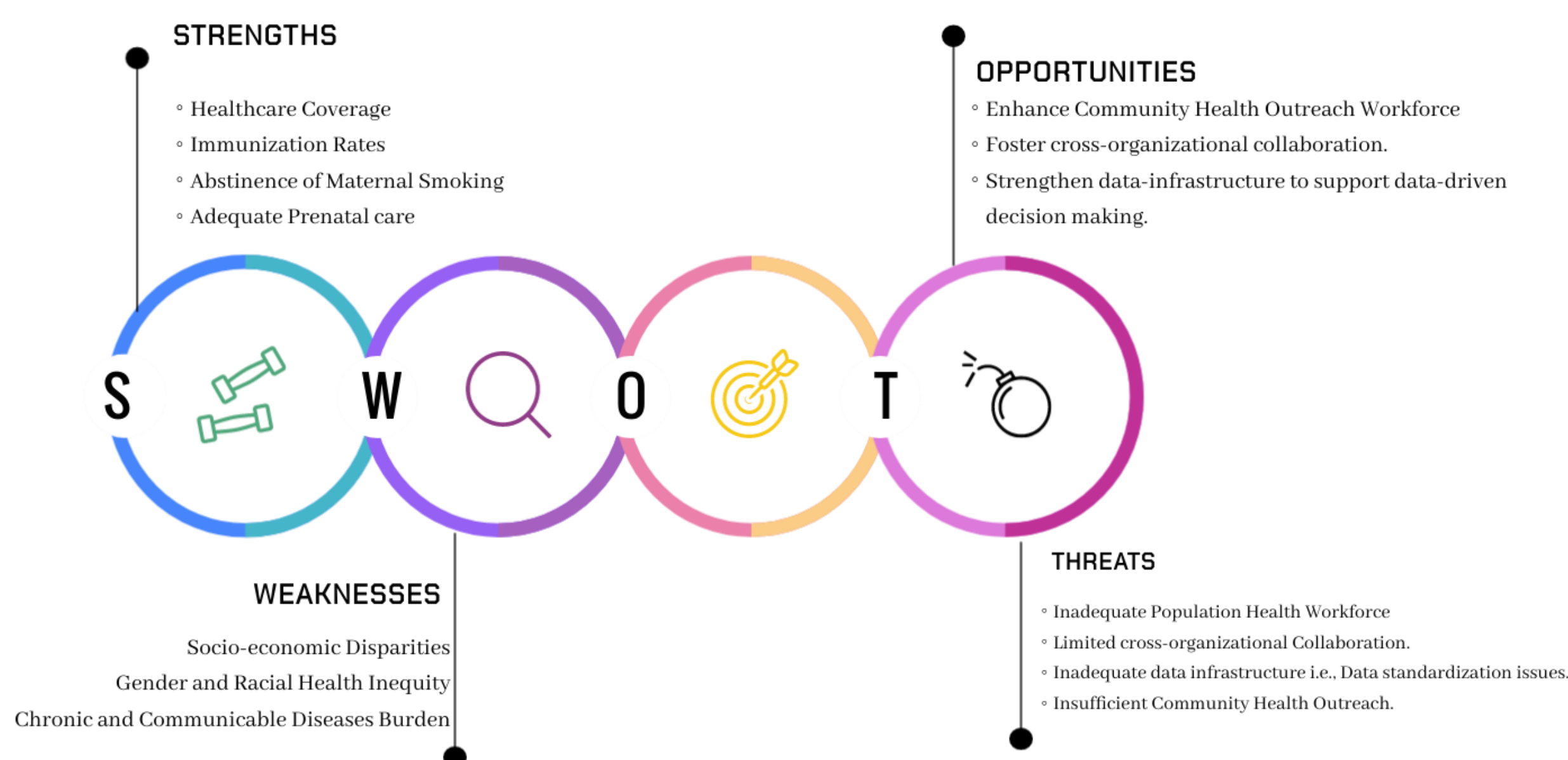
My Output

Gathered and Identified Data Sources at district and jurisdictional levels.

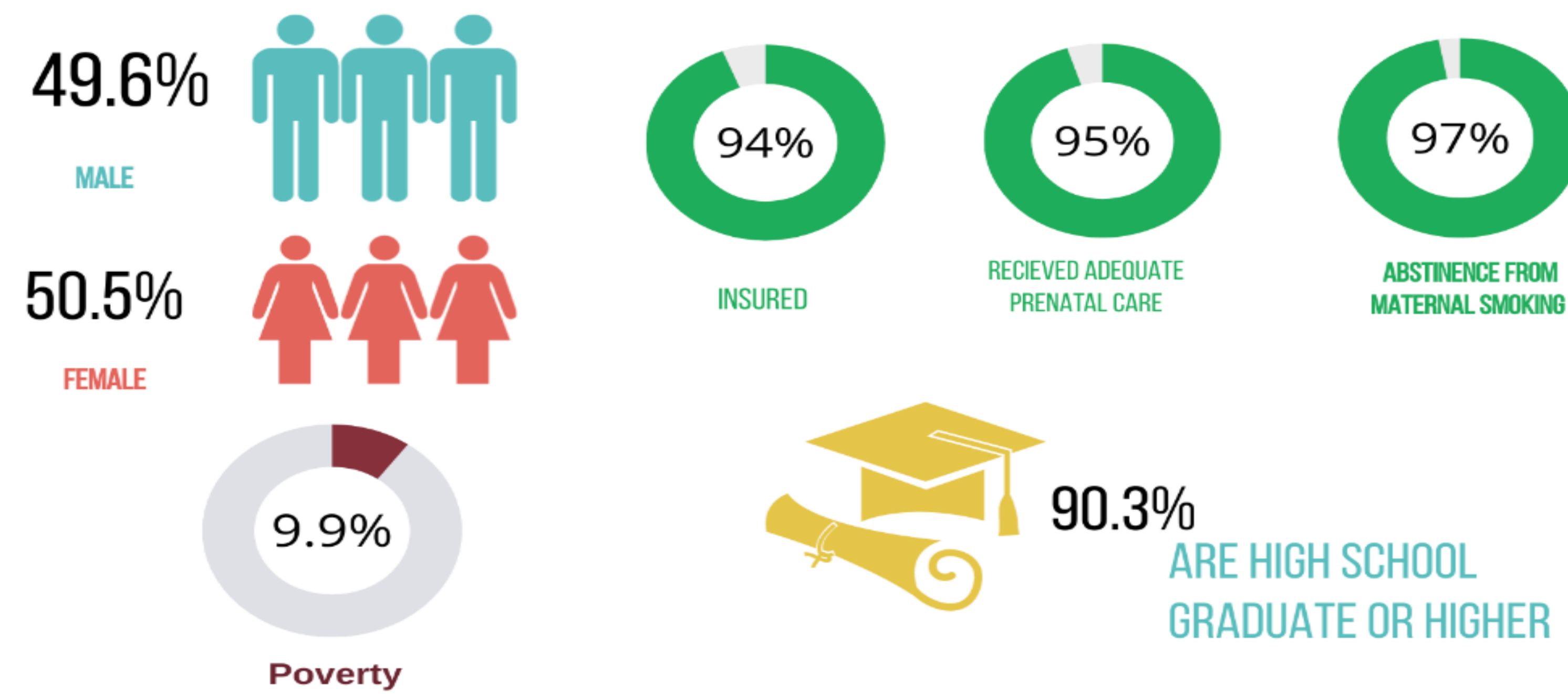


- Conducted a comprehensive assessment of extracted data Identified the **strengths and weaknesses**

- Conducted **SWOT analysis** and Provided **recommendations**



Western Tidewater Health District (WTHD)



Community Strengths

Franklin	Isle of Wight	Southampton	Suffolk
<ul style="list-style-type: none"> • Healthcare Resources/Coverage • Immunization Rate • HIV 	<ul style="list-style-type: none"> • Socioeconomic status • Healthcare Coverage • Immunization • STIs • Child & Maternal Health 	<ul style="list-style-type: none"> • Healthcare Insurance • Drug overdose deaths • Immunization 	<ul style="list-style-type: none"> • Socioeconomic status • Healthcare Coverage • Immunization Rate

Improvement Opportunities

<ul style="list-style-type: none"> • Health Risk Behavior • Education Attainment 	<ul style="list-style-type: none"> • Quality of Life • Uninsured Children 	<ul style="list-style-type: none"> • Child & Maternal Health • Socioeconomic status 	<ul style="list-style-type: none"> • Health Risk Behavior • Child & Maternal Health
--	---	---	---

Community Weakness

<ul style="list-style-type: none"> • Socioeconomic status • Chronic & Communicable Diseases • Quality of Life • Mental Health 	<ul style="list-style-type: none"> • Chronic Diseases • Health Behavior i.e., Binge Drinking • Mental Health 	<ul style="list-style-type: none"> • Chronic Diseases • Quality of Life • Mental Health 	<ul style="list-style-type: none"> • Mental Health • Syphilis, HIV • Chronic Disease i.e., diabetes, stroke, heart disease and cancer
---	---	--	--

Lesson Learned

- **Environmental Health** - Restaurant Inspection Skills
- Spent a **day in clinics with nurses**, learning how they strive to provide better healthcare services and interact with patients.
- Acquired **patient interviewing skills**, along with knowledge of the codes and ethics of patient interactions.
- Demonstrated **critical thinking and the ability to work independently** when required.
- Gained insights into the **data-related challenges** faced by public health officials

Pictures



Acknowledgment

Special thanks to Amal Patel, Angela Tillery, Marli Lauden and her team. Jay Duell and his team, and lastly to all amazing co-workers at WTHD who made this experience worthwhile

