



Issues identified:



These issues were identified in the 2018-2019 Goochland County Community Health Assessment. My work consisted of contributing to the 2024-2025 Goochland CHA so we can assess progress that has been made on mitigating these issues. I also contributed to the Community Health Improvement Plans for Hanover County and Charles City County.

Outcomes:

Goochland County CHA

- **2 out of 6** dental providers accept Medicaid patients
- Homeownership has **improved**
- Severe housing problems have gone **down**
- Housing affordability has gone **down**
- Availability of multi family housing has gone **down**
- Suicide death rate is **higher** than the state average
- Number of dentists to the ratio of the population has **worsened**
- Transportation score has **marginally improved**

Interviews & focus groups

Key informant interview
Jennifer Waggener, 07/10

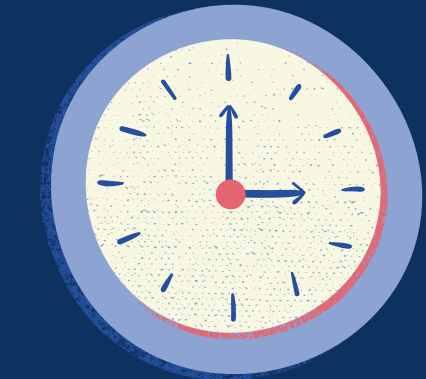
- **Streamlining:** Importance of reducing the steps a patient goes through to access mental health care
- **Time constraint:** The balance between academic and mental health care
- **Community Service Board:** Partnerships are beneficial
- **Funding:** Lack of grants and the ramifications of budget cuts

Hanover County CHIP

Community conversation
Council on Aging, 07/08

- **Transportation** for elders
- **Overproduction and overlapping of services:** each service only provides a small portion of what the community needs
- **No central or reliable mechanism for disseminating information:** Different residents will rely on different forms of communication
- **Significant gaps** between generations

Challenges:



Timing: Community health assessments are comprehensive projects that require lots of coordination. Because of summer times, it was difficult to schedule interviews, community conversations, and focus groups.



Data availability: It is often difficult to collect data on all the health indicators we want to include. This can affect our ability to address comparisons.

Lessons learned:



Overcommunication is key: When organizing interviews and focus groups, it is infinitely better to overcommunicate than to undercommunicate. Never be afraid to send follow-up emails - folks appreciate them!



Accessibility is often overlooked: In creating infographics and presentations, I learned a lot about prioritizing accessibility. The most valuable piece of advice was to always think of the person in the back of the room. Can they read your slides?

My outputs:

Goochland County CHA

- Infographics on economic stability
- Key informant questions and interviews
- Focus groups

Hanover County CHIP

- Community conversations guide
- Flyers and handouts for the Healthy Hanover community health survey
- Community conversations
- **Charles City County CHIP**

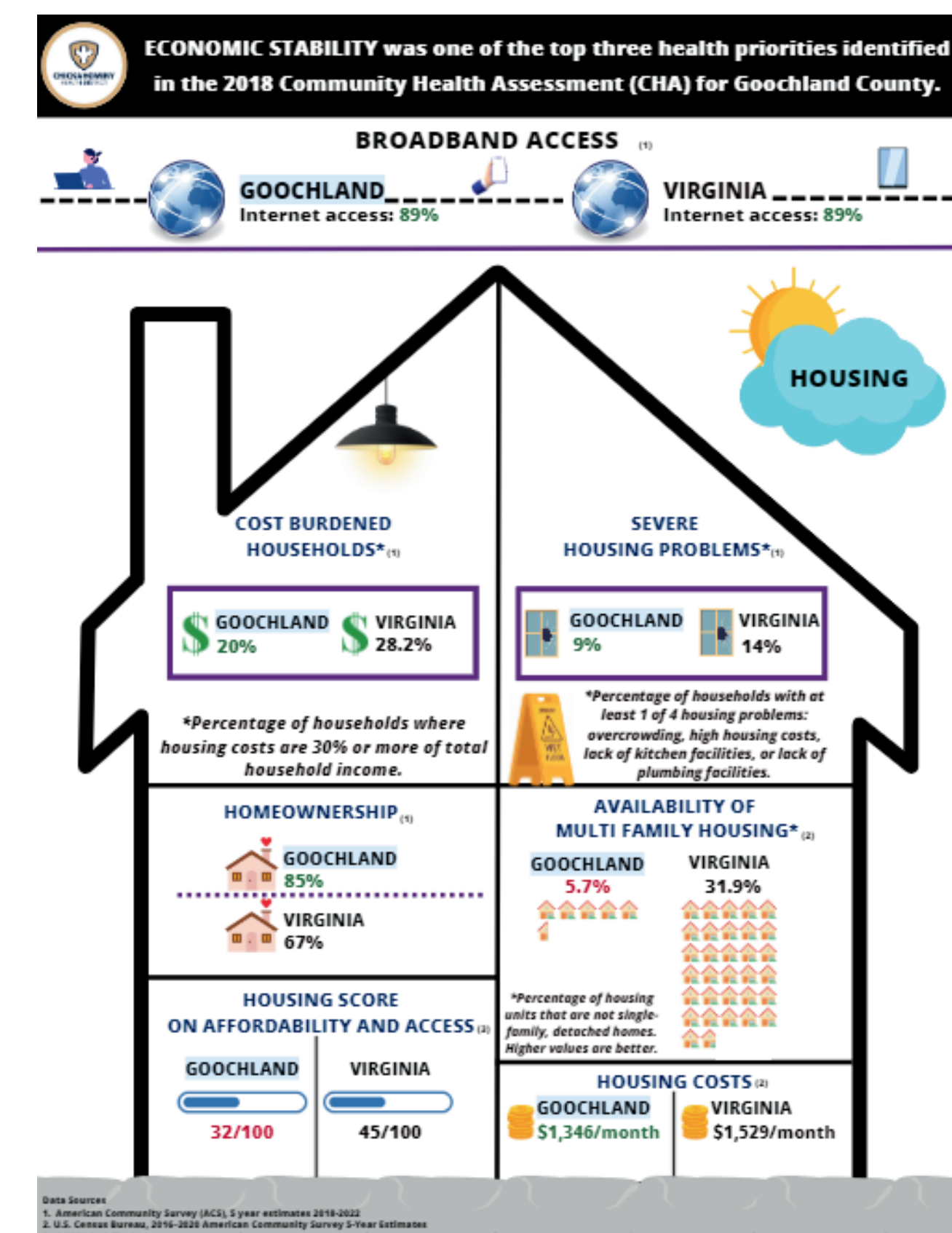
- Reviewed and edited CHIP before release
- Press release

Miscellaneous

- Personal project: Leadership training presentation on long-term impacts of redlining in Virginia



HEALTHY HANOVER
Community Conversations Guide



HANOVER COUNTY COMMUNITY HEALTH SURVEY

Use your phone to scan the QR code or take the survey here: <https://forms.office.com/g/LL47PFM0J0>

Send the link to friends and family or direct them to the health department website.

Stay connected by following us on social media and participating in our community conversations.

FOR MORE INFORMATION or to have paper copies dropped off at your organization, please contact us at CHDWellness@vdh.virginia.gov or call (804)-382-6150.



Presenting at a monthly leadership meeting



Attending an elder abuse event

Acknowledgments:

I would like to acknowledge my supervisor, Emily Hines, for being my biggest cheerleader this summer.

I would also like to acknowledge the team at Atlee Commons for welcoming me as one of their own.