
Virginia Respiratory Disease and Mpox Data Update

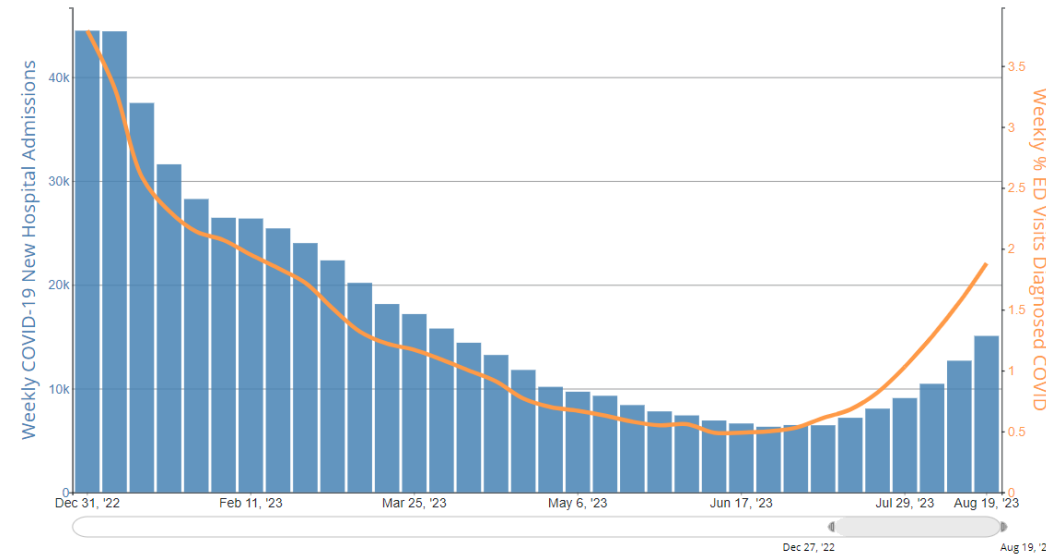
August 31, 2023



National View – Week Ending August 19th, 2023:

- New hospital admissions of patients with confirmed COVID-19 **increased 19%** to 2,152 previous week 7-day average
- **1.9%** of ED visits were with Diagnosed COVID-19

Weekly COVID-19 New Hospital Admissions and % ED visits with Diagnosed COVID-19 in the United States Reported to CDC (2023)

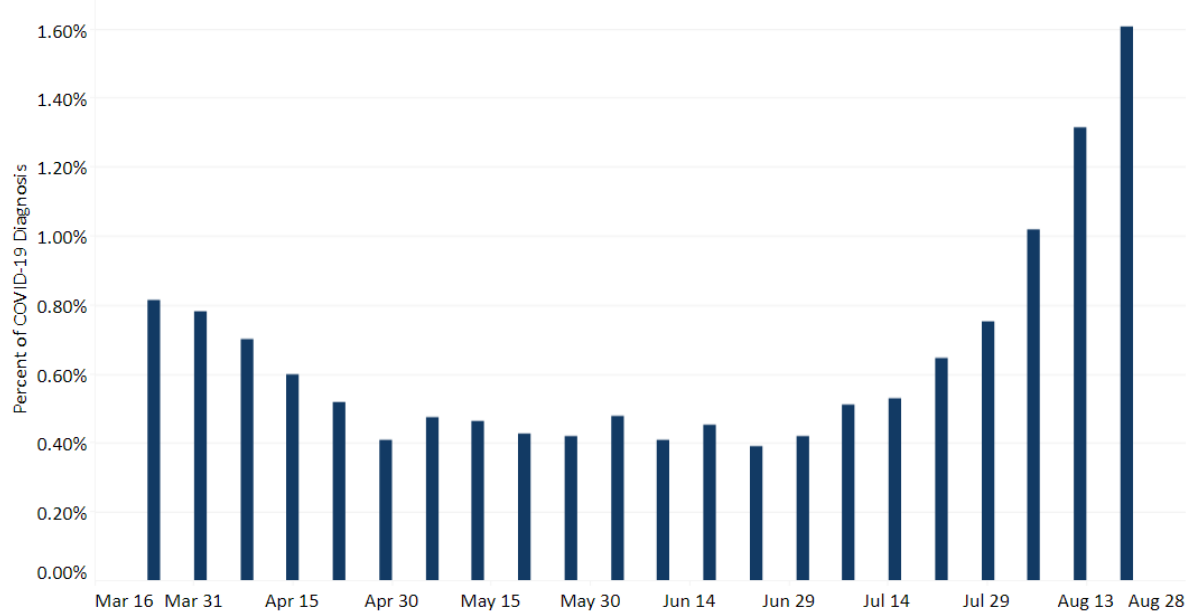


Virginia Data: Week ending August 19 2023, MMWR week 33:

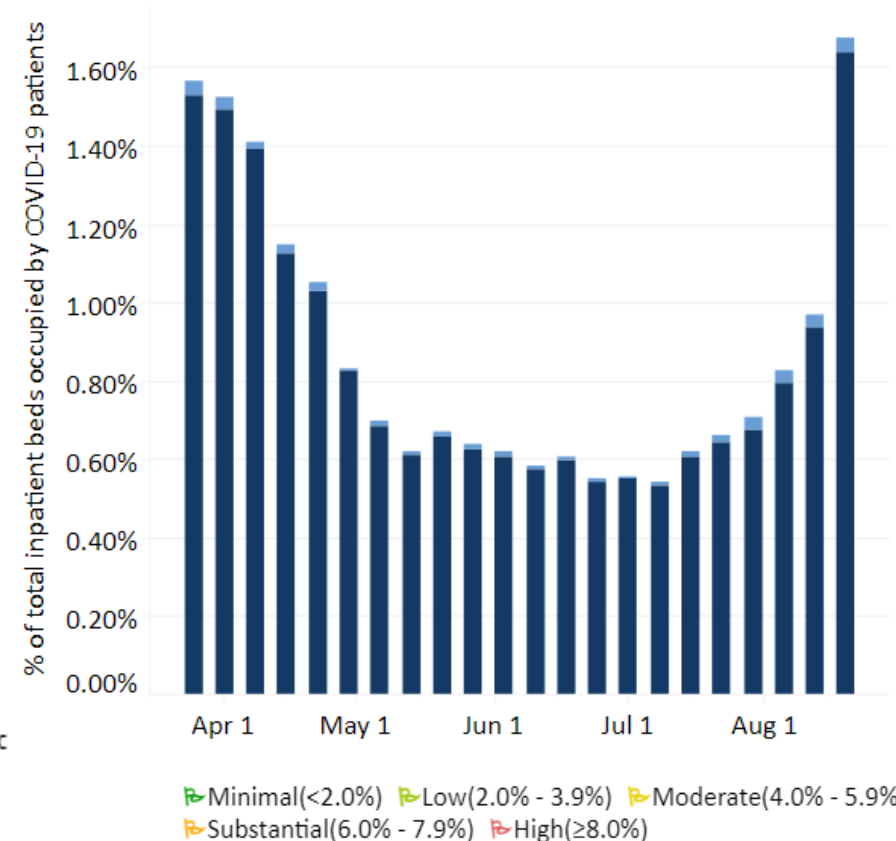
- **1.61%** of ED visits were for diagnosed COVID-19 (22% increase than previous week)
- **1.67%** of inpatient beds in use for COVID-19 (72% increase from previous week)
- The number of deaths reported for this week was 1 (confirmed & probable)

% Beds Occupied by Patients with COVID-19 is **Minimal** ↗

Weekly Percent of Emergency Department Visits for Diagnosed COVID-19 in Virginia, March 2023 – August 2023



COVID-19 Hospital Beds in Use for COVID-19 Virginia, March 2023 – August 2023



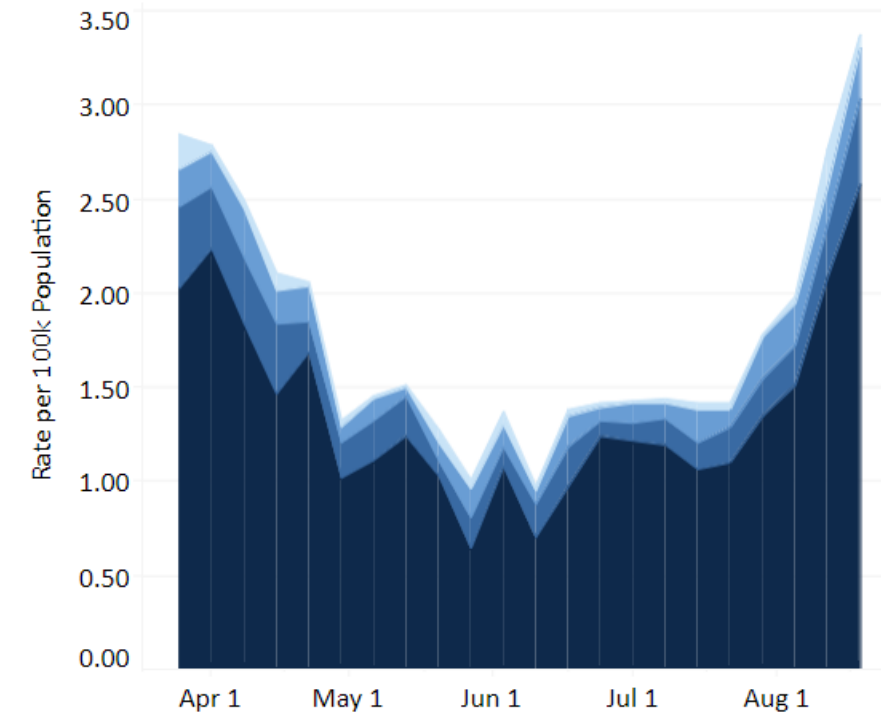
*Source: [CDC COVID Data Tracker](#), [VDH COVID-19 Dashboard](#)

VDH Weekly Respiratory Disease Surveillance Report. Percentage change is calculated off updated case numbers from week prior.

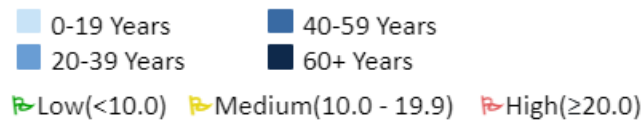
*Data comparisons: Wednesday-Wednesday

Virginia's COVID-19 Hospital Admissions for the week ending August 19th, 2023:

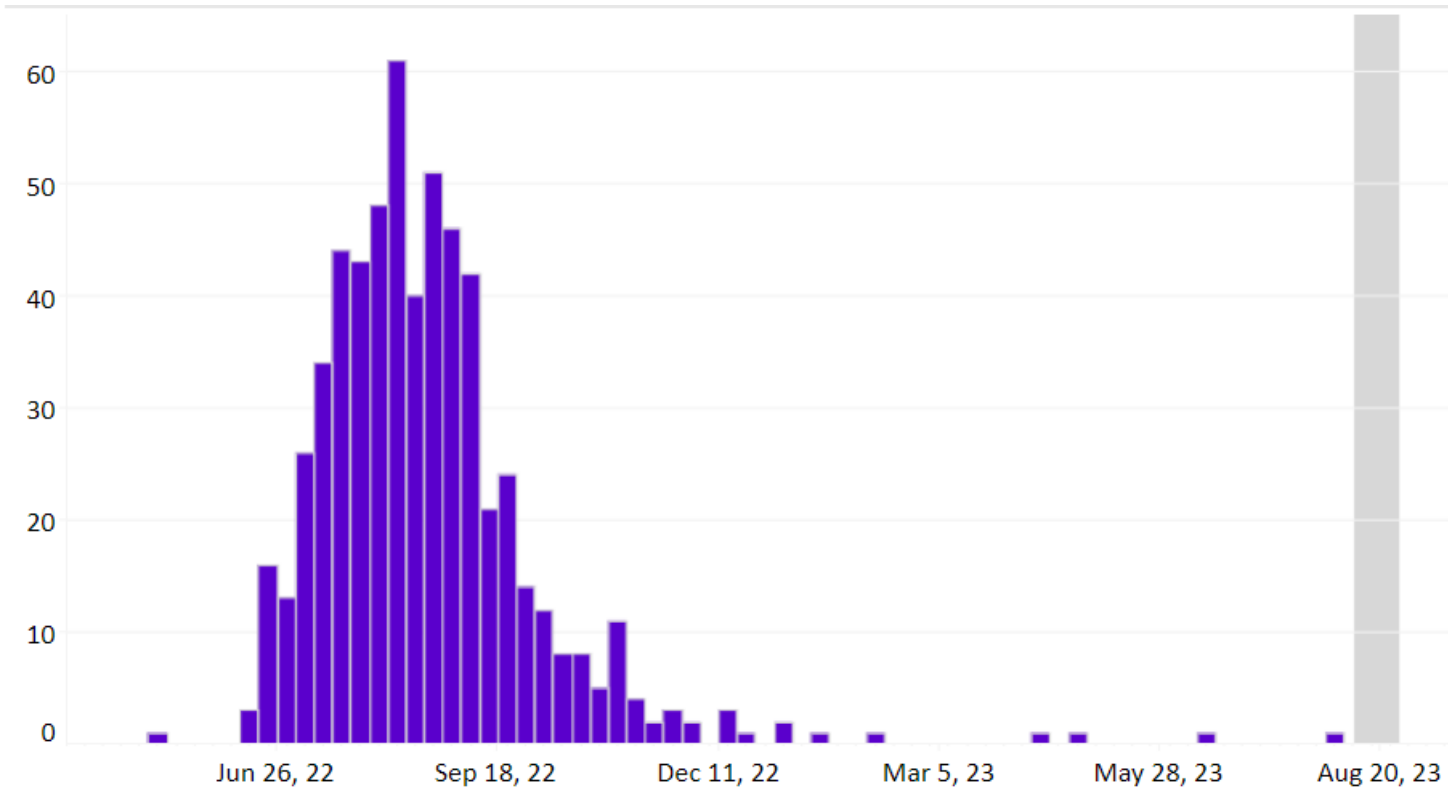
- 3.37 Hospital Admissions per 100,000 population
•22% increase from previous week



New COVID-19 Hospital Admissions are **Low** 🟢



Epi Curve of Mpox Cases (5/2022 – 8/2023)



Total Cases	574
Hospitalizations	31
Deaths	2

Mpox Cases By Age and Sex (as of 08/2023)

Age Group	Cases
0-9 Years	0 (0.0%)
10-14 Years	1 (0.2%)
15-19 Years	14 (2.4%)
20-29 Years	210 (36.6%)
30-39 Years	226 (39.4%)
40-49 Years	85 (14.8%)
50-59 Years	33 (5.7%)
60-69 Years	3 (0.5%)
70+ Years	2 (0.3%)
Sex	
Female	32 (5.6%)
Male	541 (94.4%)

*Data represent investigations with notifications submitted in VEDSS.