
Virginia Respiratory Disease and Mpox Data Update

August 17, 2023

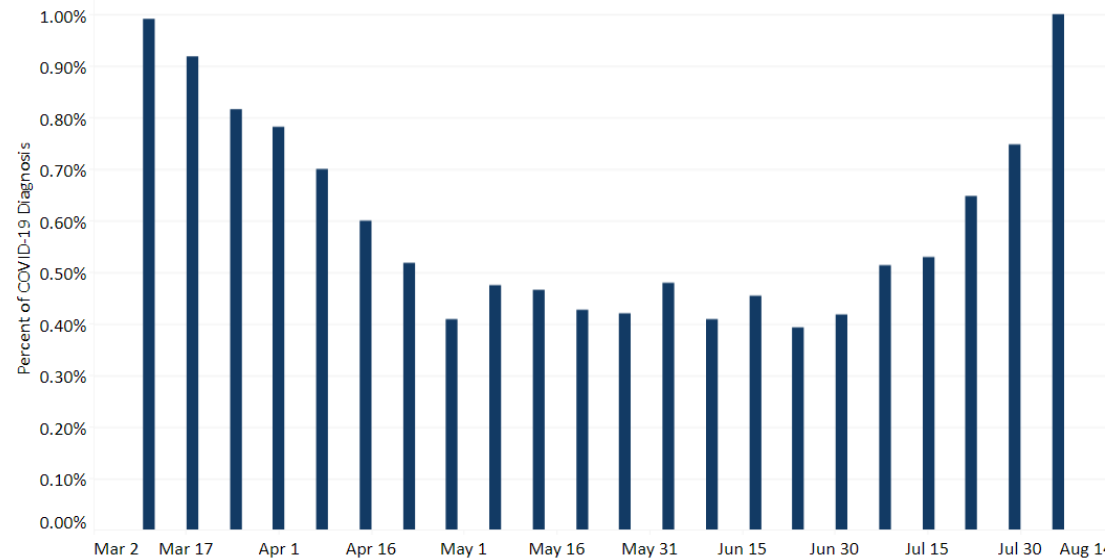


Virginia Data: Week ending August 5 2023, MMWR week 31:

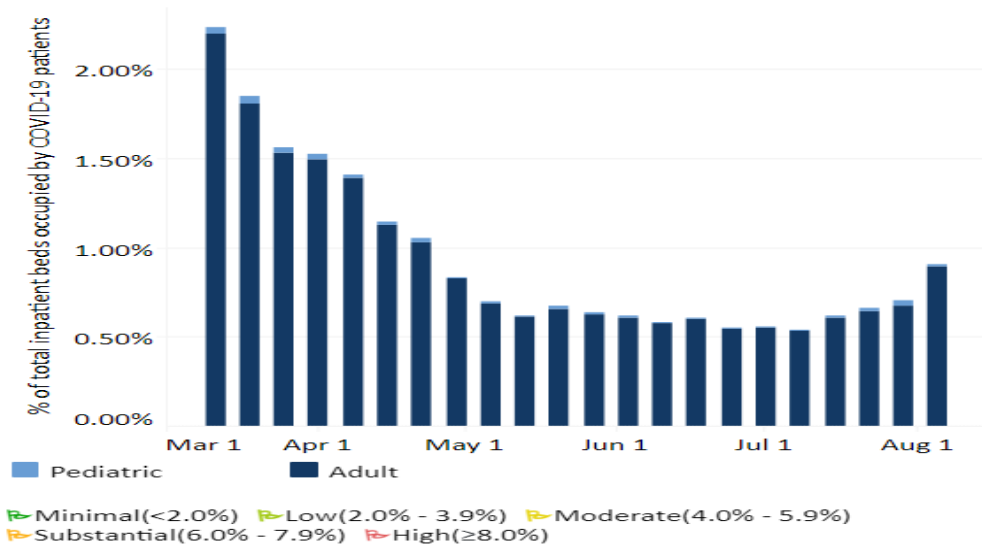
- **1.0%** of ED visits were for diagnosed COVID-19
 - **33% increase** than previous week

- **.91%** of inpatient beds in use for COVID-19
 - **28% increase** from previous week
- The number of deaths reported for this week was 1 (confirmed & probable)

Weekly Percent of Emergency Department Visits for Diagnosed COVID-19 in Virginia, February 2023 – August 2023



COVID-19 Hospital Beds in Use for COVID-19 Virginia, February 2023 – August 2023



*Source: [CDC COVID Data Tracker](#), [VDH COVID-19 Dashboard](#)

VDH Weekly Respiratory Disease Surveillance Report. Percentage change is calculated off updated case numbers from week prior.

*Data comparisons: Wednesday-Wednesday

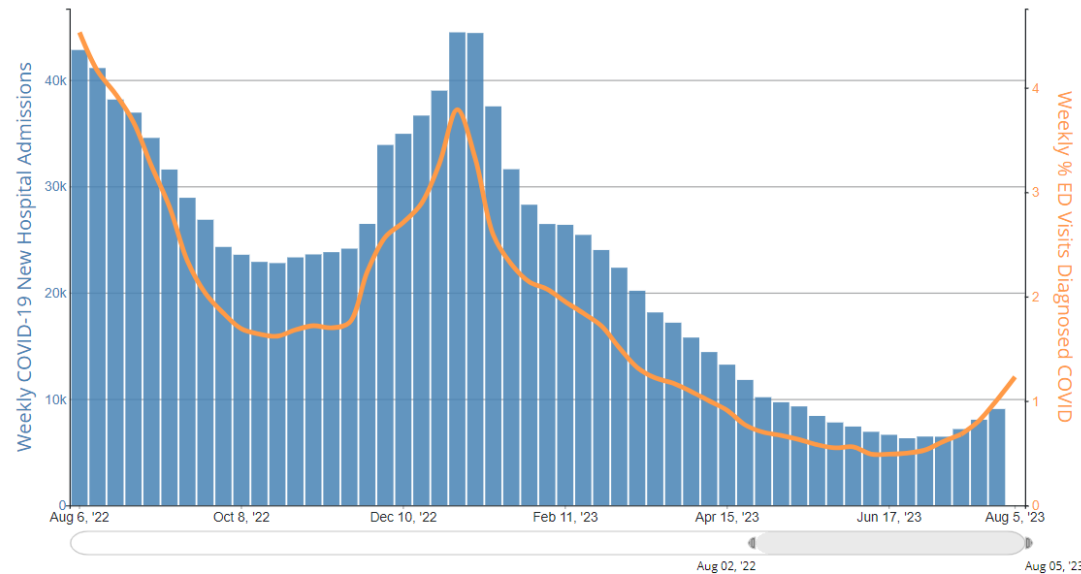
■ Pediatric
■ Adult

% Beds Occupied by Patients with COVID-19 is **Minimal**

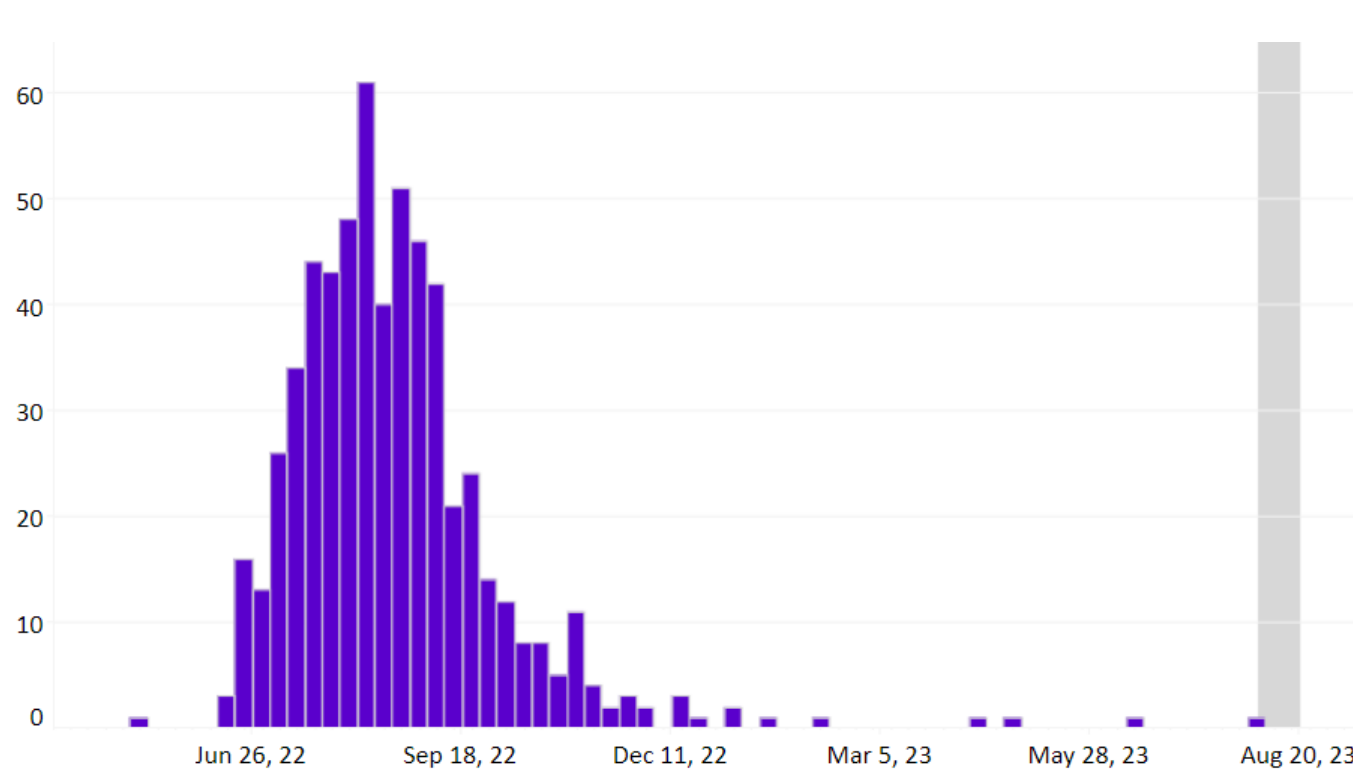
National View – Week Ending August 5th, 2023:

- New hospital admissions of patients with confirmed COVID-19 **increased 14%** to 1,474 previous week 7-day average
- **1.2%** of ED visits were with Diagnosed COVID-19 for the week ending August 5th, 2023

Weekly COVID-19 New Hospital Admissions and % ED visits with Diagnosed COVID-19 in the United States Reported to CDC (2023)



Epi Curve of Mpox Cases (5/2022 – 8/2023)



Mpox Cases By Age and Sex (as of 08/2023)

Age Group	Cases
0-9 Years	0 (0.0%)
10-14 Years	1 (0.2%)
15-19 Years	14 (2.4%)
20-29 Years	210 (36.6%)
30-39 Years	226 (39.4%)
40-49 Years	85 (14.8%)
50-59 Years	33 (5.7%)
60-69 Years	3 (0.5%)
70+ Years	2 (0.3%)
Sex	
Female	32 (5.6%)
Male	542 (94.4%)

Total Cases	574
Hospitalizations	31
Deaths	2

*Data represent investigations with notifications submitted in VEDSS.