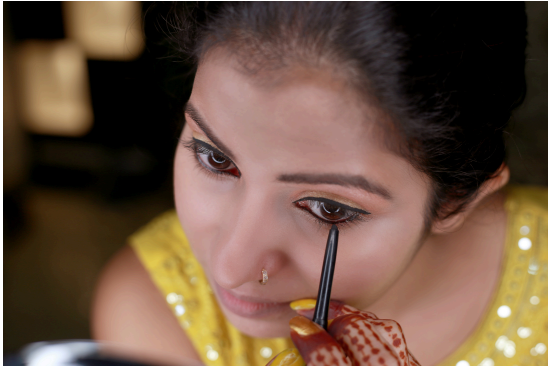


LEAD IN COSMETICS AND RELIGIOUS POWDERS



Lead is a highly toxic metal. It is especially harmful for young children because they are still growing and developing. Exposure to lead can lead to many different health issues, such as:

- Brain and nervous system damage
- Slowed growth and development
- Hearing and speech problems
- Learning and behavior issues

Unfortunately many items can contain lead. Even items you might not expect. One way children can become exposed to lead is through cosmetics and religious powders, such as:

- Kohl
- Surma
- Kajal
- Sindoor
- Kumkum



Sometimes these products are contaminated with lead even if lead isn't listed in the ingredients. Children can become exposed to lead when you put these products on their eyes, face and/or feet. They may also accidentally ingest any product that gets on their hands. Pregnant women that use these products have a higher risk of miscarriage, stillbirth, or delivering their baby too early.

Follow these steps to continue practicing your important traditions safely:

- Only use products purchased in the United States.
- Immediately stop using any products purchased outside the United States. Wash all hands and household surfaces and dispose of the remaining products.
- Ask a health care provider to test children and pregnant women for lead exposure if they have used any products purchased outside of the United States.



Learn more:
www.vdh.virginia.gov/leadsafe/

