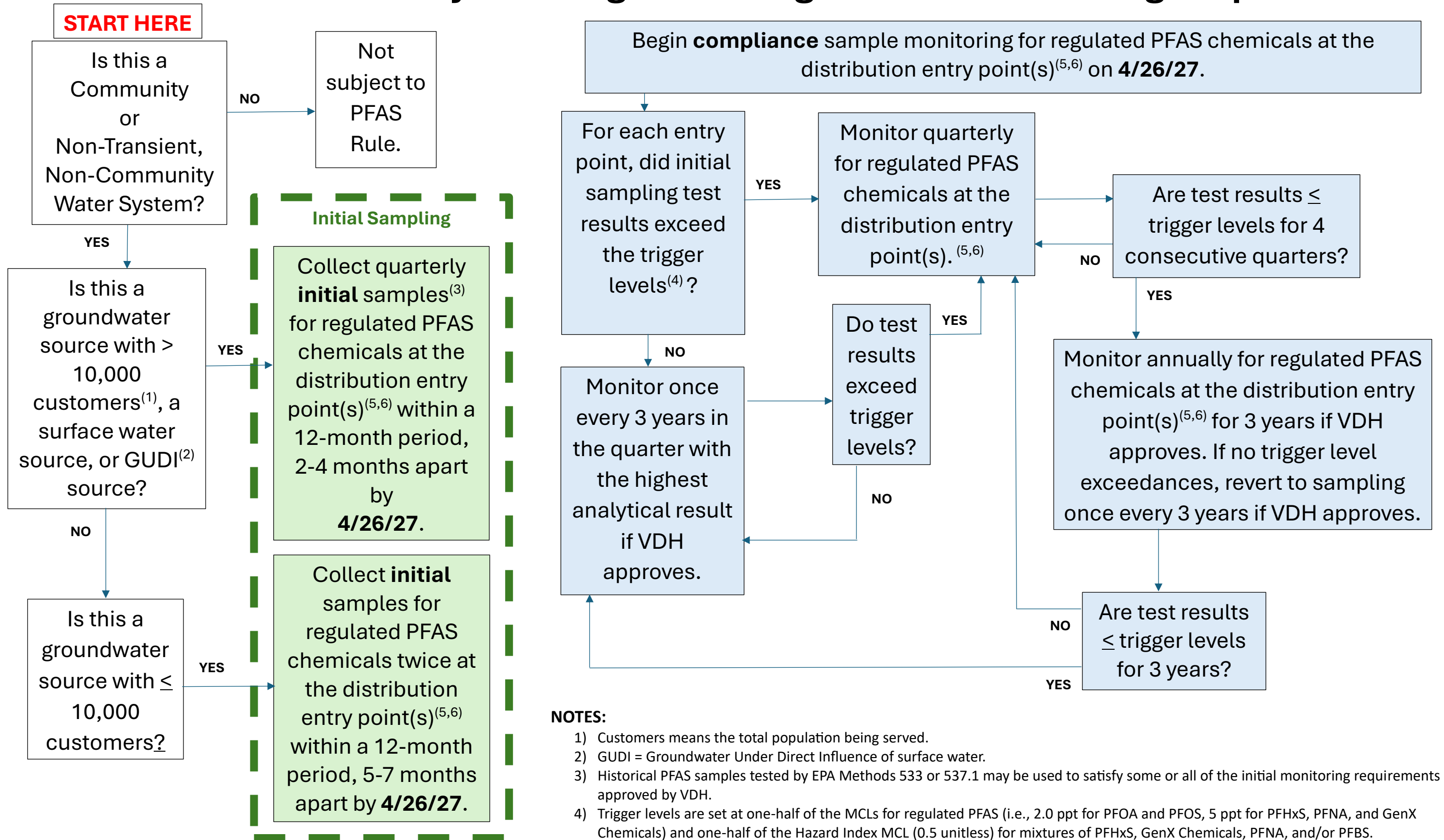


PFAS National Primary Drinking Water Regulation – Monitoring Requirements



NOTES:

- 1) Customers means the total population being served.
- 2) GUDI = Groundwater Under Direct Influence of surface water.
- 3) Historical PFAS samples tested by EPA Methods 533 or 537.1 may be used to satisfy some or all of the initial monitoring requirements if approved by VDH.
- 4) Trigger levels are set at one-half of the MCLs for regulated PFAS (i.e., 2.0 ppt for PFOA and PFOS, 5 ppt for PFHxS, PFNA, and GenX Chemicals) and one-half of the Hazard Index MCL (0.5 unitless) for mixtures of PFHxS, GenX Chemicals, PFNA, and/or PFBS.
- 5) Monitoring at consecutive connections to the distribution system is not required. The wholesale system is responsible for entry point monitoring.
- 6) Entry points with a blend of groundwater and surface water shall be monitored as a surface water source.