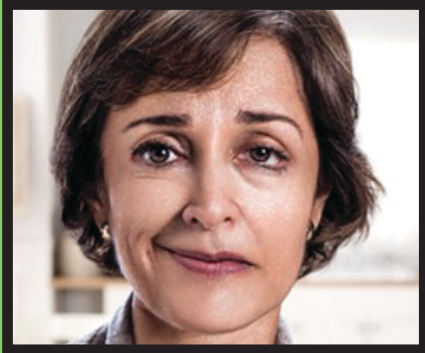


Be Stroke Smart

View 3-min video



Suddenly, developed a droopy smile
Called 911 IMMEDIATELY
Arrived at hospital in time for treatment



GOOD OUTCOME

Has full health • Back at work
Takes care of her family



Suddenly, developed a droopy smile
Did NOT Call 911 IMMEDIATELY
Delayed getting medical treatment



POOR OUTCOME

Permanent Disability • Unable to speak or walk
Unable to work • Needs family to take care of him

**MINUTES
MATTER:**
What will be
Your story?

BEFAST

▲
Balance
Loss

▲
Eyesight
Changes

▲
Face
Drooping

▲
Arm
Weakness

▲
Speech
Difficulty

▲
Time to
call 911

On Sudden Onset of **ANY** Sign, Call 911 Immediately.